

WALSER COLLISION ADDITION

C.R. DOC. NO. _____

KNOW ALL PERSONS BY THESE PRESENTS: That Walsler Real Estate III, LLC a Minnesota limited liability company, fee owner of the following described property situated in the County of Hennepin, State of Minnesota to wit:

Lot 1, Block 1, LYNN ACRES SECOND ADDITION.

AND

Lot 49, "LYNN ACRES", Hennepin County, Minnesota.

Has caused the same to be surveyed and platted as WALSER COLLISION ADDITION and does hereby dedicate to the public for public use the public way and the drainage and utility easements as created by this plat.

In witness whereof said Walsler Real Estate III, LLC, a Minnesota limited liability company, has caused these presents to be signed by its proper officer this 13 day of November, 2019.

WALSER REAL ESTATE III, LLC
By _____
Andrew Walsler, Chief Executive Officer

STATE OF MINN.
COUNTY OF HENNEPIN
This instrument was acknowledged before me on this 13 day of November, 2019, by Andrew Walsler, Chief Executive Officer of Walsler Real Estate III, LLC, a Minnesota limited liability company, on behalf of the company.

Becca Popow Endler
Notary Printed Name
Becca Popow Endler
Signature
Notary Public, Dakota County, Minnesota
My Commission Expires January 31, 2024

I Gary C. Huber do hereby certify that this plat was prepared by me or under my direct supervision; that I am a duly Licensed Land Surveyor in the State of Minnesota; that this plat is a correct representation of the boundary survey; that all mathematical data and labels are correctly designated on this plat; that all monuments depicted on this plat have been, or will be correctly set within one year; that all water boundaries and wet lands, as defined in Minnesota Statutes, Section 505.01, Subd. 3, as of the date of this certificate are shown and labeled on this plat; and all public ways are shown and labeled on this plat.

Dated this 7th day of November, 2019.
Gary C. Huber
Gary C. Huber, Licensed Land Surveyor
Minnesota License No. 22036

STATE OF MINNESOTA
COUNTY OF DAKOTA
This instrument was acknowledged before me on this 7th day of November, 2019, by Gary C. Huber.
Christine M. Larson
Notary Printed Name
Christine M. Larson
Signature
Notary Public, Dakota County, Minnesota
My Commission Expires January 31, 2024

BLOOMINGTON, MINNESOTA
This plat of WALSER COLLISION ADDITION was approved and accepted by the City Council of the City of Bloomington, Minnesota at a regular meeting thereof held this 7th day of October, 2019, and said plat is in compliance with the provisions of Minnesota Statutes, Section 505.03, Subdivision 2.

City Council of Bloomington, Minnesota
By: [Signature], Mayor
By: [Signature], City Manager

RESIDENT AND REAL ESTATE SERVICES, Hennepin County, Minnesota
I hereby certify that the taxes payable in 20__ and prior years have been paid for land described on this plat, dated this ___ day of _____, 20__.

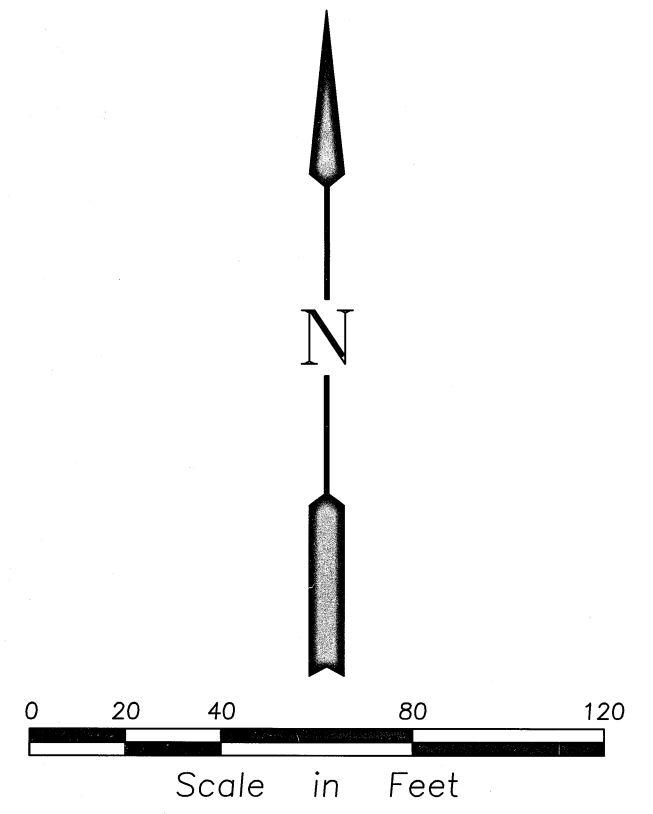
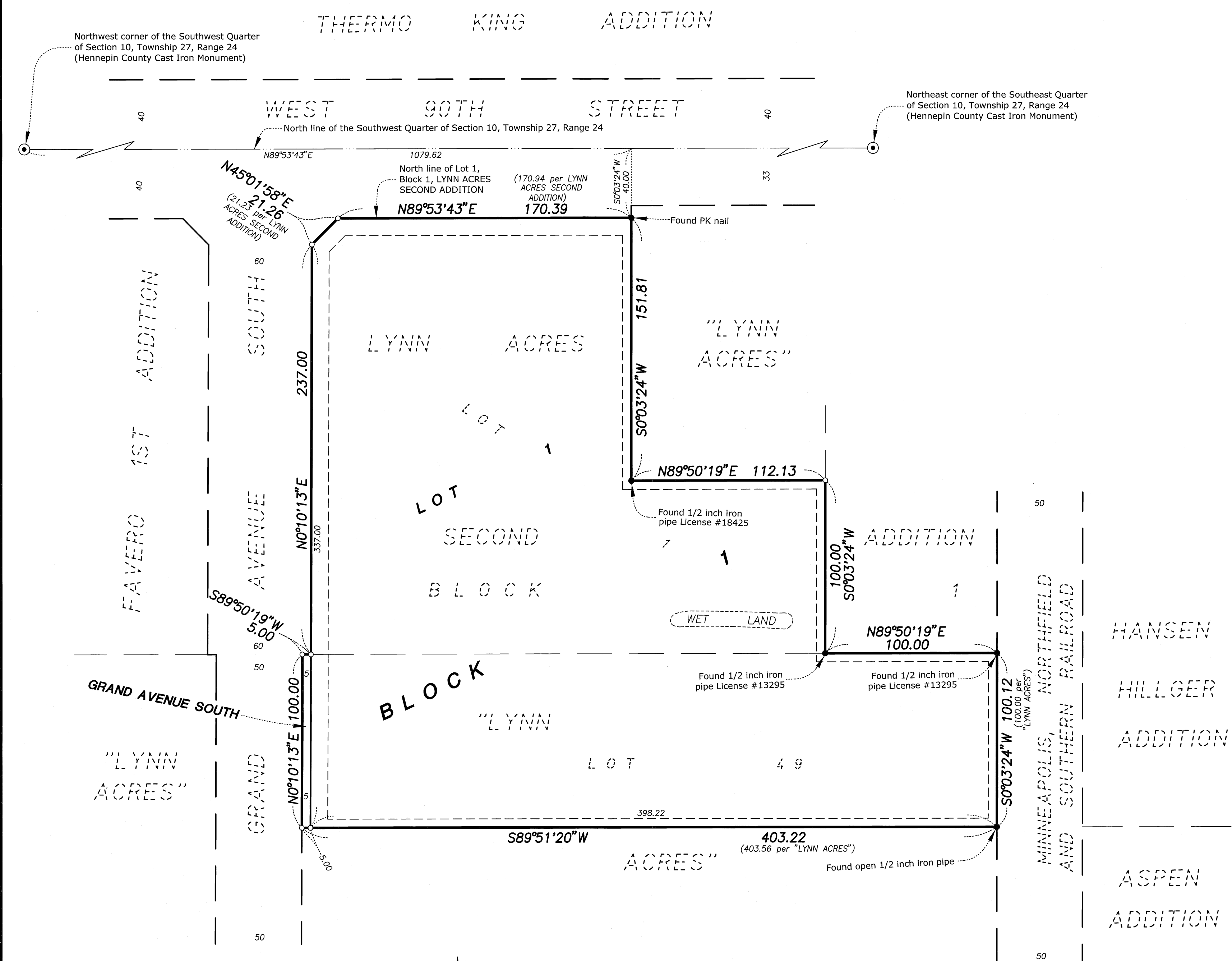
Mark V. Chapin, County Auditor
By: _____, Deputy

SURVEY DIVISION, Hennepin County, Minnesota
Pursuant to MN. STAT. Section 383B.565 (1969), this plat has been approved this ___ day of _____, 20__.

Chris F. Mavis, County Surveyor
By: _____

COUNTY RECORDER, Hennepin County, Minnesota
I hereby certify that the within plat of WALSER COLLISION ADDITION was recorded in this office this ___ day of _____, 20__, at ___ o'clock __.M.

Martin McCormick, County Recorder
By: _____, Deputy



Drainage and Utility Easements are shown thus:

Being 5 feet in width and adjoining lot lines and being 10 feet in width and adjoining right of way lines.

The north line of Lot 1, Block 1, LYNN ACRES SECOND ADDITION is assumed to have a bearing of N89°53'43"E.

- Denotes iron monument found. labeled as shown
- Denotes 1/2 inch by 14 inch monument set and marked by Minnesota License No. 22036