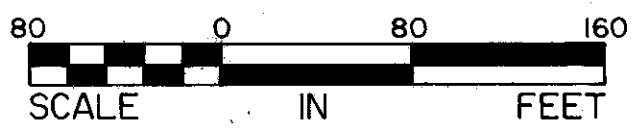
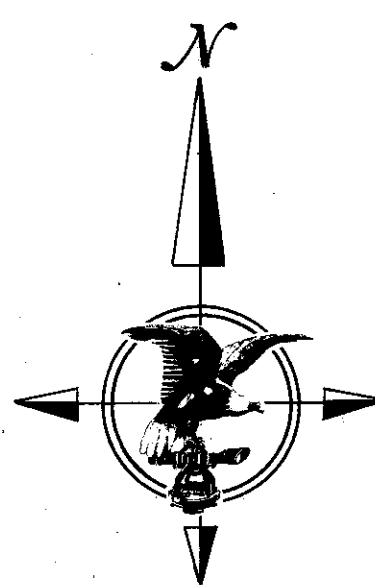


VICTORIA POND CENTER

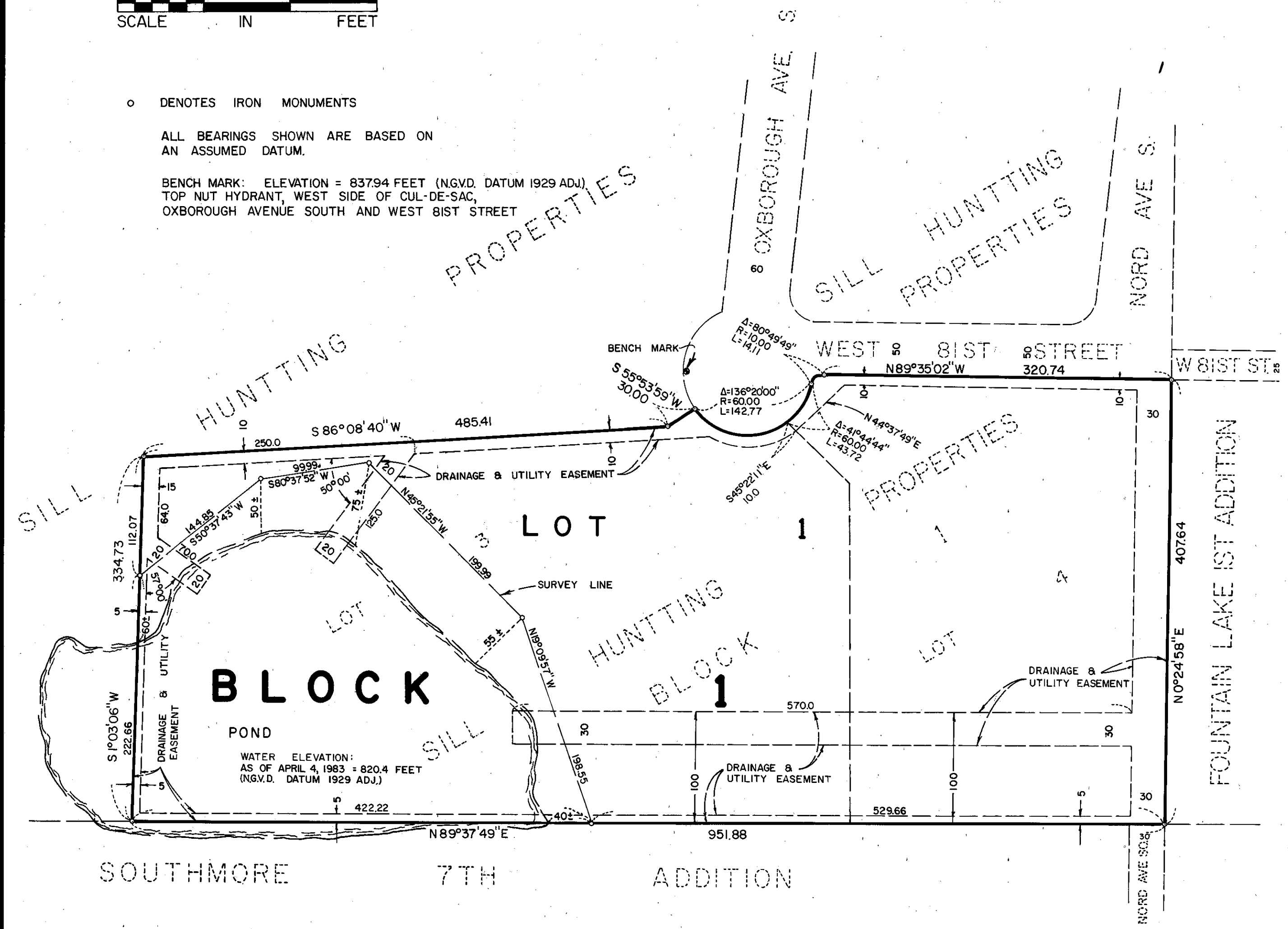
R.T. DOC. NO. _____



o DENOTES IRON MONUMENTS

ALL BEARINGS SHOWN ARE BASED ON AN ASSUMED DATUM.

BENCH MARK: ELEVATION = 837.94 FEET (NGVD, DATUM 1929 ADJ.)
TOP NUT HYDRANT, WEST SIDE OF CUL-DE-SAC,
OXBOROUGH AVENUE SOUTH AND WEST 81ST STREET



KNOW ALL MEN BY THESE PRESENTS: That Victoria Pond Investors, a partnership, owner and proprietor, of the following described property situate in the County of Hennepin, State of Minnesota to wit:

Lot 3 and Lot 4, Block 1, SILL HUNTING PROPERTIES, according to the plat thereof on file or of record in the office of the Registrar of Titles in and for said County.

Has caused the same to be surveyed and platted as VICTORIA POND CENTER and does hereby donate and dedicate to the public for public use forever the drainage and utility easements as shown on this plat.

In witness whereof said Victoria Pond Investors, a partnership, has caused these presents to be signed by its authorized partners this _____ day of _____, 1983:

VICTORIA POND INVESTORS:
By Samuel S. Marfield,
partner
By Kenneth C. Belgarde,
partner
By Harry J. Yaffe,
partner

State of Minnesota County of Hennepin The foregoing instrument was acknowledged before me this _____ day of _____, 1983 by Samuel S. Marfield, a partner, Kenneth C. Belgarde, a partner, and Harry J. Yaffe, a partner, of Victoria Pond Investors, a partnership, on behalf of the partnership.

Notary Public, Hennepin County, Minnesota
My Commission Expires _____

I hereby certify that I have surveyed and platted the property described on this plat as VICTORIA POND CENTER; that this plat is a correct representation of said survey; that all distances are correctly shown on the plat in feet and hundredths of a foot; that all monuments have been correctly placed in the ground as shown on the plat; that the outside boundary lines are correctly designated on said plat; and that there are no highways to be designated on said plat.

Harry S. Johnson
Land Surveyor
Minn. Lic. No. 5065

State of Minnesota County of Hennepin The foregoing instrument was acknowledged before me this 29th day of August, 1983 by Harry S. Johnson, Land Surveyor.

Paul Roger Pedersen
Notary Public, Hennepin County, Minnesota
My Commission Expires 1-22-85

BLOOMINGTON, MINNESOTA
The plat of VICTORIA POND CENTER was approved and accepted by the City Council of Bloomington, Minnesota at a regular meeting thereof held this _____ day of _____, 1983. If applicable, the written comments and recommendations of the Commissioner of Transportation and the County Highway Engineer have been received by the City or the prescribed 30 day period has elapsed without receipt of such comments and recommendations as provided by Minn. Statutes, Section 505.03 Subd. 2.

CITY COUNCIL OF BLOOMINGTON, MINNESOTA

By _____ Mayor By _____ Manager

PROPERTY TAXATION DEPARTMENT, Hennepin County, Minnesota
I hereby certify that there are no delinquent taxes for all years prior to _____ for land described on this plat. Dated this _____ day of _____, 1983
Vernon T. Hoppe, Director, by _____ Tax Clerk

SURVEY DIVISION, Hennepin County, Minnesota
Pursuant to Chapter 810 Minnesota Laws of 1969, this plat has been approved this _____ day of _____, 1983.
Robert L. Bakka, Hennepin County Surveyor, by _____

REGISTRAR OF TITLES, Hennepin County, Minnesota.
I hereby certify that the within plat of VICTORIA POND CENTER was filed in this office this _____ day of _____, 1983 at _____ o'clock _____ M.
R. Dan Carlson, Registrar of Titles, by _____ Deputy.

