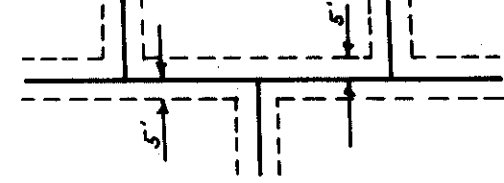


# VALLEY VIEW SECOND ADDITION

HENNEPIN COUNTY, MINNESOTA

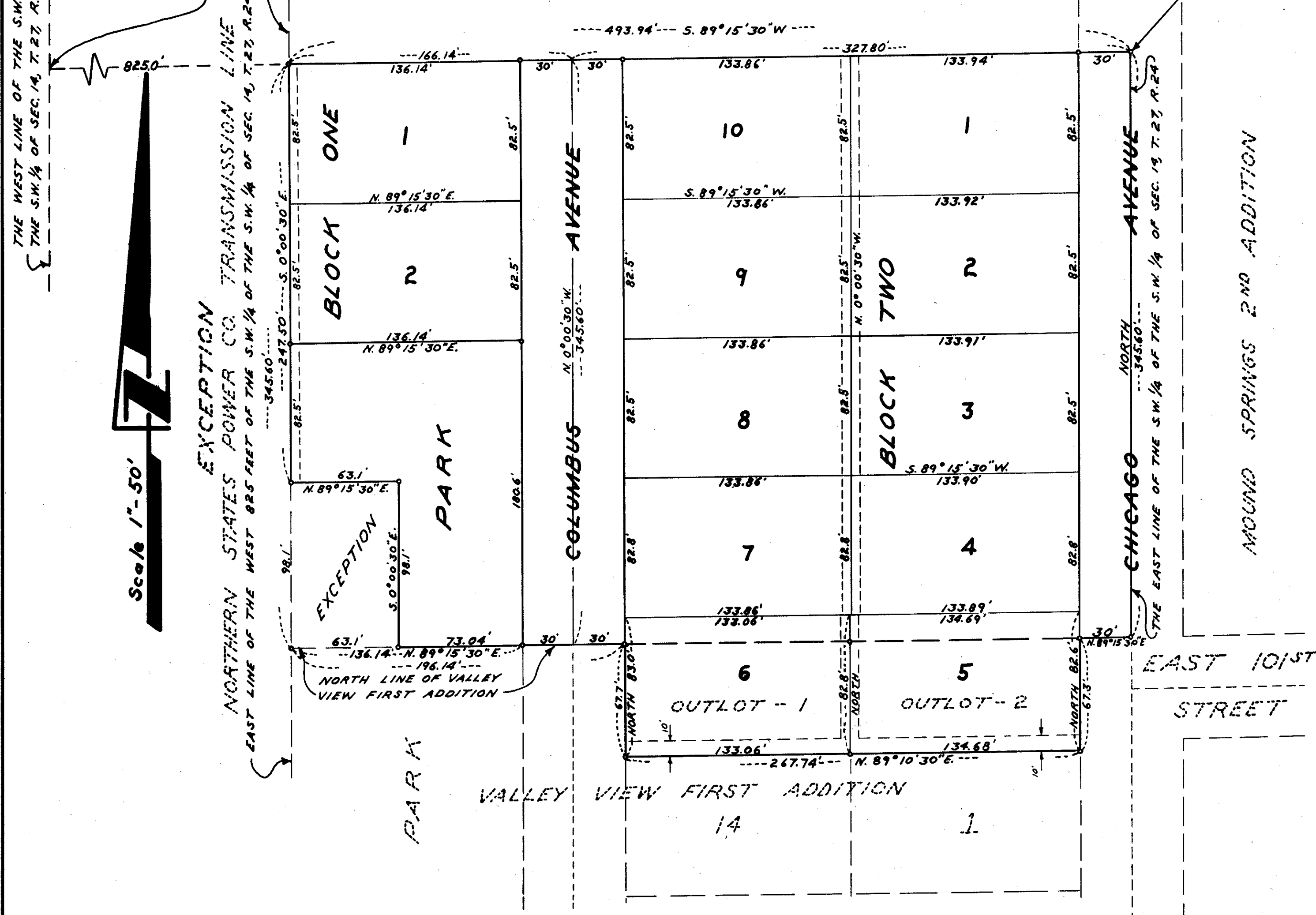
Know all men by these presents: That George R. Butler Construction Co., a Minnesota Corporation, as owner and proprietor of the following described property situated in the State of Minnesota and County of Hennepin to wit: Outlots 1 & 2 of Valley View First Addition according to the plat thereof on file and of record in the office of the Registrar of Titles and that part of the Southwest 1/4 of the Southwest 1/4 of Section 14, Township 27, Range 24, lying South of a line from a point on the East line thereof, 275.57 feet South of the Northeast Corner thereof to a point in the West line thereof which is 277.20 feet South of the Northwest Corner thereof, and North of Valley View First Addition; Except the West 825 feet thereof and Except the South 98.1 feet of the West 63.1 feet lying Easterly of the West 825 feet thereof. Has caused the same to be surveyed and platted as Valley View Second Addition and do hereby donate and dedicate to the public for the public use forever the park and avenues and also the easements for utility and drainage purposes as shown on the annexed plat. In witness whereof George R. Butler Construction Co. has caused these presents to be signed by its proper officers and its corporate seal to be hereunto affixed on this 27<sup>th</sup> day of Feb A.D. 1962

DASHED LINES DENOTE DRAINAGE & UTILITY EASEMENTS AND ARE FIVE FEET IN WIDTH ON EACH SIDE OF LOT LINES UNLESS OTHERWISE SHOWN.



A POINT 275.57 FEET SOUTH OF THE NORTHEAST CORNER OF THE S.W. 1/4 OF THE S.W. 1/4 OF SECT. 14, T. 27, R. 24

A POINT 277.20' SOUTH OF THE NORTHWEST CORNER OF S.W. 1/4 OF THE S.W. 1/4 OF SEC. 14, T. 27, R. 24  
"O" DENOTES IRON MONUMENT BEARINGS SHOWN ARE ASSUMED



In Presence Of

Signed

Rolf M. Wunder

George R. Butler Construction Co.  
George R. Butler its President  
Claude J. Probst its Secretary

State of Minnesota  
County of Hennepin On this 27<sup>th</sup> day of Feb A.D. 1962, before me, a Notary Public, within and for said County and State, personally appeared George R. Butler and Claude J. Probst, to me personally known, who being by me each duly sworn, did say that they are respectively the President and Secretary of George R. Butler Construction Co., the corporation named in the foregoing instrument, that the seal affixed to said instrument is the corporate seal of said corporation, that said instrument was signed and sealed in behalf of said corporation by authority of its board of directors, and said George R. Butler and Claude J. Probst acknowledge said instrument to be the free act and deed of said corporation.

Notary A. Brown  
Notary Public, Hennepin County, Minnesota  
My Commission Expires July 1, 1963

I hereby certify that I have surveyed and platted the property described and shown on this plat as VALLEY VIEW SECOND ADDITION, that this plat is a correct representation of said survey, that all distances are correctly shown on said plat in feet and decimals of a foot, that the monuments for the guidance of future surveys have been correctly placed in the ground as shown on said plat, that the outside boundary lines are correctly designated on said plat, and there are no wet lands or public highways to be designated on said plat other than as shown thereon.

Calvin H. Hedlund, Minnesota Registration No. 5942  
Surveyor

State of Minnesota  
County of Hennepin The above certificate was subscribed and sworn to before me, a Notary Public, within and for said County and State, on this \_\_\_\_\_ day of \_\_\_\_\_ A.D. 1962

Notary Public, Hennepin County, Minnesota  
My Commission Expires \_\_\_\_\_

The plat of VALLEY VIEW SECOND ADDITION was approved and accepted by the City Council of Bloomington, Minnesota, at a regular meeting thereof held on this \_\_\_\_\_ day of \_\_\_\_\_ A.D. 1962

City Council, Bloomington, Minnesota

by \_\_\_\_\_ its Mayor

by \_\_\_\_\_ its Manager

The boundaries of this plat and the boundaries of the blocks therein have been mathematically checked and approved. No determination has been made to ascertain that the legal description agrees with said plat.

Dated this \_\_\_\_\_ day of \_\_\_\_\_ A.D. 1962

by Howard W. Perkins, Hennepin County, Surveyor