

U-HAUL 2ND ADDITION

R.T. DOC. NO. _____

KNOW ALL PERSONS BY THESE PRESENTS: That Amerco Real Estate Company, a Nevada corporation, owner of the following described property situated in the County of Hennepin, State of Minnesota to wit:

Lot 2, Block 1, A T AND T ADDITION

AND

Lot 2, Block 1, A T AND T 2ND ADDITION

Has caused the same to be surveyed and platted as U-HAUL 2ND ADDITION and does hereby dedicate to the public for public use the easements as created by this plat for drainage and utility purposes only.

In witness whereof said Amerco Real Estate Company, a Nevada corporation, has caused these presents to be signed by its proper officer this 4 day of October, 2020.

AMERCO REAL ESTATE COMPANY

Signed: _____ as President

State of Arizona
County of Maricopa

This instrument was acknowledged before me on October 14th, 2020 by Matthew E. Boncag of Amerco Real Estate Company, a Nevada corporation, on behalf of the corporation.

(signature) _____
(print) Matthew E. Boncag
Notary Public 501199 Maricopa County, Arizona
My Commission expires 12/31/2023

SURVEYOR'S CERTIFICATE

I Mark A. Schwanz do hereby certify that this plat was prepared by me or under my direct supervision; that I am a duly Licensed Land Surveyor in the State of Minnesota; that this plat is a correct representation of the boundary survey; that all mathematical data and labels are correctly designated on this plat; that all monuments depicted on this plat have been or, will be correctly set within one year; that all water boundaries and wet lands, as defined in Minnesota Statutes, Section 505.01, Subd. 3, as of the date of this certificate are shown and labeled on this plat; and all public ways are shown and labeled on this plat.

Dated this 7th day of October, 2020

(signature) Mark A. Schwanz
Mark A. Schwanz, Licensed Land Surveyor
Minnesota License No. 45817

State of Minnesota
County of Rice

This instrument was acknowledged before me on October 7, 2020 by Mark A. Schwanz.

(signature) Stephanie A. Merdan
(print) Stephanie A. Merdan

Notary Public 20450450, County of Rice, State of Minnesota
My Commission expires January 31, 2024

CITY COUNCIL, CITY OF BLOOMINGTON, MINNESOTA

This plat of U-HAUL 2ND ADDITION, was approved and accepted by the City Council of the City of Bloomington, Minnesota at a regular meeting thereof held this 6th day of April, 2020, and said plat is in compliance with the provisions of Minnesota Statutes, Section 505.03, Subd. 2.

CITY COUNCIL, CITY OF BLOOMINGTON, MINNESOTA

By: Tina Baur Mayor
By: A. O. Olson City Manager

RESIDENT AND REAL ESTATE SERVICES, HENNEPIN COUNTY, MINNESOTA

I hereby certify that taxes payable in 20____ and prior years have been paid for land described on this plat, dated this ____ day of _____, 20____.

Mark V. Chapin, County Auditor By: _____ Deputy

SURVEY DIVISION, HENNEPIN COUNTY, MINNESOTA

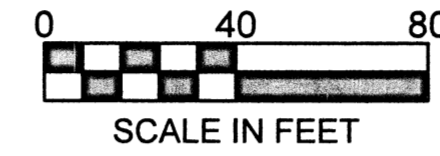
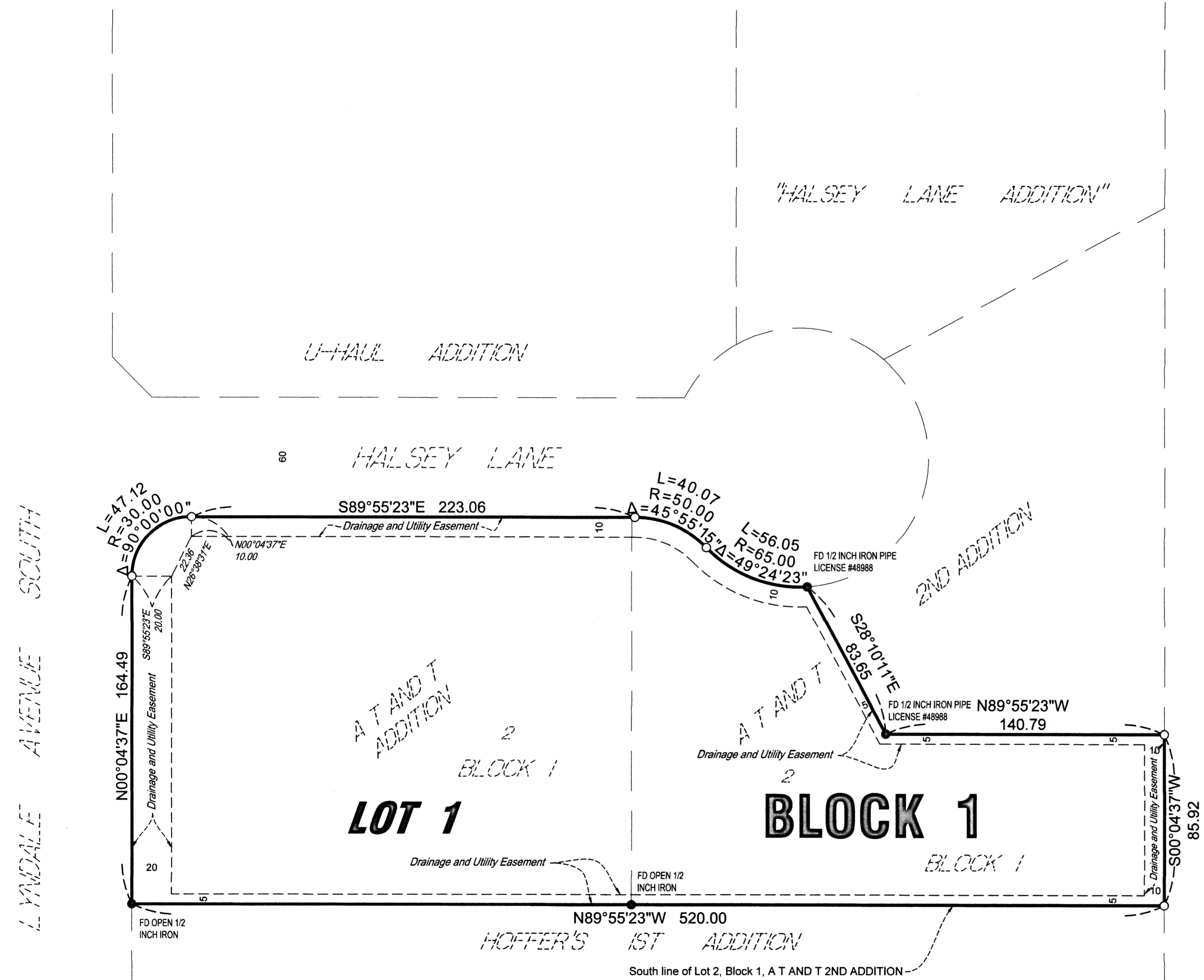
Pursuant to MN. STAT. Sec. 383B.565 (1969), this plat has been approved this ____ day of _____, 20____.

Chris F. Mavis, County Surveyor By: _____

REGISTRAR OF TITLES, HENNEPIN COUNTY, MINNESOTA

I hereby certify that the within plat of U-HAUL 2ND ADDITION was filed in this office this ____ day of _____, 20____, at ____ o'clock ____ M.

Martin McCormick, Registrar of Title By: _____ Deputy

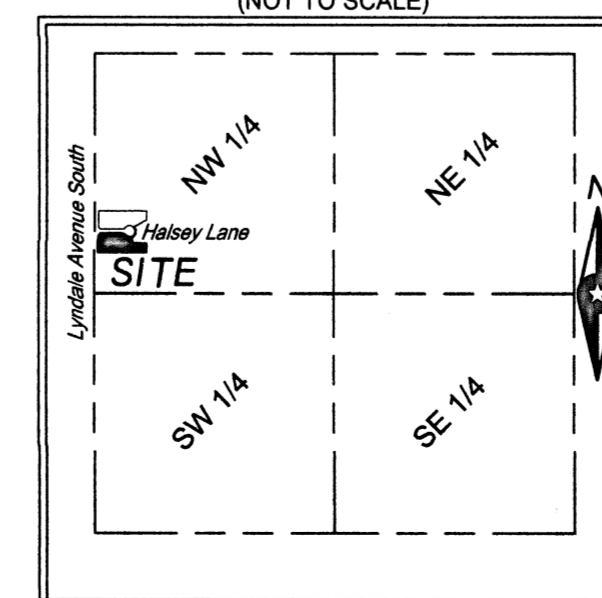


BEARING NOTE:
The orientation of this bearing system is based on the south line of Lot 2, Block 1, A T AND T 2ND ADDITION which is assumed to bear N89°55'23"W.

LEGEND

- DENOTES FOUND 1/2 IRON MONUMENT
- DENOTES 1/2 INCH DIA. x 18 INCH LONG IRON PIPE SET WITH PLASTIC CAP MARKED BY ISG, LICENSE NO. 45817

VICINITY MAP (NOT TO SCALE)



SEC. 10, TWP. 27, RGE. 24
Hennepin County, Minnesota

