

# REGISTERED LAND SURVEY RLS-199

NO. **199**

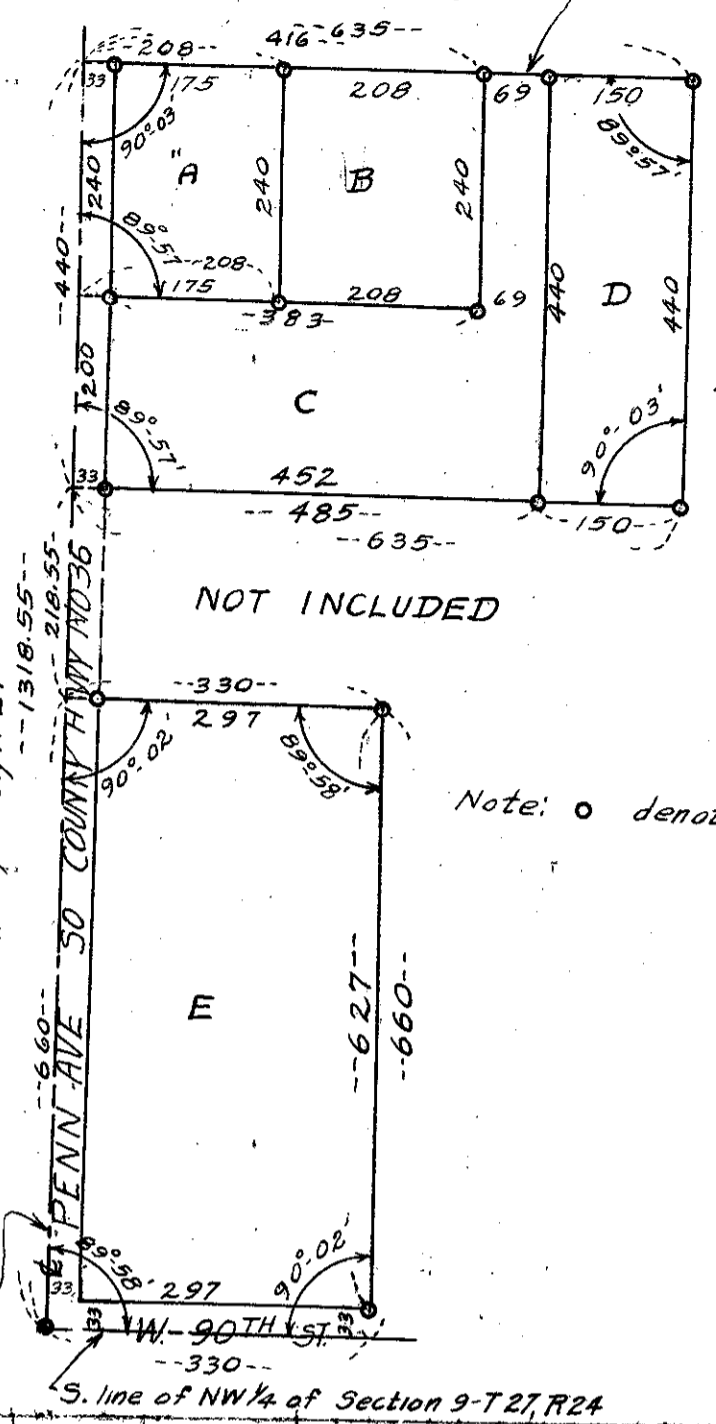
Bennie Dietz

North line of the SW 1/4 of the NW 1/4 of Section 9, T.27, R.24



SCALE  
1" = 200'

Note: o denotes iron monument



I hereby certify that in accordance with the provisions of chapter 508 Minnesota statutes of 1949 as amended, I have surveyed the following described tracts of land in the County of Hennepin and in the State of Minnesota to wit: That part of the Southwest 1/4 of the Northwest 1/4 of Section 9 Township 27 Range 24 described as follows:

"B" - Beginning at a point in the North line of said tract 208ft East of, measured along the North line from the Northwest corner of said tract; thence South parallel with the West line of said tract 240 feet; thence East parallel with the North line of said tract 208 feet; thence North parallel with the West line of said tract 240 feet to the North line of said tract; thence West along the North line of said tract to the point of beginning.

"C" - Beginning at a point in the North line of said tract 416 feet East of, measured along the North line from the Northwest corner of said tract; thence South parallel with the West line of said tract 240 feet; thence West parallel with the North line of said tract 416 feet to the West line of said tract; thence South along the West line 200 feet; thence East parallel with the North line of said tract 485 feet; thence North to a point in the North line of said tract 485 feet East of the Northwest corner thereof; thence West along said North line to point of beginning.

"D" - Beginning on the North line of said tract 485 feet East of the Northwest corner thereof; thence East along said North line a distance of 150 feet; thence South parallel with the West line of said tract a distance of 440 feet; thence West parallel with the North line of said tract a distance of 150 feet; thence North to beginning.

"E" - The West 330 feet of the South 660 feet of said tract.

"A" - Beginning at the NW corner of said Southwest 1/4 of Northwest 1/4; thence South along the West line thereof 240 feet; thence East parallel to the North line thereof 208 feet; thence North parallel to the West line thereof 240 feet; thence West 208 feet to the point of beginning according to the United States Government survey thereof.

That the survey shown hereon is a correct delineation of said survey.  
 Dated May 21, 1953  
 Clyde H Parker  
 Registered Land Surveyor No. 2055