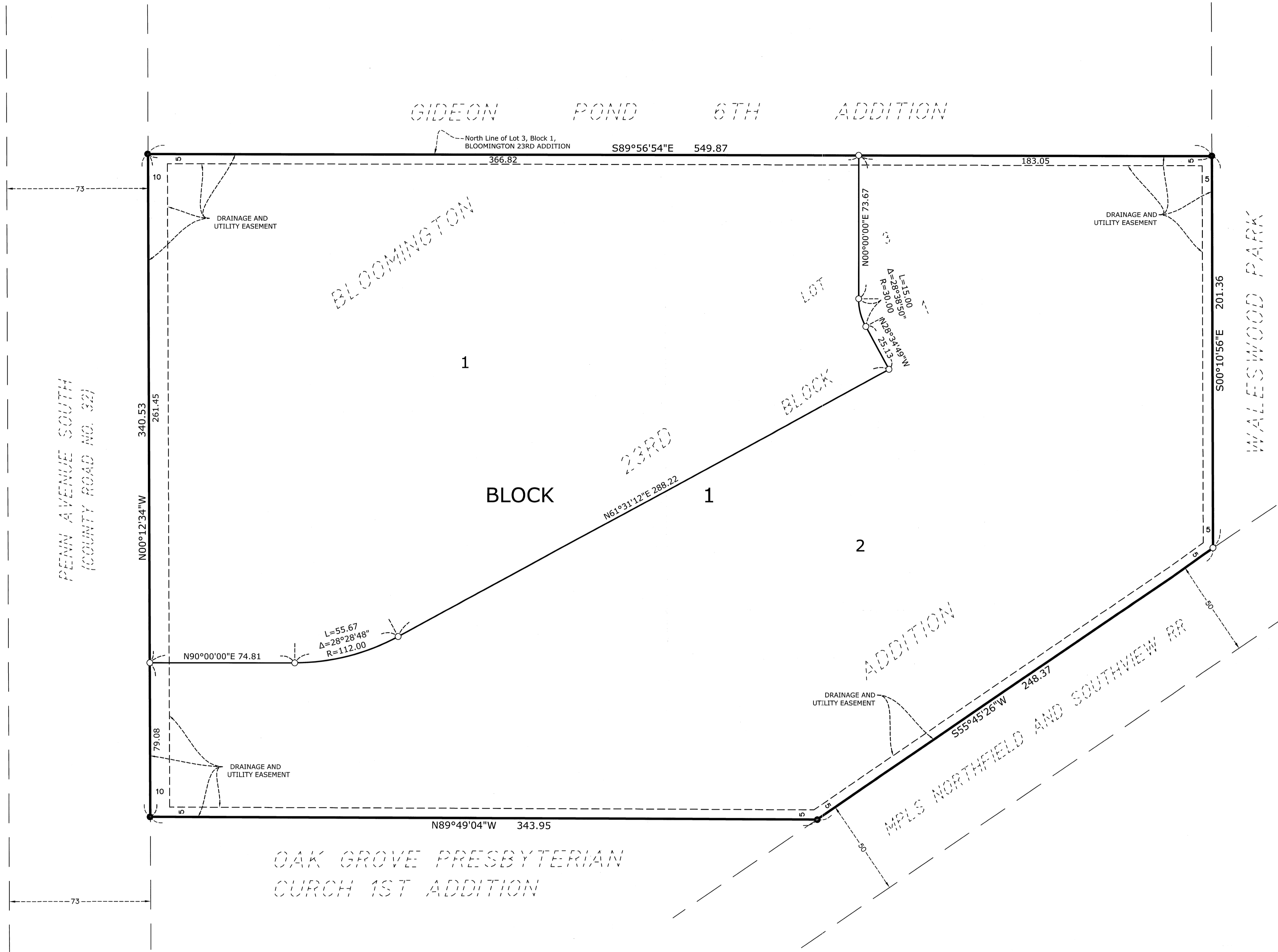


PENN PLACE ADDITION

C.R. DOC. NO _____



KNOW ALL PERSONS BY THESE PRESENTS: That KPS, LLC, a Minnesota limited liability company, fee owner of the following described property:
 Lot 3, Block 1, BLOOMINGTON 23RD ADDITION
 Has caused the same to be surveyed and platted as PENN PLACE ADDITION and does hereby dedicate to the public for public use forever the easements for drainage and utility purposes as shown on this plat.

In witness whereof said KPS, LLC, a Minnesota limited liability company, has caused these presents to be signed by its proper officer this 1st day of November, 2019.

KPS, LLC
 By: [Signature] Its: Chief Manager
 STATE OF Minnesota
 COUNTY OF Ramsey
 This instrument was acknowledged before me this 1st day of November, 2019, by Lori Boisclair the Chief Manager of KPS, LLC, a Minnesota limited liability company, on behalf of the company.
[Signature] Michael Rawlings My Commission Expires: Jan. 31, 2023
 Notary Public, Signature Notary Printed Name
 Notary Public Ramsey County, Minnesota

SURVEYORS CERTIFICATE
 I Rory L. Synsteliem do hereby certify that this plat was prepared by me or under my direct supervision; that I am a duly Licensed Land Surveyor in the State of Minnesota; that this plat is a correct representation of the boundary survey; that all mathematical data and labels are correctly designated on this plat; that all monuments depicted on this plat have been or will be set within one year; that all water boundaries and wet lands, as defined in Minnesota Statutes, Section 505.01, Subd. 3, as of the date of this certificate are shown and labeled on this plat; and all public ways are shown and labeled on this plat.
 Dated this 1st day of November, 2019.

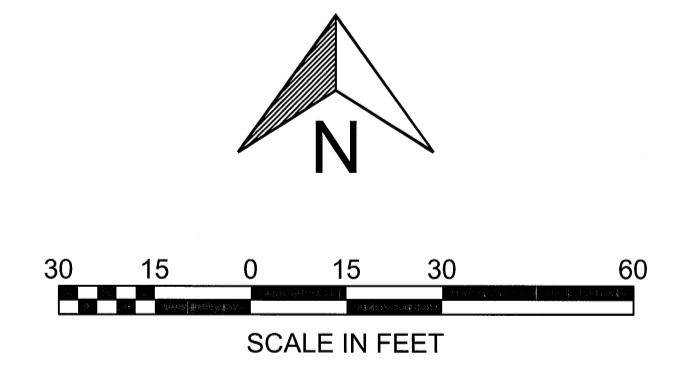
[Signature]
 Rory L. Synsteliem, Licensed Land Surveyor
 Minnesota License No. 44565
 STATE OF Minnesota
 COUNTY OF Ramsey
 This instrument was acknowledged before me this 21st day of October, 2019, by Rory L. Synsteliem
[Signature] Michael Rawlings My Commission Expires: Jan. 31, 2023
 Notary Public, Signature Notary Printed Name
 Notary Public Ramsey County, Minnesota

BLOOMINGTON, MINNESOTA
 This plat of PENN PLACE ADDITION was approved and accepted by the City Council of the City of Bloomington, Minnesota at a regular meeting held this 24th day of September, 2019, and said plat is compliance with the provisions of Minnesota Statutes, Section 505.03, Subd. 2.
 CITY COUNCIL, CITY OF BLOOMINGTON, MINNESOTA
 By: [Signature] Mayor By: [Signature] City Manager

RESIDENT AND REAL ESTATE SERVICES, Hennepin County, Minnesota
 I hereby certify that taxes payable in 2019 and prior years have been paid for land described on this plat dated this ___ day of ___, 2019.
 Mark V. Chapin, Hennepin County Auditor
 By: _____ Deputy

SURVEY DIVISION, Hennepin County, Minnesota
 Pursuant to Minnesota Statutes Section 383B.565 (1969), this plat has been approved this ___ day of ___, 2019.
 Chris F. Mavis, Hennepin County Surveyor
 By: _____

COUNTY RECORDER, Hennepin County, Minnesota
 I hereby certify that the within plat of PENN PLACE ADDITION was recorded in this office this ___ day of ___, 2019, at ___ O'Clock ___ M.
 Martin McCormick, County Recorder
 By: _____ Deputy



Bearings are based on the North line of Lot 3, Block 1, BLOOMINGTON 23RD ADDITION having an assumed bearing of S89°56'54"E.

- 1/2 Inch by 14 Iron Monument Set Marked "RLS 44565"
- Found 1/2 Inch Open Iron Monument