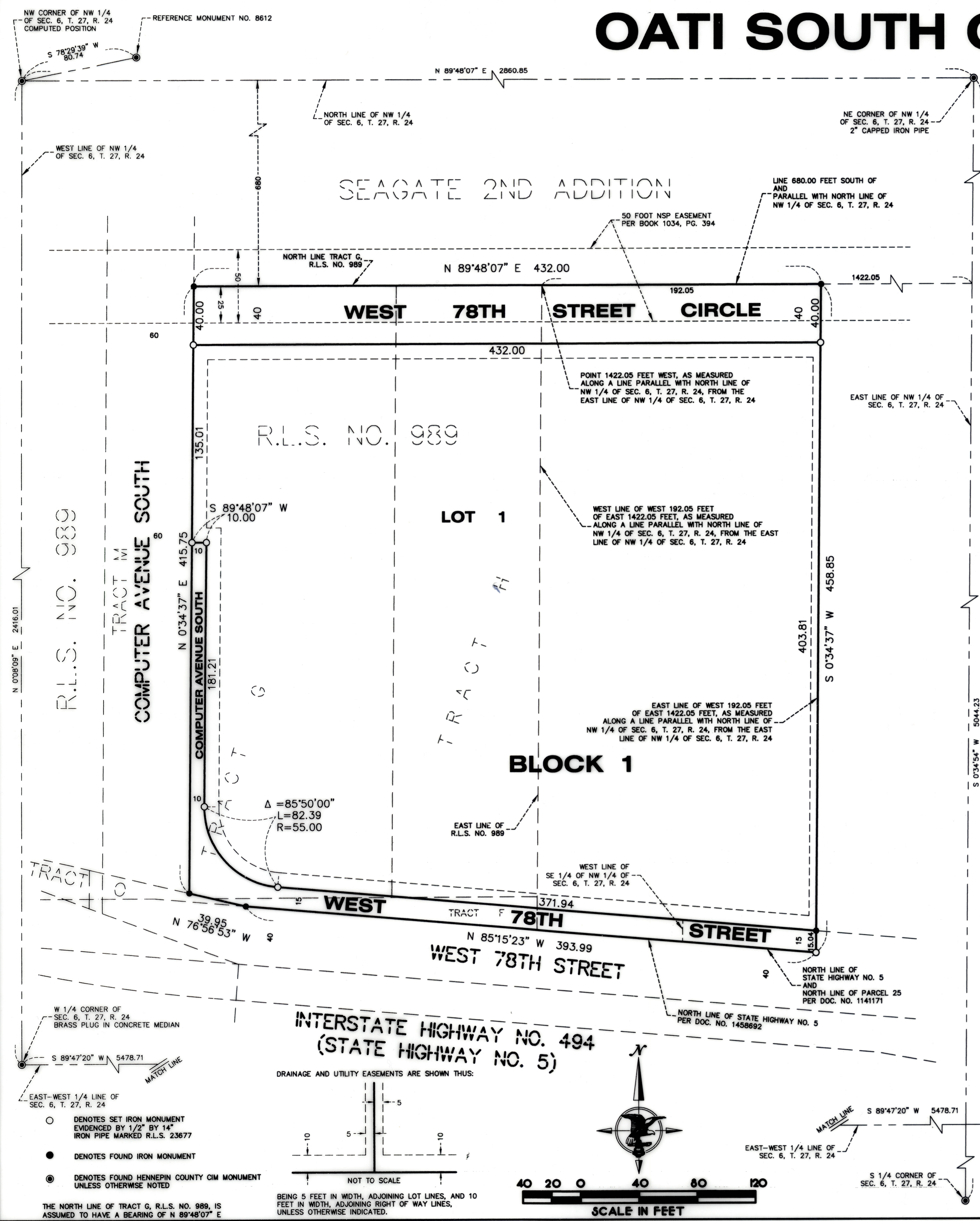


OATI SOUTH CAMPUS



KNOW ALL PERSONS BY THESE PRESENTS: That Computer Avenue, LLC, a Minnesota limited liability company fee owner of the following described property situated in the County of Hennepin, State of Minnesota, to-wit:

Tracts F, G and H, Registered Land Survey No. 989, Hennepin County, Minnesota.

The West 192.05 feet of the East 1422.05 feet as measured along a line parallel with the North line thereof of that part of the Northwest Quarter of Section 6, Township 27, Range 24 lying South of the North 680 feet thereof and lying North of State Highway No. 5 as now laid out and traveled.

Has caused the same to be surveyed and platted as OATI SOUTH CAMPUS and does hereby dedicate to the public, for public use the public ways and the easements as shown on this plat for drainage and utility purposes only.

In witness whereof, said Computer Avenue, LLC, has caused these presents to be signed by its proper officer this 5th day of NOVEMBER, 2014

Computer Avenue, LLC
By Mary Brown its GENERAL MANAGER

STATE OF MINNESOTA
COUNTY OF HENNEPIN

The foregoing instrument was acknowledged before me this 5th day of NOVEMBER, 2014, by MARY BROWN its GENERAL MANAGER of Computer Avenue, LLC, a Minnesota limited liability company, on behalf of said limited liability company.

Jill Ann Sanders My Commission Expires: 01-31-2016 Jill Ann Sanders
Notary Public, Hennepin County, Minnesota Printed Name

I, Thomas E. Hodorff do hereby certify that this plat was prepared by me or under my direct supervision; that I am a duly Licensed Land Surveyor in the State of Minnesota; that this plat is a correct representation of the boundary survey; that all mathematical data and labels are correctly designated on the plat; that all monuments depicted on this plat have been, or will be correctly set within one year; that all water boundaries and wet lands, as defined in Minnesota Statutes, Section 505.01, Subd. 3, as of the date of this certificate are shown and labeled on this plat; and all public ways are shown and labeled on this plat.

Dated this 28th day of October, 2014.

Thomas E. Hodorff
Thomas E. Hodorff, Licensed Land Surveyor,
Minnesota License No. 23677

STATE OF MINNESOTA
COUNTY OF HENNEPIN

This instrument was acknowledged before me on this 28th day of October, 2014, By Thomas E. Hodorff.

Allison Ludvigson My Commission Expires: Jan 31 2016 Allison Ludvigson
Notary Public, Hennepin County, Minnesota Printed Name

BLOOMINGTON, MINNESOTA

This plat of OATI SOUTH CAMPUS was approved and accepted by the City Council of the City of Bloomington, Minnesota at a regular meeting thereof held this ___ day of ___ 20___. If applicable, the written comments and recommendations of the Commissioner of Transportation and the County Highway Engineer have been received by the City or the prescribed 30 day period has elapsed without receipt of such comments and recommendations, as provided by Minnesota Statutes, Section 505.03, Subd. 2.

CITY COUNCIL, City of Bloomington, Minnesota

By: _____ Mayor By: _____ City Manager

RESIDENT AND REAL ESTATE SERVICES, Hennepin County, Minnesota

I hereby certify that taxes payable in 20__ and prior years have been paid for land described on this plat, dated this ___ day of ___, 20__.

By: Mark V. Chapin, County Auditor By: _____ Deputy

SURVEY DIVISION, Hennepin County, Minnesota

Pursuant to MN. STAT. Sec. 383B.5E5 (1969), this plat has been approved this ___ day of ___, 20__.

Chris F. Mavis, Hennepin County Surveyor By: _____

REGISTRAR OF TITLES, Hennepin County, Minnesota

I hereby certify that the within plat of OATI SOUTH CAMPUS was filed in this office this ___ day of ___, 20__ at ___ o'clock __.

Martin McCormick, Registrar of Titles By: _____ Deputy