

NESBITT INDUSTRIAL PARK 3RD ADDITION

KNOW ALL PERSONS BY THESE PRESENTS: That TCG Nesbitt Holdings LLC, a Delaware limited liability company, fee owner, of the following described property situated in the County of Hennepin, State of Minnesota, to wit:

Lot 2, Block 1, NESBITT INDUSTRIAL PARK 2ND ADDITION

Has caused the same to be surveyed and platted as NESBITT INDUSTRIAL PARK 3RD ADDITION and does hereby dedicate to the public for public use the drainage and utility easements as created by this plat.

In witness whereof said TCG Nesbitt Holdings LLC, a Delaware limited liability company, has caused these presents to be signed by its proper officer this 12th day of June, 2018.

SIGNED: TCG Nesbitt Holdings LLC

By: [Signature] as Manager

NEW YORK
STATE OF MINNESOTA
COUNTY OF NEW YORK

The foregoing instrument was acknowledged before me this 12th day of June, 2018 by Morris Davel, as Manager of TCG Nesbitt Holdings LLC, a Delaware limited liability company, on behalf of said company.

[Signature] Notary Public, New York County, Minnesota
Chana Klein Notary Printed Name
My Commission Expires January 7, 2021

I, Theodore S. Brown, do hereby certify that this plat was prepared by me or under my direct supervision; that I am a duly Licensed Land Surveyor in the State of Minnesota; that this plat is a correct representation of the boundary survey; that all mathematical data and labels are correctly designated on this plat; that all monuments depicted on this plat have been, or will be correctly set within one year; that all water boundaries and wet lands, as defined in Minnesota Statutes, Section 505.01, Subd. 3, as of the date of this certificate are shown and labeled on this plat; and all public ways are shown and labeled on this plat.

Dated this 7th day of June, 2018.

[Signature]
Theodore S. Brown, Licensed Land Surveyor
Minnesota License No. 51678

STATE OF MINNESOTA
COUNTY OF Hennepin

The foregoing instrument was acknowledged before me this 7th day of June, 2018, by Theodore S. Brown.

[Signature] Notary Public, Hennepin County, Minnesota
Julie Sabacky Notary Printed Name
My Commission Expires January 31, 2019

BLOOMINGTON, MINNESOTA

This plat of NESBITT INDUSTRIAL PARK 3RD ADDITION was approved and accepted by the City Council of Bloomington, Minnesota, at a regular meeting thereof held this 1st day of FEBRUARY, 2016. If applicable, the written comments and recommendations of the Commissioner of Transportation and the County Highway Engineer have been received by the City or the prescribed 30-day period has elapsed without receipt of such comments and recommendations, as provided by Minnesota Statutes, Section 505.03, Subdivision 2.

City Council of Bloomington, Minnesota
By: [Signature] Mayor

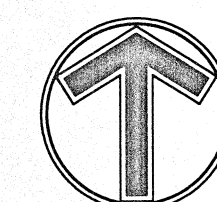
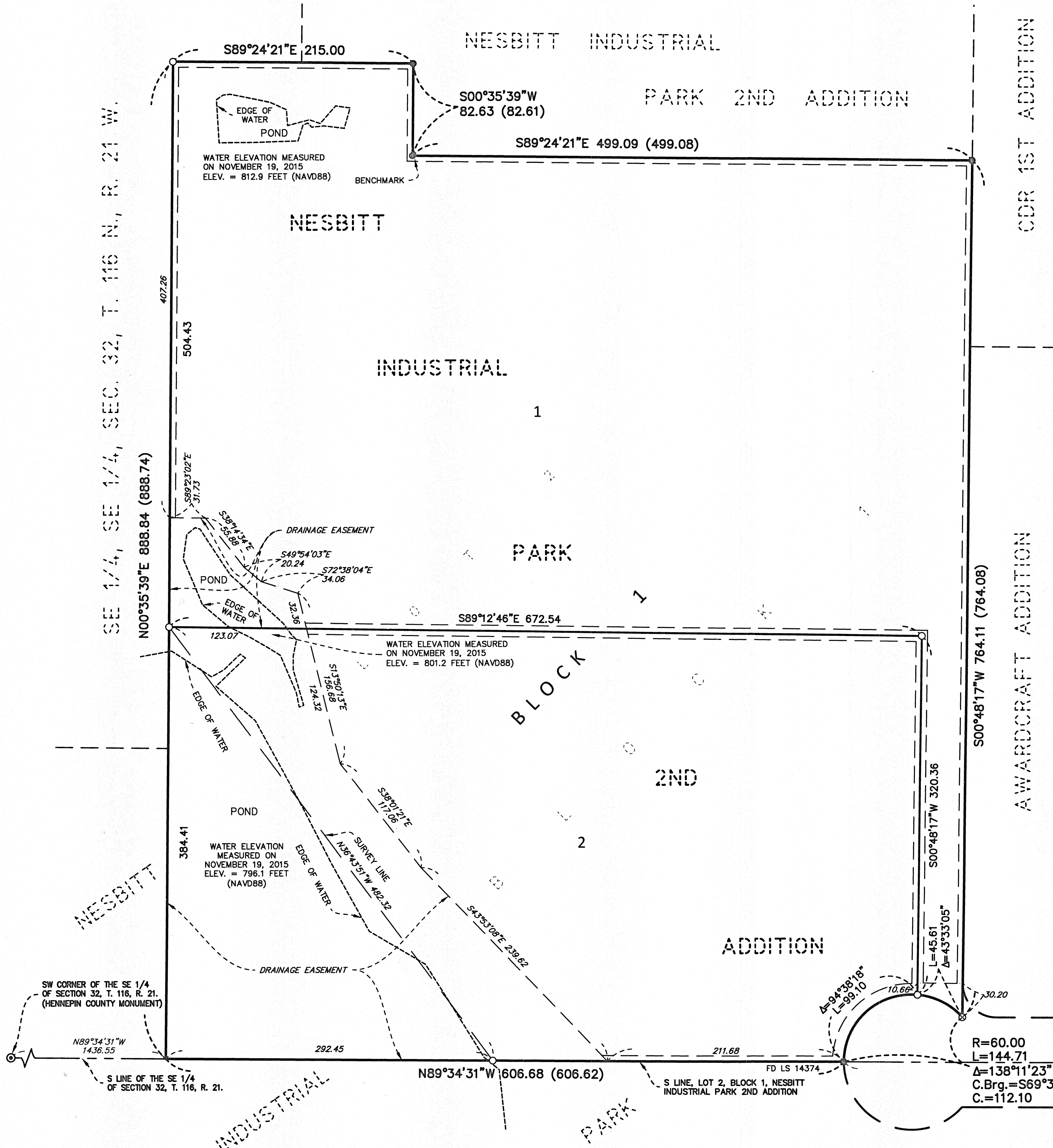
By: [Signature] City Manager

RESIDENT AND REAL ESTATE SERVICES, Hennepin County, Minnesota

I hereby certify that taxes payable in 20____ and prior years have been paid for land described on this plat, dated this ____ day of _____, 20____.

Mark V. Chapin, County Auditor

By: _____, Deputy



NORTH
0 60 120
SCALE IN FEET

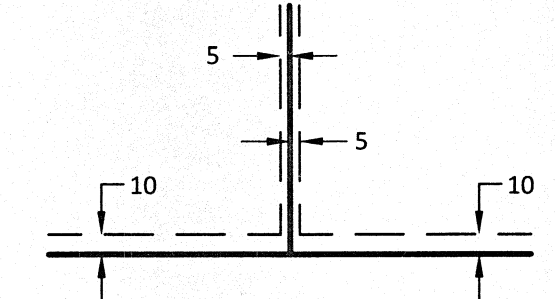
- DENOTES 1/2 INCH BY 14 INCH IRON MONUMENT SET AND MARKED BY LICENSE NO. 51678
- ⊗ DENOTES CHISELED "X" SET
- DENOTES 1/2 INCH OPEN IRON MONUMENT FOUND, UNLESS OTHERWISE NOTED.
- ⊙ DENOTES SECTION CORNER FOUND

(XX.XX) PLAT DIMENSION PER PLAT OF NESBITT INDUSTRIAL PARK 2ND ADDITION

THE SOUTH LINE OF LOT 2, BLOCK 1, NESBITT INDUSTRIAL PARK 2ND ADDITION IS ASSUMED TO HAVE A BEARING OF NORTH 89 DEGREES 34 MINUTES 31 SECONDS WEST.

BENCHMARK: TOP OF 1/2 INCH IRON PIPE AT THE MOST SOUTHERLY SOUTHWEST CORNER OF LOT 1, BLOCK 1 NESBITT INDUSTRIAL PARK 2ND ADDITION AS SHOWN. ELEVATION = 823.92 FEET (NAVD88)

DRAINAGE AND UTILITY EASEMENTS ARE SHOWN THUS: (NOT TO SCALE)



BEING 5 FEET IN WIDTH, UNLESS OTHERWISE INDICATED, AND ADJOINING LOT LINES, AND 10 FEET IN WIDTH, UNLESS OTHERWISE INDICATED, AND ADJOINING RIGHT-OF-WAY LINES, AS SHOWN ON THE PLAT.

SURVEY DIVISION, Hennepin County, Minnesota

Pursuant to Minnesota Statutes Section 383B.565 (1969), this plat has been approved this ____ day of _____, 20____.

Chris F. Mavis, County Surveyor

By: _____

REGISTRAR OF TITLES, Hennepin County, Minnesota

I hereby certify that the within plat of NESBITT INDUSTRIAL PARK 3RD ADDITION was filed in this office this ____ day of _____, 20____, at ____ o'clock ____ M.

Martin McCormick, Registrar of Titles

By: _____, Deputy