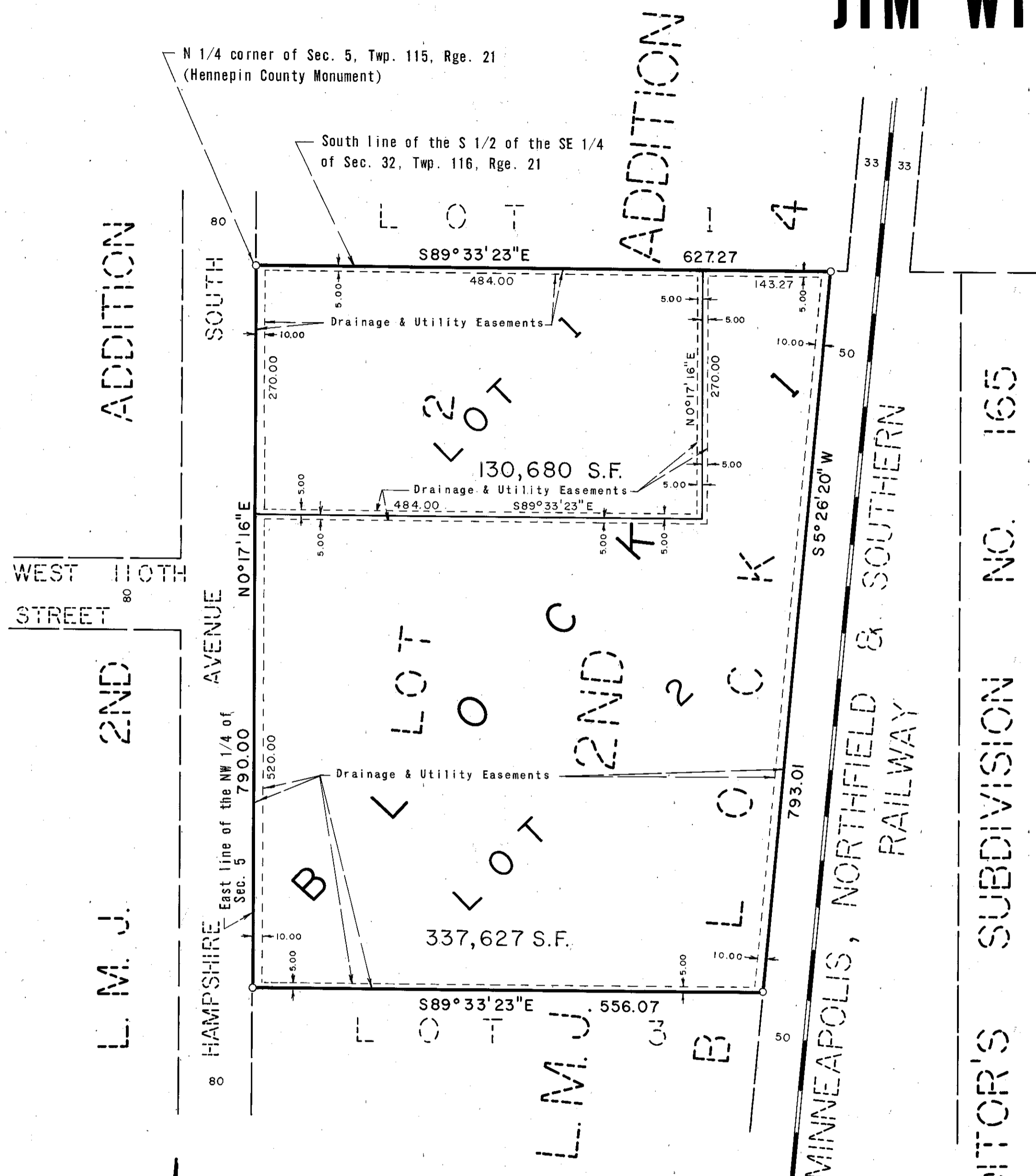


JIM WIENSCH 1ST ADDITION



AUDITOR'S SUBDIVISION NO. 165

KNOW ALL MEN BY THESE PRESENTS: That Partnership Investments of Minnesota, Inc., a Minnesota corporation, owner and proprietor of the following described property situate in the County of Hennepin, State of Minnesota, to wit:

Lot 2, Block 4, in L.M.J. 2nd Addition, according to the plat thereof on file or of record in the office of the Registrar of Titles in and for said County.

Has caused the same to be surveyed and platted as JIM WIENSCH 1ST ADDITION and does hereby donate and dedicate to the public, for public use forever, the drainage and utility easements as shown on the plat.

In witness whereof Partnership Investments of Minnesota, Inc., a Minnesota corporation, has caused these presents to be signed by its proper officers and its corporate seal to be hereunto affixed this 26th day of FEBRUARY A.D., 1973.

IN PRESENCE OF: SIGNED Partnership Investments of Minnesota, Inc.

Witness Carl O. Smith Witness Kathleen Greig Robert Larsen its PRESIDENT

Witness James Estlund Witness Genis M. Bluhm Michael J. O'Rourke its Secretary

State of Minnesota On this 26th day of FEBRUARY A.D., 1973, before me, a Notary Public, within and for said County of DAKOTA County and State, personally appeared ROBERT M. LARSEN and MICHAEL J. O'ROURKE, to me personally known, who being by me each duly sworn did say that they are the PRESIDENT and SECRETARY, respectively, of Partnership Investments of Minnesota, Inc., the corporation named in the foregoing instrument; that the seal affixed to said instrument is the corporate seal of said corporation; that said instrument was signed and sealed in behalf of said corporation by authority of its Board of Directors and said ROBERT M. LARSEN and MICHAEL J. O'ROURKE acknowledge said instrument to be the free act and deed of said corporation.

Mary J. Halverson
 Notary Public, DAKOTA County, Minnesota
 My Commission Expires _____

I hereby certify that I have surveyed and platted the property described on this plat as JIM WIENSCH 1ST ADDITION; that this plat is a correct representation of said survey; that all distances are correctly shown on said plat in feet and decimals of a foot; that all monuments have been correctly placed in the ground as shown on said plat; that the outside boundary lines are correctly designated on said plat; and there are no wet lands or highways to be designated on said plat.

Arvid T. Bodin
 Arvid T. Bodin
 Land Surveyor
 Minn. Reg. No. 9396

State of Minnesota The Surveyor's certificate was subscribed and sworn to before me, a Notary Public, within and County of Hennepin for said County and State, on this 23rd day of February A.D., 1973.

Wesley B. Baillif
 Notary Public, Hennepin County, Minnesota
 My Commission Expires April 11, 1978

The plat of JIM WIENSCH 1ST ADDITION was approved and accepted by the City Council of Bloomington, Minnesota at a regular meeting thereof held this _____ day of _____ A.D., 1973.

CITY COUNCIL OF BLOOMINGTON, MINNESOTA

By: _____ Mayor By: _____ Manager

Pursuant to Chapter 810, Minnesota Laws of 1969, this plat has been approved this _____ day of _____ A.D., 1973.

By: Elmer J. Peterson
 Hennepin County Surveyor

○ DENOTES IRON MONUMENT
BEARINGS SHOWN ARE ASSUMED.

