

FRIENDSHIP VILLAGE 2ND ADDITION

R.T. DOC. NO. _____

KNOW ALL PERSONS BY THESE PRESENTS: That Lifespace Communities, Inc., an Iowa not-for-profit organization, fee owner of the following described property situated in the County of Hennepin, State of Minnesota, to wit:

Lot 1, Block 1, FRIENDSHIP VILLAGE, EXCEPTING THEREFROM Parcel 207, MINNESOTA DEPARTMENT OF TRANSPORTATION RIGHT OF WAY PLAT NO. 27-195 and 27-199

AND

Lot 1, Block 1, HIGHWOOD PROPERTIES ADDITION

Has caused the same to be surveyed and platted as FRIENDSHIP VILLAGE 2ND ADDITION and does hereby dedicate to the public for public use forever the public way and the easements as shown on this plat for both drainage and utility purposes.

In witness whereof said Lifespace Communities, Inc., has caused these presents to be signed by its proper officer this 24th day of May, 2019.

LIFESPACE COMMUNITIES, INC.

By Lamy M. Smith
its CEO

STATE OF Iowa
COUNTY OF Polk

The foregoing instrument was acknowledged before me this 24th day of May, 2019, by Lamy M. Smith its CEO of Lifespace Communities, Inc., an Iowa not-for-profit organization, on behalf of the organization.

James M. Van Horn Jane M. Van Horn
(Signature) (Name Printed)

Notary Public, Polk County, Iowa

My Commission Expires 5-17-2020

I, Craig W. Morse, do hereby certify that this plat was prepared by me or under my direct supervision; that I am a duly Licensed Land Surveyor in the State of Minnesota; that this plat is a correct representation of the boundary survey; that all mathematical data and labels are correctly designated on this plat; that all monuments depicted on this plat have been, or will be correctly set within one year; that all water boundaries and wet lands, as defined in Minnesota Statutes, Section 505.01, Subd. 3, as of the date of this certificate are shown and labeled on this plat; and all public ways are shown and labeled on this plat.

Dated this 20th day of May, 2019.

Craig W. Morse
Craig W. Morse, Land Surveyor
Minnesota License No. 23021

STATE OF MINNESOTA
COUNTY OF HENNEPIN

This instrument was acknowledged before me on this 20th day of May, 2019, by Craig W. Morse.

Shannon Sinnen
(Signature) (Name Printed)

Notary Public, Carver County, Minnesota

My Commission Expires January 31, 2023

CITY COUNCIL, CITY OF BLOOMINGTON, MINNESOTA

This plat of FRIENDSHIP VILLAGE 2ND ADDITION was approved and accepted by the City Council of the City of Bloomington, Minnesota, at a regular meeting thereof held this 5th day of February, 2018, and said plat is in compliance with the provisions of Minnesota Statutes, Section 505.03, Subdivision 2.

By Paul Pianted Mayor
By [Signature] City Manager
CITY COUNCIL, CITY OF BLOOMINGTON, MINNESOTA

RESIDENT AND REAL ESTATE SERVICES, Hennepin County, Minnesota

I hereby certify that taxes payable in 20 and prior years have been paid for land described on this plat, dated this day of , 20 .

Mark V. Chapin, County Auditor By Deputy

SURVEY DIVISION, Hennepin County, Minnesota

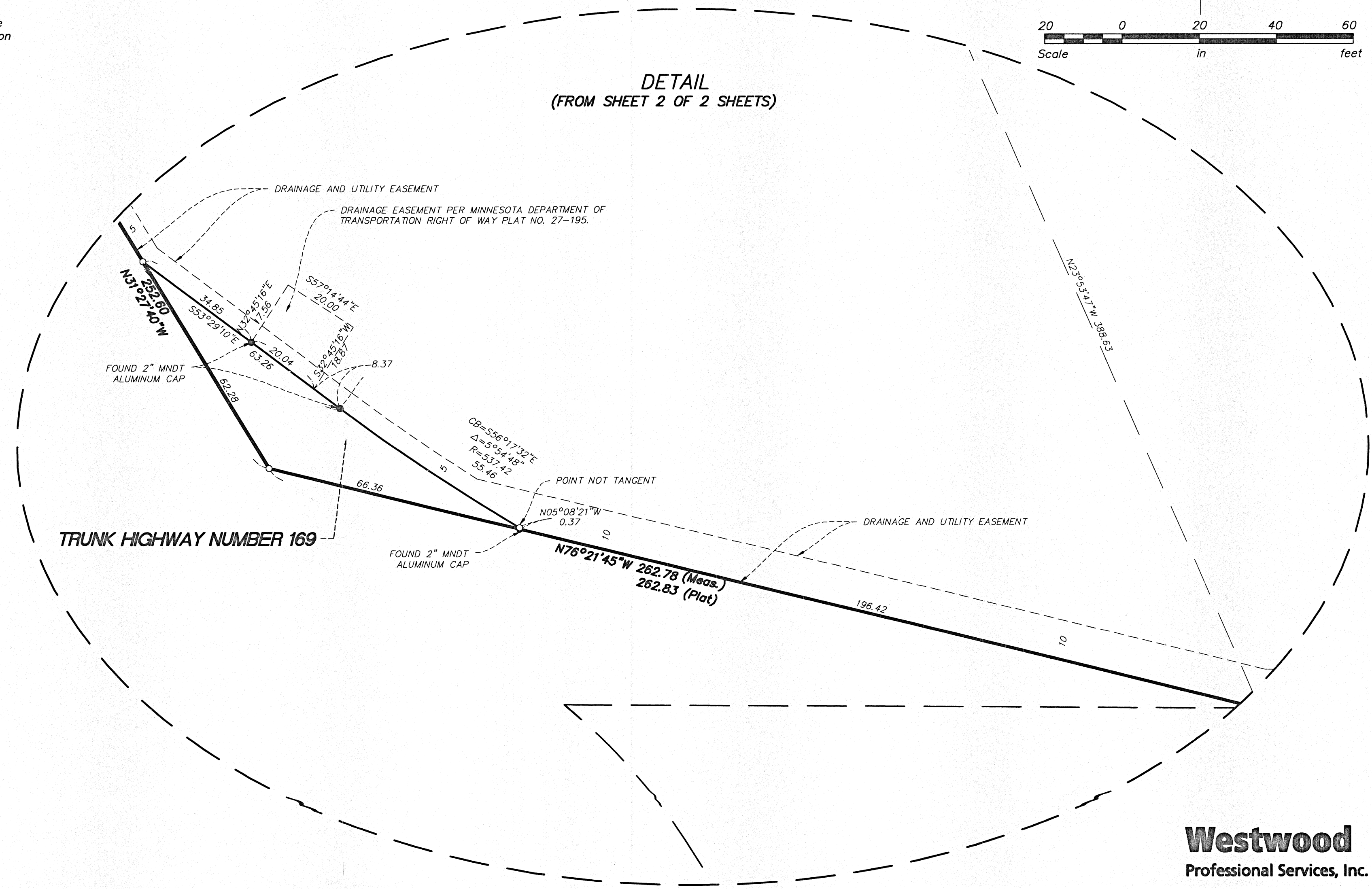
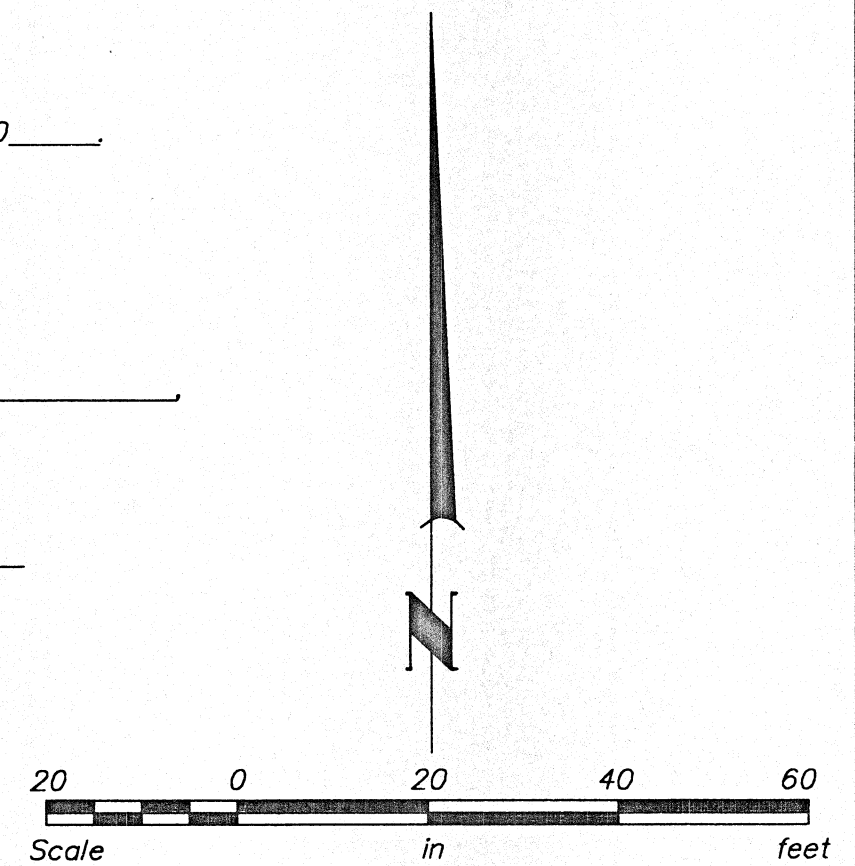
Pursuant to MINN. STAT. Sec. 383B.565 (1969) this plat has been approved this day of , 20 .

Chris F. Mavis, County Surveyor By

REGISTRAR OF TITLES, Hennepin County, Minnesota

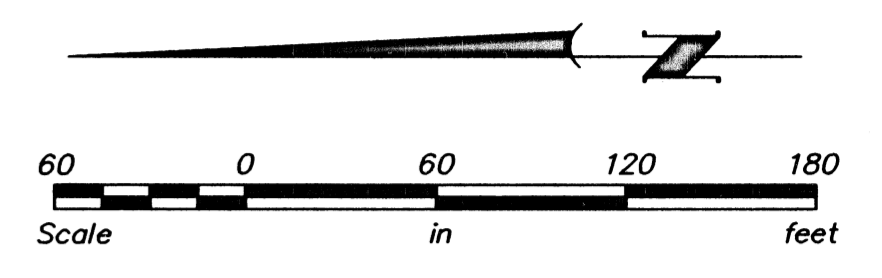
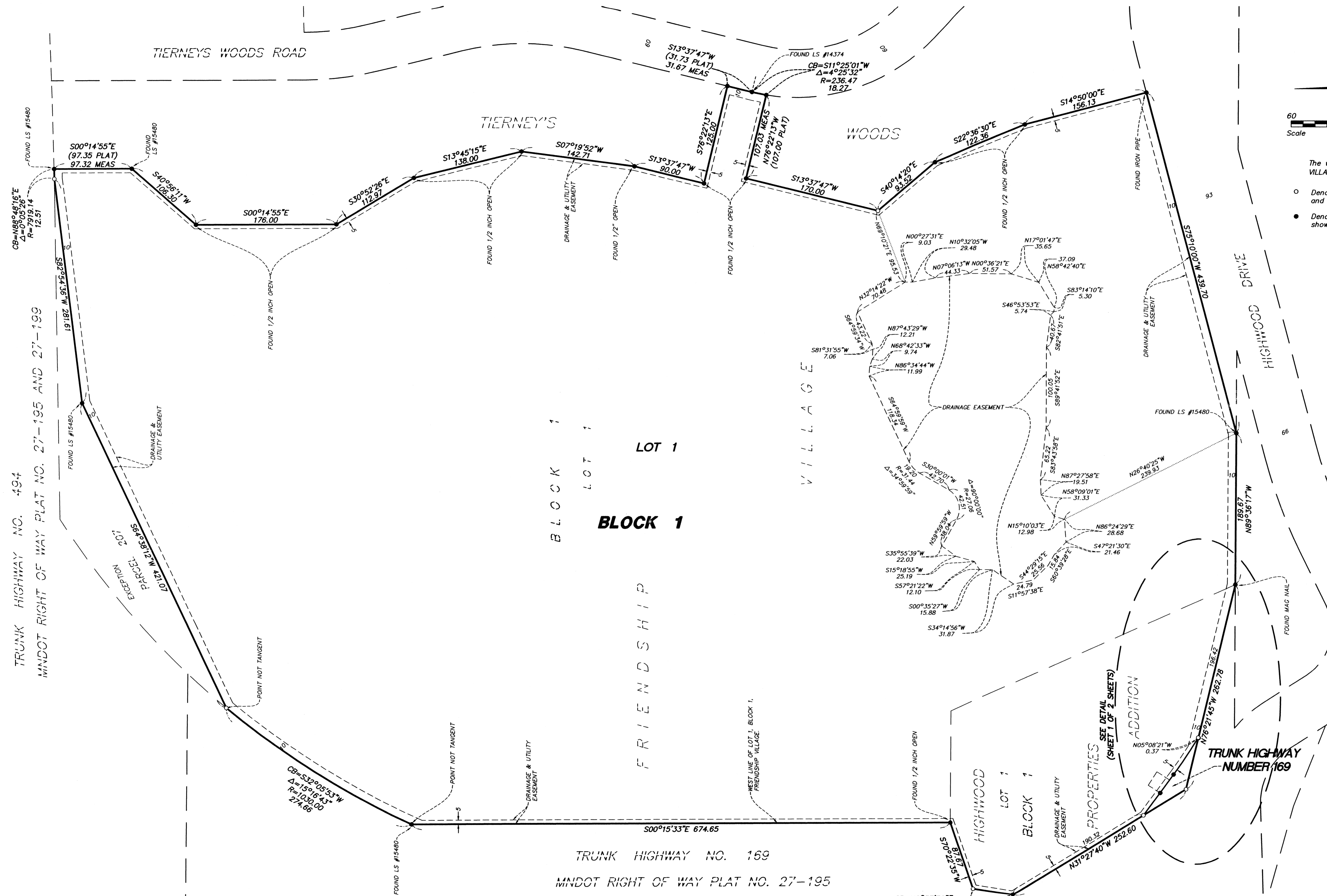
I hereby certify that the within plat of FRIENDSHIP VILLAGE 2ND ADDITION recorded in this office this day of , 20 , at o'clock M.

Martin McCormick, Registrar of Titles By Deputy



FRIENDSHIP VILLAGE 2ND ADDITION

R.T. DOC. NO. _____



The west line of Lot 1, Block 1, FRIENDSHIP VILLAGE is assumed to bear S 00°15'33" E.

- Denotes 1/2 inch by 14 inch iron rebar set and marked by License No. 23021
- Denotes an iron rebar found and marked as shown

TRUNK HIGHWAY NO. 494
MNDOT RIGHT OF WAY PLAT NO. 27-195 AND 27-199

BLOCK 1
LOT 1
BLOCK 1

TRUNK HIGHWAY NO. 169
MNDOT RIGHT OF WAY PLAT NO. 27-195