

CYPRESS SECOND ADDITION

KNOW ALL PERSONS BY THESE PRESENTS: Skywater Technology Foundry, Inc., a Delaware corporation, fee owner of the following described property:

Lots 1 and 2, Block 1, CYPRESS ADDITION.

Has caused the same to be surveyed and platted as CYPRESS SECOND ADDITION and does hereby dedicate to the public use the drainage and utility easements as created by this plat.

In witness whereof said Skywater Technology Foundry, Inc., a Delaware corporation, has caused these presents to be signed by its proper officer this 16th day of December, 2019.

Signed: Skywater Technology Foundry, Inc.

[Signature]
Its Chief Financial Officer

STATE OF MINNESOTA
COUNTY OF HENNEPIN

This instrument was acknowledged before me on this 16th day of December, 2019, by Robert B. Hale, Chief Financial Officer of Skywater Technology Foundry, Inc., a Delaware corporation, on behalf of the corporation.

[Signature]
Signature of Notary

Mary L. George
Notary's Printed Name
Notary Public, Hennepin County, Minnesota
My Commission Expires Jan 31, 2022.

I, Scott Alwin, do hereby certify that this plat was prepared by me or under my direct supervision; that I am a duly Licensed Land Surveyor in the State of Minnesota; that this plat is a correct representation of the boundary survey; that all mathematical data and labels are correctly designated on this plat; that all monuments depicted on this plat have been, or will be correctly set within one year; that all water boundaries and wet lands, as defined in Minnesota Statutes, Section 505.01, Subd. 3, as of the date of this certificate are shown and labeled on this plat; and all public ways are shown and labeled on this plat.

Dated this 16th day of December, 2019.

[Signature]
Scott Alwin, Licensed Land Surveyor
Minnesota License No. 53528

STATE OF MINNESOTA
COUNTY OF HENNEPIN

This instrument was acknowledged before me this 16th day of December, 2019, by Scott Alwin.

[Signature]
Signature of Notary

Michael R. Williams
Notary's Printed Name
Notary Public, Hennepin County, Minnesota
My Commission Expires January 31, 2024.

CITY COUNCIL, CITY OF BLOOMINGTON, MINNESOTA

I hereby certify that this plat of CYPRESS SECOND ADDITION was approved by the City Council of the City of Bloomington, Minnesota, at a regular meeting thereof held 26th day of October, 2019, and said plat is in compliance with the provisions of Minnesota Statutes, Section 505.03, Subd. 2.

CITY COUNCIL, CITY OF BLOOMINGTON, MINNESOTA
By [Signature], Mayor

By [Signature], City Manager

RESIDENT AND REAL ESTATE SERVICES, Hennepin County, Minnesota

I hereby certify that taxes payable in 20 and prior years have been paid for land described on this plat, dated this day of , 20 .

Mark V. Chapin, County Auditor

By , Deputy

SURVEY DIVISION, Hennepin County, Minnesota

Pursuant to Minnesota Statute Section 383B.565 (1969), this Plat has been approved this day of , 20 .

Chris F. Mavis, County Surveyor

By

COUNTY RECORDER, Hennepin County, Minnesota

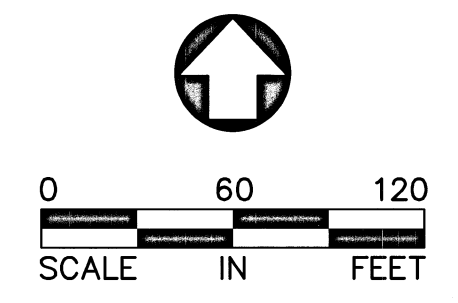
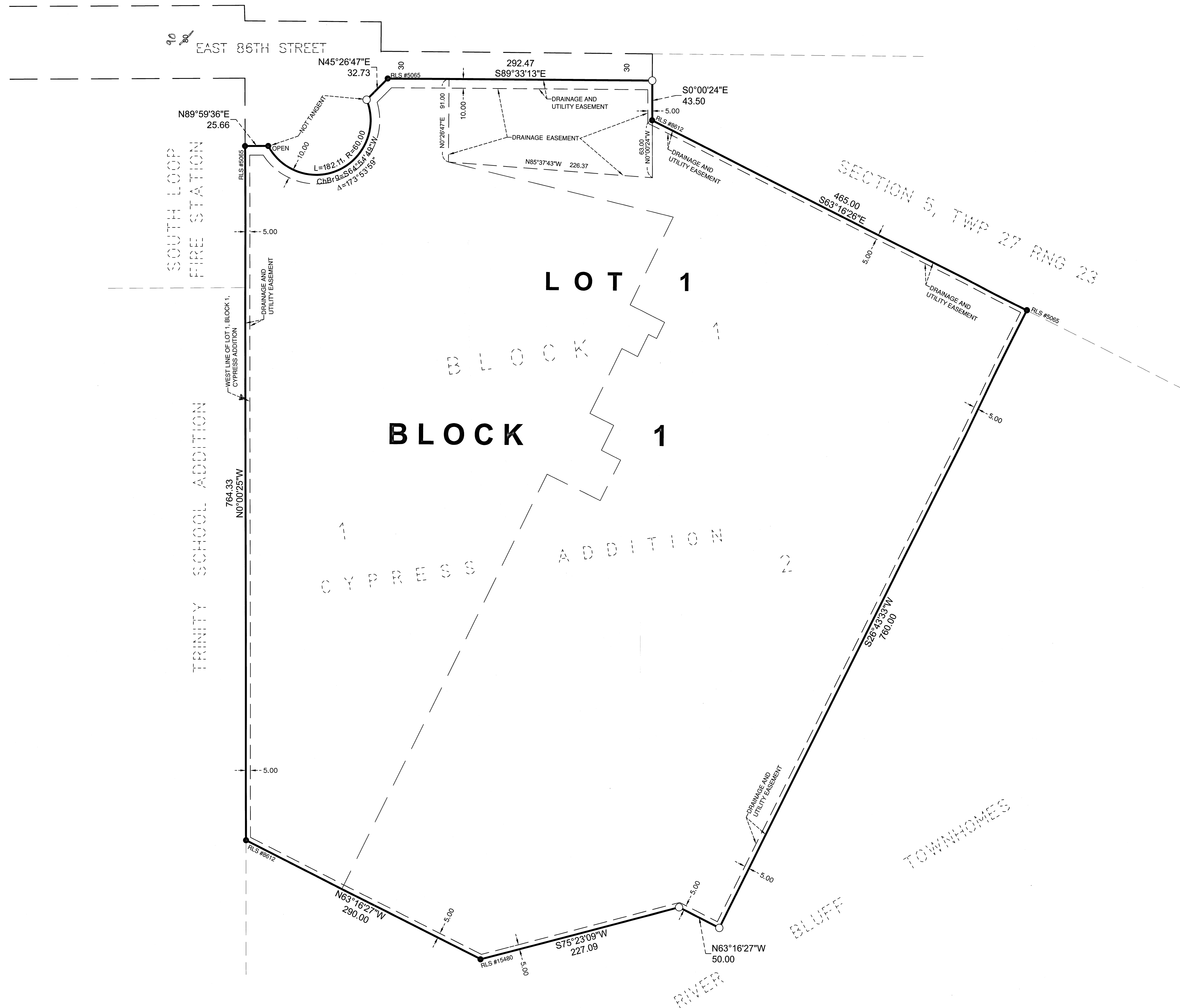
I hereby certify that the within plat of CYPRESS SECOND ADDITION was recorded in this office this day of , 20 , at o'clock M.

Martin McCormick, County Recorder

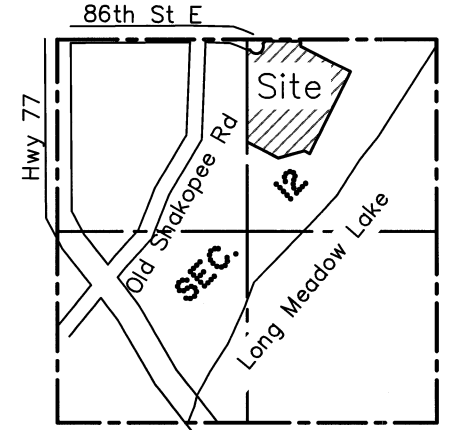
By , Deputy



CYPRESS SECOND ADDITION



VICINITY MAP (Not To Scale)



Sec. 12 Twp. 27 N., Rge. 24 W., 4th Principal Meridian

- BASIS OF BEARING
- THE ORIENTATION OF THIS BEARING SYSTEM IS BASED ON THE WEST LINE OF LOT 1, BLOCK 1, CYPRESS ADDITION, AND IS ASSUMED TO BEAR NORTH 0° 00' 25" WEST.
- LEGEND
- DENOTES 1/2" IRON MONUMENT FOUND
- DENOTES IRON MONUMENT SET AND CAPPED WITH RLS #53528

