

This CIC PLAT is part of the Declaration recorded
Document No. 10579645 & 10579646
on this 7th day of August, 2018
Hennepin County Recorder

CIC NUMBER 2091 A Condominium BLOOMINGTON COMMERCIAL CONDOMINIUMS CIC PLAT

SITE PLAN

I, Arlee J. Carlson, do hereby certify that the work was undertaken by or reviewed and approved by me for this
CIC Plat of CIC NUMBER 2091, a condominium, Bloomington Commercial Condominiums being located upon:

Lot 1, Block 1, Forest Glen 2nd Addition

and that this CIC plat fully and accurately depicts all information required by Minnesota Statutes, Section
515B.2-1101(c); and that I am a duly Licensed Land Surveyor under the laws of the state of Minnesota.

Dated this 12th day of July, 2018

Arlee J. Carlson
Arlee J. Carlson, Licensed Land Surveyor,
Minnesota License No. 44900

STATE OF MINNESOTA
COUNTY OF HENNEPIN

The foregoing instrument was acknowledged before me this 12th day of July, 2018, by Arlee J. Carlson,
a Licensed Land Surveyor.

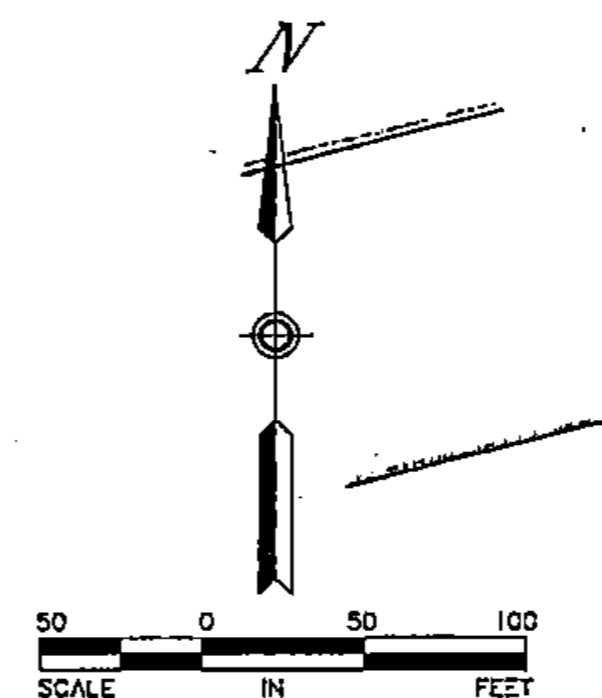
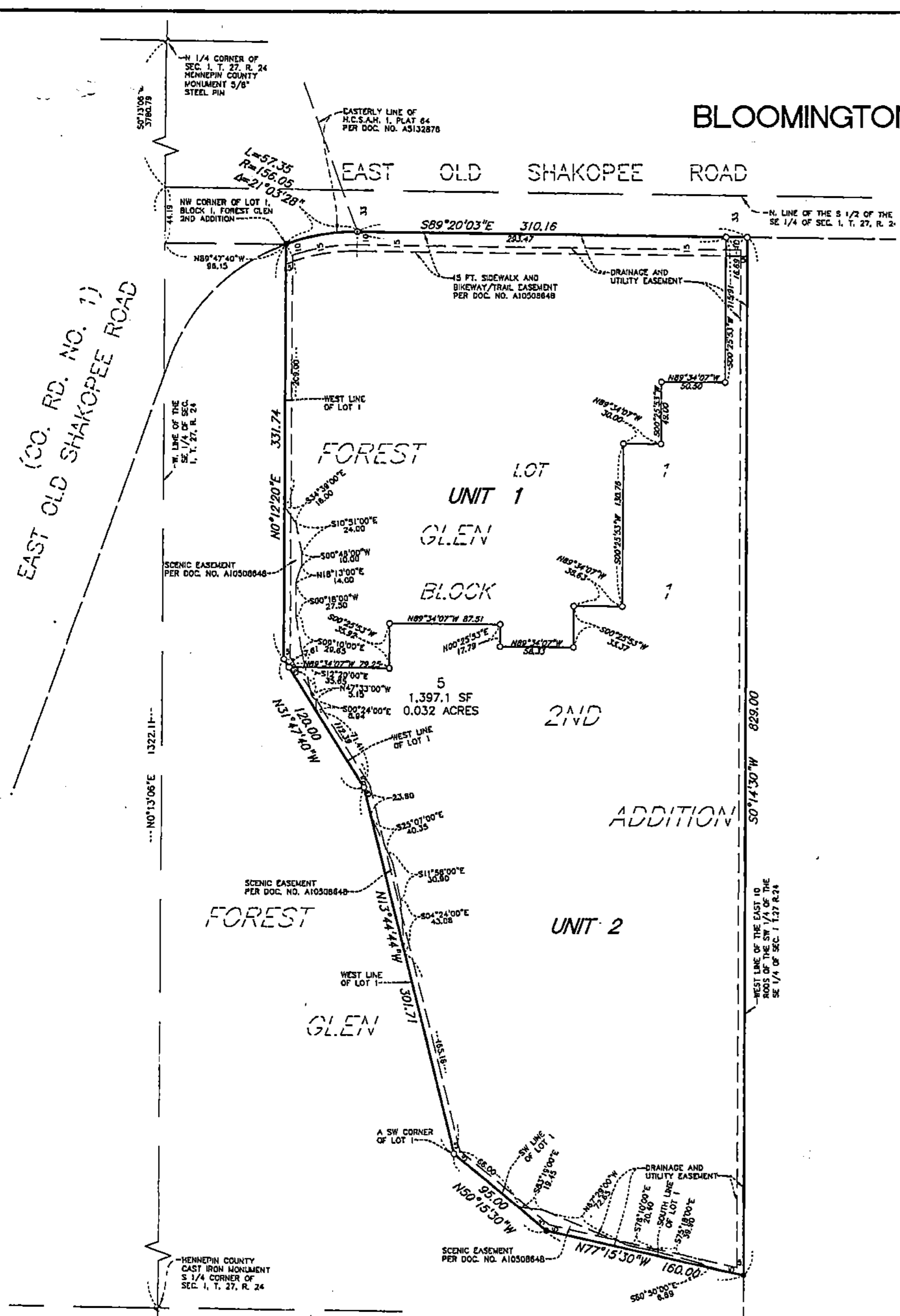
Maria J. Way
Maria J. Way
Notary Public, Dakota County, Minnesota
My Commission Expires January 31, 2020

Survey Division, Hennepin County, Minnesota.

This CIC PLAT has been reviewed and is approved this 7th day of August, 2018

Chris F. Mavis, Hennepin County Surveyor

By: [Signature]



- Denotes set 1/2 inch iron monument with PLS 44900
- Denotes found 1/2 inch open iron monument
- ⊙ Denotes found 2 inch pipe with nail in center



3.090