

CIC NUMBER 1321  
A CONDOMINIUM  
WEDGEWOOD TOWNHOME CONDOMINIUMS  
CIC PLAT  
SITE PLAN

This CIC PLAT is part of Declaration recorded as Document No. 8349188 on this 10th day of May, 2004. Hennepin County Recorder

I, Thomas E. Hodorff, do hereby certify that the work was undertaken by me for this CIC PLAT of CIC NUMBER 1321, A CONDOMINIUM, WEDGEWOOD TOWNHOME CONDOMINIUMS, being located upon:

Lot 1, Block 1, Douglas 2nd Addition, Hennepin County, Minnesota and that this CIC plat fully and accurately depicts all information required by Minnesota Statutes, Section 515B.2-110.

Dated this 10th day of MAY 2004. Thomas E. Hodorff, Licensed Professional Land Surveyor Minnesota License No. 23677

STATE OF MINNESOTA COUNTY OF HENNEPIN The foregoing instrument was acknowledged before me this 10th day of May 2004, by Thomas E. Hodorff, a Licensed Professional Land Surveyor.

Notary Public DREW J. ANDERSON County, Minnesota. My commission expires 1-31-07

I, Edward J. Vogt, pursuant to Minnesota Statutes, Section 515B.2-101(c), do hereby certify that all structural components and mechanical systems serving more than one unit in all buildings containing the units hereby created are substantially completed.

Dated this 10th day of MAY 2004. Edward J. Vogt, Registered Professional Architect Minnesota Registration No. 5115

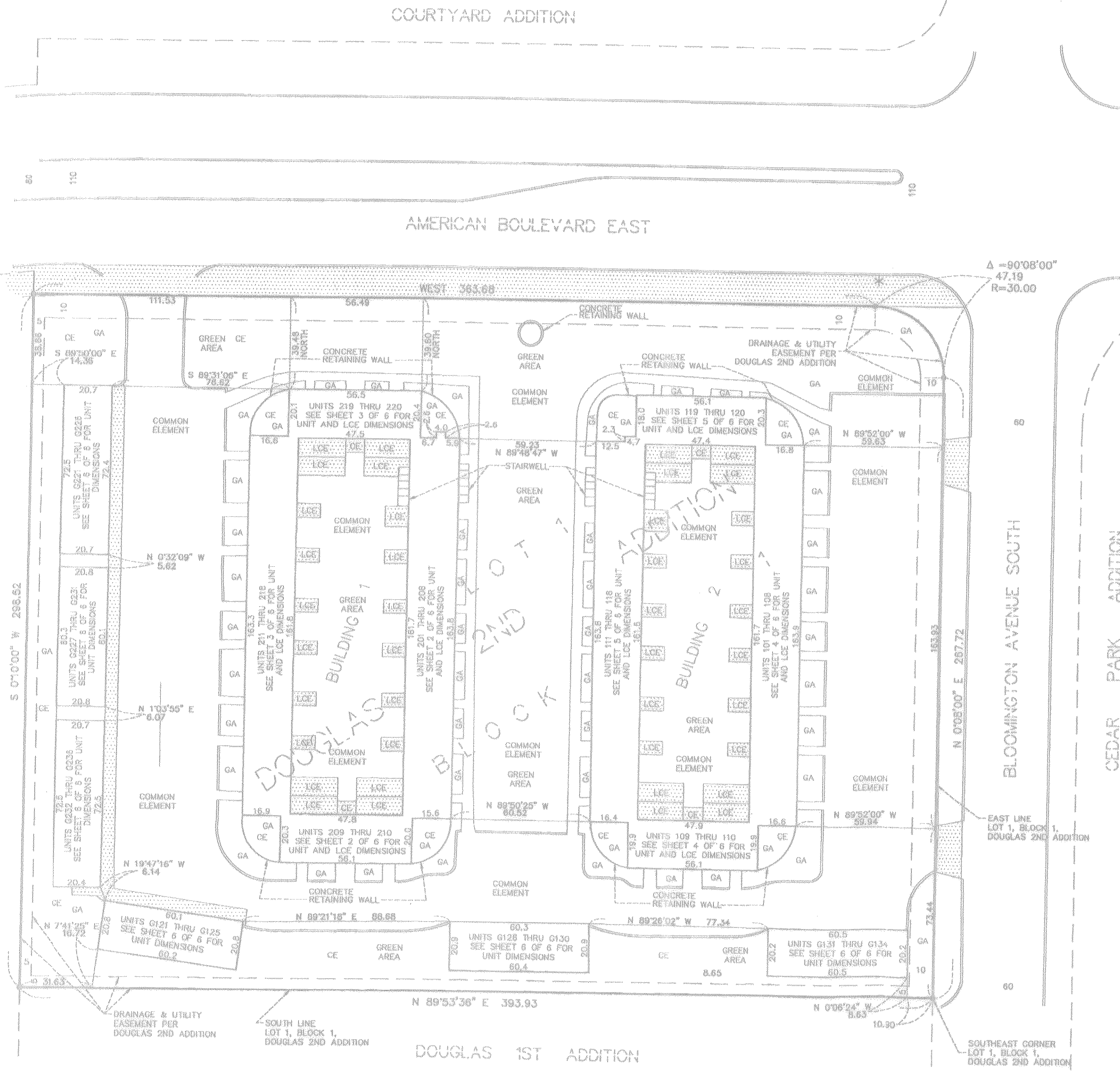
STATE OF MINNESOTA COUNTY OF HENNEPIN The foregoing instrument was acknowledged before me this 10th day of May 2004, by Edward J. Vogt, a Licensed Architect.

Notary Public DREW J. ANDERSON County, Minnesota. My commission expires 1-31-07

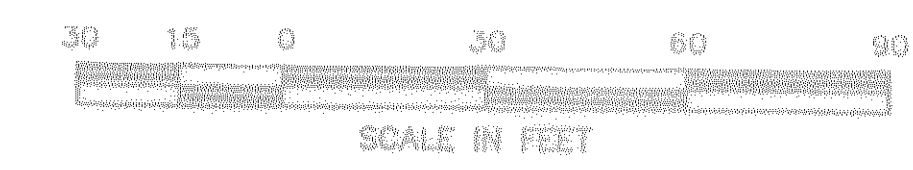
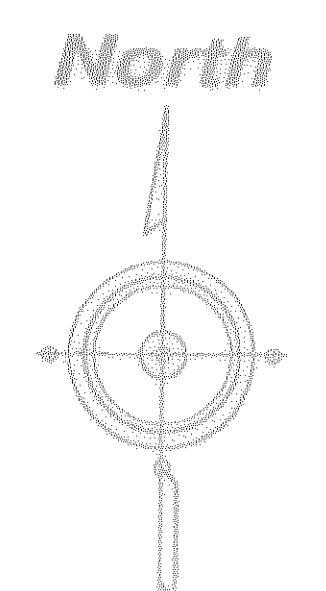
SURVEY DIVISION, Hennepin County, Minnesota This CIC plat has been reviewed and is approved this 10th day of MAY 2004.

By Robert A. Wied, William P. Brown, Hennepin County Surveyor

A NT ej

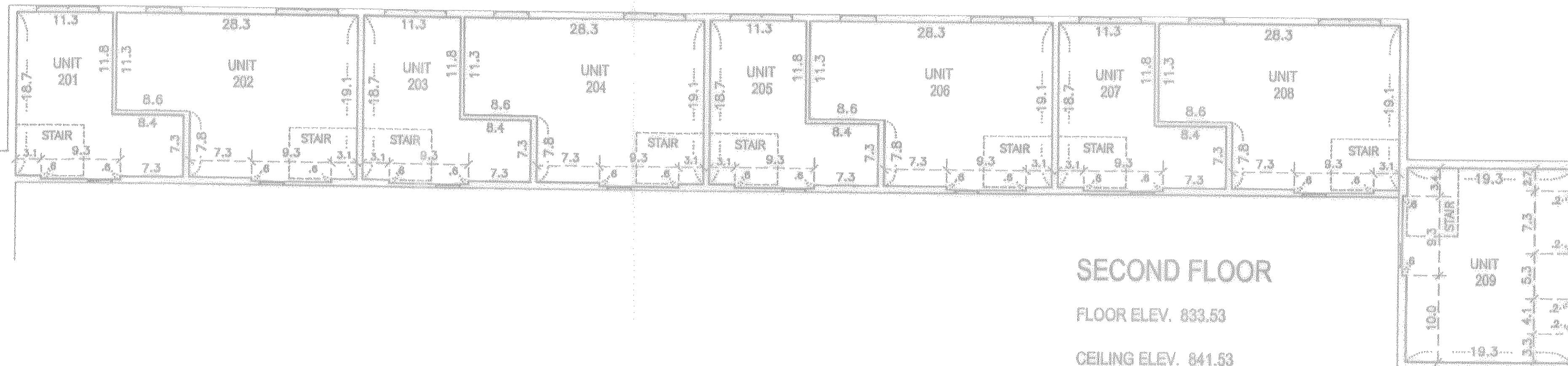
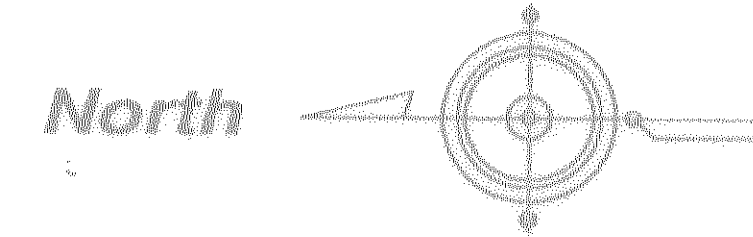


- THE BEARING SYSTEM USED IS BASED ON THE WEST LINE OF LOT 1, BLOCK 1, DOUGLAS 2ND ADDITION, WHICH HAS AN ASSUMED BEARING OF N 0°10'00" E.
- CE COMMON ELEMENT
- LCE LIMITED COMMON ELEMENT
- GA GREEN AREA
- DENOTES IRON MONUMENT FOUND.
- \* BENCHMARK: TOP NUT HYDRANT, SOUTHWEST QUADRANT OF 79TH STREET EAST AND BLOOMINGTON AVENUE ELEVATION = 827.85 FEET, NATIONAL GEODETIC VERTICAL DATUM - 1929.
- DENOTES CONCRETE CURB
- ▨ DENOTES CONCRETE SURFACE
- ALL PATHS, ROADS AND DRIVEWAYS SHOWN ARE BITUMINOUS.
- ALL AIR CONDITIONING UNITS AND PATIOS ARE LIMITED COMMON ELEMENTS ASSIGNED TO THE UNIT ADJOINING THEREOF.

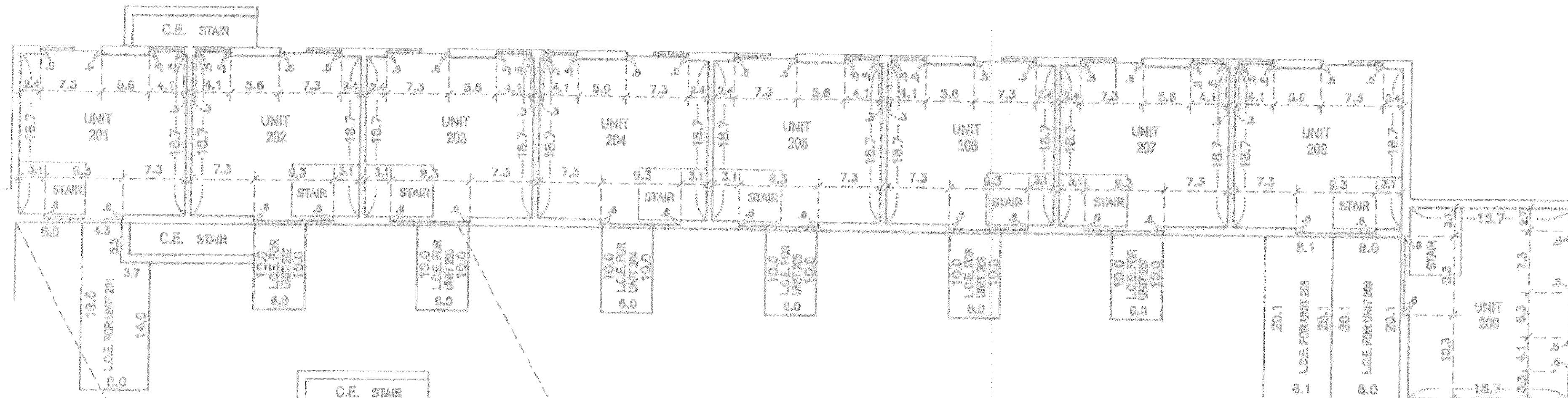


HARRY S. JOHNSON LAND SURVEYORS

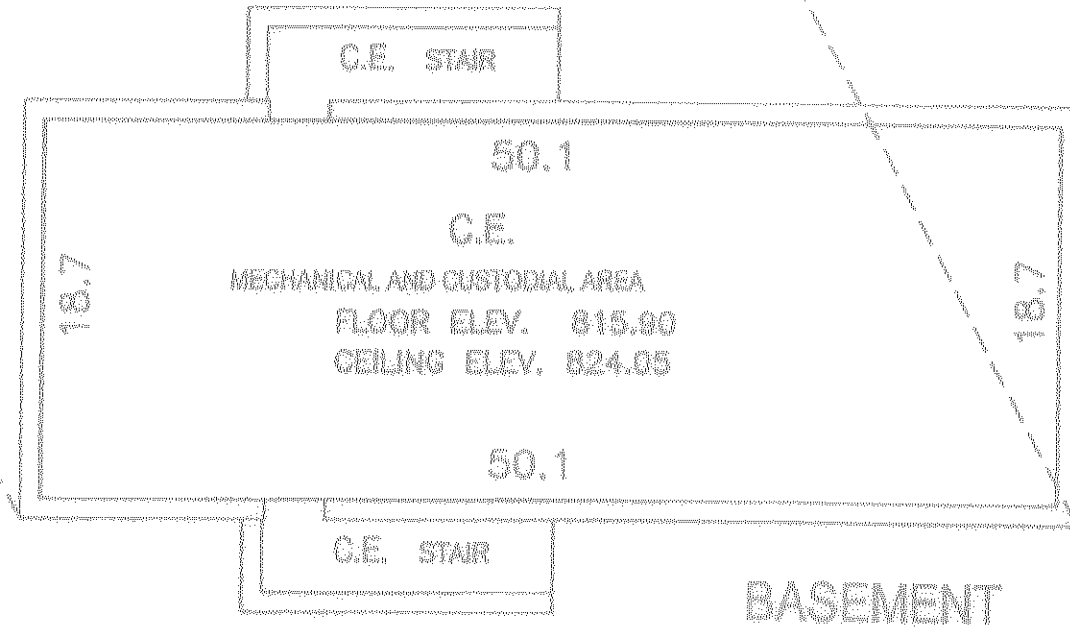
CIC NUMBER 1321  
A CONDOMINIUM  
WEDGEWOOD TOWNHOME CONDOMINIUMS  
CIC PLAT  
BUILDING 1 FLOOR PLANS, EAST AND SOUTH SIDES



SECOND FLOOR  
FLOOR ELEV. 833.53  
CEILING ELEV. 841.53



FIRST FLOOR  
FLOOR ELEV. 824.65  
CEILING ELEV. 832.65



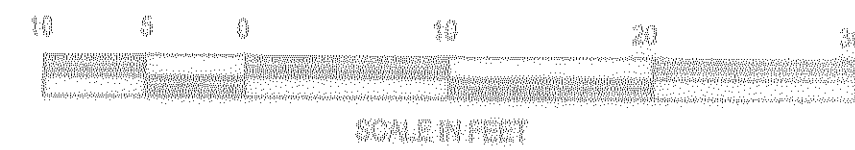
BASEMENT

ABBREVIATIONS AND SYMBOLS:

ELEV.	ELEVATION
C.E.	COMMON ELEMENT
L.C.E.	LIMITED COMMON ELEMENT
X-X	DIMENSIONAL NOTATION

GENERAL NOTES:

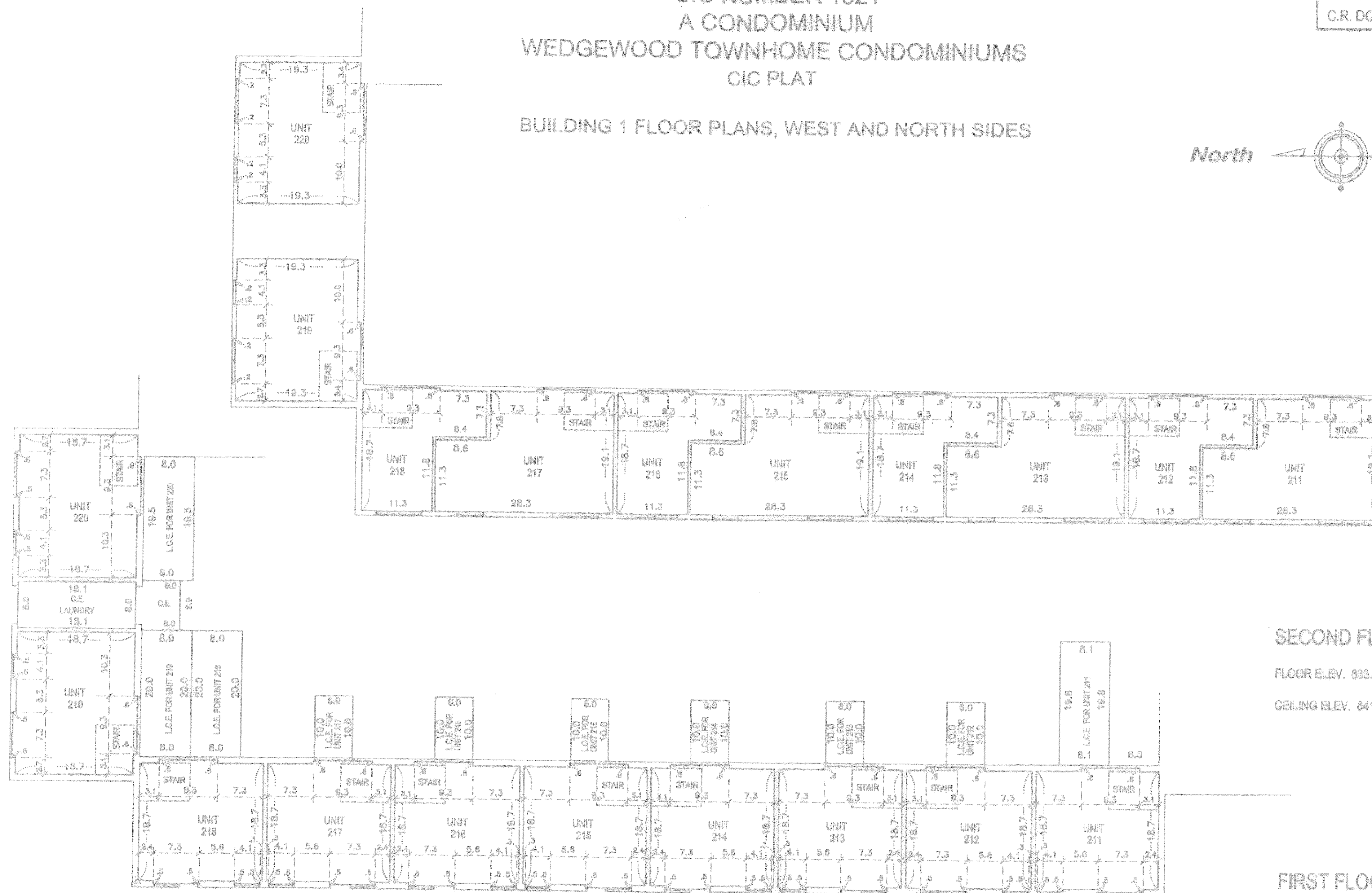
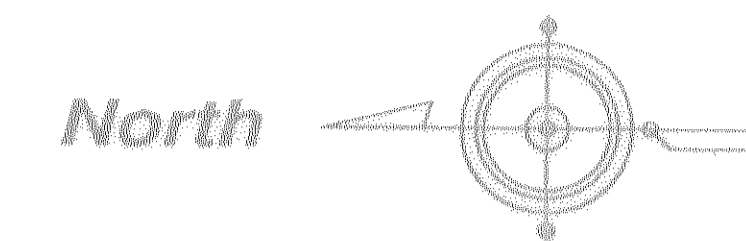
- ELEVATIONS ARE REFERENCED TO A BENCHMARK SHOWN ON THE SITE PLAN (SHEET ONE OF FOUR SHEETS) AND SHOWN IN FEET AND HUNDREDTHS OF A FOOT.
- MEASUREMENTS SHOWN ARE FROM INSIDE FACE OF WALL TO INSIDE FACE OF WALL AND SHOWN IN FEET AND TENTHS OF A FOOT.
- ANY IMPROVEMENTS LYING WITHIN A LIMITED COMMON ELEMENT SHALL BE CONSIDERED A PART OF THE LIMITED COMMON ELEMENT. ALL LIMITED COMMON ELEMENTS SHOWN ARE AS BUILT.



VOGT ARCHITECTURAL SERVICES, LLC  
ARCHITECTURE & PLANNING

CIC NUMBER 1321  
A CONDOMINIUM  
WEDGEWOOD TOWNHOME CONDOMINIUMS  
CIC PLAT

BUILDING 1 FLOOR PLANS, WEST AND NORTH SIDES



SECOND FLOOR

FLOOR ELEV. 833.53

CEILING ELEV. 841.53

FIRST FLOOR

FLOOR ELEV. 824.65

CEILING ELEV. 832.65

ABBREVIATIONS AND SYMBOLS:

- ELEV. ELEVATION
- C.E. COMMON ELEMENT
- L.C.E. LIMITED COMMON ELEMENT
- X-X DIMENSIONAL NOTATION

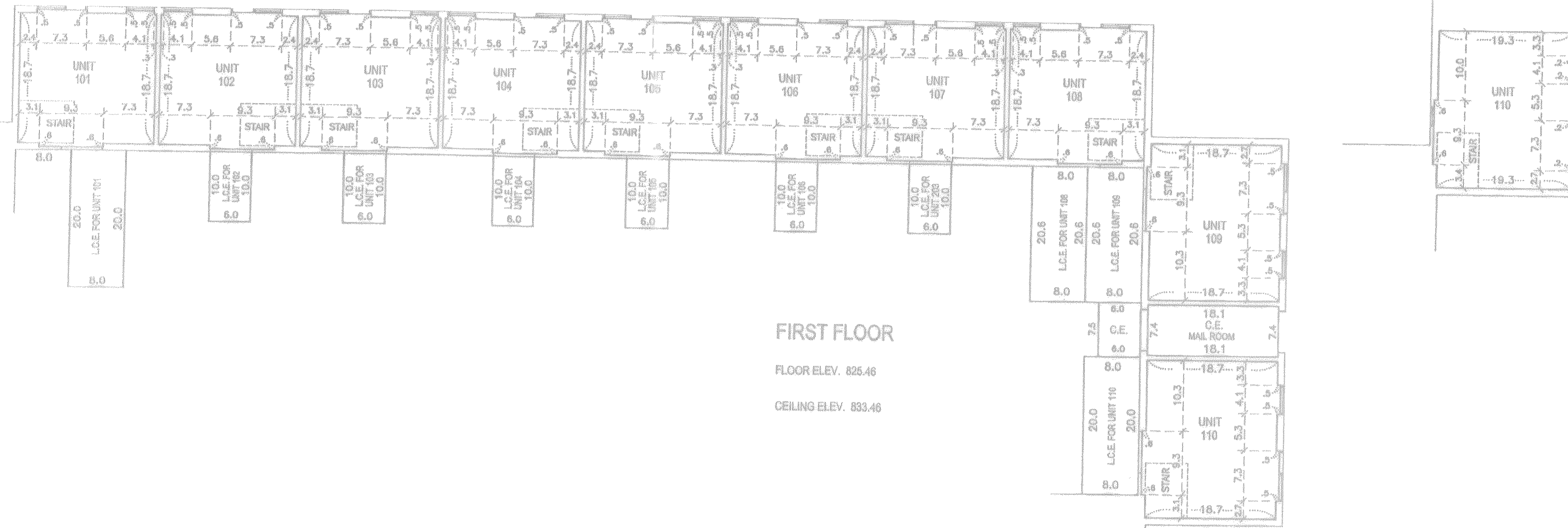
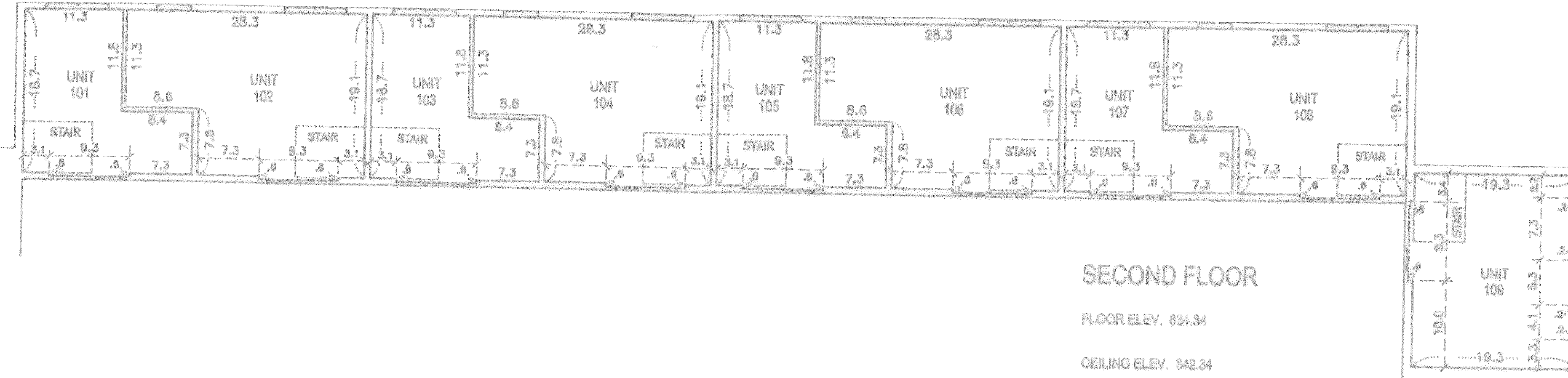
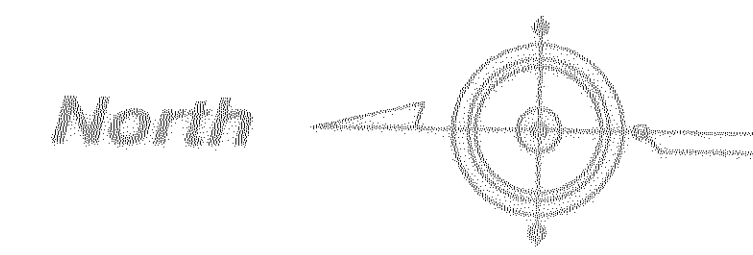
GENERAL NOTES:

1. ELEVATIONS ARE REFERENCED TO A BENCH MARK SHOWN ON THE SITE PLAN (SHEET ONE OF FOUR SHEETS) AND SHOWN IN FEET AND HUNDREDTHS OF A FOOT.
2. MEASUREMENTS SHOWN ARE FROM INSIDE FACE OF WALL TO INSIDE FACE OF WALL AND SHOWN IN FEET AND TENTHS OF A FOOT.
3. ANY IMPROVEMENTS LYING WITHIN A LIMITED COMMON ELEMENT SHALL BE CONSIDERED A PART OF THE LIMITED COMMON ELEMENT. ALL LIMITED COMMON ELEMENTS SHOWN ARE AS BUILT.



VOGT ARCHITECTURAL SERVICES, LLC  
ARCHITECTURE & PLANNING

CIC NUMBER 1321  
A CONDOMINIUM  
WEDGEWOOD TOWNHOME CONDOMINIUMS  
CIC PLAT  
BUILDING 2 FLOOR PLANS, EAST AND SOUTH SIDES



ABBREVIATIONS AND SYMBOLS:

ELEV.	ELEVATION
C.E.	COMMON ELEMENT
L.C.E.	LIMITED COMMON ELEMENT
X-X	DIMENSIONAL NOTATION

GENERAL NOTES:

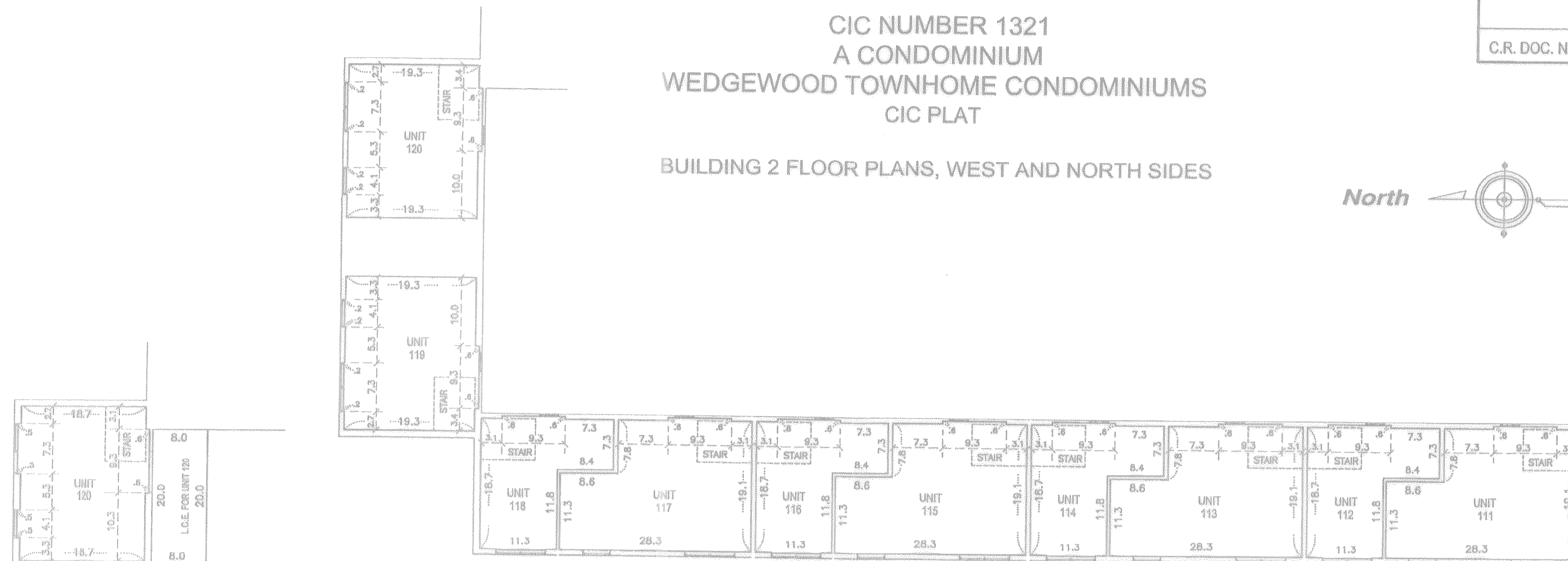
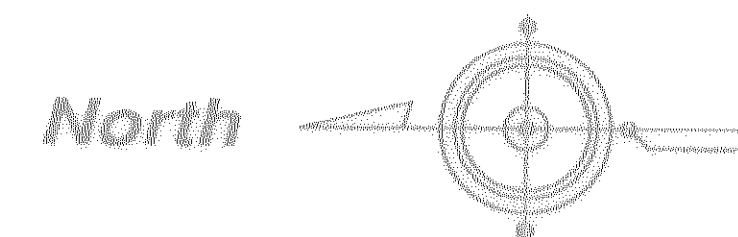
- ELEVATIONS ARE REFERENCED TO A BENCHMARK SHOWN ON THE SITE PLAN (SHEET ONE OF FOUR SHEETS) AND SHOWN IN FEET AND HUNDREDTHS OF A FOOT.
- MEASUREMENTS SHOWN ARE FROM INSIDE FACE OF WALL TO INSIDE FACE OF WALL AND SHOWN IN FEET AND TENTHS OF A FOOT.
- ANY IMPROVEMENTS LYING WITHIN A LIMITED COMMON ELEMENT SHALL BE CONSIDERED A PART OF THE LIMITED COMMON ELEMENT. ALL LIMITED COMMON ELEMENTS SHOWN ARE AS BUILT.



VOGT ARCHITECTURAL SERVICES, L.L.C  
ARCHITECTURE & PLANNING

CIC NUMBER 1321  
A CONDOMINIUM  
WEDGEWOOD TOWNHOME CONDOMINIUMS  
CIC PLAT

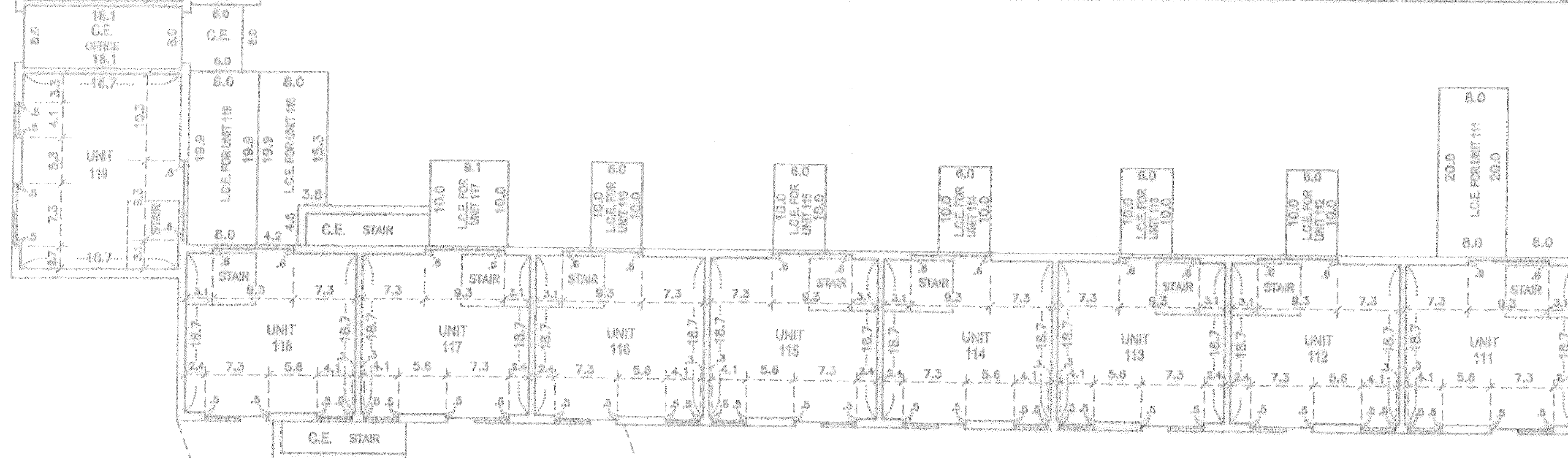
BUILDING 2 FLOOR PLANS, WEST AND NORTH SIDES



SECOND FLOOR

FLOOR ELEV. 834.34

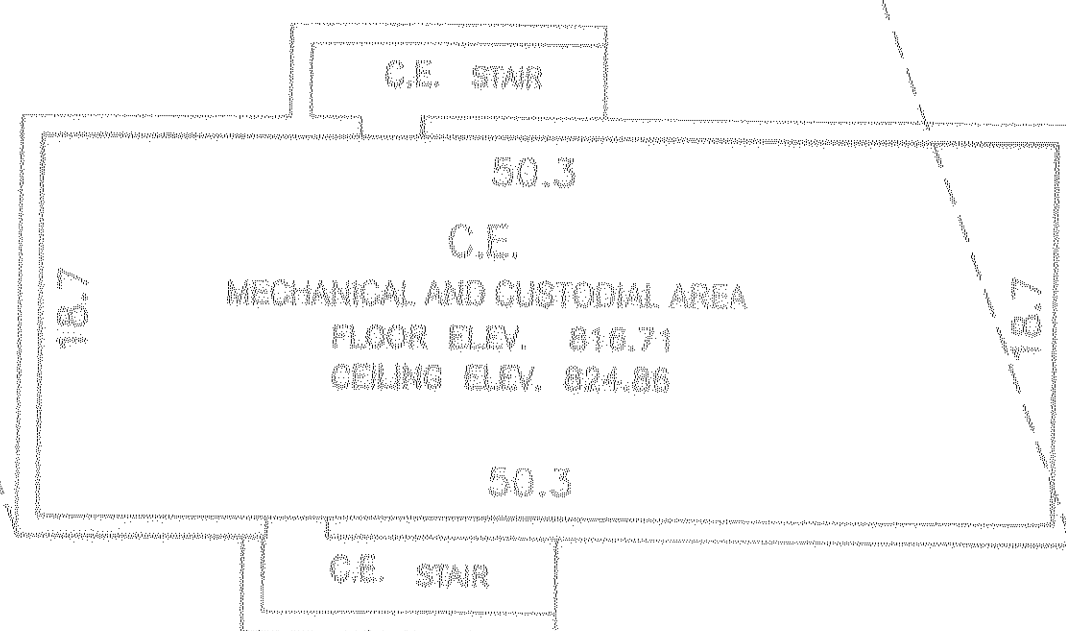
CEILING ELEV. 842.34



FIRST FLOOR

FLOOR ELEV. 825.46

CEILING ELEV. 833.46



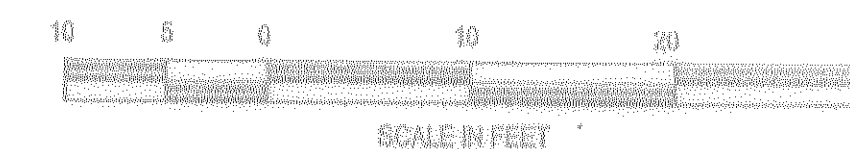
BASEMENT

ABBREVIATIONS AND SYMBOLS:

ELEV.	ELEVATION
C.E.	COMMON ELEMENT
L.C.E.	LIMITED COMMON ELEMENT
-X-X-	DIMENSIONAL NOTATION

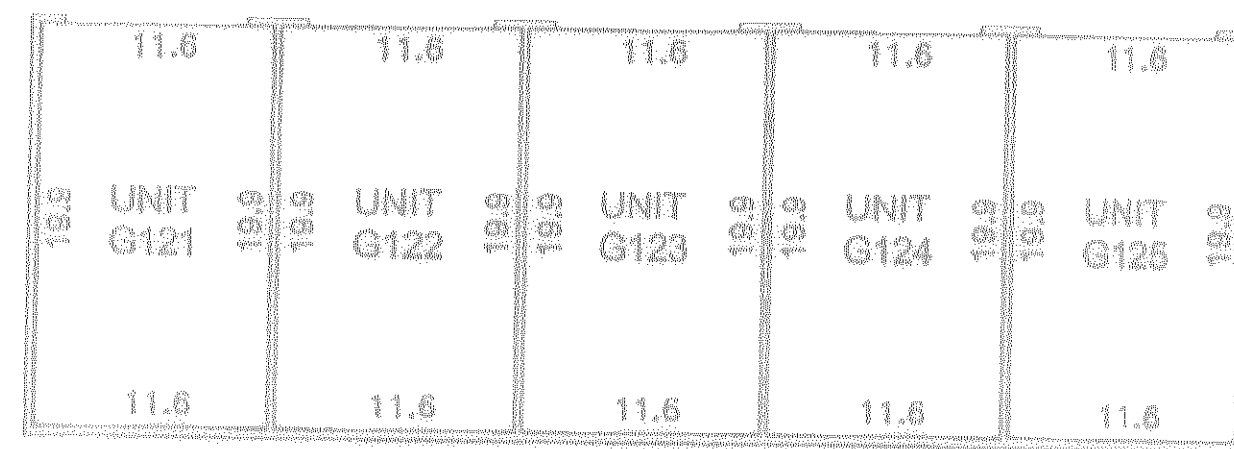
GENERAL NOTES:

- ELEVATIONS ARE REFERENCED TO A BENCH MARK SHOWN ON THE SITE PLAN (SHEET ONE OF FOUR SHEETS) AND SHOWN IN FEET AND HUNDREDTHS OF A FOOT.
- MEASUREMENTS SHOWN ARE FROM INSIDE FACE OF WALL TO INSIDE FACE OF WALL AND SHOWN IN FEET AND TENTHS OF A FOOT.
- ANY IMPROVEMENTS LYING WITHIN A LIMITED COMMON ELEMENT SHALL BE CONSIDERED A PART OF THE LIMITED COMMON ELEMENT. ALL LIMITED COMMON ELEMENTS SHOWN ARE AS BUILT.

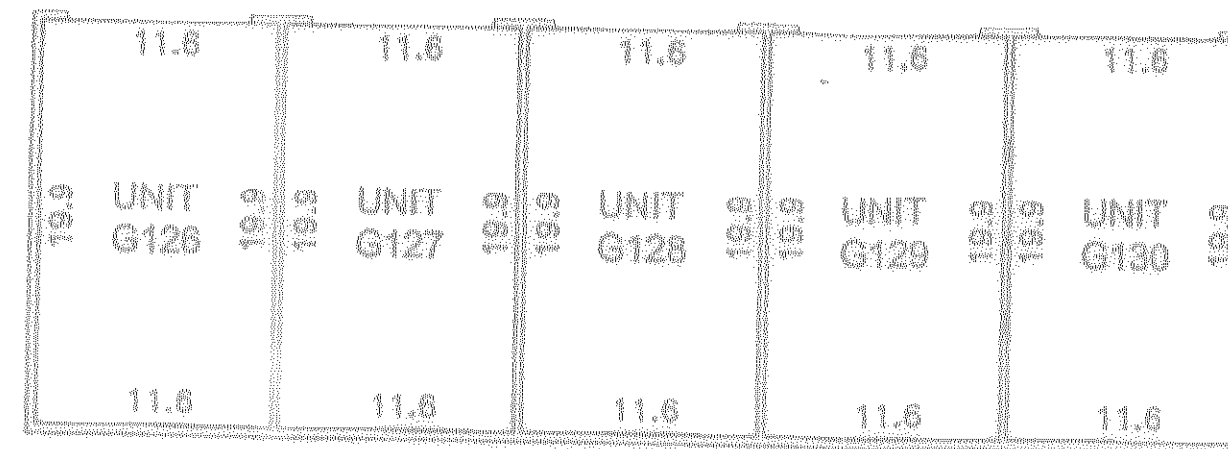


VOGT ARCHITECTURAL SERVICES, LLC  
ARCHITECTURE & PLANNING

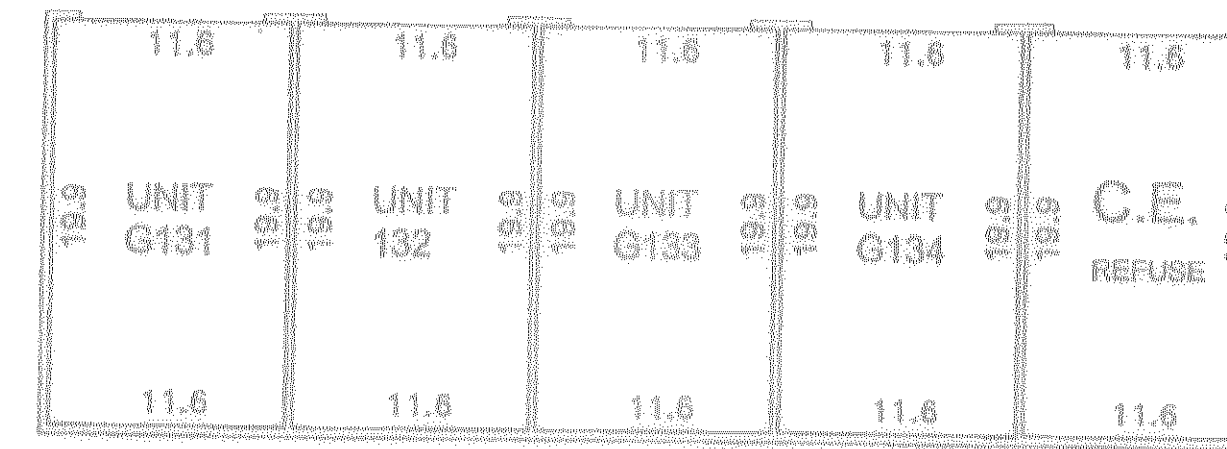
CIC NUMBER 1321  
A CONDOMINIUM  
WEDGEWOOD TOWNHOME CONDOMINIUMS  
CIC PLAT  
GARAGE FLOOR PLANS



FLOOR ELEVATION 824.54  
UNDERSIDE OF RAFTER ELEVATION 832.64

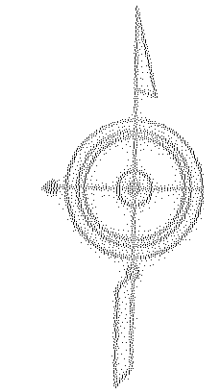


FLOOR ELEVATION 824.43  
UNDERSIDE OF RAFTER ELEVATION 832.53

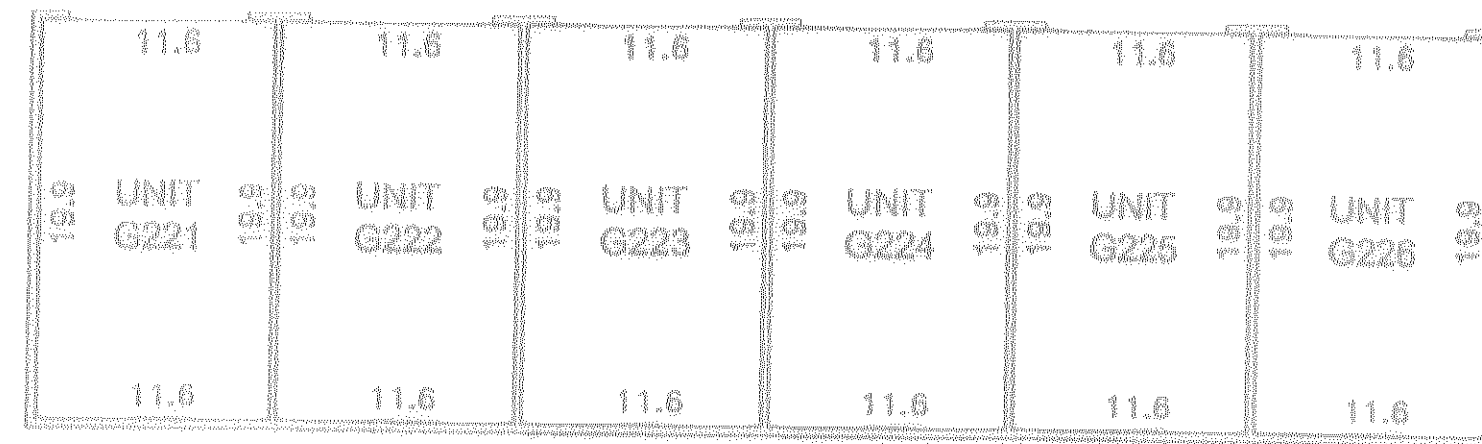


FLOOR ELEVATION 825.30  
UNDERSIDE OF RAFTER ELEVATION 833.40

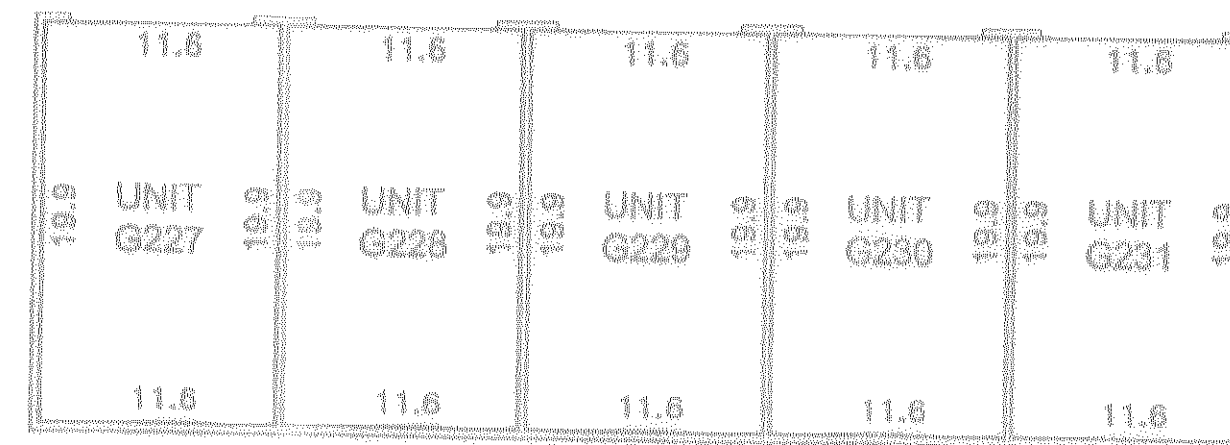
North



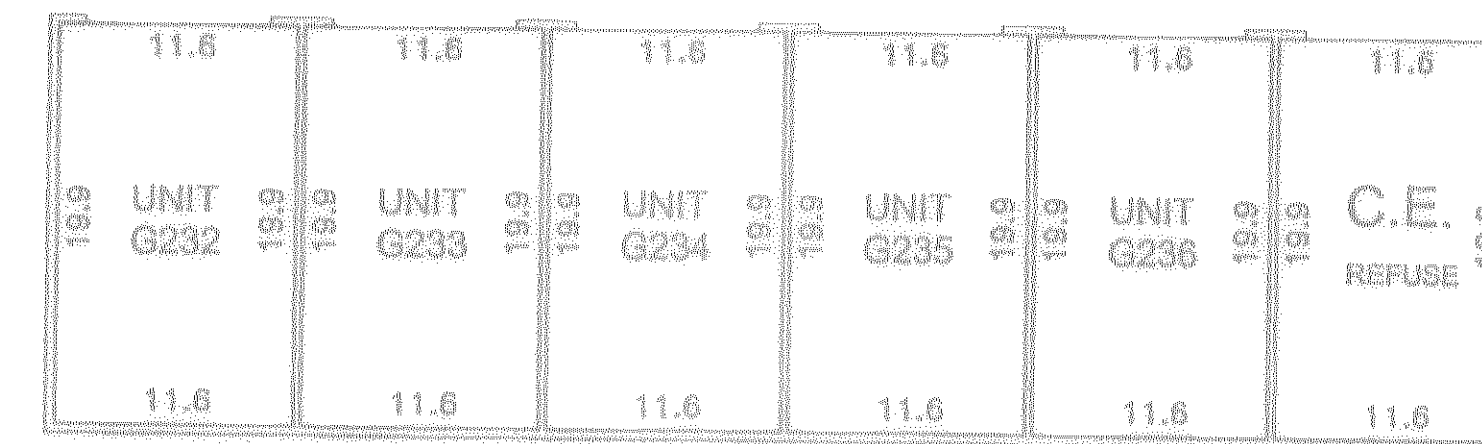
GARAGE UNITS AT SOUTH SIDE OF SITE



FLOOR ELEVATION 824.30  
UNDERSIDE OF RAFTER ELEVATION 832.40

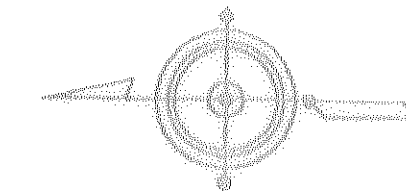


FLOOR ELEVATION 824.30  
UNDERSIDE OF RAFTER ELEVATION 832.40



FLOOR ELEVATION 824.28  
UNDERSIDE OF RAFTER ELEVATION 832.38

North



GARAGE UNITS AT WEST SIDE OF SITE

GENERAL NOTES:

- ELEVATIONS ARE REFERENCED TO A BENCH MARK SHOWN ON THE SITE PLAN (SHEET ONE OF FOUR SHEETS) AND SHOWN IN FEET AND HUNDREDTHS OF A FOOT.
- MEASUREMENTS SHOWN ARE FROM INSIDE FACE OF WALL TO INSIDE FACE OF WALL AND SHOWN IN FEET AND TENTHS OF A FOOT.



VOGT ARCHITECTURAL SERVICES, LLC  
ARCHITECTURE & PLANNING

A

CS