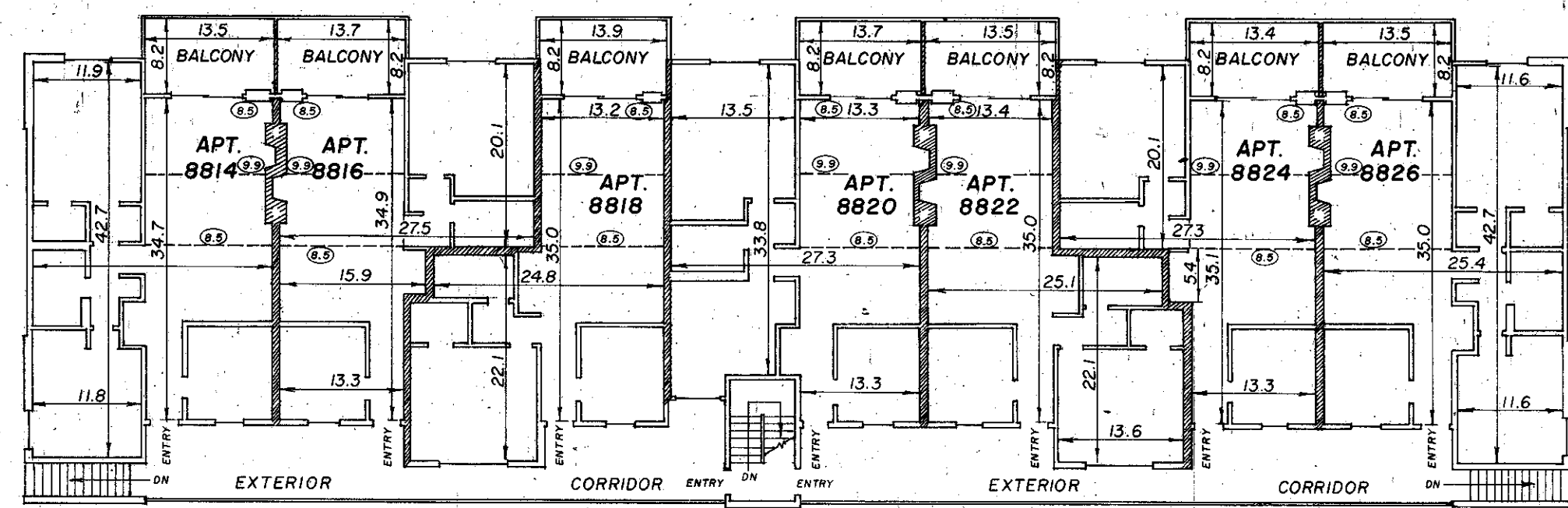


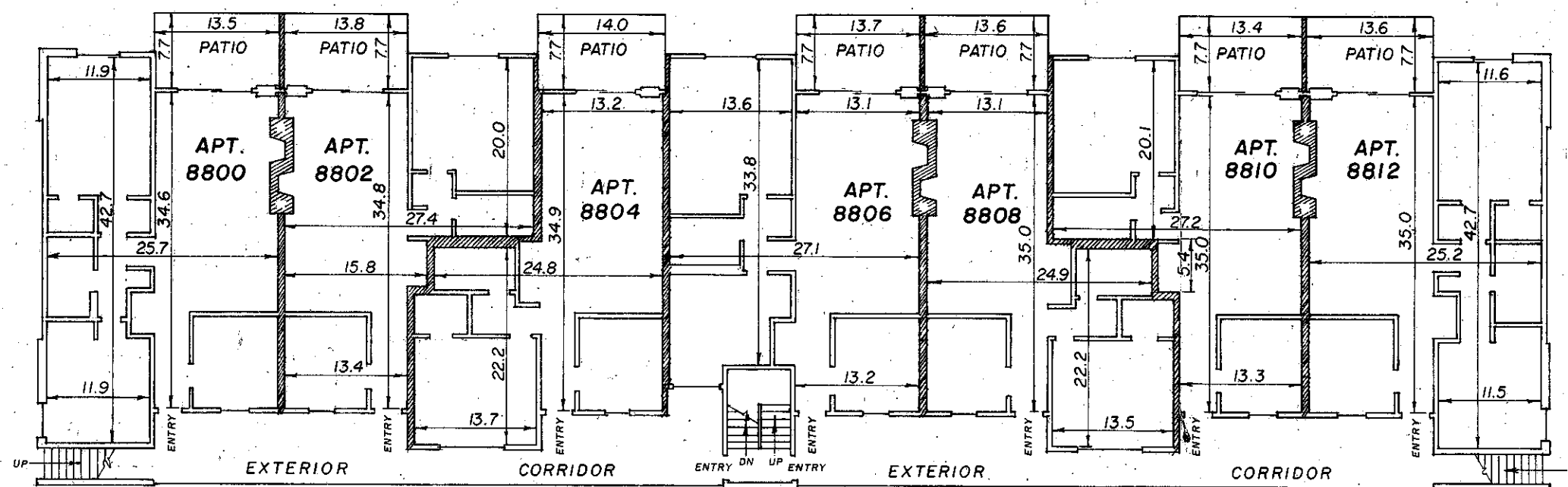
# APARTMENT OWNERSHIP NUMBER 106

## GALAXY V CONDOMINIUM



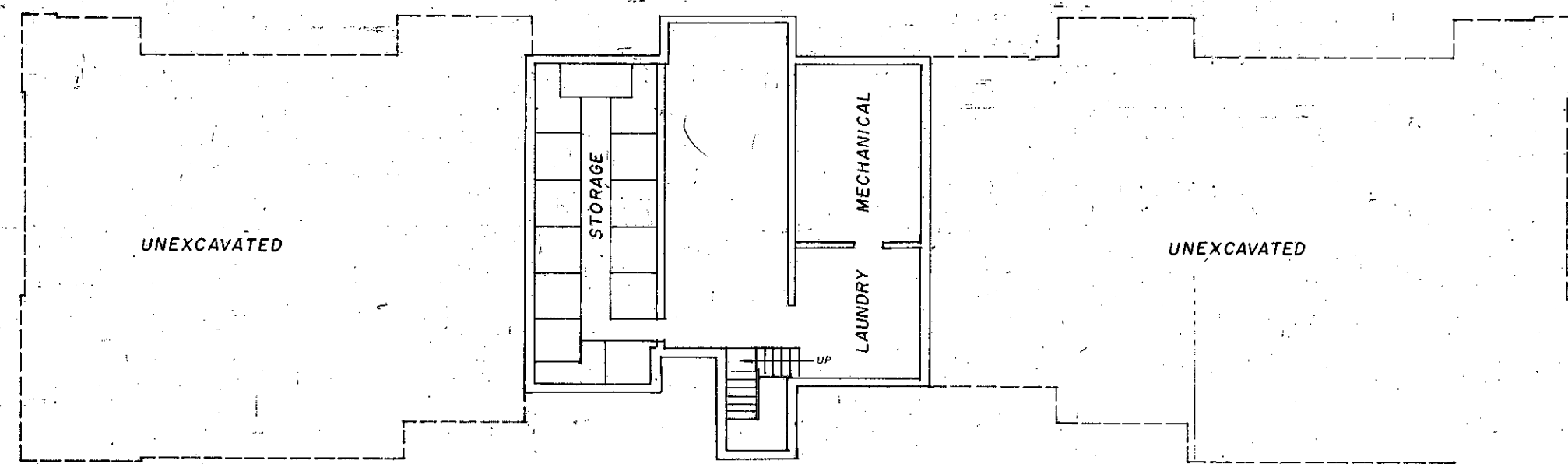
SECOND FLOOR

CEILING HEIGHT = 8.00 FEET AS TO ALL APARTMENTS EXCEPT VAULTED AREAS. SEE DETAIL

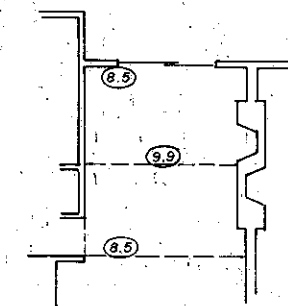


FIRST FLOOR

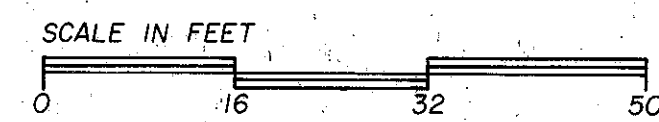
CEILING HEIGHT = 8.00 FEET AS TO ALL APARTMENTS



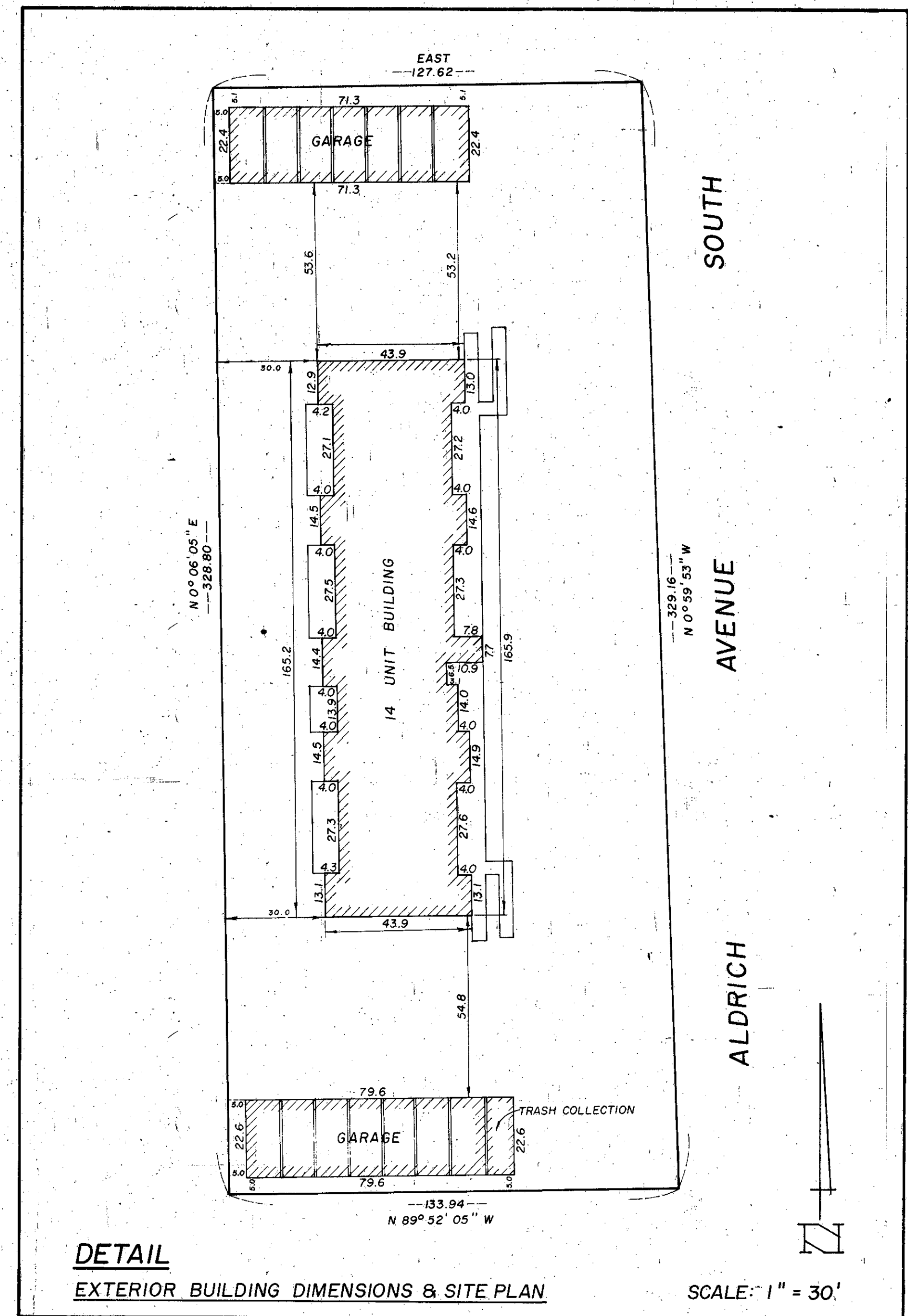
BASEMENT



DASHED LINE DENOTES AREA WHERE CEILING IS VAULTED.  
 (E) DENOTES CEILING HEIGHT



ALL DISTANCES SHOWN ARE IN FEET AND DECIMALS OF A FOOT.



THE UNDERSIGNED BEING FIRST DULY SWORN UNDER OATH CERTIFIES AND DEPOSES THAT THE WITHIN SET OF FLOOR PLANS OF GALAXY V CONDOMINIUM CONSISTING OF 1 PAGE REPRESENTS AN ACCURATE COPY OF PORTIONS OF THE BUILDING PLANS AS FILED WITH AND APPROVED BY THE CITY OF BLOOMINGTON AND FURTHER THAT THE SAME FULLY AND ACCURATELY DEPICTS THE LAYOUT, LOCATION, APARTMENT NUMBERS AND DIMENSIONS OF THE APARTMENTS AS-BUILT.

*Larry R. Couture*  
 LARRY R. COUTURE SURVEYOR MINNESOTA REG. NO. 9018

STATE OF MINNESOTA  
 COUNTY OF Hennepin SUBSCRIBED AND SWORN TO BEFORE ME A NOTARY PUBLIC THIS 10<sup>th</sup> DAY OF April 1978.

MY COMMISSION EXPIRES \_\_\_\_\_