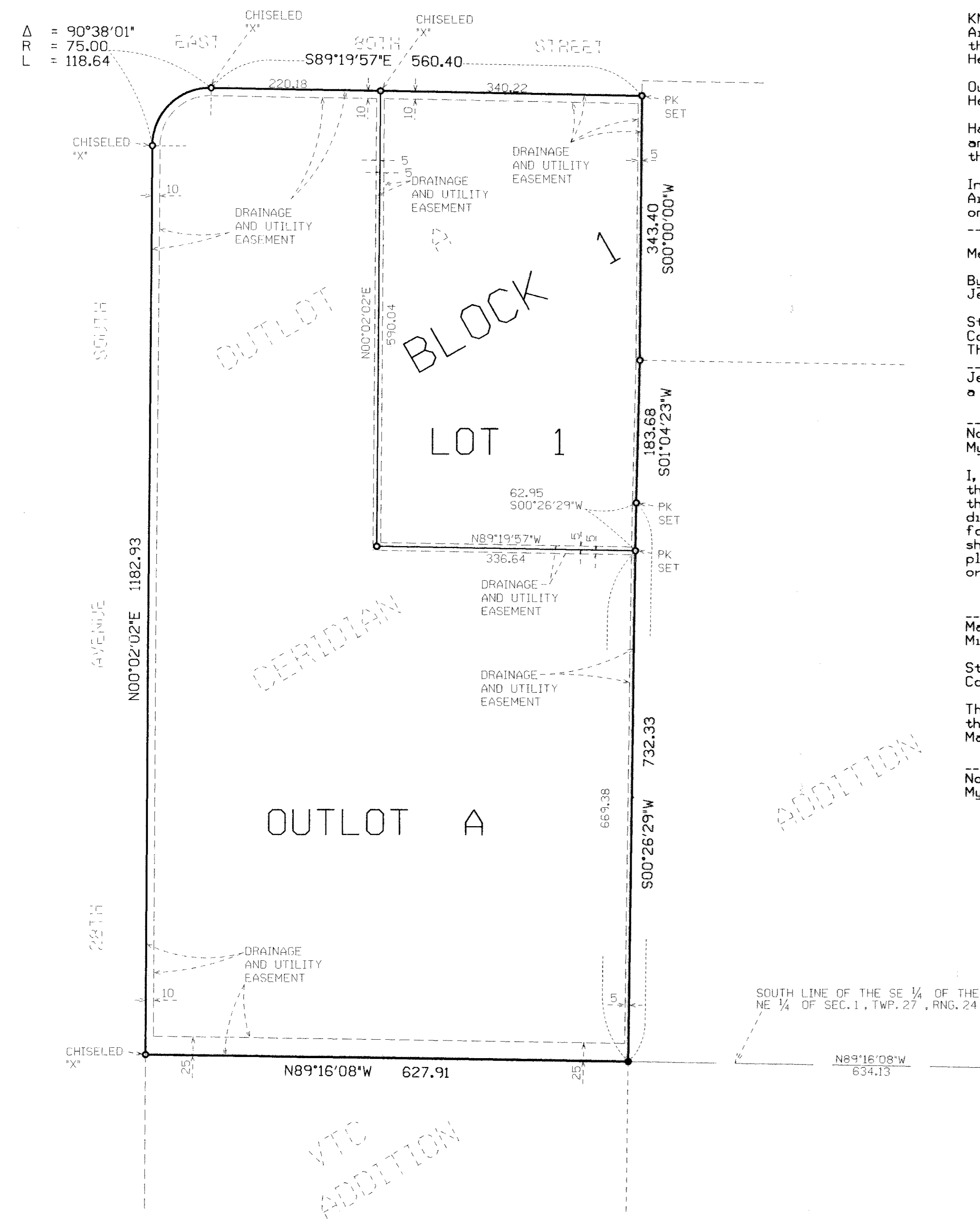


# CERIDIAN 2ND ADDITION



KNOW ALL PERSONS BY THESE PRESENTS: That Metropolitan Airports Commission, a Minnesota Public Corporation, fee owner of the following described property situated in the County of Hennepin, State of Minnesota, to wit:

Outlot A, CERIDIAN ADDITION, according to the recorded plat thereof, Hennepin County, Minnesota

Has caused the same to be surveyed and platted as CERIDIAN 2ND ADDITION and does hereby donate and dedicate to the public for public use forever the drainage and utility easements as shown on said plat.

In witness whereof, Jeffrey W. Hamiel, Executive Director of Metropolitan Airports Commission, a Minnesota Public Corporation, has here unto set his hand on behalf of the corporation this August day of 2000.

Metropolitan Airports Commission  
 By Jeffrey W. Hamiel  
 Jeffrey W. Hamiel, Executive Director

State of Minnesota  
 County of Hennepin  
 The foregoing instrument was acknowledged before me this 11 day of August, 2000 by Jeffrey W. Hamiel, Executive Director of Metropolitan Airports Commission a Minnesota Public Corporation, on behalf of the corporation.

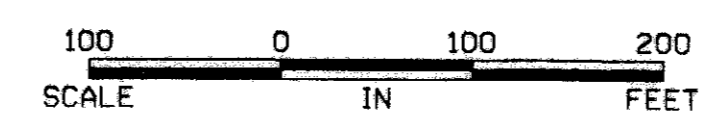
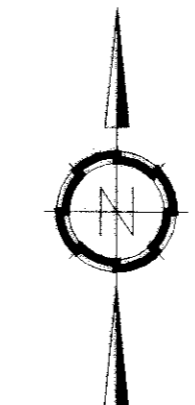
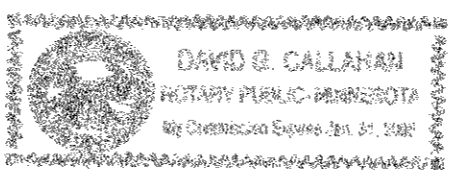
David H. Callahan  
 Notary Public, Hennepin County, Minnesota  
 My commission expires January 31, 2005

I, Marvin G. Lovlein, hereby certify that I have surveyed and platted the property described on this plat as CERIDIAN 2ND ADDITION; that this plat is a correct representation of the survey, that all distances are correctly shown on the plat in feet and hundredths of a foot, that all monuments have been correctly placed in the ground as shown; that the outside boundary lines are correctly designated on the plat; and that there are no wet lands as defined in MS 505.02, Subd. 1, or public highways to be designated on the plat.

Marvin G. Lovlein  
 Marvin G. Lovlein, Land Surveyor  
 Minnesota License Number 17259

State of Minnesota  
 County of Hennepin  
 The foregoing Surveyor's Certificate was acknowledged before me this 8th day of August, 2000 by Marvin G. Lovlein, Minnesota License No. 17259

David H. Callahan  
 Notary Public, Hennepin County, Minnesota  
 My commission expires January 31, 2005



BLOOMINGTON, MINNESOTA  
 This plat of CERIDIAN 2ND ADDITION was approved and accepted by the City Council of the City of Bloomington, Minnesota, at a regular meeting thereof held this \_\_\_\_\_ day of \_\_\_\_\_, 20\_\_\_\_. If applicable, the written comments and recommendations of the Commissioner of Transportation and the County Highway Engineer have been received by the city or the prescribed 30 day period has elapsed without receipt of such comments and recommendations, as provided by Minn. Statutes, Section 505.03, Subd. 2.  
 CITY COUNCIL OF THE CITY OF BLOOMINGTON, MINNESOTA

\_\_\_\_\_, Mayor \_\_\_\_\_, Manager

TAXPAYER SERVICES DEPARTMENT, Hennepin County, Minnesota  
 I hereby certify that taxes payable in 20\_\_\_\_ and prior years have been paid for land described on this plat. Dated this \_\_\_\_\_ day of \_\_\_\_\_, 20\_\_\_\_.

Patrick H. O'Connor, Hennepin County Auditor  
 By \_\_\_\_\_ Deputy

SURVEY DIVISION, Hennepin County, Minnesota  
 Pursuant to MINN. STAT. Sec. 383B.565 (1969) this plat has been approved this \_\_\_\_\_ day of \_\_\_\_\_, 20\_\_\_\_.

Gary F. Caswell, Hennepin County Surveyor  
 By \_\_\_\_\_

COUNTY RECORDER, Hennepin County, Minnesota  
 I hereby certify that the within plat of CERIDIAN 2ND ADDITION was filed for record in this office this \_\_\_\_\_ day of \_\_\_\_\_, 20\_\_\_\_, at \_\_\_\_\_ o'clock \_\_\_\_\_m.

Michael H. Cunniff, County Recorder  
 By \_\_\_\_\_ Deputy

BEARINGS SHOWN ARE BASED ON AN ASSUMED DATUM

- ⊙ DENOTES HENNEPIN COUNTY MONUMENT
- DENOTES IRON MONUMENT FOUND
- DENOTES SET IRON MONUMENT OR AS OTHERWISE INDICATED