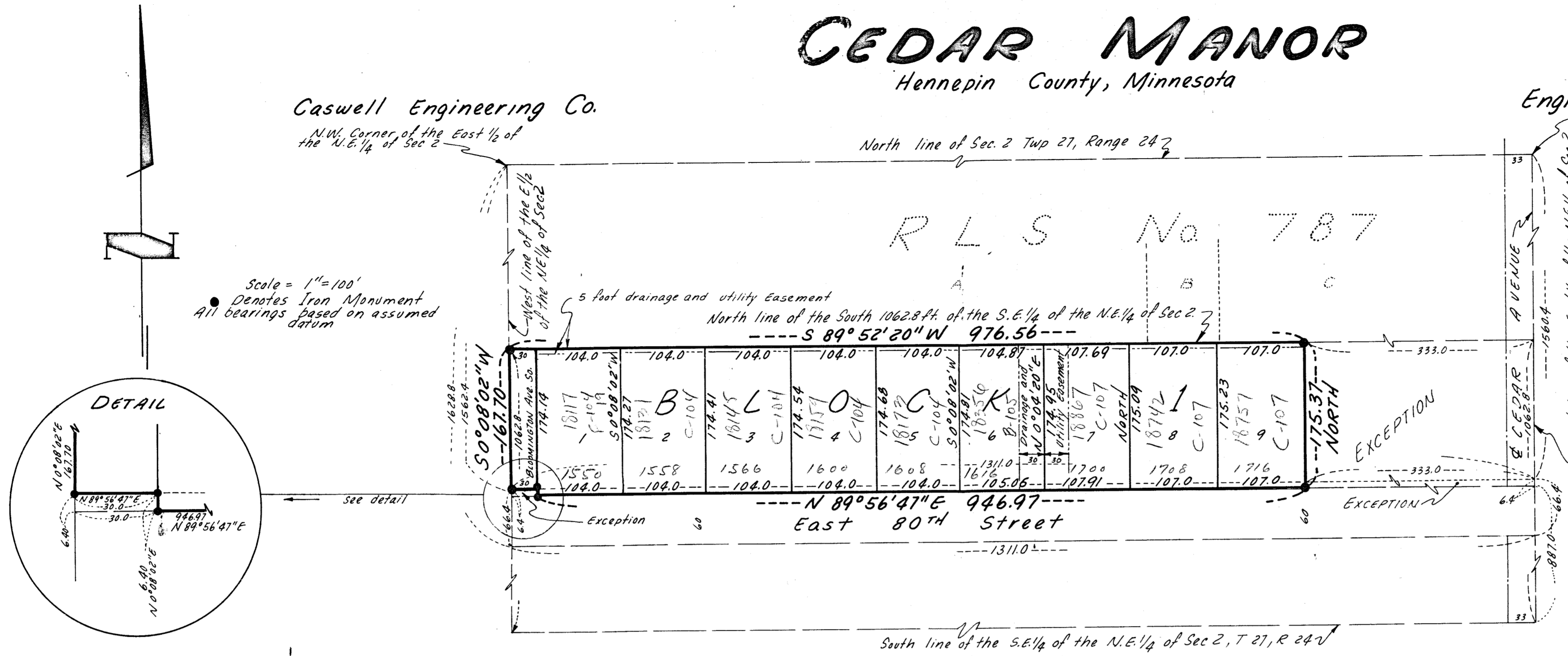


CEDAR MANOR

Hennepin County, Minnesota

Engineers and Land Surveyors

Caswell Engineering Co.



KNOW ALL MEN BY THESE PRESENTS: That National Funds Inc, a Minnesota Corporation, fee owner, and Northwestern State Bank, Osseo, Minnesota, a Minnesota Corporation, mortgagee of the following described property situated in the State of Minnesota, County of Hennepin, to wit:

That part of the East 1/2 of the Northeast 1/4 lying North of a line extending from a point on the East line thereof distant 1560.4 feet South along the said East line from the Northeast corner of the said East 1/2 of the Northeast 1/4, and lying South of the West line thereof distant 1562.4 feet South along the said West line from the Northwest corner of said East 1/2 of the Northeast 1/4, and lying South of the North line of the South 1062.8 feet of the Southeast 1/4 of the Northeast 1/4 of said Section 2, Township 27, Range 24, excepting the East 333 feet thereof, according to the Government Survey thereof, and that National Funds Auxiliary Corporation, a Minnesota Corporation, owner and proprietor of the following described property to wit:

The North 6.4 feet of all that part of the East 1/2 of the Northeast 1/4 of Section 2, Township 27 North, Range 24 West of the Fourth Principal Meridian, described as follows: Beginning at a point in the East line of Section 2 a distance of 1560.4 feet South of the Northeast corner thereof; thence South along the East line of Section 2 a distance of 66.4 feet; thence West 1311 feet to a point in the West line of the East 1/2 of the Northeast 1/4 of said Section 2, a distance of 1628.8 feet South of the North line of Section 2; thence North along the West line of the East 1/2 of the Northeast 1/4 of said Section 2, a distance of 66.4 feet; thence East 1311 feet more or less, to the point of beginning, except the West 30 feet thereof, and except the East 333 feet thereof.

Have caused the same to be surveyed and platted as CEDAR MANOR and do hereby donate and dedicate to the public for public use forever the Avenue, and utility and drainage easements as shown on the annexed plat.

In witness whereof, said National Funds Inc, a Minnesota Corporation, has caused these presents to be signed by its proper officers and its corporate seal to be hereunto affixed this 19th day of September, 1965, A.D.; and said National Funds Auxiliary Corporation, a Minnesota Corporation, has caused these presents to be signed by its proper officers and its corporate seal to be hereunto affixed this 19th day of September, 1965, A.D.; and said Northwestern State Bank, Osseo, Minnesota, a Minnesota Corporation, has caused these presents to be signed by its proper officers and its corporate seal to be hereunto affixed this 19th day of September, 1965, A.D.

State of Minnesota
County of Hennepin

On this 19th day of September, 1965, A.D. before me a notary public within and for said County, and State, personally appeared George J. Duchniak and William A. Laing, to me personally known, who each being duly sworn and say that they are respectively President and Assistant Cashier of Northwestern State Bank, Osseo, Minnesota, a Minnesota Corporation, the corporation named in the foregoing instrument; and that the seal affixed to the same instrument is the corporate seal of said corporation; that said instrument was signed and sealed in behalf of said corporation by the acknowledged said instrument directors; and said George J. Duchniak and William A. Laing to be the free act and deed of said corporation.

Notary Public, Hennepin County, Minnesota
My commission expires _____

I hereby certify that I have surveyed and platted the property described in this plat as CEDAR MANOR; that this plat is a correct representation of said survey; that all distances are correctly shown on the plat in feet and decimals of a foot; that the monuments for guidance of future surveys have been correctly placed in the ground as shown on the plat; that the outside boundary lines are correctly designated on the plat; and that there are no wetlands or public highways to be designated on said plat other than as shown thereon.

Keith P. Caswell
Registered Land Surveyor
Minnesota Registration No. 3959

state of Minnesota
County of Hennepin

The above certificate was subscribed and sworn to, before me, this 7th day of September, 1965, A.D.

Myron E. Sandberg
Notary Public, Hennepin County, Minnesota
My commission expires _____

This plat was approved and accepted by the City Council of Bloomington, Minnesota, at a regular meeting thereof held this _____ day of _____, 19____, A.D.

City Council of Bloomington, Minnesota
by _____ its Mayor
by _____ its Clerk

The boundaries of this plat and the boundaries of the block therein have been mathematically checked and approved. No determination has been made to ascertain that the legal description agrees with said plat. Dated this _____ day of _____, 19____, A.D.

by Elmer J. Peterson
Hennepin County Surveyor

IN PRESENCE OF _____ and _____
_____ and _____
_____ and _____
_____ and _____

SIGNED
National Funds, Inc.

Vice President

Assistant Secretary
National Funds Auxiliary Corporation

Vice President

Assistant Secretary
Northwestern State Bank

President

Assistant Cashier

state of Minnesota
County of Hennepin

On this _____ day of _____, 19____, A.D. before me, a notary public within and for said County and State, personally appeared Claude E. Campion and Eleanor E. Gag, to me personally known, who each being duly sworn did say that they are respectively Vice President and Assistant Secretary of National Funds Inc, a Minnesota Corporation, and also National Funds Auxiliary Corporation, a Minnesota Corporation, the corporations named in the foregoing instrument; and that the seals affixed to the same instrument are the corporate seals of said corporations; that said instrument was signed and sealed in behalf of said corporations by the authority of their Boards of Directors; and said Claude E. Campion and Eleanor E. Gag acknowledged said instrument to be the free act and deed of said corporations.

Notary Public, Hennepin County, Minnesota
My commission expires _____