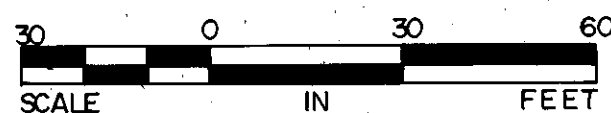
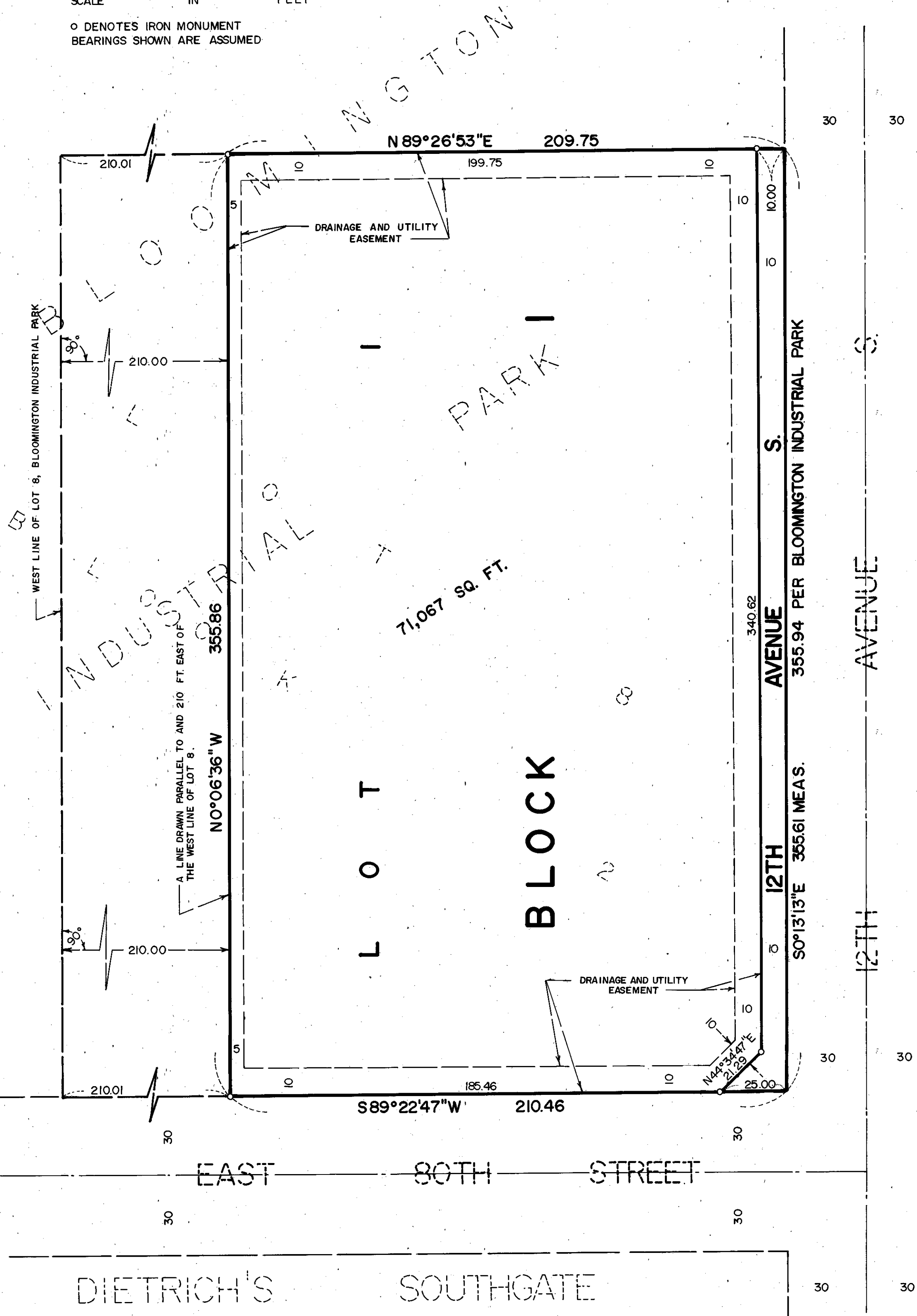


# BLOOMINGTON INDUSTRIAL PARK 2 ND ADDITION

C. R. DOC. NO. \_\_\_\_\_



○ DENOTES IRON MONUMENT  
BEARINGS SHOWN ARE ASSUMED



KNOW ALL MEN BY THESE PRESENTS: That ROYCE REAL ESTATE COMPANY, a Minnesota Corporation, owner and proprietor of the following described property situated in the County of Hennepin, State of Minnesota to wit:

That part of Lot 8, Block 2, Bloomington Industrial Park lying East of the following described line: A line drawn parallel to and 210 feet East of, measured at right angles to the West line of said Lot 8, all according to the plat thereof on file and of record in the office of the County Recorder in and for Hennepin County, Minnesota.

Has caused the same to be surveyed and platted as BLOOMINGTON INDUSTRIAL PARK 2ND ADDITION and does hereby donate and dedicate to the public, for public use forever the avenue and drainage and utility easements as shown on said plat.

In witness whereof said ROYCE REAL ESTATE COMPANY, a Minnesota Corporation, has caused these presents to be signed by its proper officers this 4TH day of October 19 79.

SIGNED: Garry Royce its President ROYCE REAL ESTATE COMPANY  
Jeffrey Royce its Vice-President  
 STATE OF MINNESOTA  
 COUNTY OF Hennepin

The foregoing instrument was acknowledged before me this 4TH day of October 19 79 by Garry Royce its President and Jeffrey Royce its Vice-President of said ROYCE REAL ESTATE COMPANY, a Minnesota Corporation, on behalf of said corporation.

JOHN K. BARNES  
 NOTARY PUBLIC - MINNESOTA  
 HENNEPIN COUNTY  
 My commission expires Sept. 18, 1985

John K. Barnes  
 Notary Public, Hennepin County, Minnesota  
 My Commission Expires Sept. 18, 1985

I hereby certify that I have surveyed and platted the property described on this plat as BLOOMINGTON INDUSTRIAL PARK 2ND ADDITION: that this plat is a correct representation of said survey; that all distances are correctly shown on said plat in feet and hundredths of a foot; that all monuments have been correctly placed in the ground as shown on said plat; that the outside boundary lines are correctly designated on said plat; and that there are no wetlands to be designated on said plat.

Edward H. Sunde  
 Edward H. Sunde, Land Surveyor  
 Minnesota Registration No. 8612

STATE OF MINNESOTA  
 COUNTY OF Hennepin

The foregoing instrument was acknowledged before me this 31ST day of August 19 79 by Edward H. Sunde, Land Surveyor.

JOHN K. BARNES  
 NOTARY PUBLIC - MINNESOTA  
 HENNEPIN COUNTY  
 My commission expires Sept. 18, 1985

John K. Barnes  
 Notary Public, Hennepin County, Minnesota  
 My Commission Expires Sept. 18, 1985

BLOOMINGTON, MINNESOTA

The plat of BLOOMINGTON INDUSTRIAL PARK 2ND ADDITION was approved and accepted by the City Council of the City of Bloomington, Minnesota, at a regular meeting thereof, held this \_\_\_\_\_ day of \_\_\_\_\_ 19 \_\_\_\_.

CITY COUNCIL OF BLOOMINGTON, MINNESOTA

BY: \_\_\_\_\_ its Mayor BY: \_\_\_\_\_ its Manager

FINANCE DIVISION, Hennepin County, Minnesota

I hereby certify that there are no delinquent taxes for all years prior to 19 \_\_\_\_ for land described on this plat. Dated this \_\_\_\_ day of 19 \_\_\_\_.

Vernon T. Hoppe, Director BY: \_\_\_\_\_ Tax Clerk

SURVEY DIVISION, Hennepin County, Minnesota

Pursuant to Chapter 810, Minnesota Laws of 1969, this plat has been approved this \_\_\_\_ day of \_\_\_\_\_ 19 \_\_\_\_.

Alver R. Freeman, Hennepin County Surveyor BY: \_\_\_\_\_

COUNTY RECORDER, Hennepin County, Minnesota

I hereby certify that the within plat of BLOOMINGTON INDUSTRIAL PARK 2ND ADDITION was filed for record in this office this \_\_\_\_ day of 19 \_\_\_\_, at \_\_\_\_ o'clock \_\_\_\_ M.

WAYNE A JOHNSON, County Recorder BY: \_\_\_\_\_ Deputy