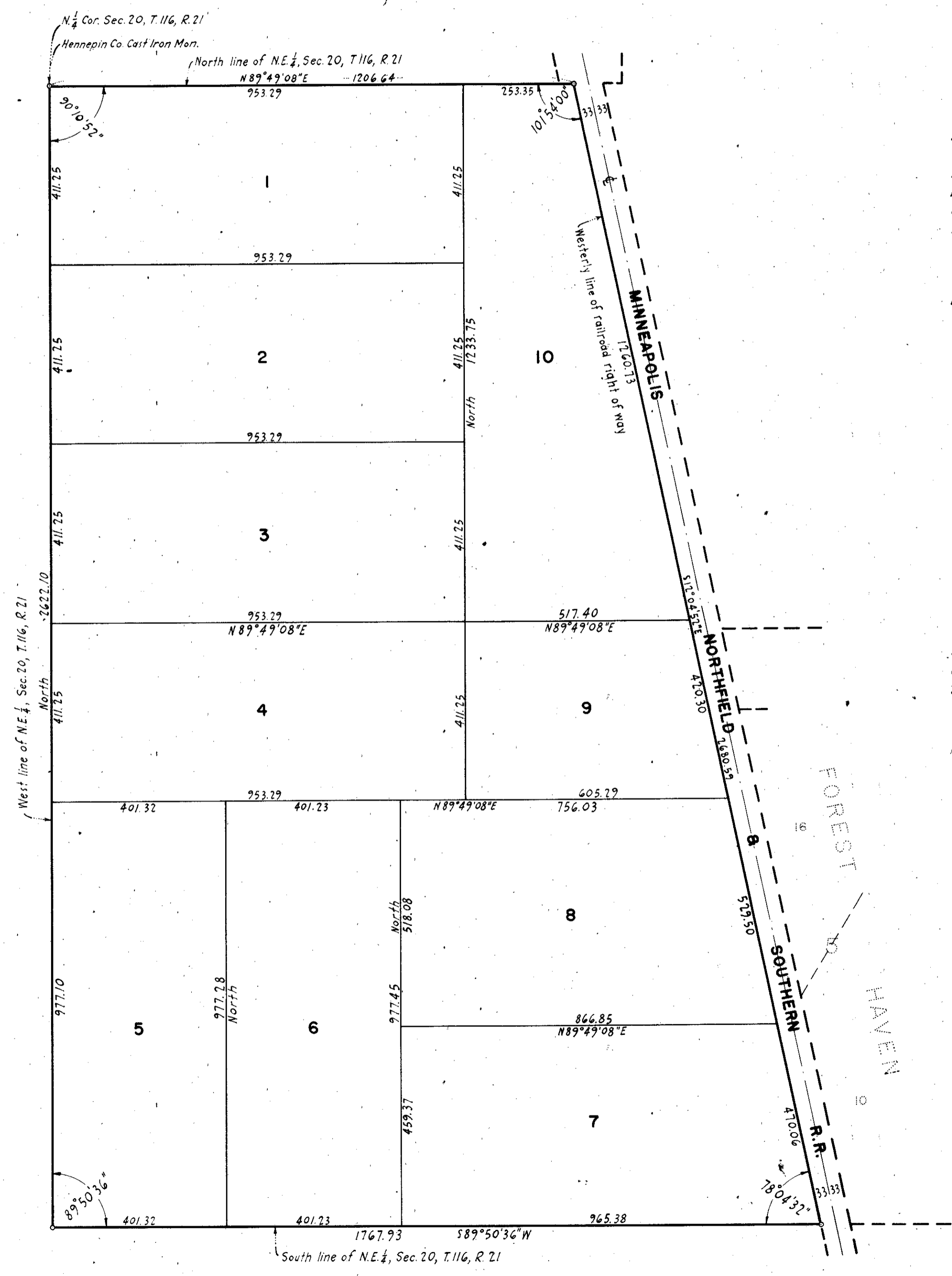
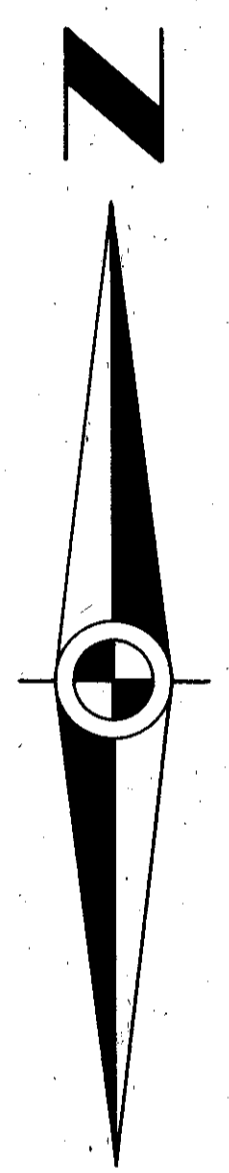


AUDITOR'S SUBDIVISION NUMBER 382

HENNEPIN COUNTY, MINNESOTA

SCALE: 1 IN. = 200 FT.
BEARINGS SHOWN ARE ASSUMED
◦ DENOTES IRON MONUMENT

HOWARD W. PERKINS
COUNTY SURVEYOR
HENNEPIN COUNTY, MINN.



I hereby certify that in accordance with Laws of 1947, Chapter 494 of the State of Minnesota; and by order of the County Auditor of Hennepin County, Minnesota, I have surveyed and platted the following described land to wit:
That part of the Northeast Quarter (N.E. 1/4) of Section Twenty (20), Township One Hundred Sixteen (116), Range Twenty-One (21) lying West of the Minneapolis Northfield and Southern Railroad; said platting to be known as AUDITOR'S SUBDIVISION NUMBER 382, HENNEPIN COUNTY, MINNESOTA; that this plat is a correct representation of said survey; that all distances are correctly shown on the plat in feet and decimals of a foot; that the monuments for the guidance of future surveys have been correctly placed in the ground as shown on the plat; and that the outside boundary lines are correctly designated on the plat.

Minneapolis, Minnesota _____ A.D. 1960.

County Surveyor, Hennepin County, Minnesota

I, Robert F. Fitzsimmons, County Auditor of Hennepin County, Minnesota, hereby certify that I have notified the owners of the land described in the foregoing County Surveyors Certificate to plat the same and a reasonable time having elapsed since serving of said notice and said owners of said land having failed to comply with said notice and request, I have caused the same to be platted in accordance with the plat on this sheet and the same to be known as AUDITOR'S SUBDIVISION NUMBER 382, HENNEPIN COUNTY, MINNESOTA.

Dated _____ A.D. 1960.

County Auditor, Hennepin County, Minnesota