

3054

1527338

AUDITOR'S SUBDIVISION NUMBER 205

HENNEPIN COUNTY MINNESOTA

SCALE: 1 INCH = 300 FEET.

Compiled and Drawn by
Abbott & Hankins
Civil Engineers
323 Palace Bldg.
Minneapolis Minnesota

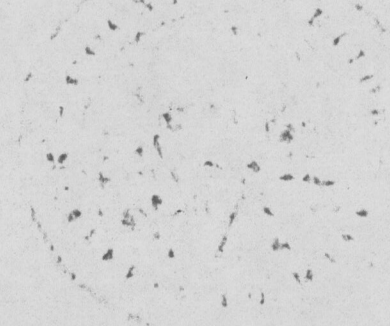
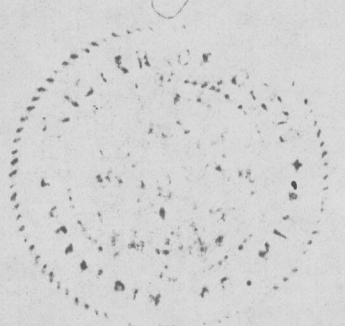
B-2.50 27338

I hereby certify that in accordance with Section 2219-Chapter 11, General Statutes of 1925, and in accordance with the order of the County Auditor of Hennepin County, Minnesota, I have plotted the following described land in the County of Hennepin, and State of Minnesota; To Wit: The W. 1/2 of Sec. 12; Govt. lot 5, and the accretion to said lot N. of the County Road, in Sec. 13; and the N.E. 1/4 of the S.E. 1/4, and Govt. lots 2 & 3, in Sec. 11, all in Township 27, Range 24, excepting from the above lots 1 to 5 inclusive in Riverview Acres, according to the recorded plat thereof; that the plat on this sheet is a correct delineation of said platting, and to be known as Auditor's Subdivision Number 205, and that all distances are shown in feet and decimals of a foot

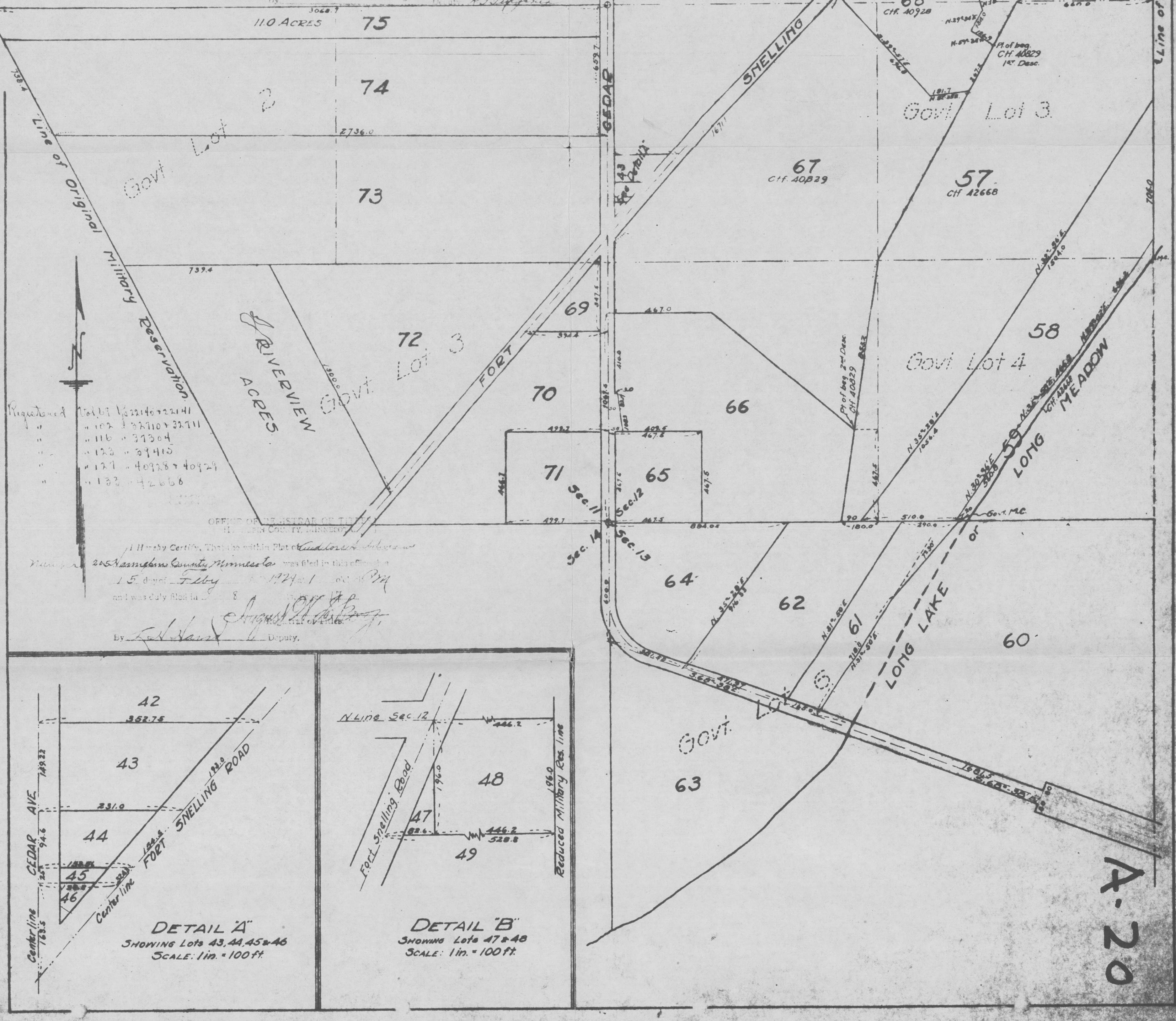
DATED Dec 1 - 1928
Wm. W. Perkins
COUNTY SURVEYOR
HENNEPIN COUNTY, MINN.

I, Al. P. Erickson, County Auditor of Hennepin County, Minnesota, hereby certify that I have notified the owners of the land described in the foregoing County Surveyor's certificate, to plot the same, and a reasonable time having elapsed since the service of said notice, and said owners of said land having failed to comply with said notice and request, I have caused same to be plotted in accordance with the plat on this sheet, and same to be known as Auditor's Subdivision Number 205, Hennepin County, Minnesota.

DATED January 21st 1929
Al. P. Erickson
COUNTY AUDITOR,
HENNEPIN COUNTY, MINN.



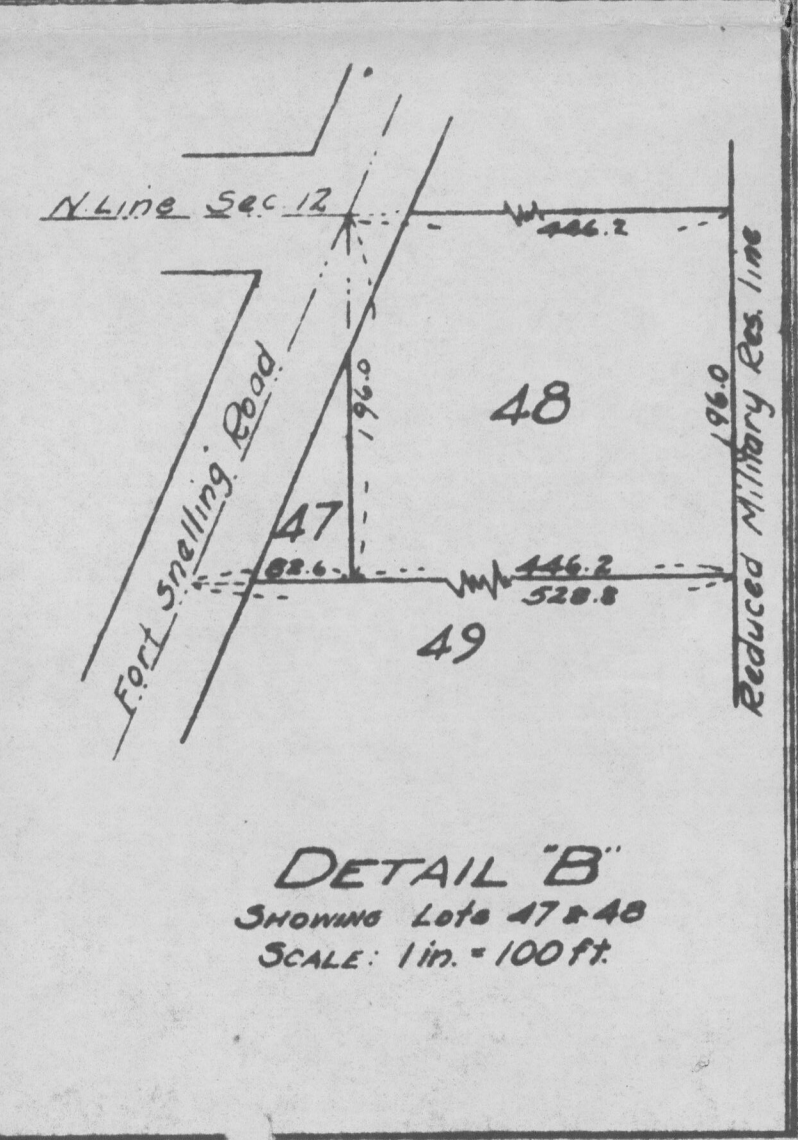
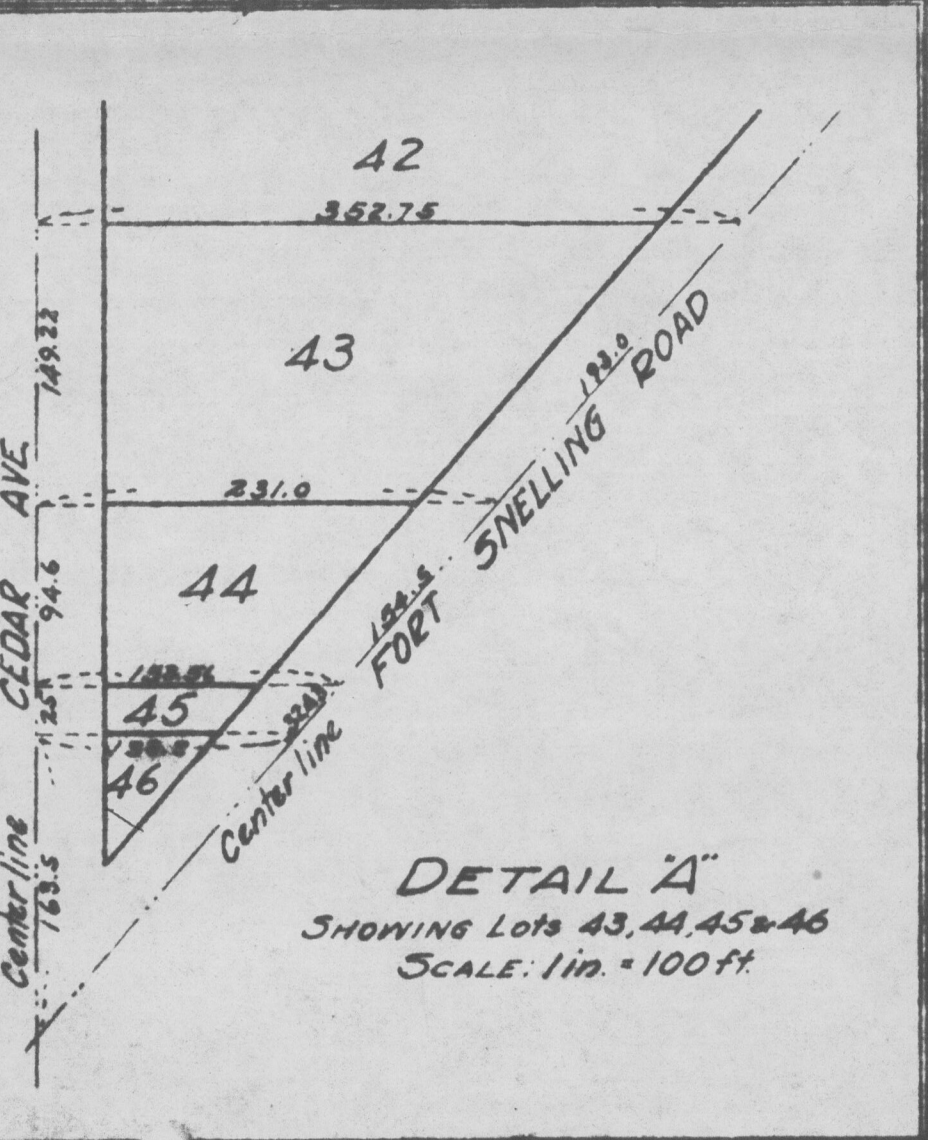
I hereby certify that the above Plat of Auditor's Subdivision Number 205, Hennepin County, Minnesota, was filed in this office on 14th day of February A.D. 1929 and is a correct and true copy of the original Plat on file in this office.



Requested

107	32711
108	32711
116	31304
123	31415
127	40388
132	42668

I hereby certify that the above Plat of Auditor's Subdivision Number 205, Hennepin County, Minnesota, was filed in this office on 15th day of Feb A.D. 1929 and is a correct and true copy of the original Plat on file in this office.



A-20