

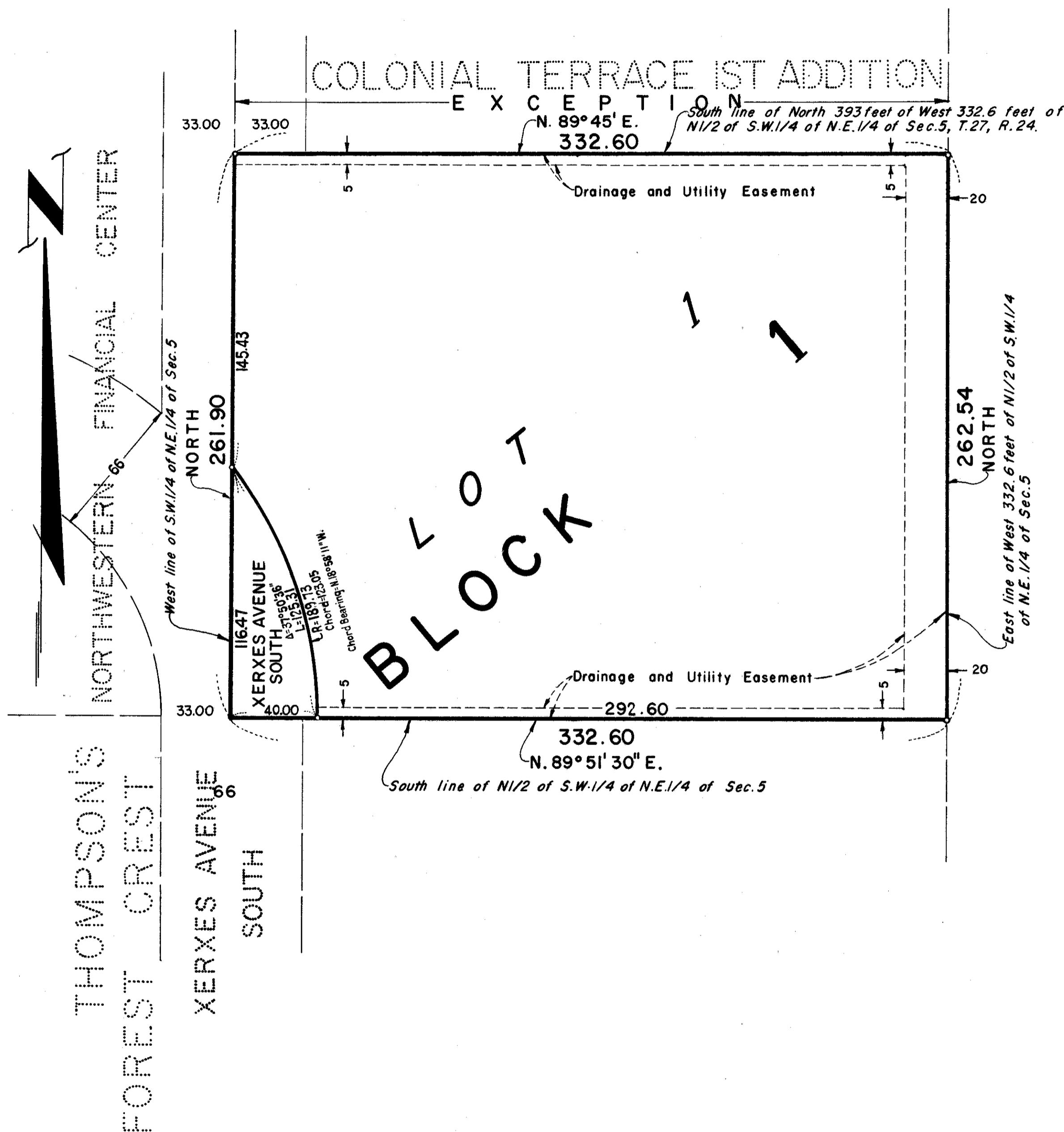
ALDEN'S ADDITION

BEARINGS SHOWN ARE ASSUMED AUGUST, 1970

EGAN, FIELD & NOWAK

○ DENOTES IRON MONUMENT SCALE: 1 INCH EQUALS 40 FEET

SURVEYORS



R o b y n G i l e n

Know all men by these presents that 8045 Xerxes Corporation, a Minnesota corporation, owner and proprietor of the following described property situated in the State of Minnesota and County of Hennepin, to wit: The West 332.6 feet of the North 1/2 of the Southwest 1/4 of the Northeast 1/4, except the North 393 feet thereof, Section 5, Township 27, Range 24, has caused the same to be surveyed and platted as ALDEN'S ADDITION and do hereby donate and dedicate to the public for public use forever the avenue and easements for drainage and utility purposes as shown on the plat. In witness whereof said 8045 Xerxes Corporation has caused these presents to be signed by its proper officers and its corporate seal to be hereunto affixed this 17 day of February A. D. 1971.

In presence of:

Nancy Buchrens As to Allan E. Levin by Allan E. Levin president
Nancy Buchrens and William S. Reiling by William S. Reiling secretary
 8045 XERXES CORPORATION
 William S. Reiling

STATE OF MINNESOTA)
 COUNTY OF HENNEPIN) S.S. On this 17 day of February A.D. 1971, before me, a Notary Public, personally appeared Allan E. Levin and William S. Reiling to me personally known who by me each duly sworn did say that they are respectively president and secretary of 8045 Xerxes Corporation, the corporation named in the foregoing instrument, that the corporate seal affixed to said instrument is the corporate seal of said corporation, and that said instrument was signed and sealed in behalf of said corporation by authority of its Board of Directors and said Allan E. Levin and William S. Reiling acknowledged said instrument to be the free act and deed of said corporation.

James W. Nelson
 Notary Public, Hennepin County, Minnesota
 My commission expires June 30, 1975

I hereby certify that I have surveyed and platted the property described on this plat as ALDEN'S ADDITION; that this plat is a correct representation of said survey; that all distances are correctly shown on the plat in feet and decimals of a foot; that all monuments have been correctly placed in the ground as shown; that the outside boundary lines are correctly designated on the plat and that there are no wet lands to be designated on said plat.

Vernon A. Nichols
 Surveyor - Minnesota Registration No. 9053

STATE OF MINNESOTA)
 COUNTY OF HENNEPIN) S.S. The surveyor's certificate was subscribed and sworn to before me, a Notary Public, this 17th day of February A.D. 1971.

Chris Kuntz
 Chris Kuntz
 Notary Public, Hennepin County, Minnesota
 My commission expires March 4, 1975.

The foregoing plat of ALDEN'S ADDITION was approved and accepted by the City Council of Bloomington, Minnesota at a regular meeting thereof held this _____ day of _____ A. D. 1971.

CITY COUNCIL OF BLOOMINGTON, MINNESOTA

by _____ Mayor

by _____ Manager

The boundaries of this plat and the boundaries of the block therein have been mathematically checked and approved. No determination has been made to ascertain that the legal description agree with said plat.
 Dated this _____ day of _____ A.D. 1971.

by _____
 Elmer J. Peterson - Hennepin County Surveyor