

# A T AND T ADDITION

R.T. DOC. NO. \_\_\_\_\_

**KNOW ALL MEN BY THESE PRESENTS:** That AT&T Communications of the Midwest, Inc. an Iowa corporation, fee owner of the following described property situated in the County of Hennepin, State of Minnesota, to wit:

Lots 4, 5, and that part of Lot 6 lying east of the West 18.53 feet thereof, "HALSEY LANE ADDITION", according to the record plat thereof.  
And S & T Lawn Service of Bloomington, Inc., a Minnesota corporation, fee owner of the following described property situated in the County of Hennepin, State of Minnesota, to wit:

Lot 7 and the West 18.53 feet of Lot 6, "HALSEY LANE ADDITION", according to the record plat thereof.  
Have caused the same to be surveyed and platted as A T AND T ADDITION and do hereby donate and dedicate to the public for public use forever the Lane and Avenue and the easements for drainage and utility purposes as shown on this plat.

In witness whereof said AT&T Communications of the Midwest, Inc. an Iowa corporation, has caused these presents to be signed by its proper officer this 22nd day of May, 2000.

In witness whereof said S & T Lawn Service of Bloomington, Inc., a Minnesota corporation, has caused these presents to be signed by its proper officer this 26th day of May, 2000.

SIGNED: AT&T COMMUNICATIONS OF THE MIDWEST, INC.

S & T LAWN SERVICE OF BLOOMINGTON, INC.

*Virginia N. Doss*  
Its Vice President, Block Real Estate

*Stan Goedert*  
Its Vice-President

STATE OF Georgia  
COUNTY OF Sulton

The foregoing instrument was acknowledged before me this 22nd day of May, 2000 by Virginia N. Doss the Block manager of AT&T Communications of the Midwest, Inc. an Iowa corporation on behalf of the corporation

*Yvonne L. Paulsen*  
Notary Public, Sulton County, Georgia  
My Commission Expires 7-8-02

STATE OF MINNESOTA  
COUNTY OF HENNEPIN

The foregoing instrument was acknowledged before me this 26th day of May, 2000 by Stan Goedert the Vice-President of S & T Lawn Service of Bloomington, Inc., a Minnesota corporation on behalf of the corporation.

**ROMELLE F. HEDLUND**  
NOTARY PUBLIC - MINNESOTA  
My Commission Expires Jan 31, 2005

*Romelle F. Hedlund*  
Notary Public, Dakota County, Minnesota  
My Commission Expires 1-31-05

I hereby certify that I have surveyed and platted the property described on this plat as A T AND T ADDITION; that this plat is a correct representation of said survey; that all distances are correctly shown in feet and hundredths of a foot; that all monuments have been correctly placed in the ground as shown on said plat; that the outside boundary lines are correctly designated on said plat; and that there are no wetlands as defined in MS 505.02, Subd. 1, to be designated on said plat.

*Jeffrey D. Lindgren*  
Jeffrey D. Lindgren, Land Surveyor  
Minnesota License Number 14376

STATE OF MINNESOTA  
COUNTY OF DAKOTA

The foregoing surveyor's certificate was acknowledged before me this 19th day of MAY, 2000 by Jeffrey D. Lindgren, Land Surveyor.

**ROMELLE F. HEDLUND**  
NOTARY PUBLIC - MINNESOTA  
My Commission Expires Jan 31, 2005

*Romelle F. Hedlund*  
Notary Public, Dakota County, Minnesota  
My Commission Expires 1-31-05

BLOOMINGTON, MINNESOTA

This plat of A T AND T ADDITION was approved and accepted by the City Council of Bloomington, Minnesota at a regular meeting thereof held on this \_\_\_\_\_ day of \_\_\_\_\_. If applicable, the written comments and recommendations of the Commissioner of Transportation and the County Highway Engineer have been received by the city or the prescribed 30 day period has elapsed without receipt of such comments and recommendations, as provided by Minnesota Statutes, Section 505.03, Subdivision 2.

CITY COUNCIL OF BLOOMINGTON, MINNESOTA

By: \_\_\_\_\_ Mayor

By: \_\_\_\_\_ Manager

TAXPAYER SERVICES DEPARTMENT, HENNEPIN COUNTY, MINNESOTA

I hereby certify that taxes payable in \_\_\_\_\_ and prior years have been paid in full for all land described on this plat.

Dated this \_\_\_\_\_ day of \_\_\_\_\_.

Patrick H. O'Connor, Hennepin County Auditor

By: \_\_\_\_\_ Deputy

SURVEY DIVISION, HENNEPIN COUNTY, MINNESOTA

Pursuant to Minnesota Statutes, Sec. 383B.565 (1969), this plat has been approved this \_\_\_\_\_ day of \_\_\_\_\_.

Gary F. Caswell, Hennepin County Surveyor

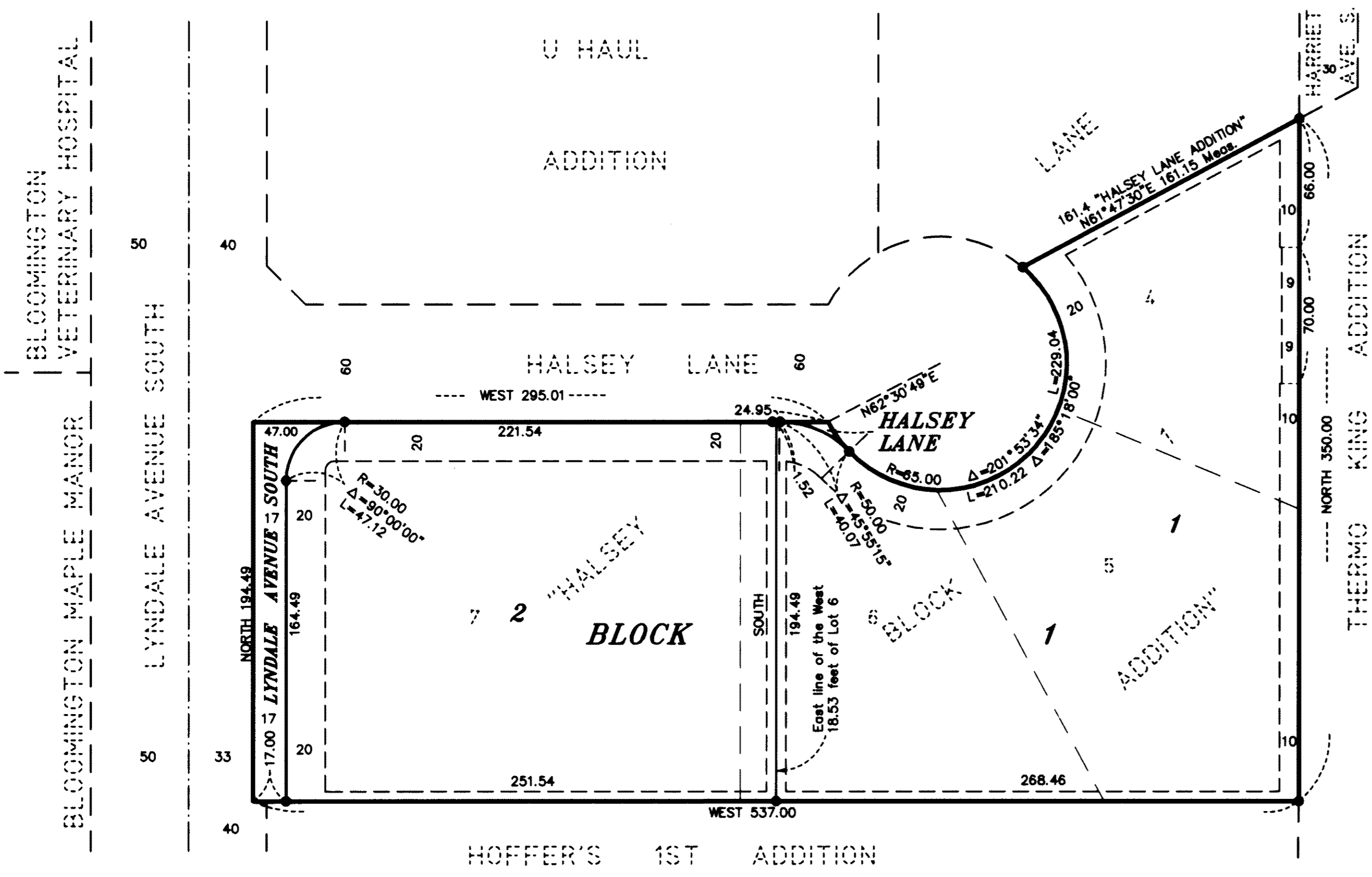
By: \_\_\_\_\_

REGISTRAR OF TITLES, HENNEPIN COUNTY, MINNESOTA

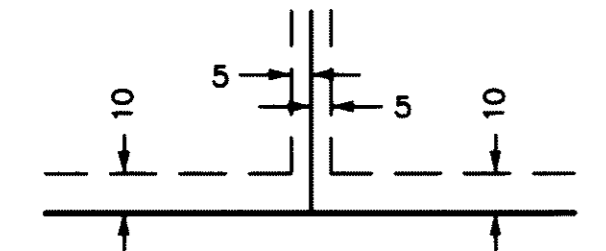
I hereby certify that the within plat of A T AND T ADDITION was filed for record in this office this \_\_\_\_\_ day of \_\_\_\_\_, \_\_\_\_\_ at \_\_\_\_\_ o'clock \_\_\_\_\_ M.

Michael H. Cunniff, Registrar of Titles

By: \_\_\_\_\_ Deputy



Drainage and Utility Easements are shown thus:



Being 5 feet in width and adjoining lot lines, and 10 feet in width and adjoining Right of Way lines as shown on the plat.

Bearings shown are assumed.

● Denotes iron Monument.

