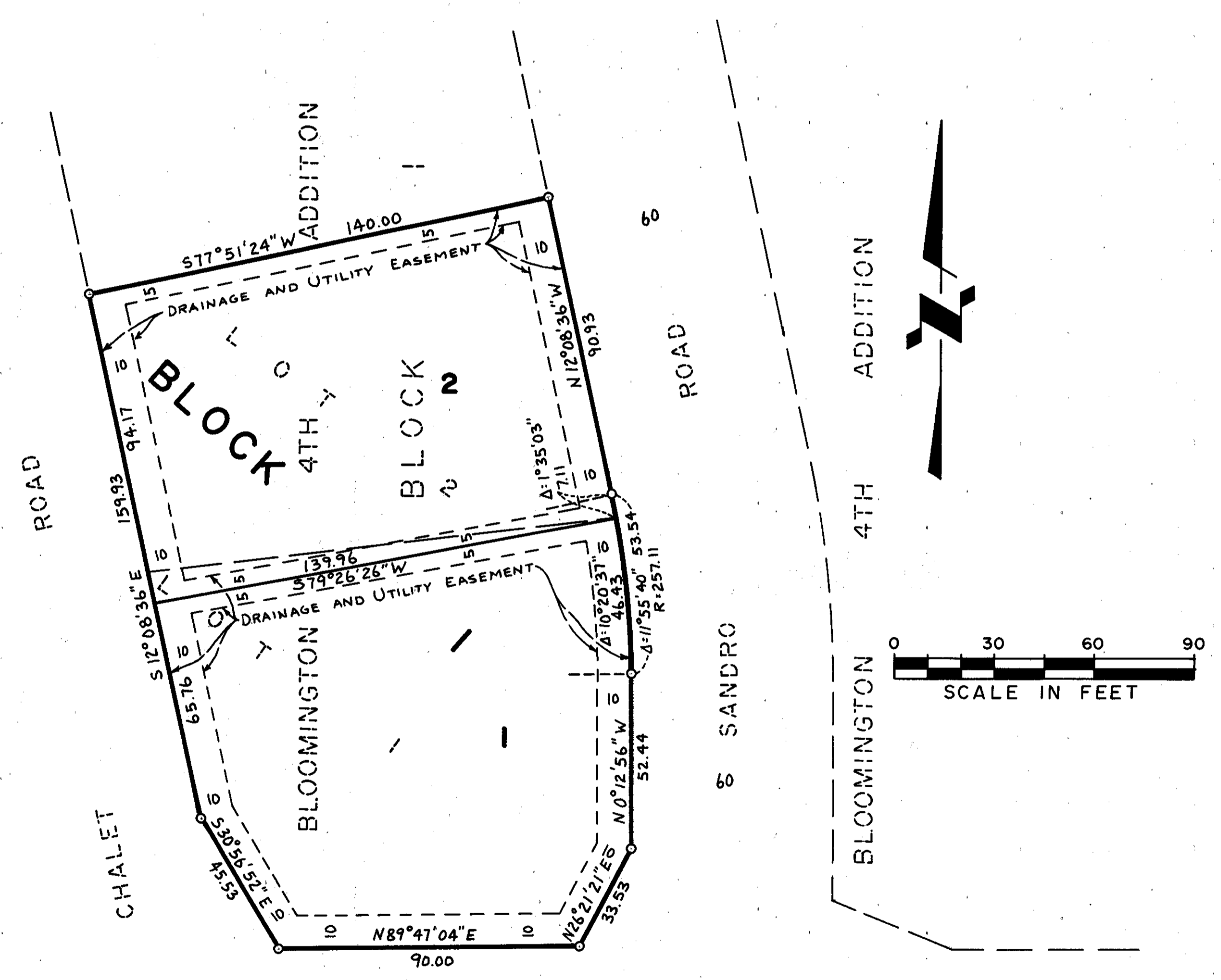


# WADE AND WILSON ADDITION

○ DENOTES IRON MONUMENT  
ALL BEARINGS SHOWN ARE ASSUMED



KNOW ALL MEN BY THESE PRESENTS: That Laukka and Associates Inc., a Minnesota Corporation, fee owner and Robert Waade and Associates Inc., a Minnesota Corporation, contract for deed purchaser, and Metram Properties Company, a Minnesota Corporation, mortgagee of the following described property situated in the County of Hennepin, State of Minnesota, to wit:

Lot 1, Block 1, Bloomington 4th Addition, according to the plat thereof on file or of record in the office of the Registrar of Titles.

And Laukka and Associates Inc., a Minnesota Corporation, fee owner and Waade and Wilson Inc., a Minnesota Corporation, contract for deed purchaser, and Metram Properties Company, a Minnesota Corporation, mortgagee of the following described property situated in the County of Hennepin, State of Minnesota, to wit:

Lot 2, Block 1, Bloomington 4th Addition, according to the plat thereof on file or of record in the office of the Registrar of Titles.

Have caused the same to be surveyed and platted as WADE AND WILSON ADDITION and do hereby donate and dedicate to the public for public use forever the easements for drainage and utility purposes as shown on this plat. In witness whereof said Laukka and Associates Inc., has caused these presents to be signed by its proper officer and its Corporate Seal to be hereunto affixed this 17th day of July 1979 and Robert Waade and Associates Inc. has caused these presents to be signed by its proper officer this      day of      19     and Waade and Wilson Inc. has caused these presents to be signed by its proper officers this      day of      19     and Metram Properties Company has caused these presents to be signed by its proper officer and its Corporate Seal to be hereunto affixed this      day of      19    .

SIGNED

LAUKKA AND ASSOCIATES, INC.  
Lawrence A. Laukka

WADE AND WILSON, INC.  
Robert L. Waade President  
Robert L. Waade

ROBERT WADE AND ASSOCIATES  
Robert L. Waade President  
Robert L. Waade

Jay W. Wilson Vice-President  
Jay W. Wilson

METRAM PROPERTIES COMPANY  
J. Klugger

State of Minnesota  
County of Hennepin  
The foregoing instrument was acknowledged before me this 17th day of July 1979 by Lawrence A. Laukka President of Laukka and Associates Inc., a Minnesota Corporation, on behalf of said Corporation.

Constance A. Comfort  
Notary Public, Hennepin County, Minnesota  
My Commission Expires Nov. 15, 1985

State of Minnesota  
County of Hennepin  
The foregoing instrument was acknowledged before me this 17th day of July 1979 by Robert L. Waade, president of Robert Waade and Associates, Inc., a Minnesota Corporation, on behalf of said Corporation.

Diane L. Johnson  
Notary Public, Hennepin County, Minnesota  
My Commission Expires June 10, 1983

State of Minnesota  
County of Hennepin  
The foregoing instrument was acknowledged before me this 17th day of July 1979 by Robert L. Waade, president and Jay W. Wilson, vice-president of Waade and Wilson Inc. a Minnesota Corporation, on behalf of said Corporation.

Diane L. Johnson  
Notary Public, Hennepin County, Minnesota  
My Commission Expires June 10, 1983

State of Minnesota  
County of Hennepin  
The foregoing instrument was acknowledged before me this 17th day of July 1979 by J. Klugger, of Metram Properties Company, a Minnesota Corporation, on behalf of said Corporation.

Diane L. Johnson  
Notary Public, Hennepin County, Minnesota  
My Commission Expires June 10, 1983

I hereby certify that I have surveyed and platted the property described on this plat as WADE AND WILSON ADDITION, that this plat is a correct representation of said survey; that all distances are correctly shown in feet and hundredths of a foot; that all monuments have been correctly placed in the ground as shown; that the outside boundary lines are correctly designated; and that there are no wetlands or public highways to be designated on said plat.

Calvin H. Hedlund  
Calvin H. Hedlund, Land Surveyor  
Minnesota Registration No. 5942

State of Minnesota  
County of Hennepin  
The foregoing instrument was acknowledged before me this 4th day of June 1979 by Calvin H. Hedlund, Land Surveyor.

Karen M. Armstrong  
Notary Public, Hennepin County, Minnesota  
My Commission Expires 2/19/80

BLOOMINGTON, MINNESOTA  
The plat of WADE AND WILSON ADDITION was approved and accepted by the City Council of Bloomington, Minnesota, at a regular meeting thereof held this      day of      19    .

CITY COUNCIL OF BLOOMINGTON, MINNESOTA

By \_\_\_\_\_ Mayor By \_\_\_\_\_ Manager

FINANCE DIVISION, Hennepin County, Minnesota  
I hereby certify that there are no delinquent taxes for all years prior to \_\_\_\_\_ for land described on this plat. Dated this      day of      1979 A.D.

Vernon T. Hoppe, Director By \_\_\_\_\_ Tax Clerk

SURVEY DIVISION, Hennepin County, Minnesota  
Pursuant to Chapter 810, Minnesota Laws of 1969, this plat has been approved this      day of      1979 A.D.

Alver R. Freeman, Hennepin County Surveyor By \_\_\_\_\_

REGISTRAR OF TITLES, Hennepin County, Minnesota  
I hereby certify that the within plat of WADE AND WILSON ADDITION was filed in this office this      day of      1979 A.D. at      o'clock      M.

Wayne A. Johnson, Registrar of Titles By \_\_\_\_\_