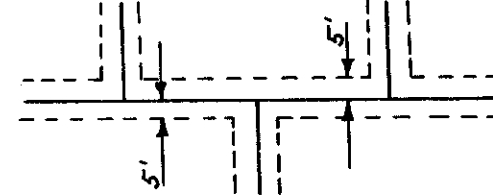


VALLEY VIEW THIRD ADDITION

HENNEPIN COUNTY, MINNESOTA



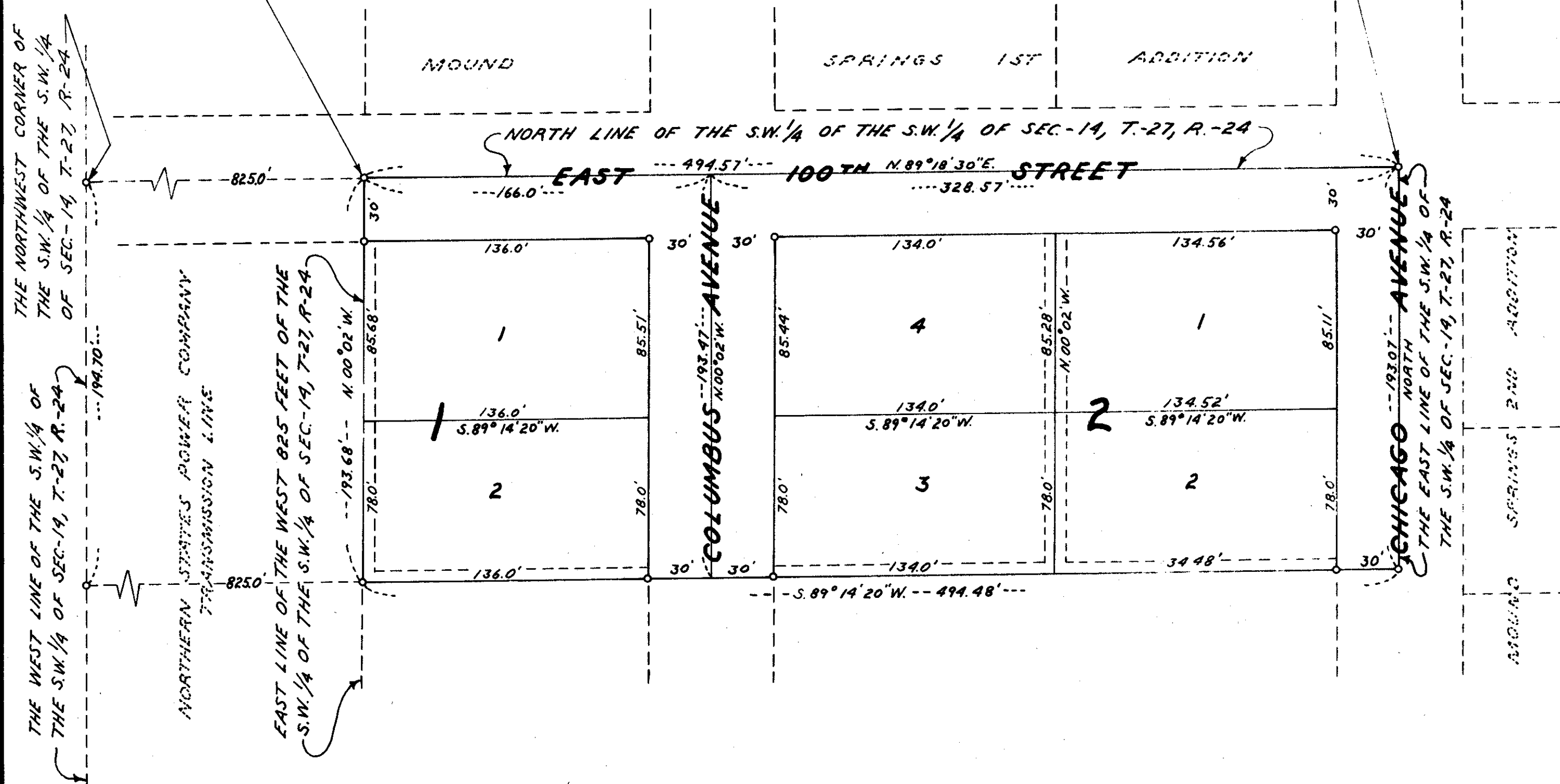
DASHED LINES DENOTE DRAINAGE & UTILITY EASEMENTS AND ARE FIVE FEET IN WIDTH ON EACH SIDE OF LOT LINES UNLESS OTHERWISE SHOWN.



"O" DENOTES IRON MONUMENT BEARINGS SHOWN ARE ASSUMED

A POINT 825.0 FEET EAST OF THE NORTHWEST CORNER OF THE S.W. 1/4 OF THE S.W. 1/4 OF SEC.-19, T.-27, R.-24

THE NORTHEAST CORNER OF THE S.W. 1/4 OF THE S.W. 1/4 OF SEC.-19, T.-27, R.-24



Know all men by these presents: That George R. Butler Construction Co., a Minnesota Corporation, as owner and proprietor of the following described property situated in the State of Minnesota and County of Hennepin to wit: That part of the Southwest 1/4 of the Southwest 1/4 of Section 14, Township 27, Range 24, lying East of the West 825 feet thereof and lying North of a line running from a point on the West line of said Southwest 1/4 of the Southwest 1/4, 194.70 feet South of the Northwest corner thereof to a point in the East line of said Southwest 1/4 of the Southwest 1/4, 193.07 feet South of the Northeast corner thereof. Has caused the same to be surveyed and platted as VALLEY VIEW THIRD ADDITION and do hereby donate and dedicate to the public for the public use forever the avenues and street and also the easements for utility and drainage purposes as shown on the annexed plat. In witness whereof George R. Butler Construction Co. has caused these presents to be signed by its proper officers and its corporate seal to be hereunto affixed on this ___ day of ___ A.D. 1962

In Presence Of

Signed

George R. Butler Construction Co.

its President

George R. Butler

its Secretary

Mildred B. Butler

State of Minnesota
County of Hennepin On this ___ day of ___ A.D. 1962, before me, a Notary Public, within and for said County and State, personally appeared George R. Butler and Mildred B. Butler, to me personally known, who being by me each duly sworn, did say that they are respectively the President and Secretary of George R. Butler Construction Co., the corporation named in the foregoing instrument, that the seal affixed to said instrument is the corporate seal of said corporation, that said instrument was signed and sealed in behalf of said corporation by authority of its board of directors, and said George R. Butler and Mildred B. Butler acknowledge said instrument to be the free act and deed of said corporation.

Notary Public, Hennepin County, Minnesota
My Commission Expires ___

I hereby certify that I have surveyed and platted the property described and shown on this plat as VALLEY VIEW THIRD ADDITION, that this plat is a correct representation of said survey, that all distances are correctly shown on said plat in feet and decimals of a foot, that the monuments for the guidance of future surveys have been correctly placed in the ground as shown on said plat, that the outside boundary lines are correctly designated on said plat, and there are no wet lands or public highways to be designated on said plat other than as shown thereon.

Calvin H. Hedlund, Surveyor
Minnesota Registration No. 5942

State of Minnesota
County of Hennepin The above certificate was subscribed and sworn to before me, a Notary Public, within and for said County and State, on this ___ day of ___ A.D. 1962

Notary Public, Hennepin County, Minnesota
My Commission Expires ___

The plat of VALLEY VIEW THIRD ADDITION was approved and accepted by the City Council of Bloomington, Minnesota, at a regular meeting thereof held on this ___ day of ___ A.D. 1962

City Council, Bloomington, Minnesota

by Robert O. Smedeen its Mayor

by ___ its Manager

The boundaries of this plat and the boundaries of the blocks therein have been mathematically checked and approved. No determination has been made to ascertain that the legal description agrees with said plat.

Dated this ___ day of ___ A.D. 1962

by Howard W. Perkins, Hennepin County Surveyor