

VALLEY VIEW FIRST ADDITION

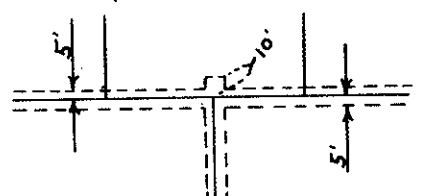
HENNEPIN COUNTY, MINNESOTA

Scale 1"=100'

TAXES PAID ON THE UNRESERVED DESCRIBED PROPERTY FOR 1961
COUNTY TREASURER
Robert F. Atkinson

PAID AND TRANSFER EXTENDED
SEP 20 1961
ROBERT F. ATKINSON, AUDITOR
HENNEPIN COUNTY, MINNESOTA

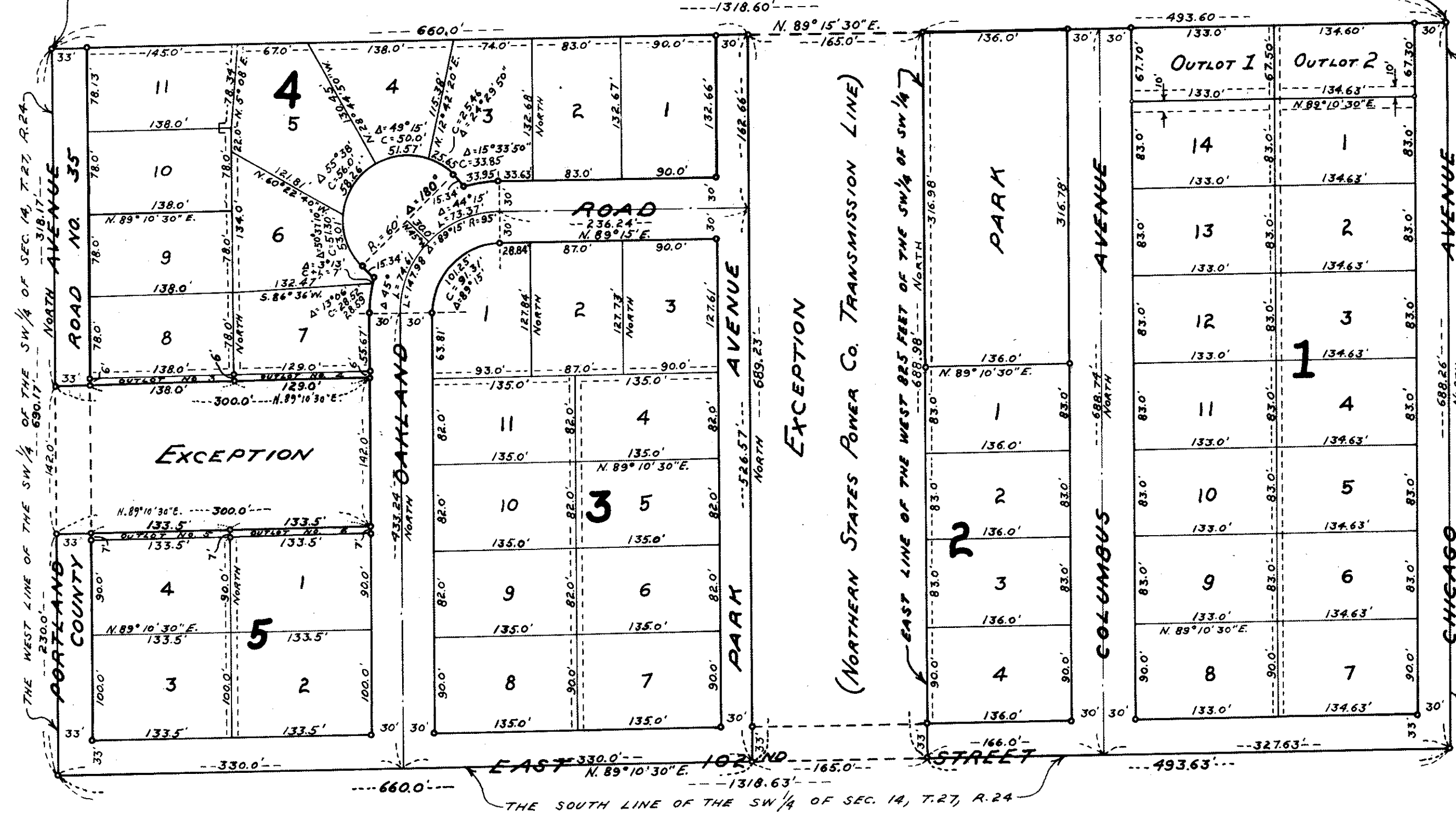
DASHED LINES DENOTE DRAINAGE & UTILITY EASEMENTS AND ARE 5 FEET IN WIDTH ON EACH SIDE OF LOT LINES UNLESS OTHERWISE SHOWN.



"O" DENOTES IRON MONUMENT BEARINGS SHOWN ARE ASSUMED

A POINT 622.8 FT. SOUTH OF THE NORTH WEST CORNER OF SW 1/4 OF SW 1/4 OF SEC. 14, T.27, R.24

A POINT 621.17 FT. SOUTH FROM THE NORTH EAST CORNER OF THE SW 1/4 OF SW 1/4 OF SEC. 14, T.27, R.24



SOEN'S BLOOMINGTON ADDITION

Know all men by these presents: That George R. Butler Construction Co., a Minnesota corporation, as owners and proprietors of the following described property situated in the State of Minnesota and County of Hennepin to wit: That part of the Southwest one-quarter (SW 1/4) of the Southwest one-quarter (SW 1/4) of Section Fourteen (14), Township Twenty Seven (27), Range Twenty Four (24) lying South of a line drawn from a point in the west line thereof, Six Hundred Twenty Two and Eight Tenths Feet (622.8) South of the North-west Corner thereof, to a point in the East line thereof, Six Hundred Twenty One and Seventeen One Hundredths Feet (621.17) South of the Northeast Corner thereof; EXCEPT the West Three Hundred Feet (300) of the North One Hundred Forty Two Feet (142) of the South Three Hundred Seventy Two Feet (372) and EXCEPT the East One Hundred Sixty Five Feet (165) of the West Eight Hundred Twenty Five Feet (825) of said above described Tract, has caused the same to be surveyed and platted as VALLEY VIEW FIRST ADDITION and do hereby donate and dedicate to the public for the public use forever the park, street, road and avenues as shown on the annexed plat and the easements for utility and drainage purposes as shown on the annexed plat. In witness whereof George R. Butler Construction Co. has caused these presents to be signed by its proper officers and its corporate seal to be hereunto affixed on this 18 day of September A.D. 1961

In Presence Of

Signed

Frederic E. Haas
Calvin H. Hedlund

George R. Butler Construction Co.
George R. Butler its President
Claude J. Probst its Secretary

State of Minnesota
County of Hennepin On this 18th day of September A.D. 1961, before me, a Notary Public, within and for said County and State, personally appeared George R. Butler and Claude J. Probst, to me personally known, who being by me each duly sworn, did say that they are respectively the President and Secretary of George R. Butler Construction Co., the corporation named in the foregoing instrument, that the seal affixed to said instrument is the corporate seal of said corporation, that said instrument was signed and sealed in behalf of said corporation by authority of its board of directors, and said George R. Butler and Claude J. Probst acknowledge said instrument to be the free act and deed of said corporation.

Joseph T. Dign
Notary Public, Hennepin County, Minnesota
My Commission Expires March 1, 1968

I hereby certify that I have surveyed and platted the property described and shown on this plat as VALLEY VIEW FIRST ADDITION, that this plat is a correct representation of said survey, that all distances are correctly shown on said plat in feet and decimals of a foot, that the monuments for the guidance of future surveys have been correctly placed in the ground as shown on said plat, that the outside boundary lines are correctly designated on said plat, and there are no wet lands or public highways to be designated on said plat other than as shown thereon.

Calvin H. Hedlund
Calvin H. Hedlund, Minnesota Registration No. 5342
Surveyor

State of Minnesota
County of Hennepin The above certificate was subscribed and sworn to before me, a Notary Public, within and for said County and State, on this 18th day of September A.D. 1961.

Joseph T. Dign
Notary Public, Hennepin County, Minnesota
My Commission Expires March 1, 1968

The plat of VALLEY VIEW FIRST ADDITION was approved and accepted by the City Council of Bloomington, Minnesota, at a regular meeting thereof held on this 18th day of Sept A.D. 1961.

City Council, Bloomington, Minnesota
by *Gordon Middleton* its Mayor
by *Raymond A. Olson* its Manager

The boundaries of this plat and the boundaries of the blocks therein have been mathematically checked and approved. No determination has been made to ascertain that the legal description agrees with said plat.

Dated this 20th day of September A.D. 1961.

by *Howard W. Perkins*
Howard W. Perkins, Hennepin County, Surveyor

REG. LAND SURVEY NO. 179