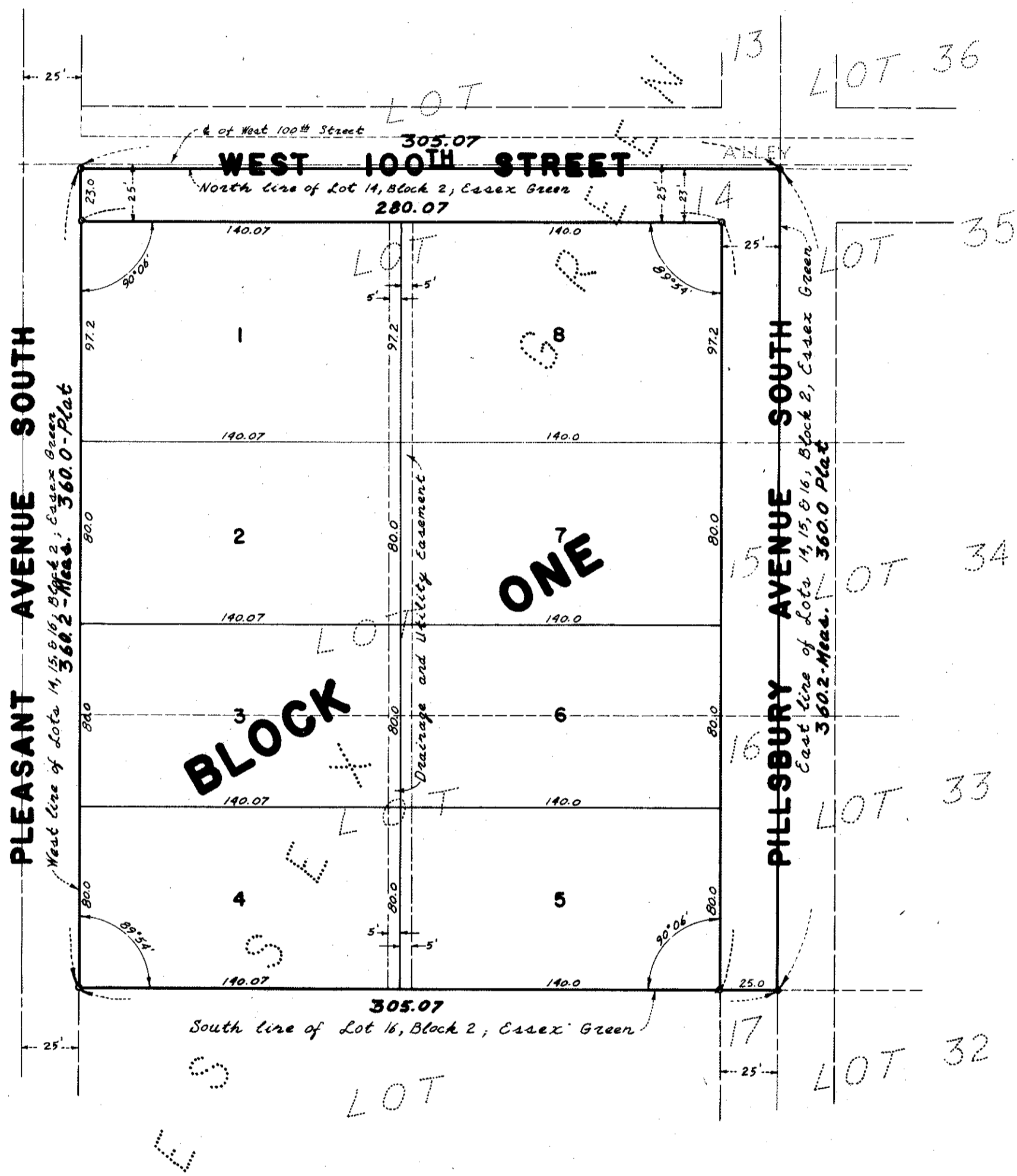


THOMAS C. WAKELY 1ST ADDITION

CITY OF BLOOMINGTON
HENNEPIN COUNTY, MINNESOTA

AUDITORS SUBDIVISION NO. 33



Scale: 1"=50'
Denotes Iron Monument



Know all men by these presents: That Charles G. Holden and Ethel E. Holden, formerly Ethel E. Emerson, husband and wife, owners and proprietors, and Thomas C. Wakely Investment Co., a Minnesota corporation, contract purchaser, of the following described property situate in the County of Hennepin, State of Minnesota, to wit: Lots 14, 15, and 16, Block 2, ESSEX GREEN. Have caused the same to be surveyed and platted as THOMAS C. WAKELY 1ST ADDITION, and do hereby donate and dedicate to the public for the public use forever the street and avenue, as shown on the annexed plat, and also the utility and drainage easements as shown on the annexed plat. In witness whereof, said Charles G. Holden and Ethel E. Holden, formerly Ethel E. Emerson, husband and wife, have hereunto set their hands and seals on this 15th day of NOVEMBER A. D. 1961 and said Thomas C. Wakely Investment Co., have caused these presents to be signed by its proper officer and its corporate seal to be hereunto affixed on this 15th day of NOVEMBER A. D. 1961.

In Presence Of:
Charles G. Holden
Ethel E. Holden

Signed:
Charles G. Holden Charles G. Holden
Ethel E. Holden Ethel E. Holden
By Thomas C. Wakely Investment Co.
Thomas C. Wakely its President

State of Minnesota
County of Hennepin. On this 15th day of November A. D. 1961, before me, a Notary Public, within and for said County and State, personally appeared Charles G. Holden and Ethel E. Holden, formerly Ethel E. Emerson, husband and wife, to me personally known to be the persons described in and who executed the foregoing instrument and they acknowledge that they executed the same as their own free act and deed.

Harlie A. Mann
Notary Public, Hennepin County, Minnesota
My Commission Expires March 22, 1968

State of Minnesota
County of Hennepin. On this 15th day of November A. D. 1961, before me, a Notary Public, within and for said County and State, personally appeared Thomas C. Wakely, to me personally known, who being by me duly sworn, did say that he is the President of Thomas C. Wakely Investment Co., the corporation named in the foregoing instrument, that the seal affixed to said instrument is the corporate seal of said corporation, that said instrument was signed and sealed in behalf of said corporation by authority of its board of directors, and said Thomas C. Wakely acknowledges said instrument to be the free act and deed of said corporation.

Harlie A. Mann
Notary Public, Hennepin County, Minnesota
My Commission Expires March 22, 1968

I hereby certify that I have surveyed and platted the property described and shown on this plat as THOMAS C. WAKELY 1ST ADDITION, that this plat is a correct representation of said survey, that all distances are correctly shown on said plat in feet and decimals of a foot, that the monuments for the guidance of future surveys have been correctly placed in the ground as shown on said plat, that the outside boundary lines are correctly designated on said plat, and that there are no wet lands or public highways to be designated on said plat other than as shown thereon.

Harry S. Johnson
Harry S. Johnson, Minnesota Registration No. 5065

State of Minnesota
County of Hennepin. The above certificate was subscribed and sworn to before me, a Notary Public, within and for said County and State on this 16th day of November A. D. 1961.

Raymond C. Schuler
Notary Public, Hennepin County, Minnesota
My Commission Expires 13 August 1966

The plat of THOMAS C. WAKELY 1ST ADDITION, was approved and accepted by the City Council of Bloomington, Minnesota at a regular meeting thereof held on this 20th day of November A. D. 1961.

City of Bloomington, Minnesota
By James M. McInerney its Mayor
By Raymond A. Olsen its Manager

The boundaries of this plat and the boundaries of the block therein have been mathematically checked and approved. No determination has been made to ascertain that the legal description agrees with said plat.
Dated this _____ day of _____ A. D. 1961.

By _____
Howard W. Perkins, Hennepin County, Surveyor

