

SPRING VALLEY 3RD ADDITION

CITY OF BLOOMINGTON

HENNEPIN COUNTY, MINNESOTA

KNOW ALL MEN BY THESE PRESENTS: That Mattson Homes, Inc., a Minnesota corporation, owner and proprietor, and Richfield Bank and Trust Co., a Minnesota corporation, mortgagee of the following described property situate in the County of Hennepin, State of Minnesota, to wit: Outlots 1, 6 and 7, SPRING VALLEY, according to the plat thereof on file and of record in the office of the Registrar of Titles in and for said County; Outlots 1, 2 and 3, SPRING VALLEY 2ND ADDITION, according to the plat thereof on file and of record in the office of the Registrar of Titles in and for said County; have caused the same to be surveyed and platted as SPRING VALLEY 3RD ADDITION and do hereby donate and dedicate to the public for public use forever the drive, circle, avenues, streets, and the drainage and utility easements as shown on the annexed plat. In witness whereof Richfield Bank and Trust Co. has caused these presents to be signed by its proper officers and its corporate seal to be hereunto affixed this _____ day of _____ A.D. 1967, and Mattson Homes, Inc. has caused these presents to be signed by its proper officers and its corporate seal to be hereunto affixed this _____ day of _____ A.D. 1967.

IN PRESENCE OF:

SIGNED: RICHFIELD BANK AND TRUST CO.

President

Executive Vice President

SIGNED: MATTSON HOMES, INC.

President

Secretary

State of Minnesota On this _____ day of _____ A.D. 1967, before me, a Notary Public, within and for said County and State appeared W. G. Kirchner and Chester N. Eggen, to me personally known, who being by me each duly sworn did say that they are respectively President and Executive Vice President of Richfield Bank and Trust Co., the corporation named in the foregoing instrument, that the seal affixed to said instrument is the corporate seal of said corporation, that said instrument was signed and sealed in behalf of said corporation by authority of its Board of Directors, and said W. G. Kirchner and Chester N. Eggen acknowledge said instrument to be the free act and deed of said corporation.

Notary Public, Hennepin County, Minnesota

My Commission Expires _____

State of Minnesota On this _____ day of _____ A.D. 1967, before me, a Notary Public, within and for said County and State appeared Johnny P. Mattson and Dennis Mattson, to me personally known, who being by me each duly sworn did say that they are respectively president and secretary of Mattson Homes, Inc., the corporation named in the foregoing instrument that the seal affixed to said instrument is the corporate seal of said corporation, that said instrument was signed and sealed in behalf of said corporation by authority of its Board of Directors, and said Johnny P. Mattson and Dennis Mattson acknowledge said instrument to be the free act and deed of said corporation.

Notary Public, Hennepin County, Minnesota

My Commission Expires _____

I hereby certify that I have surveyed and platted the property described on this plat as SPRING VALLEY 3RD ADDITION; that this plat is a correct representation of said survey; that all distances are correctly shown on said plat in feet and decimals of a foot; that the monuments for guidance of future surveys have been correctly placed in the ground as shown on said plat; that the outside boundary lines are correctly designated on said plat; and that there are no wetlands or public highways to be designated on said plat other than are shown thereon.

Harry S. Johnson
 Land Surveyor Minn. Reg. No. 5065

State of Minnesota The above certificate was subscribed and sworn to before me, a Notary Public within and for said County and State, on this _____ day of _____ A.D. 1967.

Notary Public, Hennepin County, Minnesota

My Commission Expires _____

The annexed plat of SPRING VALLEY 3RD ADDITION was approved and accepted by the City Council of Bloomington, Minnesota, at a regular meeting thereof held this _____ day of _____ A.D. 1967.

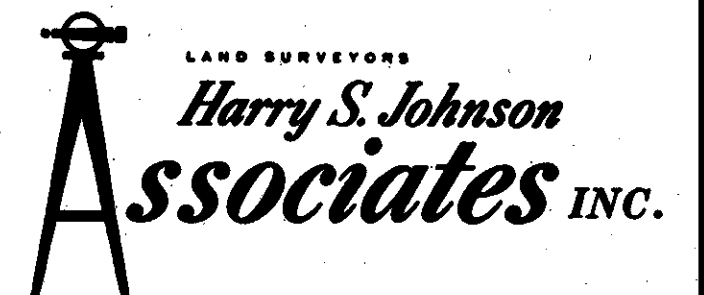
CITY COUNCIL, BLOOMINGTON, MINNESOTA

By _____ Mayor

By _____ Manager

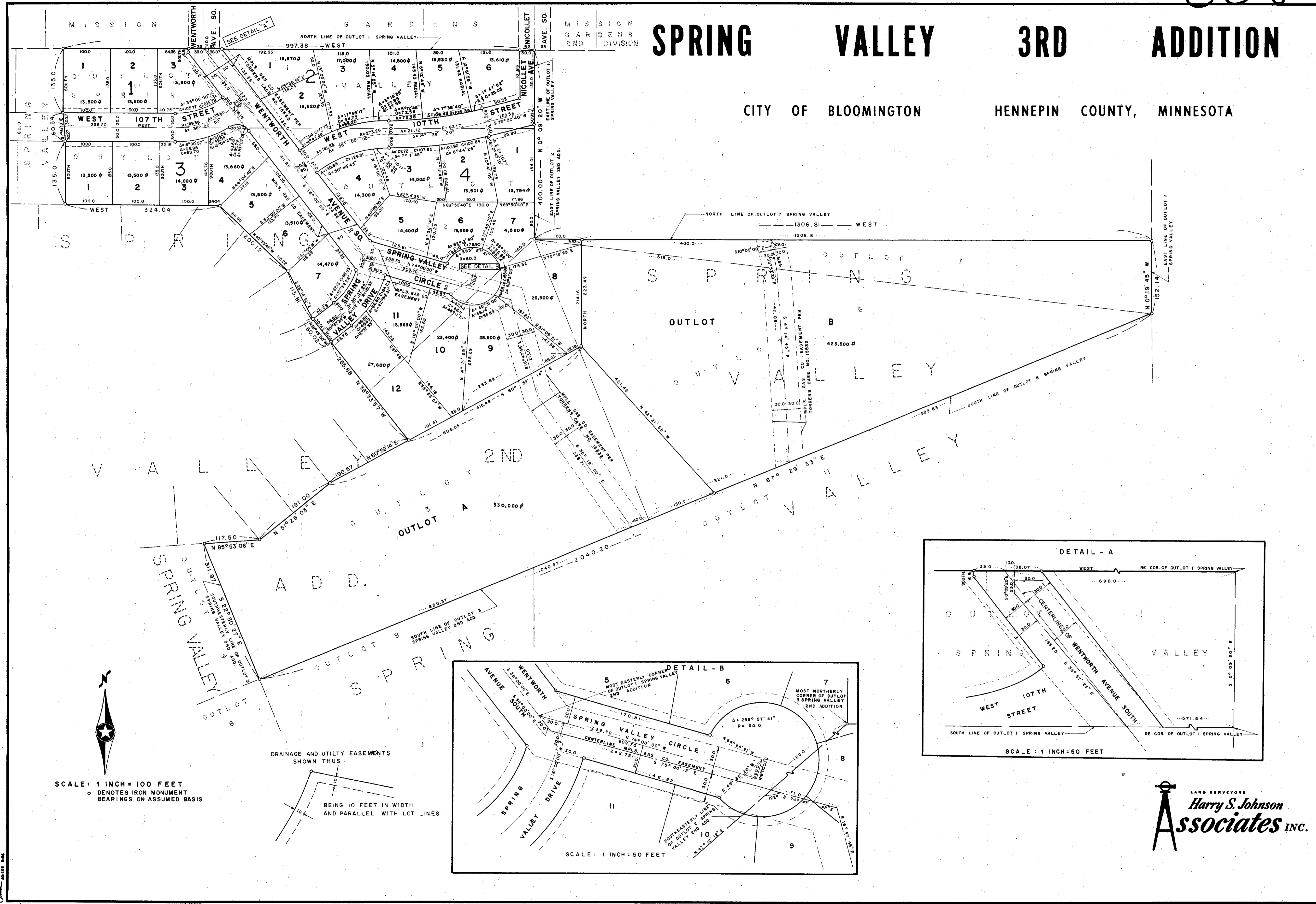
The boundaries of this plat and the boundaries of the blocks therein have been mathematically checked and approved. No determination has been made to ascertain that the legal description agrees with said plat. Dated this _____ day of _____ A.D. 1967.

By _____
 Elmer J. Peterson, Hennepin County Surveyor



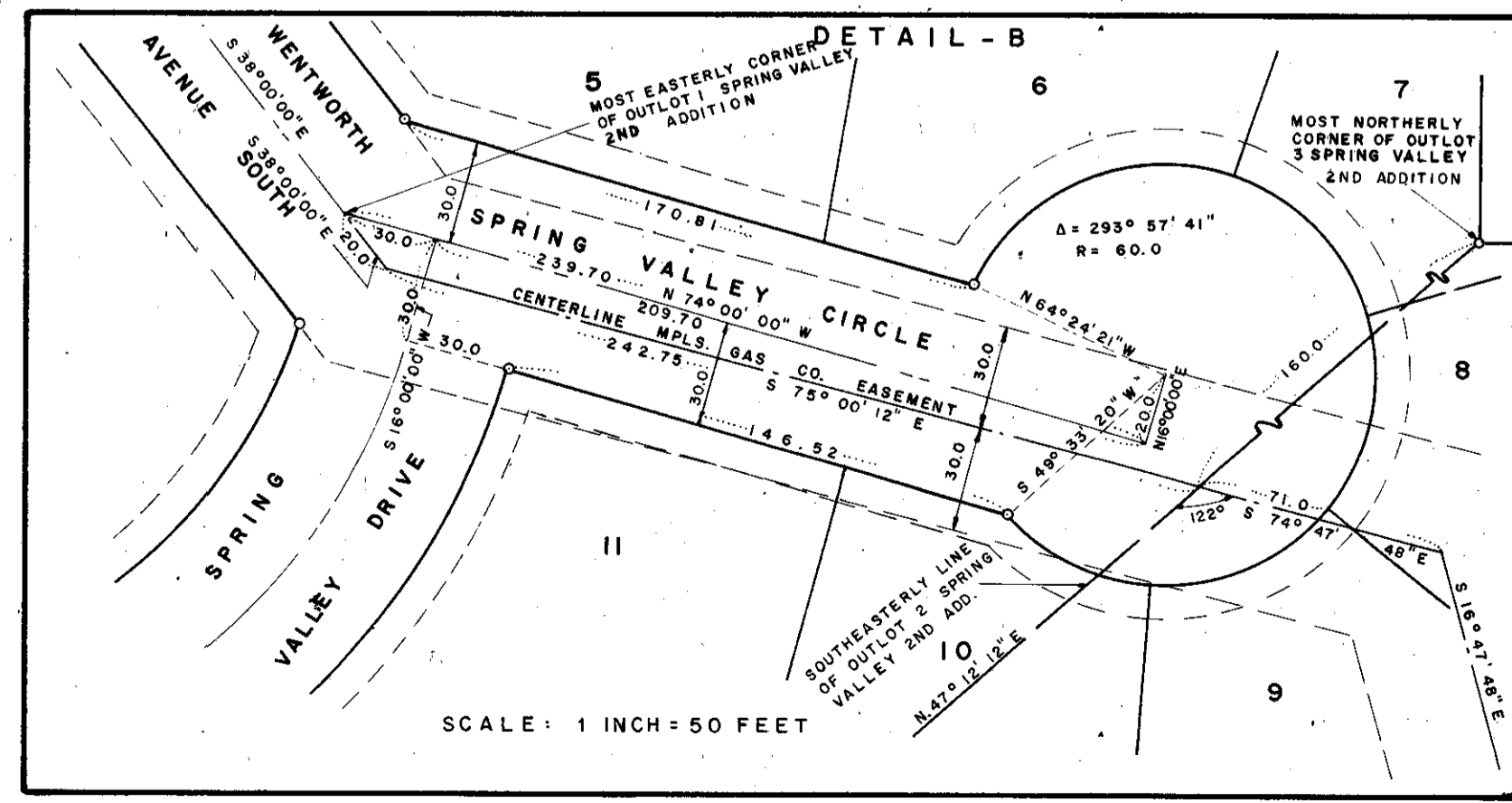
SPRING VALLEY 3RD ADDITION

CITY OF BLOOMINGTON HENNEPIN COUNTY, MINNESOTA

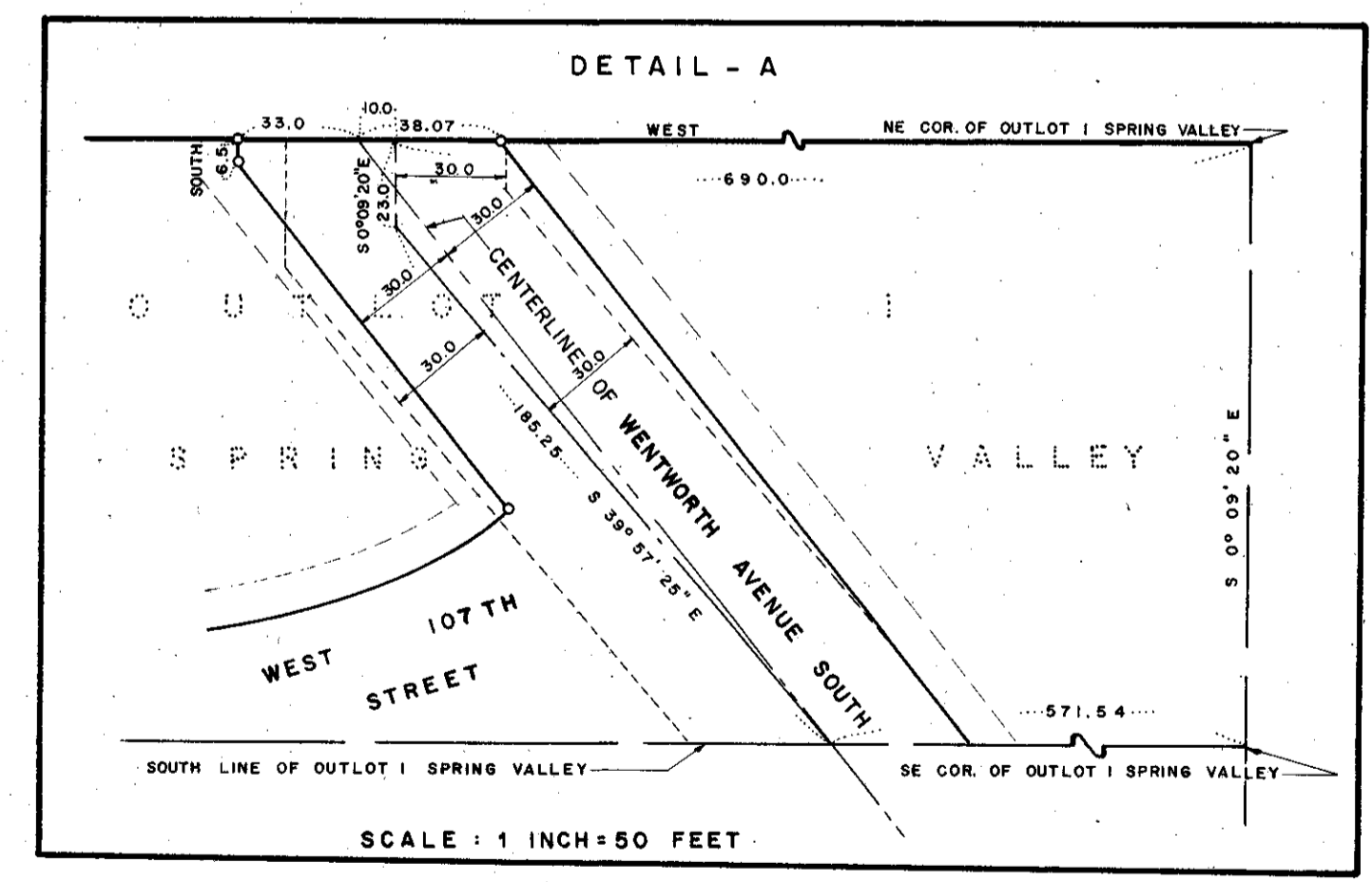


SCALE: 1 INCH = 100 FEET
 ○ DENOTES IRON MONUMENT BEARINGS ON ASSUMED BASIS

DRAINAGE AND UTILITY EASEMENTS SHOWN, THUS:
 BEING 10 FEET IN WIDTH AND PARALLEL WITH LOT LINES



SCALE: 1 INCH = 50 FEET



SCALE: 1 INCH = 50 FEET

LAND SURVEYORS
Harry S. Johnson Associates INC.