

SPRING VALLEY 2ND ADDITION

CITY OF BLOOMINGTON
HENNEPIN COUNTY, MINNESOTA

KNOW ALL MEN BY THESE PRESENTS; THAT MATTSOHN HOMES, INC., A MINNESOTA CORPORATION, OWNER AND PROPRIETOR, AND RICHFIELD BANK & TRUST CO., A MINNESOTA CORPORATION, MORTGAGEE OF THE FOLLOWING DESCRIBED PROPERTY SITUATE IN THE COUNTY OF HENNEPIN, STATE OF MINNESOTA, TO WIT: OUTLOTS 2, 3 AND 5, SPRING VALLEY, ACCORDING TO THE PLAT THEREOF ON FILE AND OF RECORD IN THE OFFICE OF THE REGISTER OF DEEDS IN AND FOR SAID COUNTY, HAVE CAUSED THE SAME TO BE SURVEYED AND PLATTED AS SPRING VALLEY 2ND ADDITION AND DO HEREBY DONATE AND DEDICATE TO THE PUBLIC FOR PUBLIC USE FOREVER THE DRIVE, CIRCLE AND THE DRAINAGE AND UTILITY EASEMENTS AS SHOWN ON THE ANNEXED PLAT. IN WITNESS WHEREOF RICHFIELD BANK & TRUST CO. HAS CAUSED THESE PRESENTS TO BE SIGNED BY ITS PROPER OFFICERS AND ITS CORPORATE SEAL TO BE HEREUNTO AFFIXED THIS DAY OF _____ A.D. 1964, AND MATTSOHN HOMES, INC. HAS CAUSED THESE PRESENTS TO BE SIGNED BY ITS PROPER OFFICERS AND ITS CORPORATE SEAL TO BE HEREUNTO AFFIXED THIS _____ DAY OF _____ A. D. 1964.

IN PRESENCE OF: _____ SIGNED: RICHFIELD BANK & TRUST CO.

PRESIDENT

EXECUTIVE VICE-PRESIDENT

SIGNED: MATTSOHN HOMES, INC.

PRESIDENT

SECRETARY

STATE OF MINNESOTA COUNTY OF HENNEPIN ON THIS _____ DAY OF _____ A. D. 1964, BEFORE ME, A NOTARY PUBLIC, WITHIN AND FOR SAID COUNTY AND STATE APPEARED W. G. KIRCHNER AND CHESTER N. EGGEN, TO ME PERSONALLY KNOWN, WHO BEING BY ME EACH DULY SWORN DID SAY THAT THEY ARE RESPECTIVELY PRESIDENT AND EXECUTIVE VICE-PRESIDENT OF RICHFIELD BANK & TRUST CO., THE CORPORATION NAMED IN THE FOREGOING INSTRUMENT, THAT THE SEAL AFFIXED TO SAID INSTRUMENT IS THE CORPORATE SEAL OF SAID CORPORATION, THAT SAID INSTRUMENT WAS SIGNED AND SEALED IN BEHALF OF SAID CORPORATION BY AUTHORITY OF ITS BOARD OF DIRECTORS, AND SAID W. G. KIRCHNER AND CHESTER N. EGGEN ACKNOWLEDGE SAID INSTRUMENT TO BE THE FREE ACT AND DEED OF SAID CORPORATION.

NOTARY PUBLIC, HENNEPIN COUNTY, MINNESOTA
MY COMMISSION EXPIRES _____

STATE OF MINNESOTA COUNTY OF HENNEPIN ON THIS _____ DAY OF _____ A. D. 1964, BEFORE ME, A NOTARY PUBLIC, WITHIN AND FOR SAID COUNTY AND STATE APPEARED JOHNNY P. MATTSOHN AND DENNIS MATTSOHN, TO ME PERSONALLY KNOWN, WHO BEING BY ME EACH DULY SWORN DID SAY THAT THEY ARE RESPECTIVELY PRESIDENT AND SECRETARY OF MATTSOHN HOMES, INC., THE CORPORATION NAMED IN THE FOREGOING INSTRUMENT, THAT THE SEAL AFFIXED TO SAID INSTRUMENT IS THE CORPORATE SEAL OF SAID CORPORATION, THAT SAID INSTRUMENT WAS SIGNED AND SEALED IN BEHALF OF SAID CORPORATION BY AUTHORITY OF ITS BOARD OF DIRECTORS, AND SAID JOHNNY P. MATTSOHN AND DENNIS MATTSOHN ACKNOWLEDGE SAID INSTRUMENT TO BE THE FREE ACT AND DEED OF SAID CORPORATION.

NOTARY PUBLIC, HENNEPIN COUNTY, MINNESOTA
MY COMMISSION EXPIRES _____

I HEREBY CERTIFY THAT I HAVE SURVEYED AND PLATTED THE PROPERTY DESCRIBED ON THIS PLAT AS SPRING VALLEY 2ND ADDITION; THAT THIS PLAT IS A CORRECT REPRESENTATION OF SAID SURVEY; THAT ALL DISTANCES ARE CORRECTLY SHOWN ON SAID PLAT IN FEET AND DECIMALS OF A FOOT; THAT THE MONUMENTS FOR THE GUIDANCE OF FUTURE SURVEYS HAVE BEEN CORRECTLY PLACED IN THE GROUND AS SHOWN ON SAID PLAT; THAT THE OUTSIDE BOUNDARY LINES ARE CORRECTLY DESIGNATED ON SAID PLAT; AND THAT THERE ARE NO WETLANDS OR PUBLIC HIGHWAYS TO BE DESIGNATED ON SAID PLAT OTHER THAN ARE SHOWN THEREON.

Harry S. Johnson
LAND SURVEYOR, MINNESOTA REGISTRATION NO. 5065

STATE OF MINNESOTA COUNTY OF HENNEPIN THE ABOVE CERTIFICATE WAS SUBSCRIBED AND SWORN TO BEFORE ME, A NOTARY PUBLIC, WITHIN AND FOR SAID COUNTY AND STATE, ON THIS 12th DAY OF March A. D. 1964.

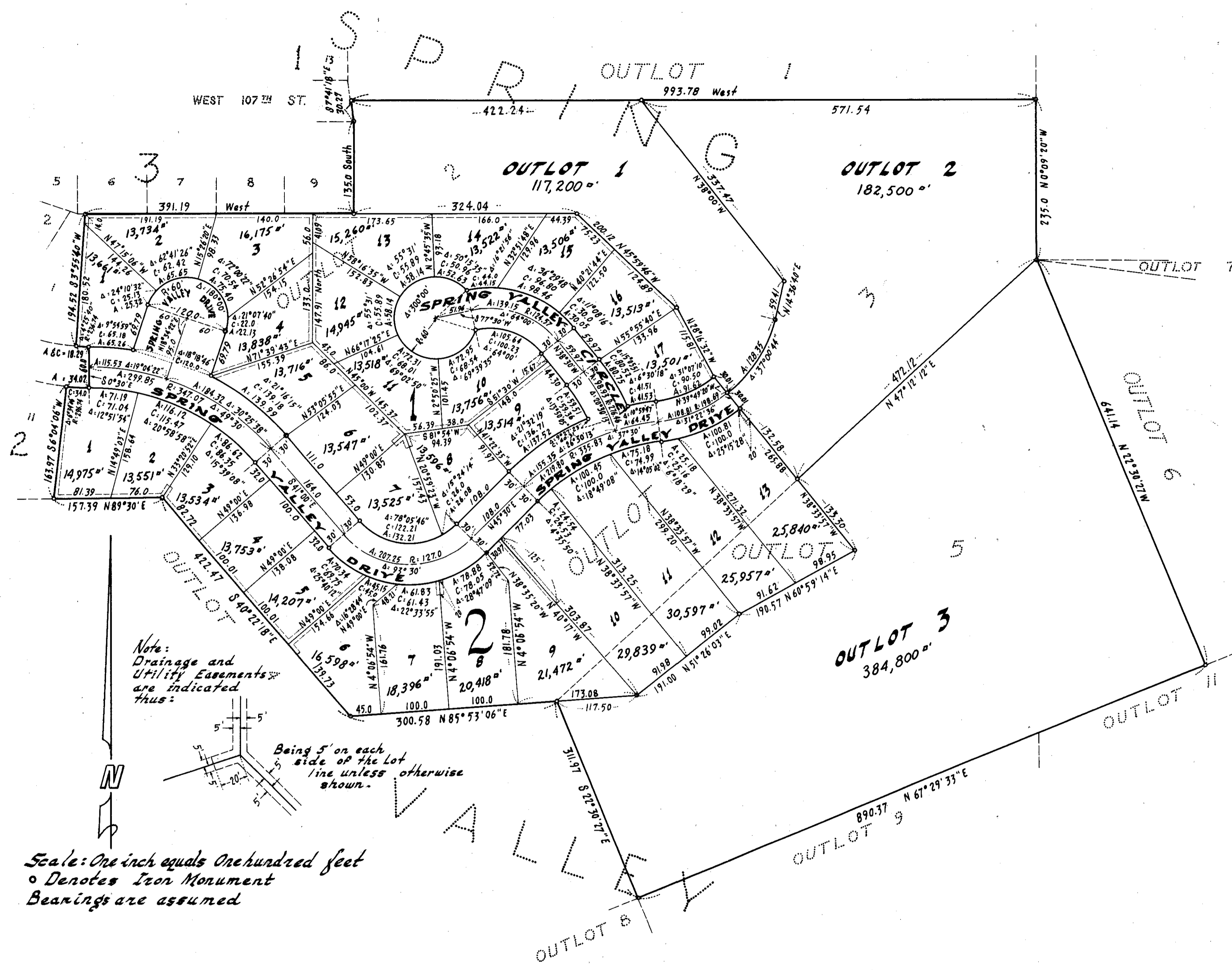
Raymond C. Schultz
NOTARY PUBLIC, HENNEPIN COUNTY, MINNESOTA
MY COMMISSION EXPIRES 13 August 1966
RAYMOND C. SCHULTZ
Notary Public, Hennepin County, Minn.
My Commission Expires Aug. 13, 1966.

THE BOUNDARIES OF THIS PLAT AND THE BOUNDARIES OF THE BLOCKS THEREIN HAVE BEEN MATHEMATICALLY CHECKED AND APPROVED. NO DETERMINATION HAS BEEN MADE TO ASCERTAIN THAT THE LEGAL DESCRIPTION AGREES WITH SAID PLAT. DATED THIS _____ DAY OF _____ A. D. 1964

BY _____
HOWARD W. PERKINS, HENNEPIN COUNTY SURVEYOR

THE ANNEXED PLAT OF SPRING VALLEY 2ND ADDITION WAS APPROVED AND ACCEPTED BY THE CITY COUNCIL OF BLOOMINGTON, MINNESOTA, AT A REGULAR MEETING THEREOF HELD THIS _____ DAY OF _____ A. D. 1964.

CITY COUNCIL, BLOOMINGTON, MINNESOTA:
BY _____ ITS MAYOR
ATTEST:
BY _____ ITS MANAGER



Note:
Drainage and
Utility Easements
are indicated
thus:

Being 5' on each
side of the lot
line unless otherwise
shown.

Scale: One inch equals One hundred feet
o Denotes Iron Monument
Bearings are assumed

