

SOENS BLOOMINGTON ADDITION

HENNEPIN COUNTY, MINN.

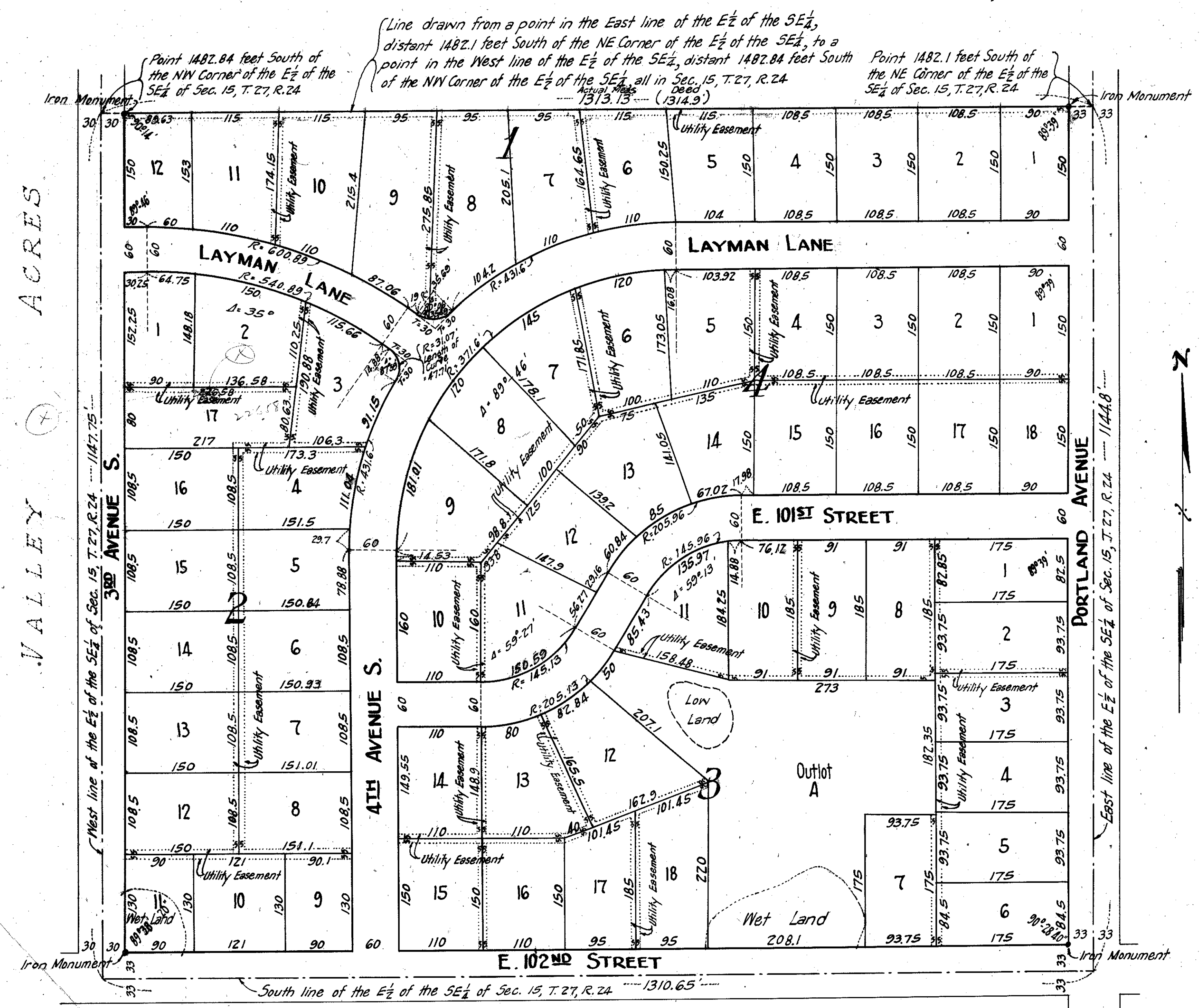
TOWN OF BLOOMINGTON

JULY - 1951

EGAN, FIELD & NOWAK

Engineers & Surveyors

SCALE: 1" = 100'



Know all men by these presents that Opal M. Soens, widow, owner and proprietor of the following described property situated in the State of Minnesota and County of Hennepin to-wit: All that part of the East 1/2 of the Southeast 1/4 of Section 15, Township 27, Range 24, lying South of the following described line: Commencing at a point on the East line of said Section a distance of Fourteen Hundred Eighty-two and 1/4 (1482.1) feet South from the Northeast Corner thereof; thence West a distance of 1314.9 feet to a point on the West line thereof distant 1482.84 feet South from the Northwest Corner of said East 1/2 of the Southeast 1/4 as measured along the West line thereof, according to the U. S. Gov't. Survey thereof; Has caused the same to be surveyed and platted as SOENS BLOOMINGTON ADDITION and do hereby donate and dedicate to the public for the public use forever, the streets and avenues as shown on the annexed plat. In witness whereof, said Opal M. Soens has hereunto set her hand and seal this 20th day of August A. D. 1951.

In Presence of:-
 Richard V. Jamme }
 Robert W. Sletten } As to Opal M. Soens
 Opal M. Soens (SEAL)
 Opal M. Soens

State of Minnesota } S.S.
 County of Hennepin } On this 20th day of August A. D. 1951, before me, a Notary Public within and for said County and State, personally appeared Opal M. Soens, to me known to be the person described in and who executed the foregoing instrument and she acknowledges the same as her own free act and deed.

Nathan Reikin
 Notary Public, Hennepin County, Minnesota
 My Commission Expires January 24, 1957



State of Minnesota } S.S.
 County of Hennepin } I do hereby certify that I have surveyed and platted the property described on this plat as Soens Bloomington Addition; that this plat is a correct representation of said survey; that all distances are correctly shown in feet and decimals of a foot; that the monuments for guidance of future surveys are correctly placed in the ground as shown on the plat; that the outside boundary lines are correctly designated on the plat; that the topography of the land is correctly designated on the plat; and that there are no wet lands or public highways to be designated on the plat other than as shown thereon.

Otto G. Nowak
 Surveyor - Minn. Reg. No. 921

Above certificate subscribed and sworn to before me, a Notary Public, on this 17th day of August A. D. 1951.

Marshall Seaford
 Notary Public, Hennepin County, Minnesota
 My Commission Expires March 19, 1953



Approved and accepted this ___ day of ___ A. D. 1951.

County Surveyor, Hennepin County, Minn.

Approved as to form and execution this ___ day of ___ A. D. 1951.

Special Assistant County Attorney
 Hennepin County, Minn.

Recommended for approval this ___ day of ___ A. D. 1951.

County Engineer, Hennepin County, Minn.

This plat was approved and accepted by the Board of County Commissioners of Hennepin County, Minnesota, at a regular meeting thereof held this ___ day of ___ A. D. 1951.

County Auditor, Hennepin County, Minn.

The annexed plat was approved by the Planning and Zoning Commission of Bloomington Township, Minnesota, this 21st day of August A. D. 1951.

by Henry G. Johnson Chairman
 by A. G. Helter Secretary

VALLEY ACRES