

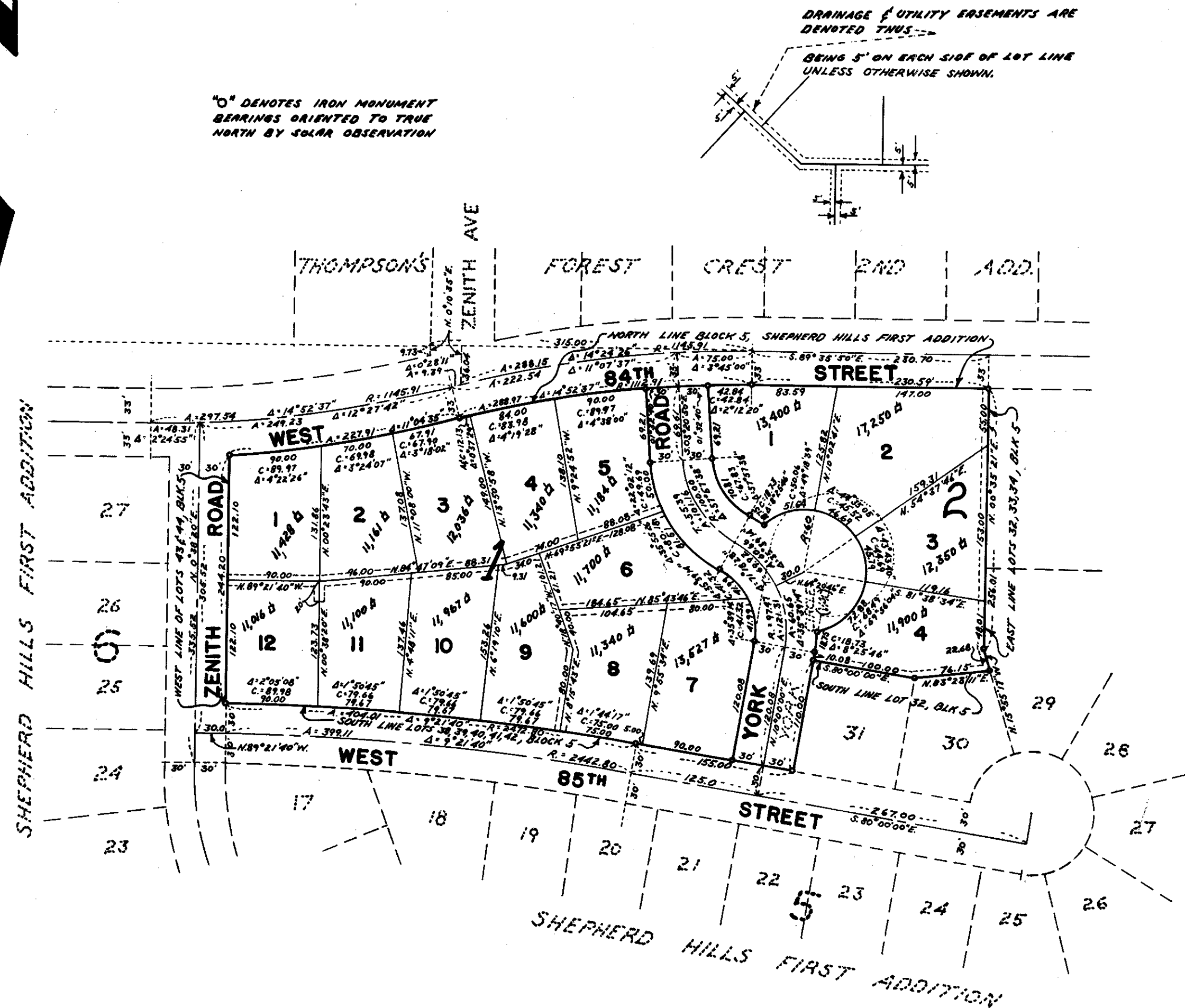
# SHEPHERD HILLS SECOND ADDITION

CITY OF BLOOMINGTON  
HENNEPIN COUNTY, MINNESOTA



0° DENOTES IRON MONUMENT  
BEARINGS ORIENTED TO TRUE  
NORTH BY SOLAR OBSERVATION

DRAINAGE & UTILITY EASEMENTS ARE  
DENOTED THUS  
5' BRINGS 5' ON EACH SIDE OF LOT LINE  
UNLESS OTHERWISE SHOWN.



KNOW ALL MEN BY THESE PRESENTS: That Marvin H. Anderson Construction Co., a Minnesota Corporation, as owner and proprietor of the following described property situated in the State of Minnesota and County of Hennepin to wit; Lots 32 through 48 inclusive, Block 5, Shepherd Hills First Addition, together with vacated York Circle as shown in the plat of Shepherd Hills First Addition. Has caused the same to be surveyed and platted as SHEPHERD HILLS SECOND ADDITION and do hereby donate and dedicate to the public for the public use forever the road and the easements for utility and drainage purposes as shown on the annexed plat. In witness whereof Marvin H. Anderson Construction Co. has caused these presents to be signed by its proper officers and its corporate seal to be hereunto affixed on this \_\_\_\_\_ day of \_\_\_\_\_ A.D. 1963.

Signed

In Presence of

Marvin H. Anderson Construction Co.

Marvin H. Anderson, President

Joseph T. Dixon, Vice-President

State of Minnesota  
County of Hennepin On this \_\_\_\_\_ day of \_\_\_\_\_ A.D. 1963, before me, a Notary Public, within and for said County and State, personally appeared Marvin H. Anderson and Joseph T. Dixon, to me personally known, who being by me each duly sworn, did say that they are the president and vice-president, respectively of Marvin H. Anderson Construction Co., the corporation named in the foregoing instrument; that the seal affixed to said instrument is the corporate seal of said corporation; that said instrument was signed and sealed in behalf of said corporation by authority of its board of directors and said Marvin H. Anderson and Joseph T. Dixon acknowledge said instrument to be the free act and deed of said corporation.

Notary Public, Hennepin County, Minnesota  
My Commission Expires \_\_\_\_\_

I hereby certify that I have surveyed and platted the property described on this plat as SHEPHERD HILLS SECOND ADDITION; that this plat is a correct representation of said survey; that all distances are correctly shown on the plat in feet and decimals of a foot; that the monuments for guidance of future surveys have been correctly placed in the ground as shown on said plat; that the outside boundary lines are correctly designated on said plat; and that there are no wetlands or public highways to be designated on said plat other than as shown thereon.

Calvin H. Hedlund, Land Surveyor  
Minnesota Registration No. 5942

State of Minnesota  
County of Hennepin The above certificate was subscribed and sworn to before me, a Notary Public, within and for said County and State on this \_\_\_\_\_ day of \_\_\_\_\_ A.D. 1963.

Notary Public, Hennepin County, Minnesota  
My Commission Expires \_\_\_\_\_

The boundaries of this plat and the boundaries of the blocks therein have been mathematically checked and approved. No determination has been made to ascertain that the legal description agrees with said plat. Dated this \_\_\_\_\_ day of \_\_\_\_\_ A.D. 1963.

by Howard W. Perkins, Hennepin County Surveyor

The annexed plat of SHEPHERD HILLS SECOND ADDITION was approved and accepted by the City Council of Bloomington, Minnesota, at a regular meeting thereof held this \_\_\_\_\_ day of \_\_\_\_\_ A.D. 1963.

City Council, Bloomington, Minnesota

by \_\_\_\_\_ its Mayor

by \_\_\_\_\_ its Manager