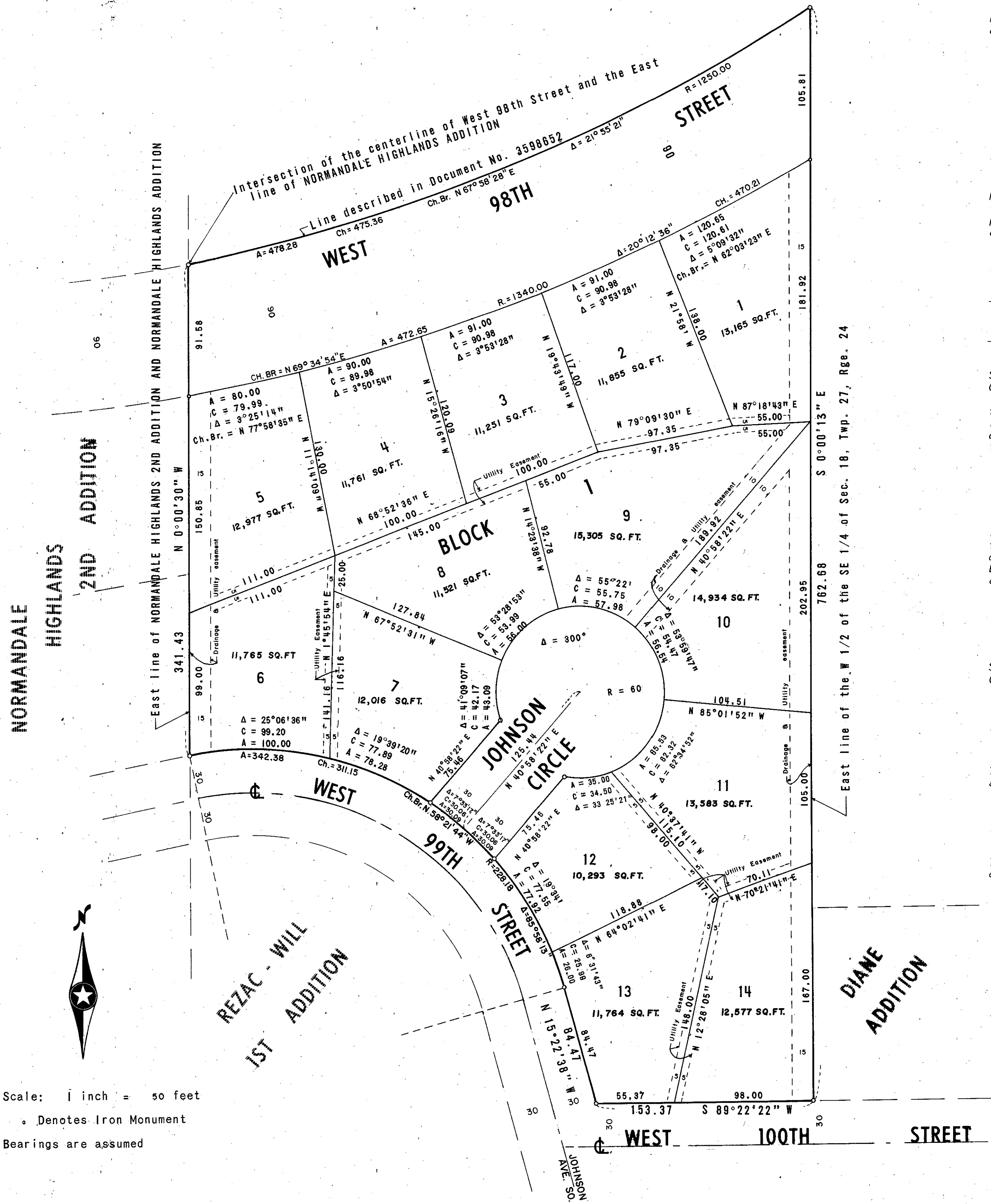


SALLY APPELBAUM ADDITION

CITY OF BLOOMINGTON

HENNEPIN COUNTY, MINNESOTA



KNOW ALL MEN BY THESE PRESENTS: That Storer Realty Co., a Minnesota corporation, owner and proprietor of the following described property situate in the County of Hennepin, State of Minnesota, to wit:-

That part of the West 1/2 of the Southeast 1/4 of Section 18, Township 27, Range 24, Hennepin County, Minnesota lying Northerly of REZAC-WILL 1ST ADDITION, Hennepin County, Minnesota, and lying Easterly of Block 2, NORMANDEALE HIGHLANDS 2ND ADDITION, and NORMANDEALE HIGHLANDS ADDITION, Hennepin County, Minnesota, and lying Southerly of a line described as beginning at a point on the East line of the Northeast 1/4 of Section 18, Township 27, Range 24, Hennepin County, Minnesota distant 330.40 feet North of the Southeast corner of said Northeast 1/4; thence Westerly at an angle of 90°11'20" from said East line (As measured from South to West) a distance of 114.38 feet; thence along the arc of a tangential curve to the left (radius 1145.92 feet, central angle 37°) a distance of 740.00 feet; thence continuing tangent to said curve a distance of 559.32 feet; thence along the arc of a tangential curve to the right (radius 1250.00 feet, central angle 25°44'09") a distance of 561.47 feet to the intersection of the centerline of 98th Street and the East line of Normandale Highlands Addition, Hennepin County, Minnesota, as now platted; and there terminating.

Has caused the same to be surveyed and platted as SALLY APPELBAUM ADDITION and do hereby donate and dedicate to the public for public use forever the circle, street, and also the easements for drainage and utility purposes as shown on the annexed plat. In witness whereof, Storer Realty Co., a Minnesota corporation, has caused these presents to be signed by its proper officers and its corporate seal to be hereunto affixed this 7 day of MARCH A.D. 1968.

IN PRESENCE OF:

Robert Helander Constantine P. Carlson
Robert Helander Constantine P. Carlson

SIGNED: STORER REALTY CO.
James K. Knoble Its President
Kenneth Appelbaum Its Secretary

State of Minnesota On this 7 day of MARCH A.D. 1968, before me, a Notary Public, within and for said County of Hennepin County and State, personally appeared James K. Knoble and Kenneth Appelbaum, to me personally known, who being by me each duly sworn, did say that they are the President and Secretary, respectively, of the Storer Realty Co., the corporation named in the foregoing instrument; that the seal affixed to said instrument is the corporate seal of said corporation; that said instrument was signed and sealed in behalf of said corporation by authority of its Board of Directors and said James K. Knoble and Kenneth Appelbaum acknowledge said instrument to be the free act and deed of said corporation.

Robert Helander
 Notary Public, Hennepin County, Minnesota
 My Commission Expires MAY 17 1971

I hereby certify that I have surveyed and platted the property described on this plat as SALLY APPELBAUM ADDITION; that this plat is a correct representation of said survey; that all distances are correctly shown on said plat in feet and decimals of a foot; that all monuments have been correctly placed in the ground as shown on said plat; that the outside boundary lines are designated on said plat; and there are no wet lands or public highways to be designated on said plat other than as shown thereon.

Harry S. Johnson
 Harry S. Johnson
 Land Surveyor Minn. Reg. No. 5065

State of Minnesota The above certificate was subscribed and sworn to before me, a Notary Public, within and for said County and State on this 26 day of January A.D. 1968.

Patricia E. O'Connor
 Notary Public, Yellow Medicine County, Minnesota
 My Commission Expires July 31, 1974

The annexed plat of SALLY APPELBAUM ADDITION was approved and accepted by the City Council of Bloomington, Minnesota, at a regular meeting thereof, held this 18th day of March A.D. 1968.

City Council of Bloomington, Minnesota
 By Shane Thomas Mayor
 By John A. Pelgen Manager

The boundaries of this plat and the boundaries of the block therein have been mathematically checked and approved. No determination has been made to ascertain that the legal description agrees with said plat.

Dated this _____ day of _____ A.D. 1968

By Elmer J. Peterson, Hennepin County Surveyor

Scale: 1 inch = 50 feet
 • Denotes Iron Monument
 Bearings are assumed

LAND SURVEYORS
Harry S. Johnson Associates INC.