

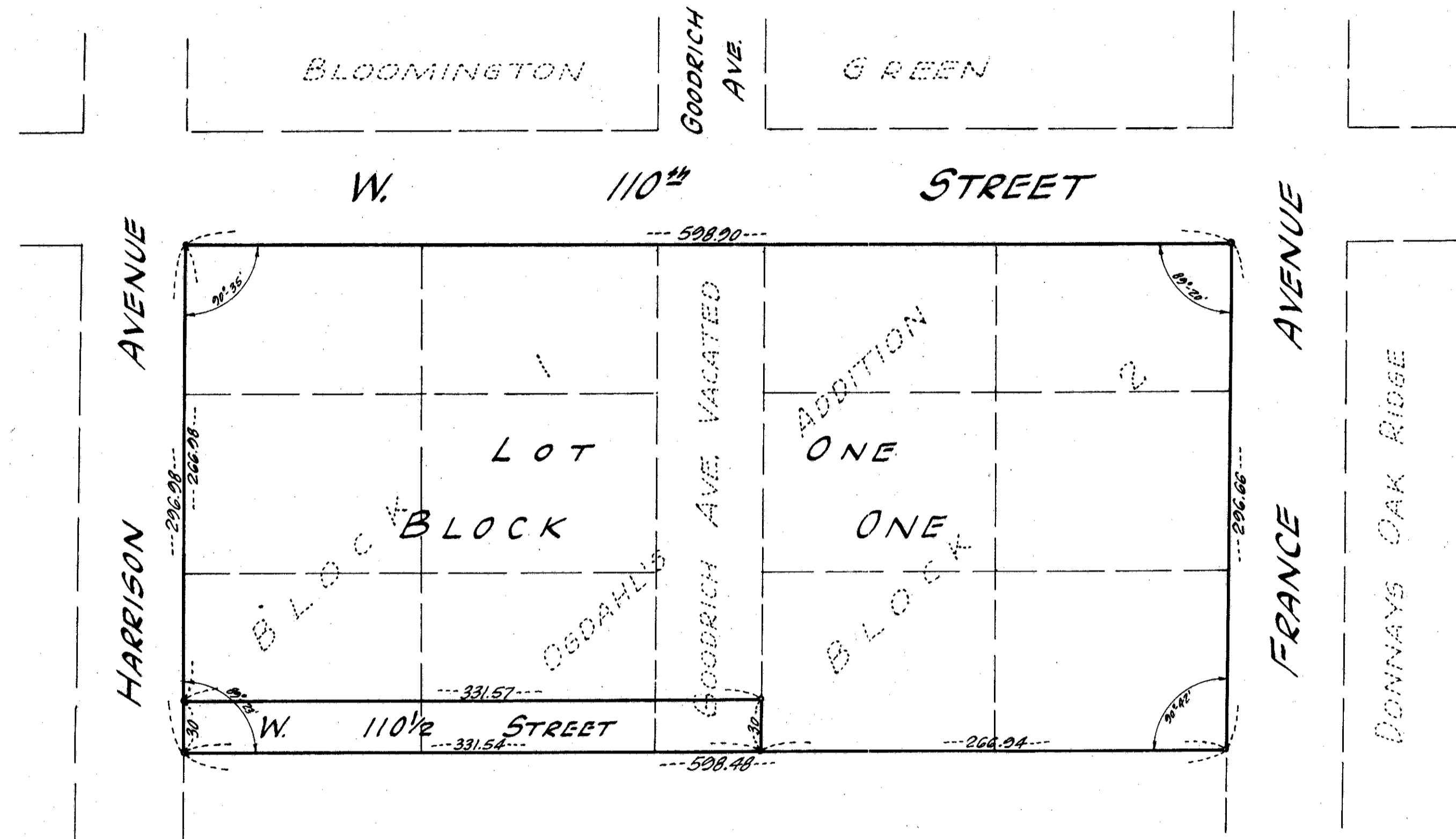
REPLAT OF OGDahl'S ADDITION

HENNEPIN COUNTY, MINNESOTA

January, 1958

EGAN, FIELD & NOWAK
SURVEYORS

o Denotes Iron Monument



Scale: 1"=60'

Know all men by these presents that the Evangelical Lutheran Church of the Transfiguration, Bloomington, Minnesota, a Minnesota Corporation, owners and proprietors of the following described property situate in the State of Minnesota and County of Hennepin towit: Lots 1, 2, 3, 4, 5 and 6, Block 1 and Lots 1, 2, 3, 4, 5 and 6, Block 2, all in OGDahl'S ADDITION. Also that portion of Goodrich Avenue as laid out and platted in the plat of OGDahl'S ADDITION. Have caused the same to be surveyed and platted as REPLAT OF OGDahl'S ADDITION and do hereby donate and dedicate to the public for public use forever the street as shown on the annexed plat. In witness whereof said Evangelical Lutheran Church of the Transfiguration, Bloomington, Minnesota, has caused these presents to be signed by its proper officers and its corporate seal to be hereunto affixed this _____ day of _____ A.D. 1958.

In presence of: EVANGELICAL LUTHERAN CHURCH OF THE TRANSFIGURATION, BLOOMINGTON, MINNESOTA
 by _____ its president
 Benjamin O. Leonard
 by _____ its vice president
 Ronald W. Johnson

STATE OF MINNESOTA)
 COUNTY OF HENNEPIN) S.S. On this _____ day of _____ A.D. 1958, before me a Notary Public, personally appeared Benjamin O. Leonard and Ronald W. Johnson, to me personally known who by me each duly sworn did say that they are respectively President and Vice President of the Evangelical Lutheran Church of the Transfiguration, Bloomington, Minnesota, the corporation named in the foregoing instrument, that the corporate seal affixed to said instrument is the corporate seal of said corporation and that said instrument was signed and sealed in behalf of said corporation by authority of its Board of Directors and said Benjamin O. Leonard and Ronald W. Johnson acknowledged said instrument to be the free act and deed of said corporation.

Notary Public, Hennepin County, Minnesota
 My Commission Expires _____

I hereby certify that I have surveyed and platted the property described on this plat as REPLAT OF OGDahl'S ADDITION; that this plat is a correct representation of said survey; that all distances are correctly shown on the plat in feet and decimals of a foot; that the monuments for guidance of future surveys are correctly placed in the ground as shown on the plat; that the outside boundary lines are correctly designated on the plat; that the topography of the land is correctly shown on the plat and that there are no wet lands or public highways to be designated on said plat other than as shown thereon.

Surveyor-Minnesota Registration No. 2264

STATE OF MINNESOTA)
 COUNTY OF HENNEPIN) S.S. Above certificate subscribed and sworn to before me, a Notary Public, this _____ day of _____ A.D. 1958.

Arthur E. Ostlund
 Notary Public, Hennepin County, Minnesota
 My Commission expires October 23, 1960.

The foregoing plat of REPLAT OF OGDahl'S ADDITION was approved and accepted by the Village Council of Bloomington, Minnesota at a regular meeting thereof held this _____ day of _____ A.D. 1958.
 VILLAGE COUNCIL OF BLOOMINGTON, MINNESOTA
 by _____ its Mayor
 by _____ its Clerk

Checked and approved this 10th day of February A.D. 1958.
 Howard W. Perkins, By Charles J. Peterson, Deputy
 Hennepin County Surveyor