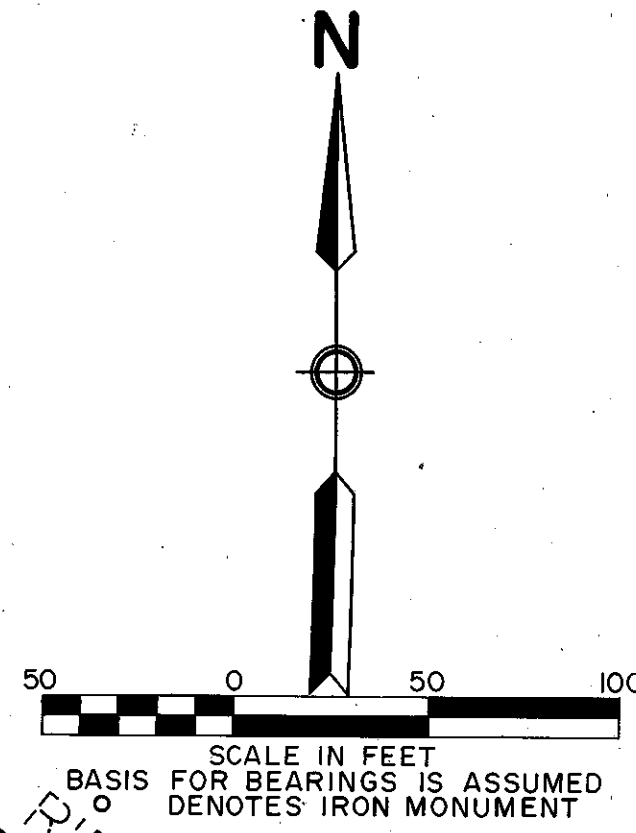
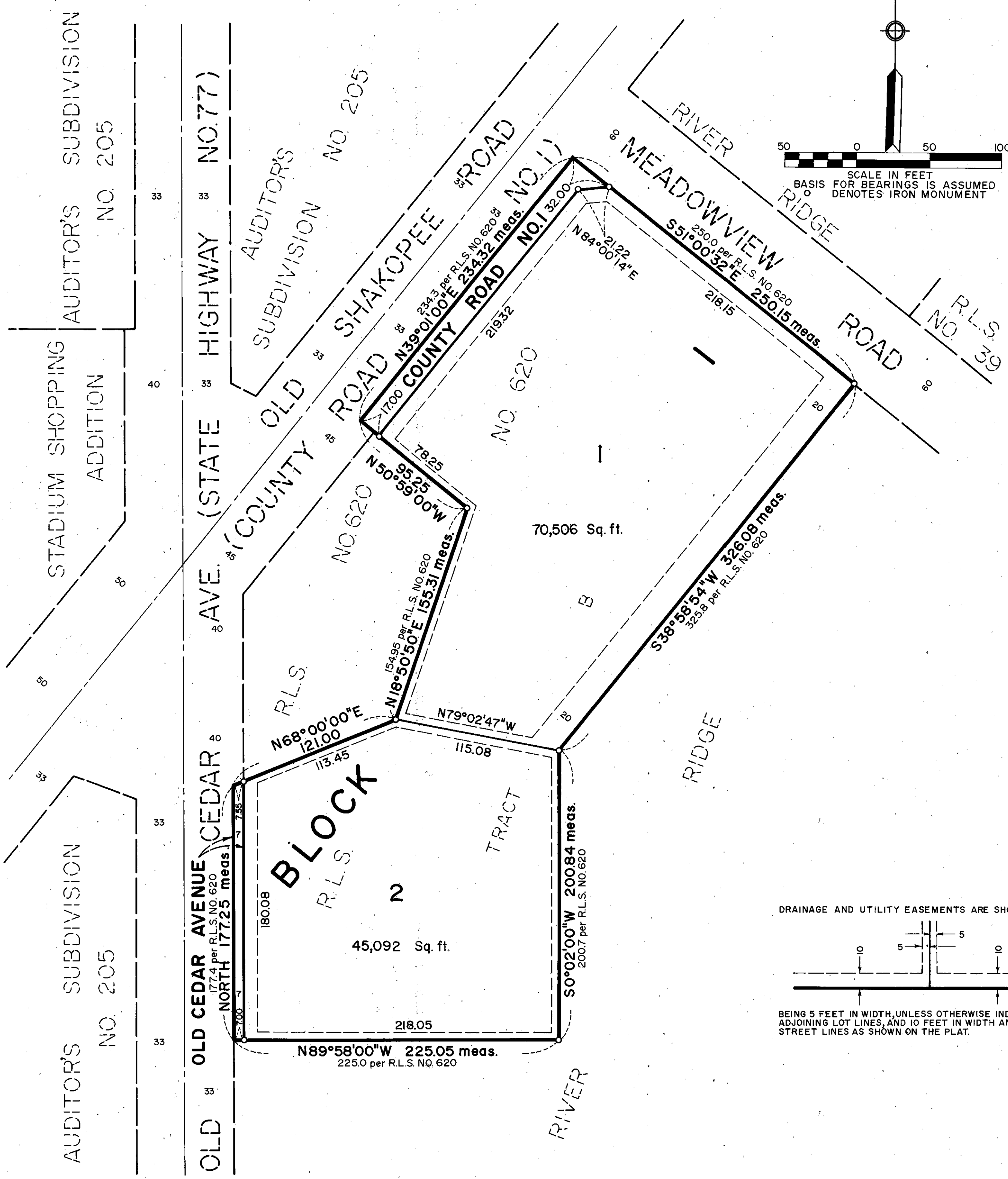


REM ADDITION



KNOW ALL MEN BY THESE PRESENTS: That Union Oil Company of California, a California Corporation, owner and proprietor of the following described property situated in the County of Hennepin, State of Minnesota to wit:

Tract B, Registered Land Survey No. 620, Files of Registrar of Titles, County of Hennepin.

Has caused the same to be surveyed and platted as REM ADDITION and does hereby donate and dedicate to the public, for public use forever the road, avenue and drainage and utility easements as shown on said plat.

In witness whereof said Union Oil Company of California, a California Corporation, has caused these presents to be signed by its proper officers and its corporate seal to be hereunto affixed this 12TH day of SEPTEMBER 1980.

SIGNED: Al Arnold its Vice President Ray Bryntesen its Asst. Secretary RSE
STATE OF ILLINOIS
COUNTY OF COOK

The foregoing instrument was acknowledged before me this 12TH day of SEPTEMBER 1980 by S. A. ARNOLD its VICE PRESIDENT and ROY BRYNTESEN its ASSISTANT SECRETARY of said Union Oil Company of California, a California Corporation, on behalf of said corporation.

Sherill S. Mangels SHERRILL S. MANGELS
Notary Public, COOK County, ILLINOIS
My Commission Expires AUGUST 26, 1984

I hereby certify that I have surveyed and platted the property described on this plat as REM ADDITION; that this plat is a correct representation of said survey; that all distances are correctly shown on said plat in feet and hundredths of a foot; that all monuments have been correctly placed in the ground as shown on said plat; that the outside boundary lines are correctly designated on said plat; and that there are no wetlands to be designated on said plat.

Edward H. Sunde
Edward H. Sunde, Land Surveyor
Minnesota Registration No. 8612

STATE OF MINNESOTA
COUNTY OF HENNEPIN

The foregoing instrument was acknowledged before me this 4TH day of SEPTEMBER 1980 by Edward H. Sunde, Land Surveyor.

JOHN K. BARNES
NOTARY PUBLIC - MINNESOTA
HENNEPIN COUNTY
My commission expires SEPT. 18, 1985

John K. Barnes
Notary Public, HENNEPIN County, Minnesota
My Commission Expires SEPT. 18, 1985

BLOOMINGTON, MINNESOTA

The plat of REM ADDITION was approved and accepted by the City Council of the City of Bloomington, Minnesota at a regular meeting thereof, held this day of _____ 1980.

CITY COUNCIL OF BLOOMINGTON, MINNESOTA
BY: _____ its Mayor
BY: _____ its Manager.

PROPERTY TAXATION DEPT., Hennepin County, Minnesota
I hereby certify that there are no delinquent taxes for all years prior to 1980 for land described on this plat dated this _____ day of _____ 1980.

Vernon T. Hoppe, Director
SURVEY DIVISION, Hennepin County, Minnesota
BY: _____ Tax Clerk

Pursuant to Chapter 810, Minnesota Laws of 1969, this plat has been approved this _____ day of _____ 1980.

Robert L. Bakka, Hennepin County Surveyor
REGISTRAR OF TITLES, Hennepin County, Minnesota
BY: _____

I hereby certify that the within plat of REM ADDITION was filed for record in this office this _____ day of _____ 1980 at _____ o'clock _____ M.

R. Dan Carlson, Registrar of Titles
BY: _____ Deputy

