

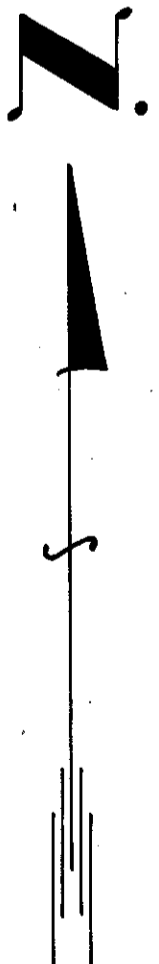
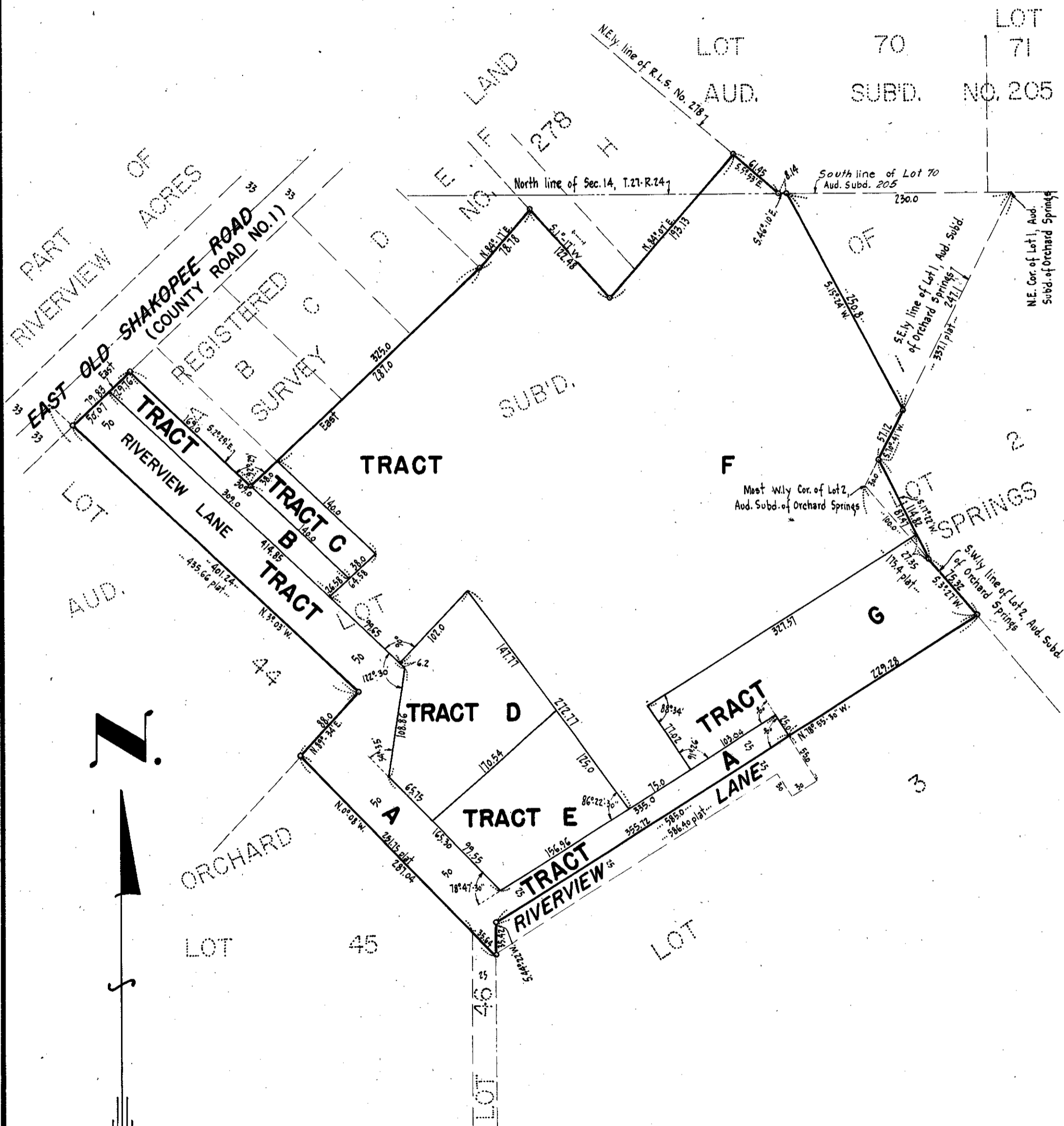
# REGISTERED LAND SURVEY NO. 442

HENNEPIN COUNTY, MINNESOTA

**RLS-442**

GEORGE E. HOPKINS  
CIVIL ENGINEER & SURVEYOR

○ DENOTES IRON MONUMENT



SCALE: 1" = 100'

SHEET 2 OF 2 SHEETS