

REGISTERED LAND SURVEY NO. 1010

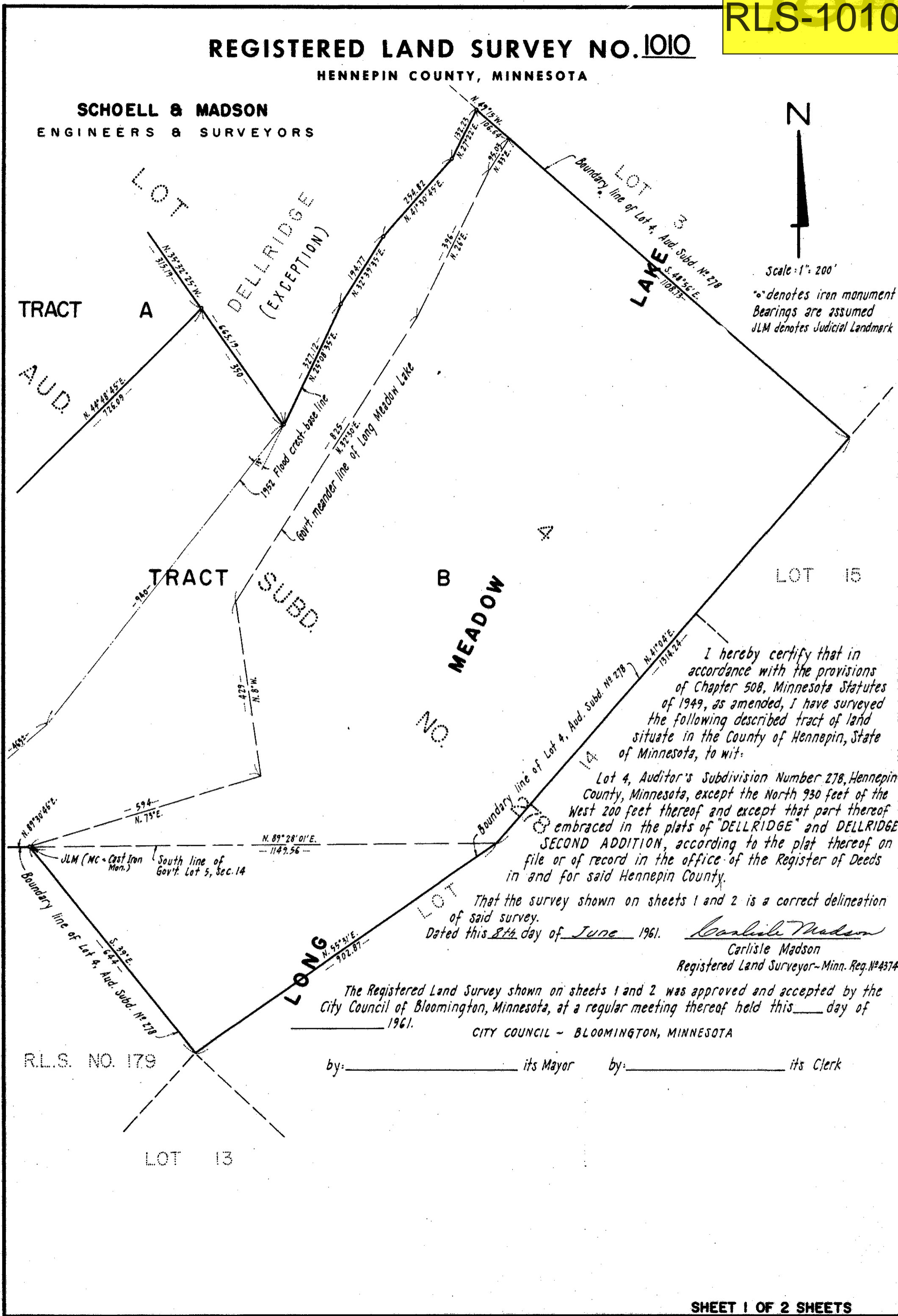
HENNEPIN COUNTY, MINNESOTA

SCHOELL & MADSON
ENGINEERS & SURVEYORS



Scale: 1" = 200'

* denotes iron monument
Bearings are assumed
JLM denotes Judicial Landmark



I hereby certify that in accordance with the provisions of Chapter 508, Minnesota Statutes of 1949, as amended, I have surveyed the following described tract of land situate in the County of Hennepin, State of Minnesota, to wit:

Lot 4, Auditor's Subdivision Number 278, Hennepin County, Minnesota, except the North 930 feet of the West 200 feet thereof and except that part thereof embraced in the plats of "DELLRIDGE" and DELLRIDGE SECOND ADDITION, according to the plat thereof on file or of record in the office of the Register of Deeds in and for said Hennepin County.

That the survey shown on sheets 1 and 2 is a correct delineation of said survey.

Dated this 8th day of June 1961.

Carlisle Madson
Carlisle Madson
Registered Land Surveyor - Minn. Reg. No. 4374

The Registered Land Survey shown on sheets 1 and 2 was approved and accepted by the City Council of Bloomington, Minnesota, at a regular meeting thereof held this _____ day of _____ 1961.

CITY COUNCIL - BLOOMINGTON, MINNESOTA

by: _____ its Mayor by: _____ its Clerk

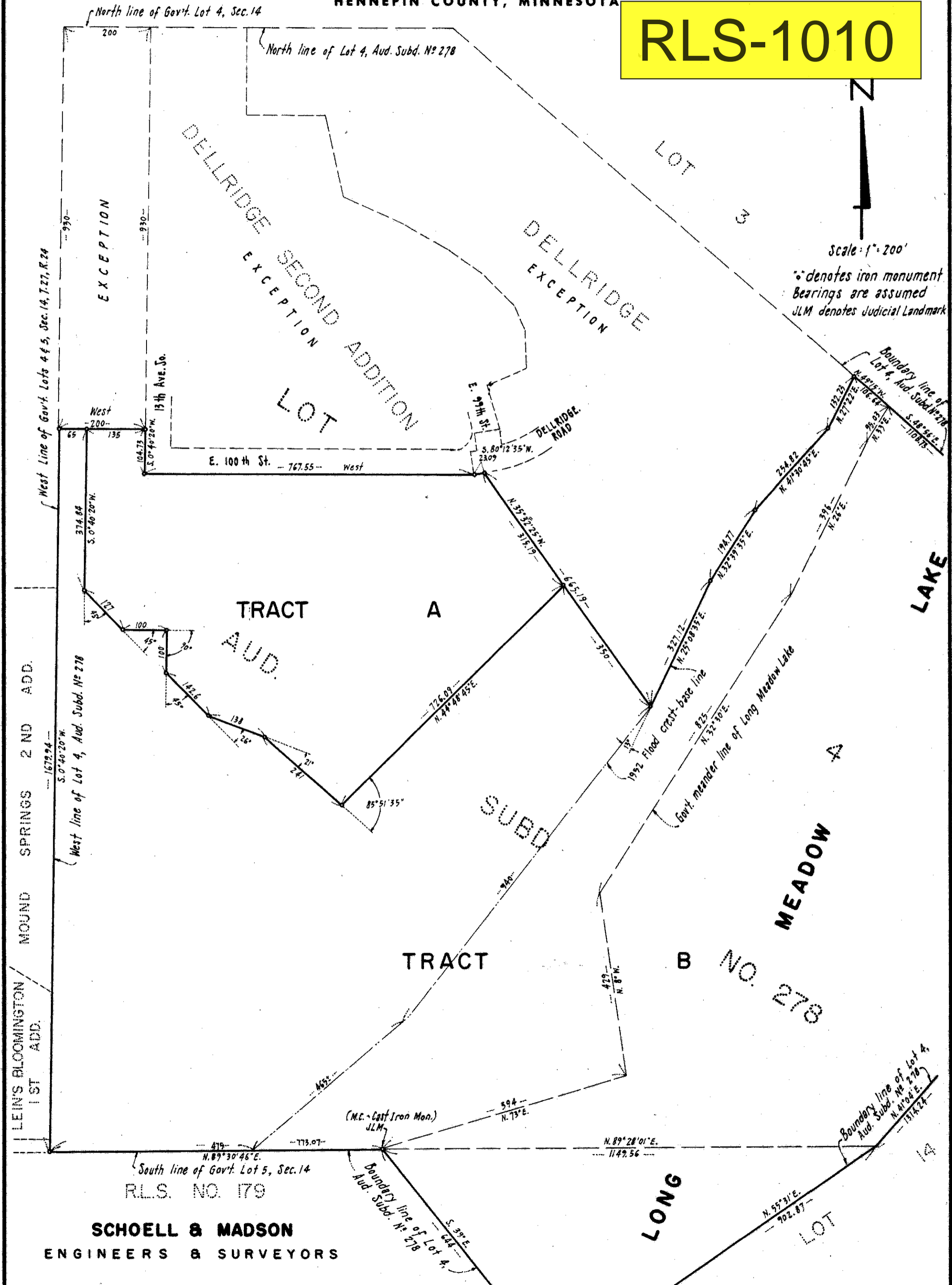
R.L.S. NO. 179

1010

REGISTERED LAND SURVEY NO. 1010

HENNEPIN COUNTY, MINNESOTA

RLS-1010



SCHOELL & MADSON ENGINEERS & SURVEYORS