

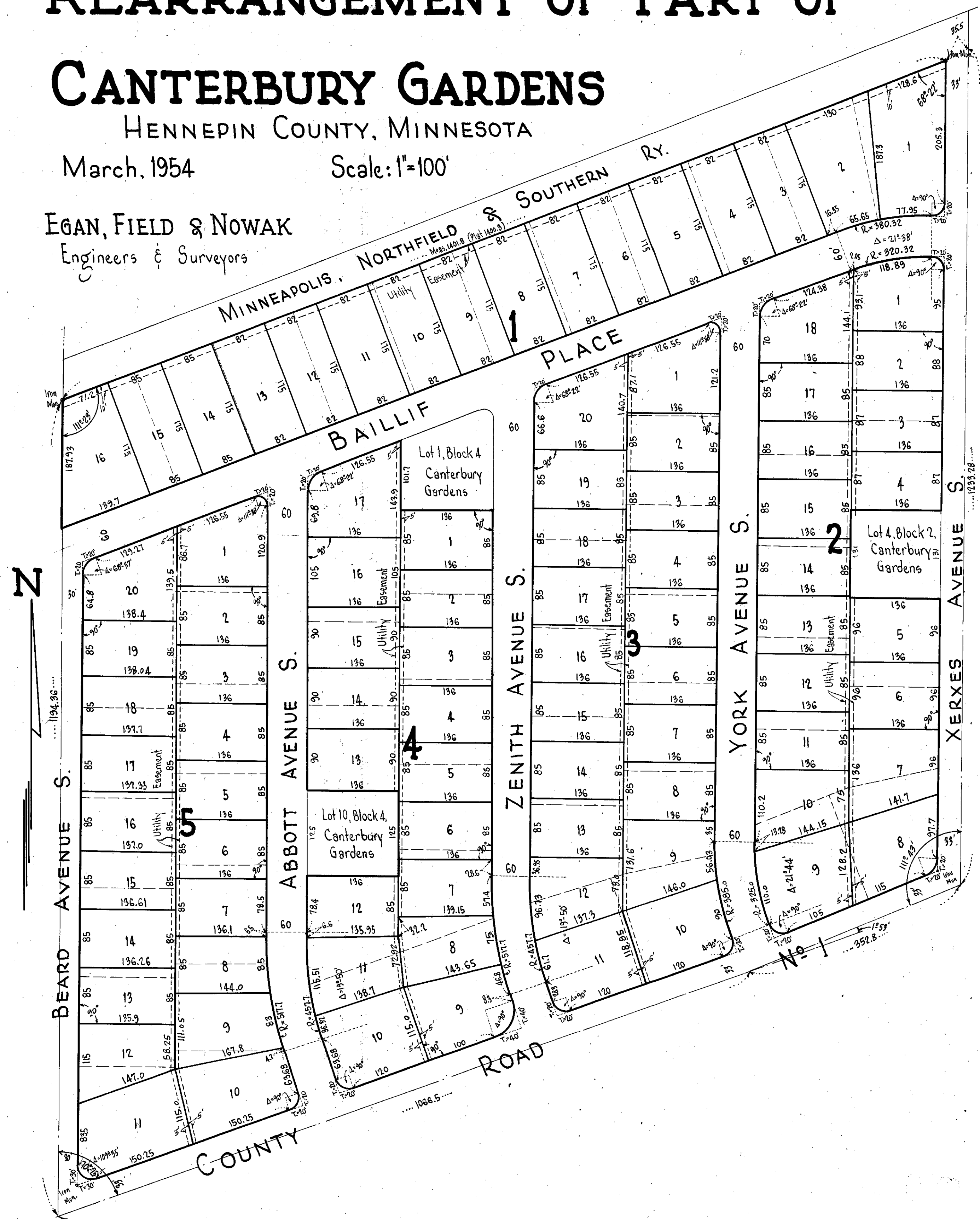
REARRANGEMENT OF PART OF CANTERBURY GARDENS

HENNEPIN COUNTY, MINNESOTA

March, 1954

Scale: 1"=100'

EGAN, FIELD & NOWAK
Engineers & Surveyors



KNOW ALL MEN BY THESE PRESENTS:- that Jewson Realty Company, a Minnesota corporation, owner and proprietor of the following described property situate in the State of Minnesota and County of Hennepin to-wit:- All of Block 1, all of Block 2, except Lot 4, all of Block 3, all of Block 4, except Lots 1 and 10, and all of Block 5, Canterbury Gardens, Hennepin County, Minnesota. Has caused the same to be surveyed and platted as REARRANGEMENT OF PART OF CANTERBURY GARDENS", and does hereby donate and dedicate to the public for public use forever the Place and Avenues as shown on the annexed plat. Also subject to Utility easements as shown on the annexed plat for use of municipality or other public utilities, for installation and maintenance of facilities installed in or over said easements to serve adjacent or other premises in the vicinity. In witness whereof, said Jewson Realty Company has caused these presents to be signed by its proper officers and its corporate seal to be hereunto affixed this _____ day of _____ A.D. 1954.

In Presence of:-

Signed:-

JEWSON REALTY COMPANY

_____ } As to F. Frank Jewson
 _____ } and Grace St. Martin Jewson

by _____ its President
 by _____ its Vice President

STATE OF MINNESOTA } S.S. On this _____ day of _____ A.D. 1954, before me, a Notary Public, within and for
 COUNTY OF HENNEPIN } said County, personally appeared F. Frank Jewson and Grace St. Martin Jewson to me personally known, who being
 by me duly sworn, did say that they are respectively President and Vice President of the Jewson Realty Company, the
 corporation named in the foregoing instrument, that the seal affixed to said instrument is the corporate seal of said
 corporation and that said instrument was signed and sealed in behalf of said corporation by authority of its Board of
 Directors and said F. Frank Jewson and Grace St. Martin Jewson acknowledged said instrument to be the free act and
 deed of said corporation.

Notary Public, Hennepin County, Minnesota
 My Commission Expires _____

STATE OF MINNESOTA } S.S. I hereby certify that I have surveyed and platted the property described on this plat as
 COUNTY OF HENNEPIN } REARRANGEMENT OF PART OF CANTERBURY GARDENS" that this plat is a correct representation of said survey; that all
 distances are correctly shown on the plat in feet and decimals of a foot; that the monuments for guidance of future
 surveys have been correctly placed in the ground as shown on the plat; that the outside boundary lines are correctly
 designated on the plat; that the topography of the land is correctly shown on the plat and that there are no wet lands or
 public highways to be designated on said plat other than as shown thereon.

Surveyor- Minn. Reg. No 2264

Above certificate subscribed and sworn to before me this _____ day of _____ A.D. 1954.

Notary Public, Hennepin County, Minnesota
 My Commission Expires _____

The annexed plat of REARRANGEMENT OF PART OF CANTERBURY GARDENS" was approved and accepted by the Village Council
 of Bloomington, Minnesota, at a regular meeting thereof held this _____ day of _____ A.D. 1954.

VILLAGE COUNCIL OF BLOOMINGTON, MINNESOTA

by _____ its Mayor
 by _____ its Clerk

Checked and approved this _____ day of _____

A.D. 1954.

Hennepin County, Surveyor