

R-666

C.R. DOC. NO.

RANDI LANDING

KNOW ALL MEN BY THESE PRESENTS: That Jeffrey G. Hansen and Patrice M. Hansen, husband and wife, owner and proprietor and Community State Bank of Bloomington, a Minnesota Corporation, mortgage and The Housing and Redevelopment Authority in and for the City of Bloomington, Minnesota, a Public Body Corporate, mortgagee of the following described property situated in the County of Hennepin, State of Minnesota, to wit:

LOT 27, AUDITOR'S SUBDIVISION NO. 205, HENNEPIN COUNTY, MINNESOTA, ACCORDING TO THE PLAT THEREOF ON FILE AND OF RECORD IN THE OFFICE OF THE COUNTY RECORDER, HENNEPIN COUNTY, MINNESOTA.

Have caused the same to be surveyed and platted as RANDI LANDING and do hereby donate and dedicate to the public for public use forever the street and easements as shown on this plat for drainage and utility purposes only. In witness whereof said Jeffrey G. Hansen and Patrice M. Hansen have hereunto set their hands this 27th day of AUGUST, 1985; In witness whereof said Community State Bank of Bloomington, a Minnesota Corporation, has caused these presents to be signed by its proper officers this 27th day of AUGUST, 1985; In witness whereof said The Housing and Redevelopment Authority in and for the City of Bloomington, a Public Body Corporate, has caused these presents to be signed by its proper officer this _____ day of _____, 19____.

Jeffrey G. Hansen
Jeffrey G. Hansen

Patrice M. Hansen
Patrice M. Hansen

COMMUNITY STATE BANK OF BLOOMINGTON

George Hayden, VP.
George Hayden, Vice President

Mark J. Frey, Assistant Cashier
Mark J. Frey, Assistant Cashier

THE HOUSING AND REDEVELOPMENT AUTHORITY in and for the CITY OF BLOOMINGTON

Dennis E. Daniels
Dennis E. Daniels, Administrator

STATE OF MINNESOTA COUNTY OF Hennepin The foregoing instrument was acknowledged before me this 27 day of August, 1985, by Jeffrey G. Hansen and Patrice M. Hansen, husband and wife.

Jeffrey M. Stefans
NOTARY PUBLIC - MINNESOTA
SCOTT COUNTY
My Commission Expires Sept. 18, 1990

Jeffrey M. Stefans
Notary Public Hennepin County, Minnesota
My Commission Expires 9-18-90

STATE OF MINNESOTA COUNTY OF Hennepin The foregoing instrument was acknowledged before me this 27 day of August, 1985, by George G. Hayden, Vice President and Mark J. Frey, Assistant Cashier of the Community State Bank of Bloomington, a Minnesota Corporation, on behalf of the corporation.

Jeffrey M. Stefans
NOTARY PUBLIC - MINNESOTA
SCOTT COUNTY
My Commission Expires Sept. 18, 1990

Jeffrey M. Stefans
Notary Public Hennepin County, Minnesota
My Commission Expires 9-18-90

STATE OF MINNESOTA COUNTY OF Hennepin The foregoing instrument was acknowledged before me this 5th day of SEPTEMBER, 1985, by DENNIS E. DANIELS, Administrator of The Housing and Redevelopment Authority in and for the City of Bloomington, Minnesota, a Public Body Corporate, on behalf of the Corporation.

Regina Harris
NOTARY PUBLIC - MINNESOTA
HENNEPIN COUNTY
My Commission Expires Oct. 10, 1986

Regina Harris
Notary Public Hennepin County, Minnesota
My Commission Expires 10-10-86

I hereby certify that I have surveyed and platted the property described on this plat as RANDI LANDING, that this plat is a correct representation of the survey, that all distances are correctly shown on the plat in feet and hundredths of a foot, that all monuments have been correctly placed in the ground as shown, that the outside boundary lines are correctly designated on the plat and that there are no wetlands to be designed on this plat.

Robert B. Sikich
Robert B. Sikich, Land Surveyor
Minnesota License No. 14891

STATE OF MINNESOTA COUNTY OF Dakota The foregoing Surveyor's Certificate was acknowledged before me this 27th day of August, 1985, by Robert B. Sikich, Minnesota License No. 14891.

Josephine A. Stertz
NOTARY PUBLIC - MINNESOTA
DAKOTA COUNTY
My Commission Expires Feb. 10, 1991

Josephine A. Stertz
Notary Public, Dakota County, Minnesota

BLOOMINGTON, MINNESOTA

This plat of RANDI LANDING was approved and accepted by the City Council of Bloomington, Minnesota at a regular meeting thereof held this 5th day of August, 1985. If applicable, the written comments and recommendations of the Commissioner of Transportation and the County Highway Engineer have been received by the City or the prescribed 30 day period has elapsed without receipt of such comments and recommendations, as provided by Minn. Statutes, Section 505.03, Subd. 2.

CITY COUNCIL OF BLOOMINGTON, MINNESOTA

James H. Linden, Mayor John G. Poljan, Manager

PROPERTY TAX AND PUBLIC RECORDS DEPARTMENT, HENNEPIN COUNTY, MINNESOTA

I hereby certify that taxes payable in _____ and prior years have been paid for land described on this plat. Dated this _____ day of _____, 19____.

DALE G. FOLSTAD, Hennepin County Auditor, By _____, Deputy

SURVEY DIVISION, HENNEPIN COUNTY, MINNESOTA

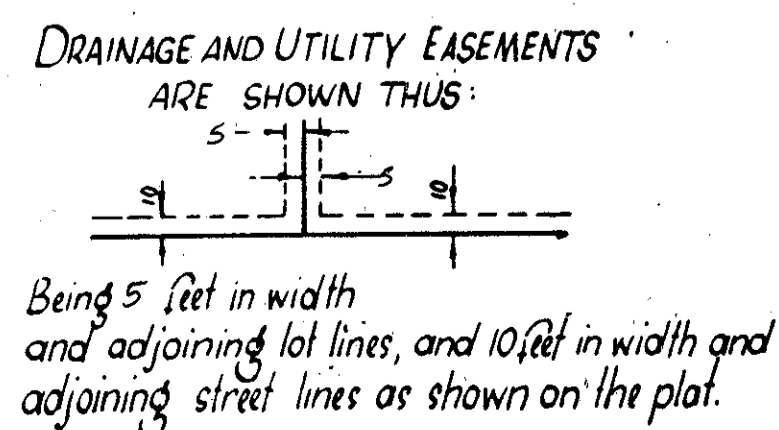
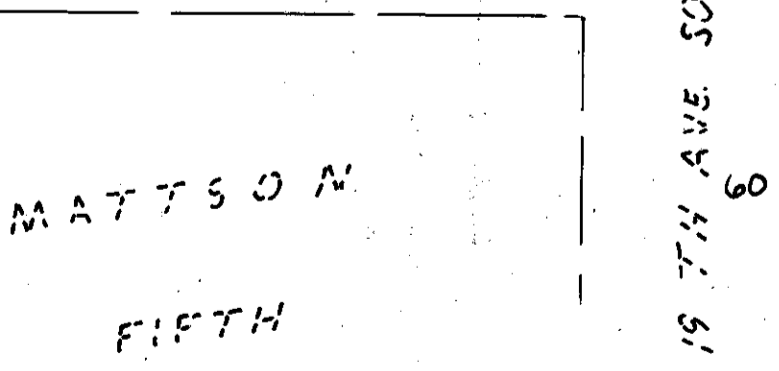
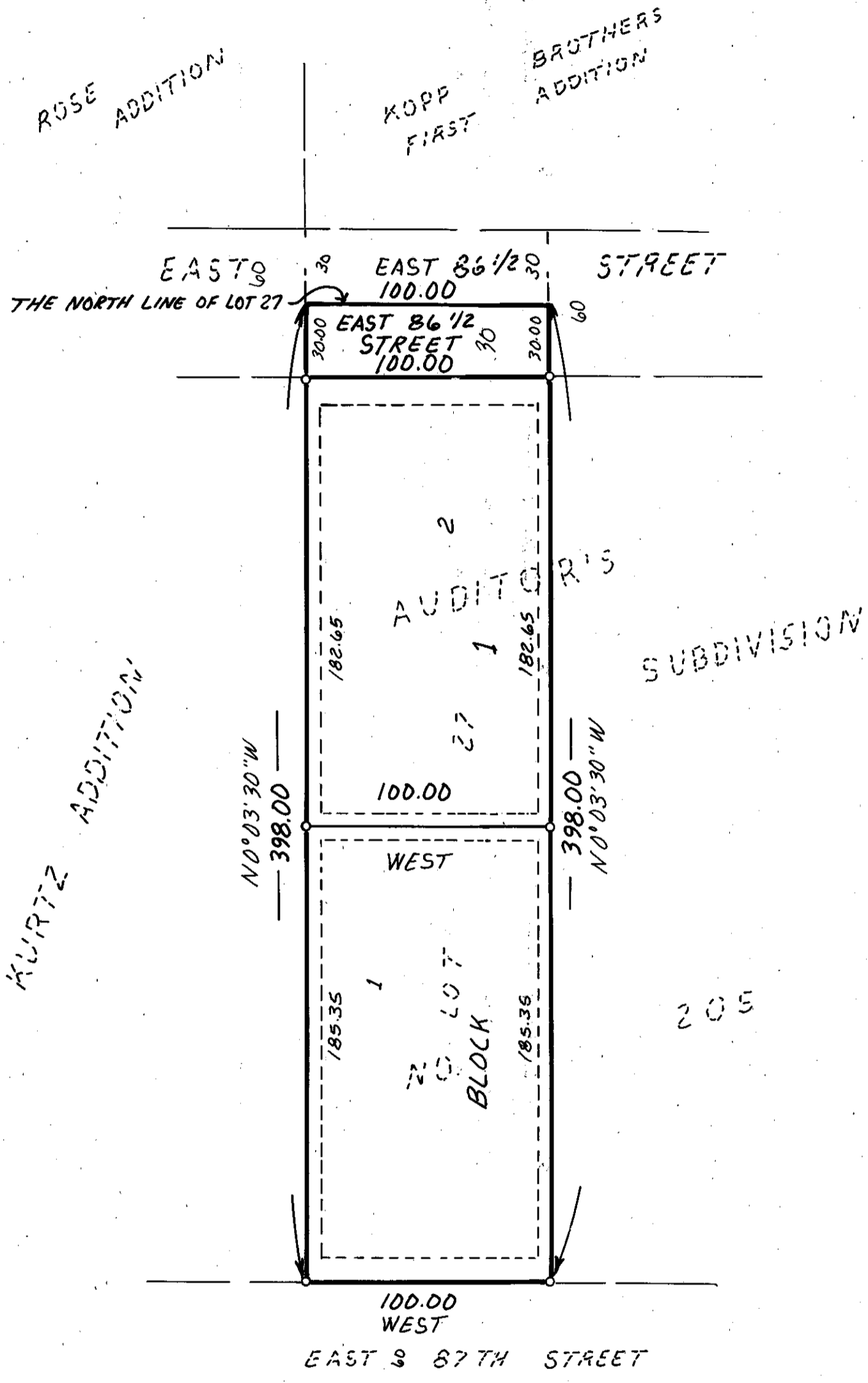
Pursuant to Chapter 810, Minnesota Laws of 1969, this plat has been approved this _____ day of _____, 19____.

ROBERT L. BAKKA, Hennepin County Surveyor, By _____

COUNTY RECORDER, HENNEPIN COUNTY, MINNESOTA

I hereby certify that the within plat of RANDI LANDING was filed for record in this office this _____ day of _____, 19____, at _____ o'clock _____ M.

R. Dan Carlson, County Recorder, by _____, Deputy



BEARINGS SHOWN ARE ASSUMED

○ DENOTES 1/2 INCH BY 14 INCH IRON MONUMENT.

