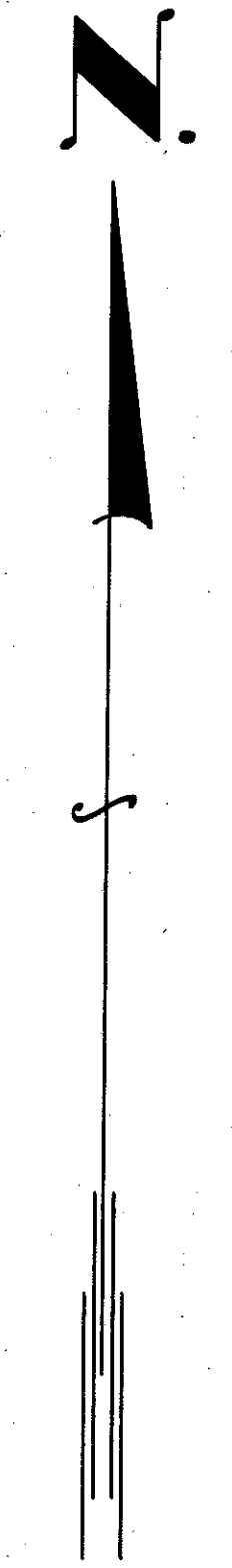


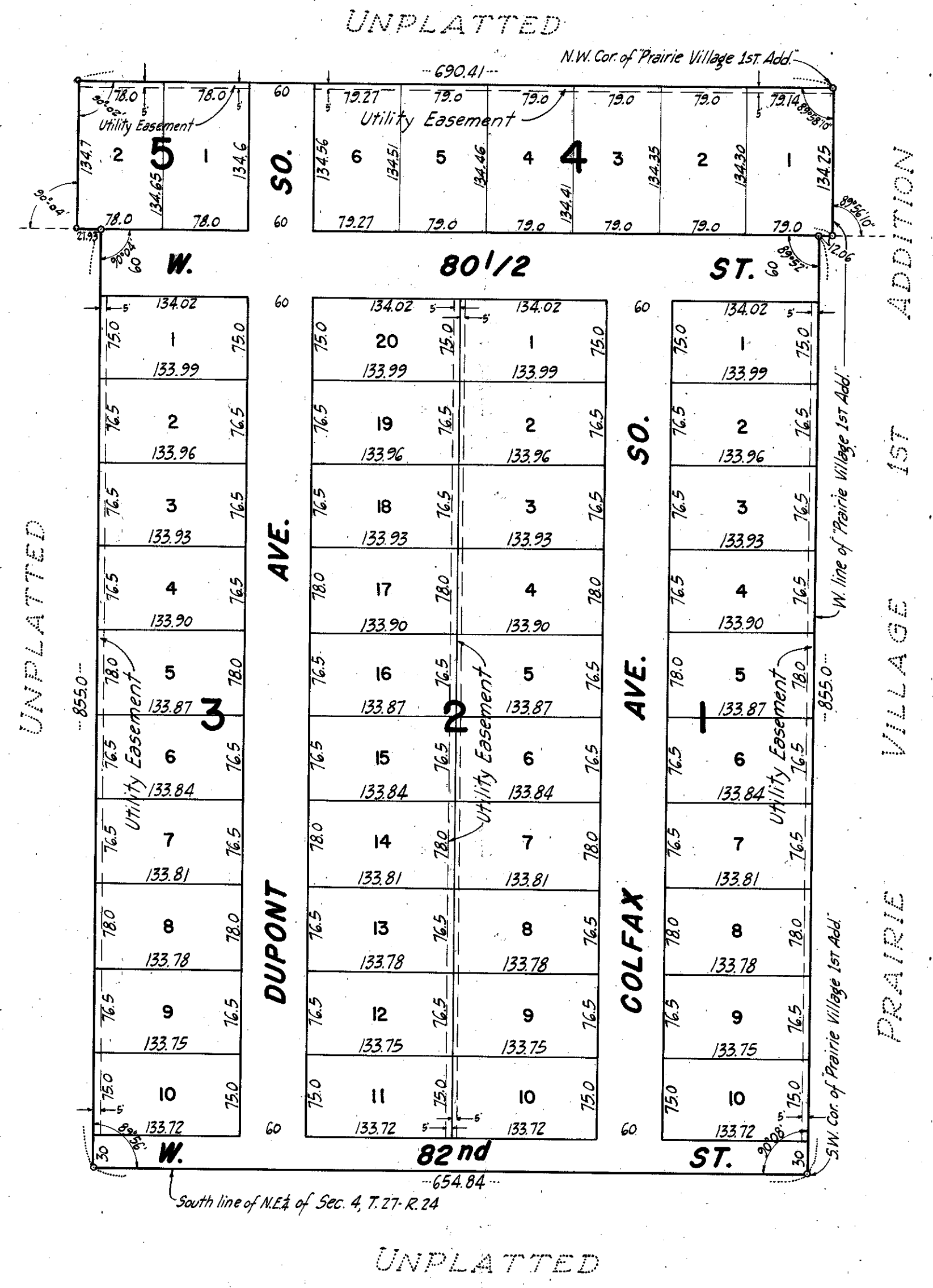
PRAIRIE VILLAGE 2ND ADDITION

HENNEPIN COUNTY, MINNESOTA

• DENOTES IRON MONUMENT



SCALE: 1"=100'



KNOW ALL MEN BY THESE PRESENTS: That the Coffman Realty Company, a Minnesota Corporation, owner and proprietor of the following property situated in the State of Minnesota and County of Hennepin to-wit:-
 All that part of the Northeast One-quarter (N.E. 1/4) of Section Four (4), Township Twenty-seven (27), Range Twenty-four (24) described as follows; Beginning at the Southwest corner of Prairie Village 1st Addition; thence North along the West line of said addition, a distance of 855.0 feet; thence deflecting to the right 89 degrees and 52 minutes along a line parallel with the South line of said Northeast 1/4, a distance of 12.06 feet; thence deflecting to the left 89 degrees, 56 minutes and 10 seconds a distance of 134.25 feet to the Northwest corner of said addition; thence deflecting to the left 90 degrees, 01 minute and 50 seconds a distance of 690.41 feet; thence deflecting to the left 89 degrees and 58 minutes a distance of 134.7 feet; thence deflecting to the left 89 degrees and 56 minutes along a line parallel with the South line of said Northeast 1/4, a distance of 21.93 feet; thence deflecting to the right 90 degrees and 04 minutes a distance of 855.0 feet to the South line of said Northeast 1/4; thence East along said line 654.84 feet to beginning.
 Have caused the same to be surveyed and platted as PRAIRIE VILLAGE 2ND ADDITION and do hereby donate and dedicate to the public for public use forever the streets and avenues as shown on the annexed plat. Subject to utility easements as shown on the annexed plat.
 In witness whereof, said Coffman Realty Company has caused these presents to be signed by its proper officers and its corporate seal to be hereunto affixed this _____ day of _____, 1953.

In the Presence of:-
 _____ as to W.D. Coffman & Meredith R. Coffman
 _____ as to W.D. Coffman & Meredith R. Coffman
 COFFMAN REALTY COMPANY
 By _____ its President
 By _____ its Secretary & Treasurer

State of Minnesota } s.s.
 County of Hennepin }
 On this _____ day of _____, 1953 before me, a Notary Public, within the said County appeared W.D. Coffman and Meredith R. Coffman, to me personally known, who being each duly sworn, did say that they are respectively President and Secretary Treasurer of Coffman Realty Company, the Corporation named in the foregoing instrument, that the seal affixed to said instrument is the Corporate seal of said Corporation and that said instrument was signed and sealed in behalf of said Corporation by authority of its Board of Directors and said W.D. Coffman and Meredith R. Coffman acknowledged said act to be the free act and deed of said Corporation.

 Notary Public, Hennepin County, Minnesota.
 My Commission Expires: _____

State of Minnesota } s.s.
 County of Hennepin }
 I do hereby certify that I have surveyed and platted the property described on this plat as PRAIRIE VILLAGE 2ND ADDITION, that this plat is a correct representation of said survey; that all distances are correctly shown on the plat in feet and decimals of a foot; that the monuments for guidance of future surveys have been correctly placed in the ground as shown on the plat; that the outside boundary lines are correctly designated on the plat; that the topography of the land is correctly shown on the plat, and that there are no wet lands or public highways to be designated on the plat other than as shown thereon.

 Land Surveyor - Minnesota Reg. No. 3116.

The above certificate subscribed and sworn to before me on this _____ day of _____, 1953.

 Notary Public, Hennepin County, Minnesota.
 My Commission Expires: _____

This plat was approved and accepted by the Planning & Zoning Commission of Bloomington Township, Hennepin County, Minnesota at a regular meeting thereof held this _____ day of _____, 1953.

 Chairman of the Planning & Zoning Commission.

 Secretary of the Planning & Zoning Commission.

This plat was approved and accepted by the Town Board of the Town of Bloomington, Minnesota at a regular meeting thereof held this _____ day of _____, 1953.

 Town Clerk

Annexed plat approved and accepted this _____ day of _____, 1953.

 Town Engineer

Annexed plat approved and accepted this _____ day of _____, 1953.

 Town Attorney

Approved as to form and execution this _____ day of _____, 1953.

 County Surveyor