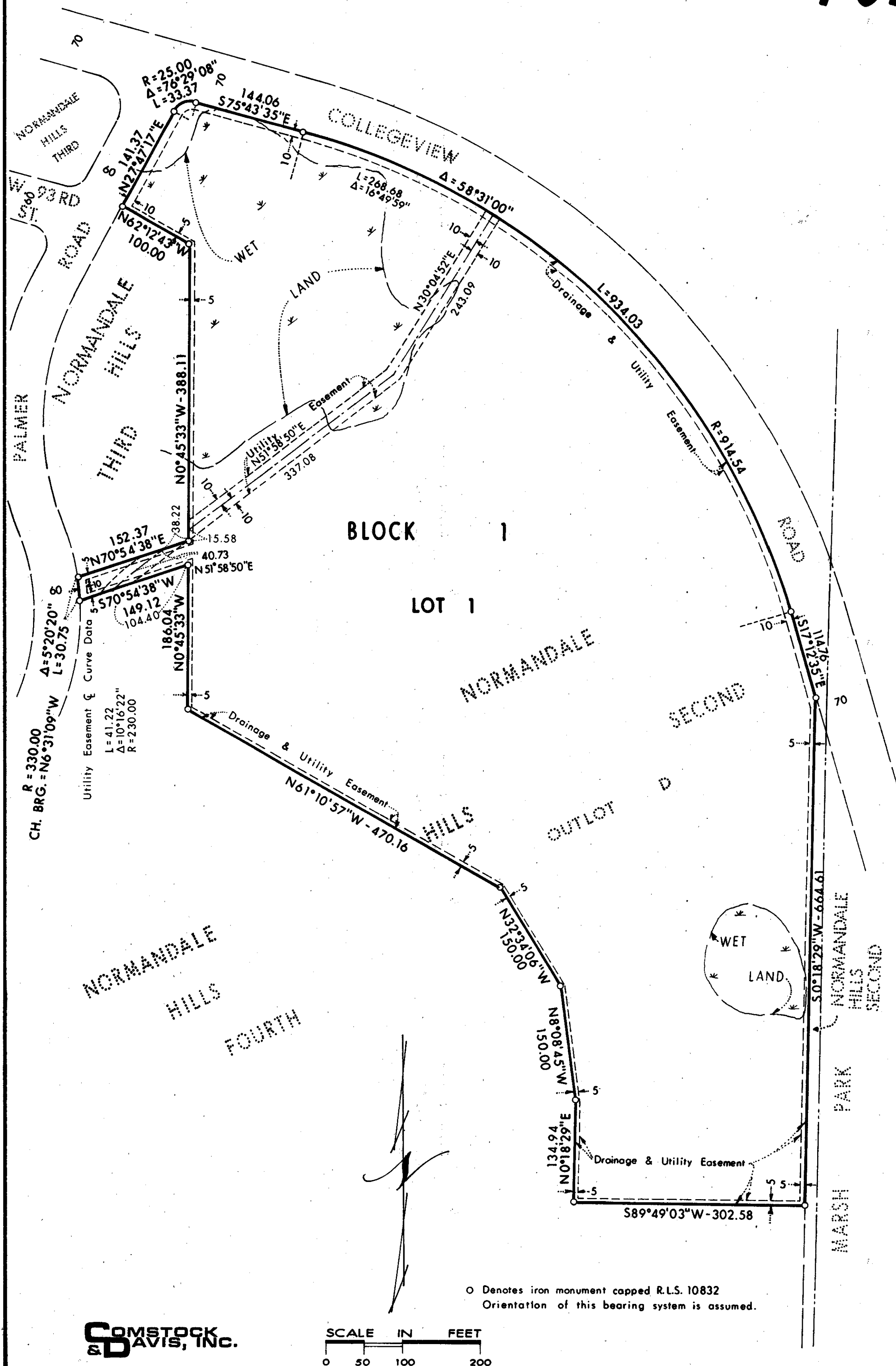


POPLAR BRIDGE

C.R. DOC. NO. _____



KNOW ALL PERSONS BY THESE PRESENTS that Poplar Bridge Associates, a Minnesota general partnership, fee owner, and Marquette Bank Minneapolis, N.A., a National Banking Association, formerly known as F & M Marquette National Bank, and Raymond G. Warmuth, mortgagees of the following described property:

Outlot D, Normandale Hills Second, Hennepin County, Minnesota.
 have caused the same to be surveyed and platted as POPLAR BRIDGE and do hereby donate and dedicate to the public for the public use forever the utility easement and drainage utility easements as shown on the plat. In witness whereof said Poplar Bridge Associates, a Minnesota general partnership, has caused these presents to be signed by its proper partners this 5th day of September, 1985. In witness whereof said Marquette Bank Minneapolis, N.A., a National Banking Association, formerly known as Marquette National Bank has caused these presents to be signed by its proper officers and its corporate seal to be hereunto affixed this 5th day of September, 1985. In witness of said Raymond G. Warmuth has hereunto set his hand this 5th day of September, 1985.

POPLAR BRIDGE ASSOCIATES
Duane H. Dietrich
 Duane H. Dietrich, Managing General Partner
Raymond Dykema
 Raymond Dykema, General Partner
 MARQUETTE BANK MINNEAPOLIS, N.A.
David W. Johnston Its Vice President
Dale R. Jorgensen Its Vice President
Raymond G. Warmuth
 Raymond G. Warmuth

STATE OF MINNESOTA
 COUNTY OF Hennepin
 The foregoing instrument was acknowledged before me this 5th day of September, 1985, by Duane H. Dietrich, its Managing Partner and Raymond Dykema, a general partner, partners of Poplar Bridge Associates, a Minnesota general partnership, on behalf of said partnership.

STATE OF MINNESOTA
 COUNTY OF Hennepin
 The foregoing instrument was acknowledged before me this 9th day of September, 1985, by David W. Johnston its Vice President and Dale R. Jorgensen its Vice President of Marquette Bank Minneapolis, N.A., a National Banking Association, formerly known as F & M Marquette National Bank on behalf of the Association.

STATE OF MINNESOTA
 COUNTY OF Anoka
 The foregoing instrument was acknowledged before me this 5 day of September, 1985, by Raymond G. Warmuth.
Lisa Ann Warmuth
 Lisa Ann Warmuth, County, Minnesota
 My Commission Expires April 25, 1991

I hereby certify that I have surveyed and platted the property described on this plat as POPLAR BRIDGE; that this plat is a correct representation of said survey; that all distances are correctly shown in feet and hundredths of a foot; that all monuments have been correctly placed in the ground as shown; that the outside boundary lines are correctly designated on the plat.
Ron Murphy
 Ron Murphy, Licensed Land Surveyor
 Minnesota License No. 10832

STATE OF MINNESOTA
 COUNTY OF Anoka
 The Surveyor's Certificate was acknowledged before me, a Notary Public, this 28th day of August, 1985.
Dale G. Folstad
 Dale G. Folstad, County, Minnesota
 My Commission Expires March 27, 1991

BLOOMINGTON, MINNESOTA
 This plat of POPLAR BRIDGE was approved and accepted by the City Council of the City of Bloomington, Minnesota, at a regular meeting thereof held this _____ day of _____, 1985. If applicable, the written comments and recommendations of the Commissioner of Transportation and the County Highway Engineer have been received by the City or the prescribed 30 day period has elapsed without receipt of such comments and recommendations, as provided by Minnesota Statutes, Section 505.03, Subdivision 2.

By _____, Mayor By _____, Manager
James H. Lindau John C. Pidgeon
 PROPERTY TAX AND PUBLIC RECORDS DEPARTMENT, HENNEPIN COUNTY, MINNESOTA

I hereby certify that taxes payable in _____ and prior years have been paid for land described on this plat. Dated this _____ day of _____, 1985.

By _____, Deputy
Dale G. Folstad, Hennepin County Auditor
 SURVEY DIVISION, HENNEPIN COUNTY, MINNESOTA

Pursuant to Chapter 810, Minnesota Laws of 1969, this plat has been approved this _____ day of _____, A.D. 1985.
Robert L. Bakka, Hennepin County Surveyor

COUNTY RECORDER, HENNEPIN COUNTY, MINNESOTA
 I hereby certify that the within plat of POPLAR BRIDGE was filed in this office this _____ day of _____, 1985, at _____ o'clock _____ M.

R. Dan Carlson, County Recorder
 By _____, Deputy

