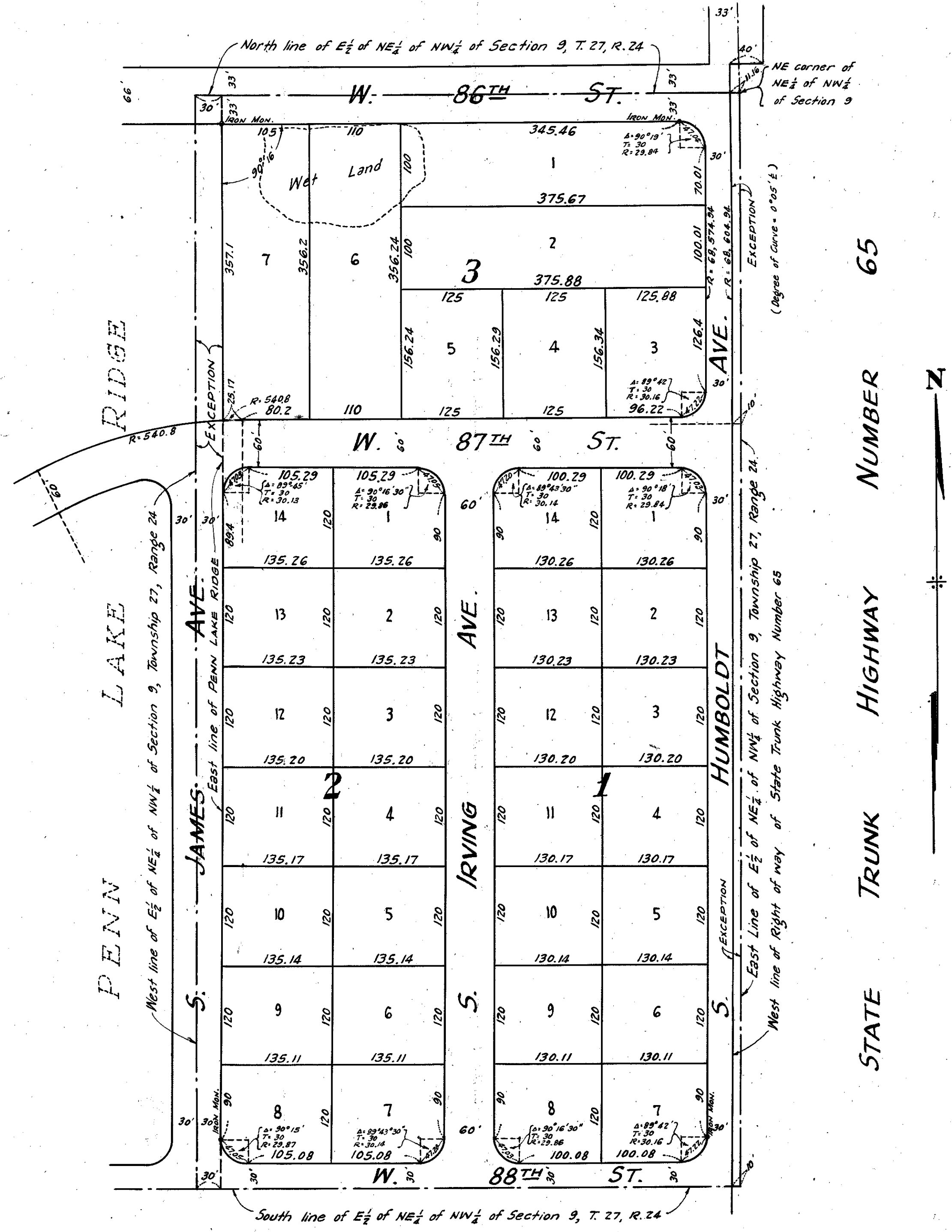


PENN LAKE RIDGE SECOND ADDITION

HENNEPIN COUNTY, MINN.

SCALE: 1"=100' JULY, 1950 EGAN, FIELD & NOWAK
Engineers & Surveyors



STATE TRUNK HIGHWAY NUMBER 65



Know all men by these presents that the Hooper Investment Company, a Minnesota corporation, owner and proprietor, of the following described property situated in the State of Minnesota and County of Hennepin to-wit: The East Half (E½) of the Northeast Quarter (NE¼) of the Northwest Quarter (NW¼) of Section 9, Township 27, Range 24, except the West 30 feet thereof and except that part thereof taken by the State of Minnesota for Highway Purposes; Has caused the same to be surveyed and platted as "PENN LAKE RIDGE SECOND ADDITION" and does hereby donate and dedicate to the public for the public use forever the Streets and Avenues as shown on the annexed plat. In witness, whereof said Hooper Investment Company has caused these presents to be signed by its proper officers and its corporate seal to be hereunto affixed this _____ day of _____ A.D. 1950.

In Presence of:-

_____ } As to
 } J. Stoever Hooper
 } and
 } R. Bruce Hooper

HOOPER INVESTMENT COMPANY
by _____ its President
by _____ its Secretary

State of Minnesota } 5.5. On this _____ day of _____ A.D. 1950, before me, a Notary Public, within and for said County and State personally appeared J. Stoever Hooper and R. Bruce Hooper to me personally known, who being by me duly sworn, did say that they are respectively, the President and the Secretary of the Hooper Investment Company, the corporation named in the foregoing instrument, that the seal affixed to said instrument is the corporate seal of said corporation, and that said instrument was signed and sealed in behalf of said corporation by the authority of its Board of Directors and said J. Stoever Hooper and R. Bruce Hooper acknowledged said instrument to the free act and deed of said corporation.

Notary Public, Hennepin County, Minnesota.
My Commission Expires: _____

State of Minnesota } 5.5. I do hereby certify that I have surveyed and platted the property described on this plat as "PENN LAKE RIDGE SECOND ADDITION"; that this plat is a correct representation of said survey; that all distances are correctly shown on the plat in feet and decimals of a foot; that the monuments for guidance of future surveys have been correctly placed in the ground as shown on the plat; that the outside boundary lines are correctly designated on the plat; that the topography of the land is correctly designated on the plat; and that there are no wet lands or public highways to be designated on said plat other than as shown thereon.

Surveyor - Minn. Reg. No. 929

Above certificate subscribed and sworn to before me, a Notary Public, on this _____ day of _____ A.D. 1950.

Notary Public, Hennepin County, Minnesota.
My Commission Expires _____

Accepted and approved this _____ day of _____ A.D. 1950.

County Surveyor

Approved as to form and execution this _____ day of _____ A.D. 1950.

Special Asst County Attorney.

Recommended for approval this _____ day of _____ A.D. 1950.

County Highway Engineer
Hennepin County, Minnesota.

This plat was approved and accepted by the Board of County Commissioners of Hennepin County, Minnesota at a regular meeting thereof held this _____ day of _____ A.D. 1950.

County Auditor

The attached plat was approved by the Planning and Zoning Commission of Bloomington Township, Minnesota this _____ day of _____ A.D. 1950.

by _____ Chairman
by _____ Secretary