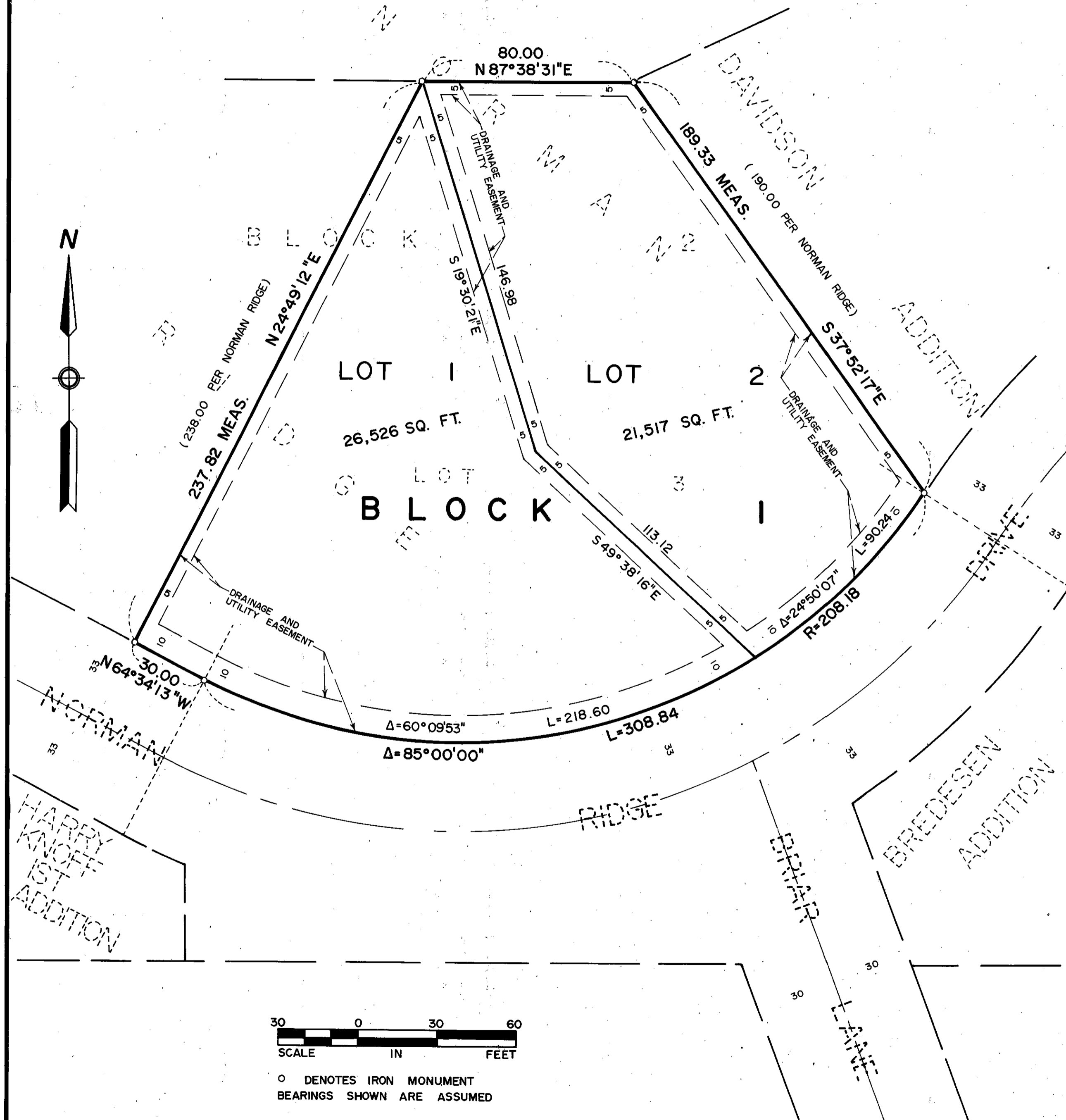


NORMAN RIDGE 6TH ADDITION

C.R. DOC. NO. _____



KNOW ALL MEN BY THESE PRESENTS: That Charles R. Dotseth and Alison B. Dotseth, husband and wife, owners and proprietors and BANCO MORTGAGE COMPANY, a Corporation of the State of Iowa, mortgagee of the following described property situated in the County of Hennepin, State of Minnesota, to wit:

Lot 3, Block 2, NORMAN RIDGE, according to the recorded plat thereof now on file and of record in the office of the County Recorder, Hennepin County.

Have caused the same to be surveyed and platted as NORMAN RIDGE 6TH ADDITION and do hereby donate and dedicate to the public, for public use forever, the drainage and utility easements as shown on said plat.

In witness whereof said Charles R. Dotseth and Alison B. Dotseth, husband and wife, have set their hands and seals this 3RD day of August 1979.

In witness whereof said BANCO MORTGAGE COMPANY, a Corporation of the State of Iowa, has caused these presents to be signed by its proper officers this 3 day of August 1979.

SIGNED: Charles R. Dotseth Charles R. Dotseth
Alison B. Dotseth Alison B. Dotseth

BANCO MORTGAGE COMPANY
SIGNED: Edward M. Graca its Vice Pres. Edward M. Graca its Vice Pres.

STATE OF MINNESOTA
COUNTY OF Hennepin
The foregoing instrument was acknowledged before me this 3RD day of August 1979 by Charles R. Dotseth and Alison B. Dotseth, husband and wife.

JOHN K. BARNES
NOTARY PUBLIC - MINNESOTA
HENNEPIN COUNTY
My commission expires Sept. 18, 1985

John K. Barnes
Notary Public, Hennepin County, Minnesota
My Commission Expires Sept. 18, 1985

STATE OF MINNESOTA
COUNTY OF Hennepin
The foregoing instrument was acknowledged before me this 3rd day of August 1979 by Edward M. Graca its Vice President and Edward M. Graca its Vice President of said BANCO MORTGAGE COMPANY, a Corporation of the State of Iowa.

Maureen G. Reagan
NOTARY PUBLIC - MINNESOTA
HENNEPIN COUNTY
My commission expires Aug. 30, 1985

Maureen G. Reagan
Notary Public, Hennepin County, Minnesota
My Commission Expires August 30, 1985

I hereby certify that I have surveyed and platted the property described on this plat as NORMAN RIDGE 6TH ADDITION; that this plat is a correct representation of said survey; that all distances are correctly shown on said plat in feet and hundredths of a foot; that all monuments have been correctly placed in the ground as shown on said plat; that the outside boundary lines are correctly designated on said plat; and that there are no wetlands or public highways to be designated on said plat.

Edward H. Sunde
Edward H. Sunde, Land Surveyor
Minnesota Registration No. 8612

STATE OF MINNESOTA
COUNTY OF Hennepin
The foregoing instrument was acknowledged before me this 30th day of July 1979 by Edward H. Sunde, Land Surveyor.

JOHN K. BARNES
NOTARY PUBLIC - MINNESOTA
HENNEPIN COUNTY
My commission expires Sept. 18, 1985

John K. Barnes
Notary Public, Hennepin County, Minnesota
My Commission Expires Sept. 18, 1985

BLOOMINGTON, MINNESOTA
The plat of NORMAN RIDGE 6TH ADDITION was approved and accepted by the City Council of the City of Bloomington, Minnesota at a regular meeting thereof, held this _____ day of _____ 19____.

CITY COUNCIL OF BLOOMINGTON, MINNESOTA
BY: _____ its Mayor BY: _____ its Manager
FINANCE DIVISION, Hennepin County, Minnesota

I hereby certify that there are no delinquent taxes for all years prior to 19____ for land described on this plat. Dated this _____ day of _____ 19____.

Vernon T. Hoppe, Director BY: _____ Tax Clerk
SURVEY DIVISION, Hennepin County, Minnesota

Pursuant to Chapter 810, Minnesota Laws of 1969, this plat has been approved this _____ day of _____ 19____.

Alver R. Freeman, Hennepin County Surveyor BY: _____
COUNTY RECORDER, Hennepin County, Minnesota
I hereby certify that the within plat of NORMAN RIDGE 6TH ADDITION was filed for record in this office this _____ day of _____ 19____, at _____ o'clock _____ M.
WAYNE A. JOHNSON, County Recorder BY: _____ Deputy