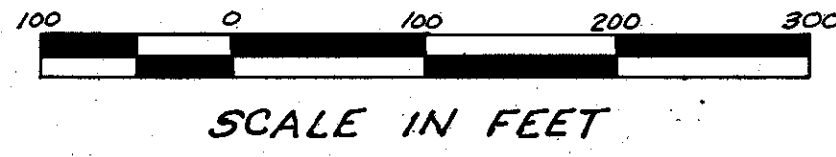
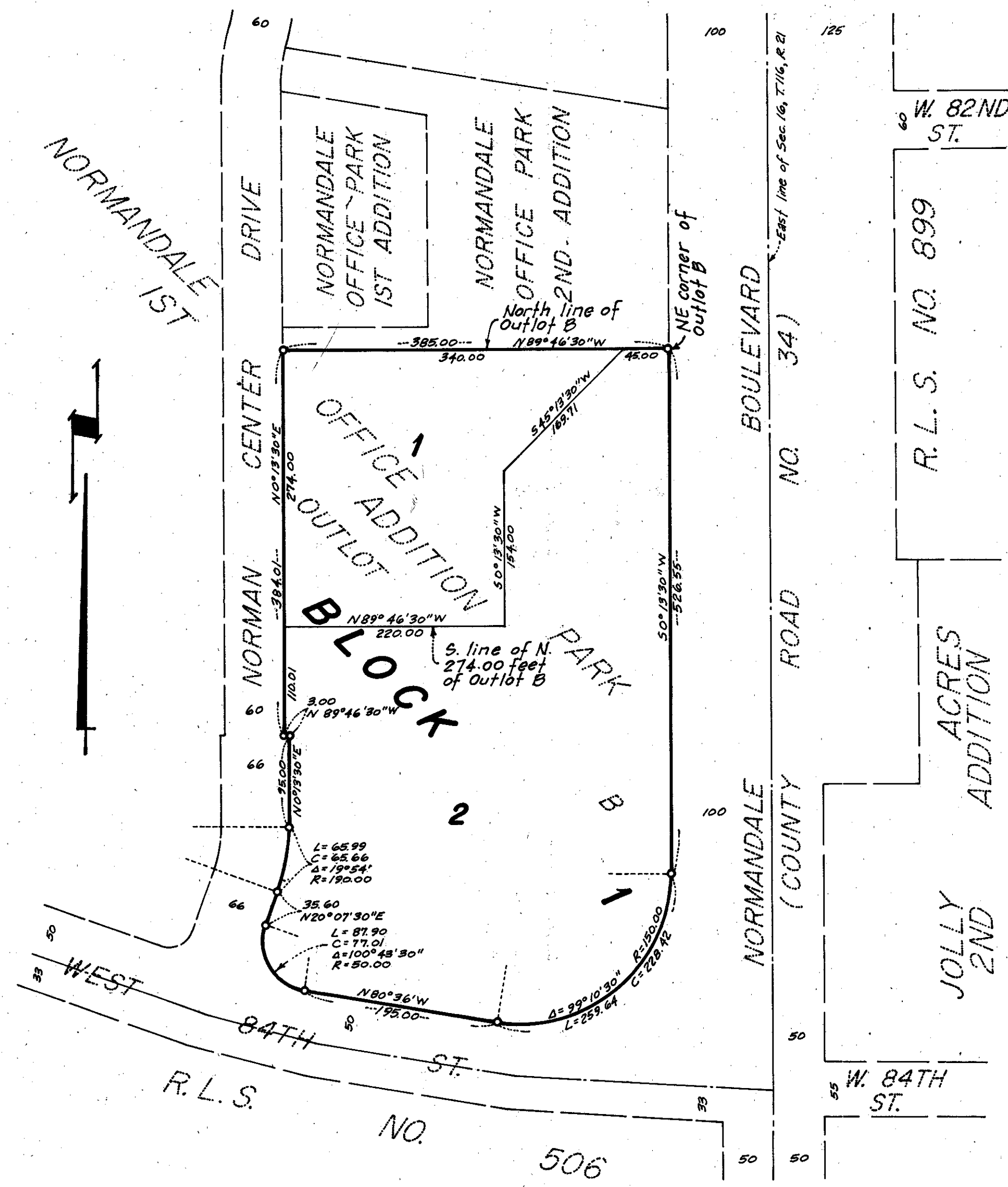


NORMANDALE OFFICE PARK 3RD ADDITION

BOOK _____ PAGE _____
R.T. DOC. NO. _____



o - Denotes Iron Monument
Bearings shown are assumed



KNOW ALL MEN BY THESE PRESENTS: That General Partners, Inc., a Minnesota corporation, owner and proprietor, and First Wisconsin National Bank of Milwaukee, a National Banking Association, mortgagee, of the following described property situated in the State of Minnesota and County of Hennepin, to wit:

That part of the North 274.00 feet of Outlot B, which lies northwesterly and westerly of the following described line. Said line is described as follows: Commencing at the northeast corner of said Outlot B; thence on an assumed bearing of North 89 degrees 46 minutes 30 seconds West, along the north line of said Outlot B, a distance of 45.00 feet, to the beginning of the line to be described; thence South 45 degrees 13 minutes 30 seconds West a distance of 169.71 feet; thence South 0 degrees 13 minutes 30 seconds West a distance of 160.00 feet and said line there terminating.

All in Normandale Office Park 1st Addition, according to the plat thereof on file or of record in the office of the Registrar of Titles in and for said County.

And that Minnesota Urban Developers, Inc., a Minnesota corporation, owner and proprietor, and the Northwestern National Bank of Minneapolis, a United States of America corporation, mortgagee, of the following described property situated in the State of Minnesota and County of Hennepin, to wit:

Outlot B, except that part of the North 274 feet thereof which lies northwesterly and westerly of the following described line. Said line is described as follows: Commencing at the northeast corner of said Outlot B; thence on an assumed bearing of North 89 degrees 46 minutes 30 seconds West, along the north line of said Outlot B, a distance of 45.00 feet, to the beginning of the line to be described; thence South 45 degrees 13 minutes 30 seconds West a distance of 169.71 feet; thence South 0 degrees 13 minutes 30 seconds West a distance of 160.00 feet and said line there terminating.

All in Normandale Office Park 1st Addition, according to the plat thereof on file or of record in the office of the Registrar of Titles in and for said County.

Have caused the same to be surveyed and platted as NORMANDALE OFFICE PARK 3RD ADDITION. In witness whereof said General Partners, Inc. has caused these presents to be signed by its proper officers and its corporate seal to be hereunto affixed this 25th day of SEPTEMBER A. D. 1974, and said First Wisconsin National Bank of Milwaukee has caused these presents to be signed by its proper officers and its corporate seal to be hereunto affixed this 25th day of SEPTEMBER A. D. 1974, and said Minnesota Urban Developers, Inc. has caused these presents to be signed by its proper officers and its corporate seal to be hereunto affixed this 25th day of SEPTEMBER A. D. 1974, and said Northwestern National Bank of Minneapolis has caused these presents to be signed by its proper officers and its corporate seal to be hereunto affixed this 25th day of SEPTEMBER A. D. 1974.

SIGNED:
GENERAL PARTNERS, INC.
By Frederick L. Wall III, President
By Lee B. Hoffman, Treasurer
MINNESOTA URBAN DEVELOPERS, INC.
By Frederick L. Wall III, President
By Lee B. Hoffman, Treasurer

FIRST WISCONSIN NATIONAL BANK OF MILWAUKEE
By Frederick F. Ehle, its Mortgage Banking Officer
By Shane H. Pugh, its Mortgage Servicing Officer
NORTHWESTERN NATIONAL BANK OF MINNEAPOLIS
By Carlisle Madson, its Vice Pres.
By Gregory E. Hobbs, its Asst. Vice Pres.

STATE OF MINNESOTA COUNTY OF HENNEPIN
The foregoing instrument was acknowledged before me this 25th day of SEPTEMBER A. D. 1974 by Frederick L. Wall III, President, and Lee B. Hoffman, Treasurer, of General Partners, Inc., a Minnesota corporation, on behalf of the corporation.
Harmon H. Tracy
Notary Public, Hennepin County, Minnesota
My Commission Expires Feb 20, 1978

STATE OF WISCONSIN COUNTY OF MILWAUKEE
The foregoing instrument was acknowledged before me this 25th day of SEPTEMBER A. D. 1974 by Frederick F. Ehle, Mortgage Banking Officer, and Shane H. Pugh, Mortgage Servicing Officer, of First Wisconsin National Bank of Milwaukee, a National Banking Association, on behalf of the association.
Carlisle Madson
Notary Public, Milwaukee County, Wisconsin
My Commission Expires 12 31 1977

STATE OF MINNESOTA COUNTY OF HENNEPIN
The foregoing instrument was acknowledged before me this 25th day of SEPTEMBER A. D. 1974 by Frederick L. Wall III, President, and Lee B. Hoffman, Treasurer, of Minnesota Urban Developers, Inc., a Minnesota corporation, on behalf of the corporation.
Harmon H. Tracy
Notary Public, Hennepin County, Minnesota
My Commission Expires Feb 20, 1978

STATE OF MINNESOTA COUNTY OF HENNEPIN
The foregoing instrument was acknowledged before me this 25th day of SEPTEMBER A. D. 1974 by R.D. Schaeffer, Vice Pres., and Gregory E. Hobbs, Asst. Vice Pres., of Northwestern National Bank of Minneapolis, a United States of America corporation, on behalf of the corporation.
Harmon H. Tracy
Notary Public, Hennepin County, Minnesota
My Commission Expires Feb 20, 1978

I hereby certify that I have surveyed and platted the property described on this plat as NORMANDALE OFFICE PARK 3RD ADDITION; that this plat is a correct representation of said survey; that all distances are correctly shown on the plat in feet and hundredths of a foot; that all monuments have been correctly placed in the ground as shown on the plat; that the outside boundary lines are correctly designated on the plat; and that there are no wet lands or public highways to be designated on said plat.

STATE OF MINNESOTA COUNTY OF HENNEPIN
The foregoing instrument was acknowledged before me this 23rd day of September A. D. 1974 by Carlisle Madson, Land Surveyor.
Carlisle Madson
Land Surveyor, Minn. Reg. No. 4374

The plat of NORMANDALE OFFICE PARK 3RD ADDITION was approved and accepted by the City Council of the City of Bloomington, Minnesota, at a regular meeting thereof held this _____ day of _____ A. D. 1974.

By _____, Mayor CITY COUNCIL OF THE CITY OF BLOOMINGTON, MINNESOTA
By _____, Manager

FINANCE DIVISION, Hennepin County, Minnesota.
I hereby certify that there are no delinquent taxes for all years prior to _____ for land described on this plat. Dated this _____ day of _____ 1974.

SCHOELL & MADSON, INC.
ENGINEERS & SURVEYORS
Vernon T. Hoppe, Director By _____ Tax Clerk

HENNEPIN COUNTY SURVEYOR,
Pursuant to Chapter 810, Minnesota Laws of 1969, this plat has been approved this _____ day of _____ A. D. 1974.

By Alver R. Freeman
Hennepin County Surveyor

REGISTRAR OF TITLES, Hennepin County, Minnesota.
I hereby certify that the within plat of NORMANDALE OFFICE PARK 3RD ADDITION was filed in this office this _____ day of _____ 1974, at _____ o'clock _____ M and that the two copies were compared with the official plat and were found to be true and correct copies thereof.
Wayne A. Johnson, Registrar of Titles By _____ Deputy

BINDING FOR RESERVED SPACE THIS