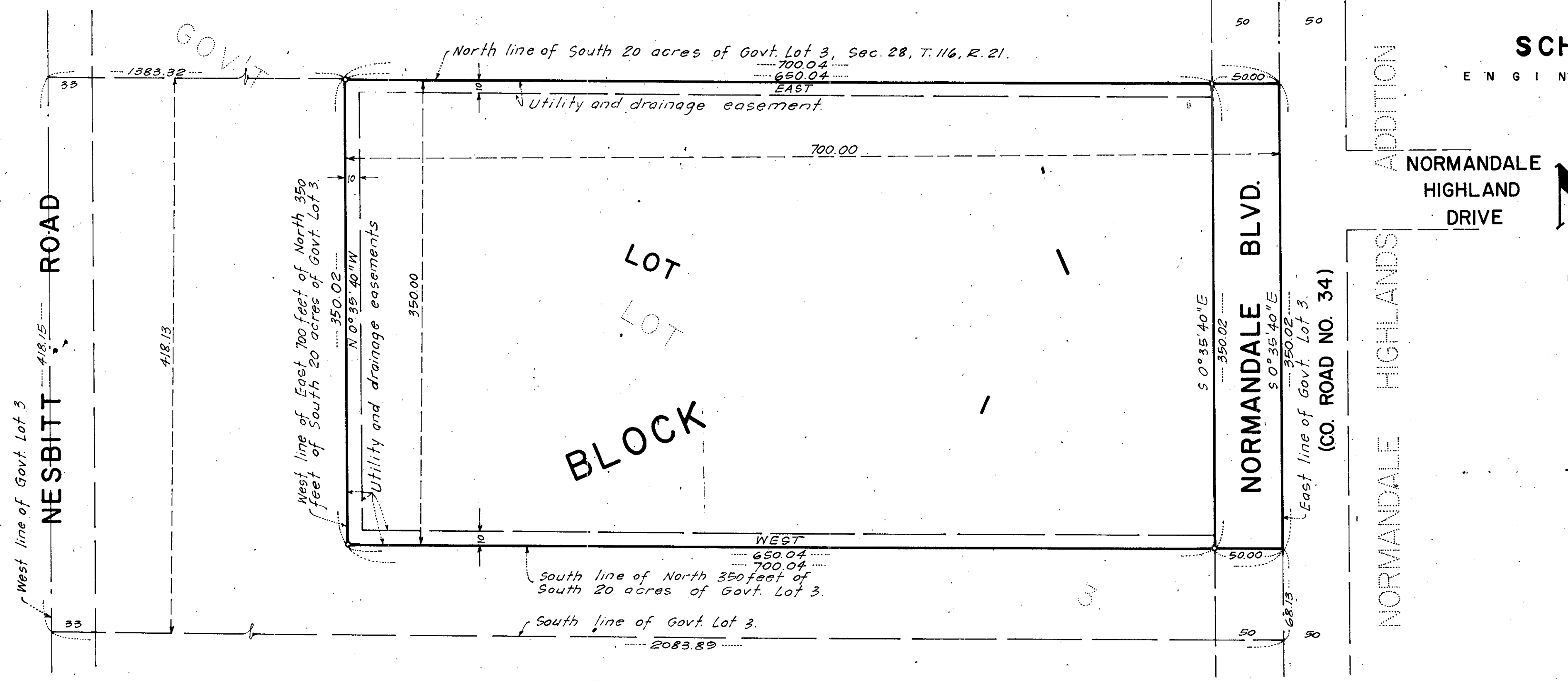


# NORMANDALE HIGHLANDS UNITED METHODIST CHURCH PLAT



**SCHOELL & MADSON - INC.**  
ENGINEERS & SURVEYORS

NOTES:  
Scale: 1 inch = 60 feet  
o Denotes iron monument.  
Bearings shown are assumed.

KNOW ALL MEN BY THESE PRESENTS: That Minnesota Conference of the Evangelical United Brethren Church, a Minnesota corporation, owner and proprietor, of the following described property situated in the County of Hennepin, State of Minnesota, to wit:

The east 700 feet of the north 350 feet of the south 20 acres of Government Lot 3, Section 28, Township 116, Range 21, Hennepin County, Minnesota.

Has caused the same to be surveyed and platted as NORMANDALE HIGHLANDS UNITED METHODIST CHURCH PLAT and do hereby donate and dedicate to the public for public use forever the boulevard and the utility and drainage easements as shown on the plat.

In witness whereof said Minnesota Conference of the Evangelical United Brethren Church has caused these presents to be signed by its proper officers and its corporate seal to be hereunto affixed this 18th day of January A. D. 1969.

IN PRESENCE OF:

Paul A. Woodhams and Edmund Pearson  
Eloy B. ... and Wayne J. Abdella

SIGNED:  
MINNESOTA CONFERENCE OF THE EVANGELICAL UNITED BRETHREN CHURCH  
By Ray F. Boehlke Pres.  
By Delmont K. Gordy Secy.

STATE OF MINNESOTA  
COUNTY OF HENNEPIN

On this 18th day of January A. D. 1969, before me, a Notary Public, personally appeared Ray F. Boehlke and Delmont K. Gordy to me personally known, who, being each by me duly sworn did say that they are respectively the President and Secretary of Minnesota Conference of the Evangelical United Brethren Church, the corporation named in the foregoing instrument and the seal affixed to said instrument is the corporate seal of said corporation and said instrument was signed and sealed in behalf of said corporation by authority of its Board of Directors and said Ray F. Boehlke and Delmont K. Gordy acknowledged said instrument to be the free act and deed of said corporation.

Neil W. ...  
Notary Public, Hennepin County, Minnesota  
My Commission Expires 4th 26, 1971

I hereby certify that I have surveyed and platted the property described on this plat as NORMANDALE HIGHLANDS UNITED METHODIST CHURCH PLAT; that this plat is a correct representation of said survey; that all distances are correctly shown on the plat in feet and decimals of a foot; that all monuments have been correctly placed in the ground as shown on the plat; that the outside boundary lines are correctly designated on the plat; and that there are no wet lands or public highways to be designated on said plat other than as shown thereon.

Carlisle Madson  
Carlisle Madson  
Land Surveyor, Minn. Reg. No. 4374

STATE OF MINNESOTA  
COUNTY OF HENNEPIN

Above certificate subscribed and sworn to before me, a Notary Public, this 17th day of JANUARY A. D. 1969.

Theodore D. Kemna  
Theodore D. Kemna  
Notary Public, Hennepin County, Minnesota  
My Commission Expires January 27, 1972

The plat of NORMANDALE HIGHLANDS UNITED METHODIST CHURCH PLAT was approved and accepted by the City Council of Bloomington, Minnesota, at a regular meeting thereof held this \_\_\_\_\_ day of \_\_\_\_\_ A. D. 1969.

City Council of Bloomington, Minnesota  
By \_\_\_\_\_ its Mayor  
By \_\_\_\_\_ its Manager

The boundaries of this plat and the boundaries of the block therein have been mathematically checked and approved. No determination has been made to ascertain that the legal description agrees with said plat. Dated this \_\_\_\_\_ day of \_\_\_\_\_ A. D. 1969.

By Elmer J. Peterson  
Hennepin County Surveyor