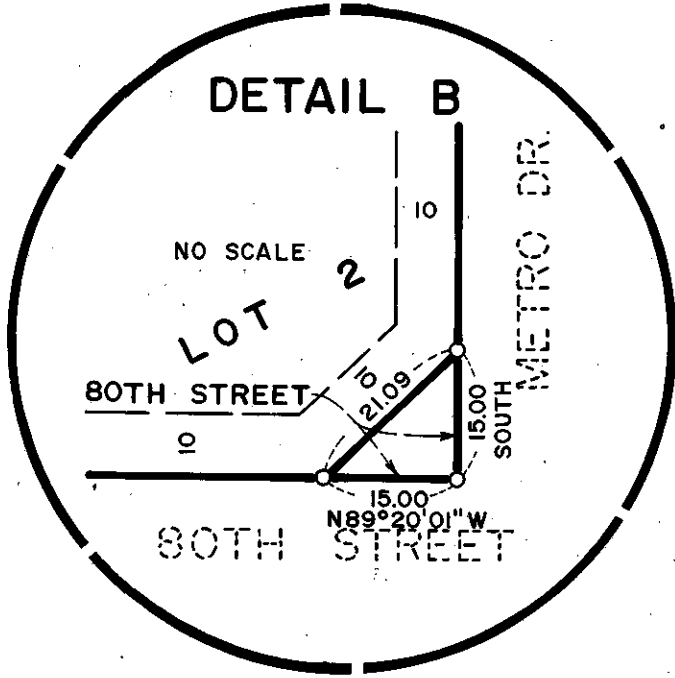
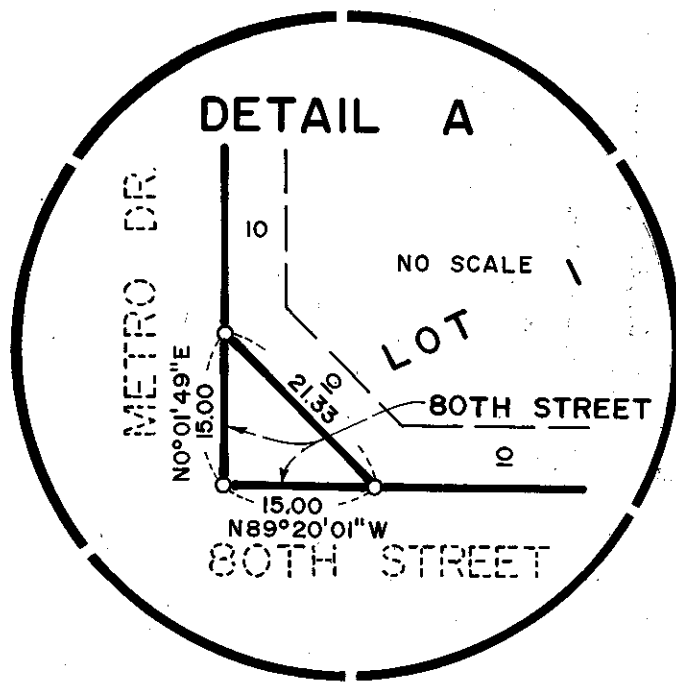
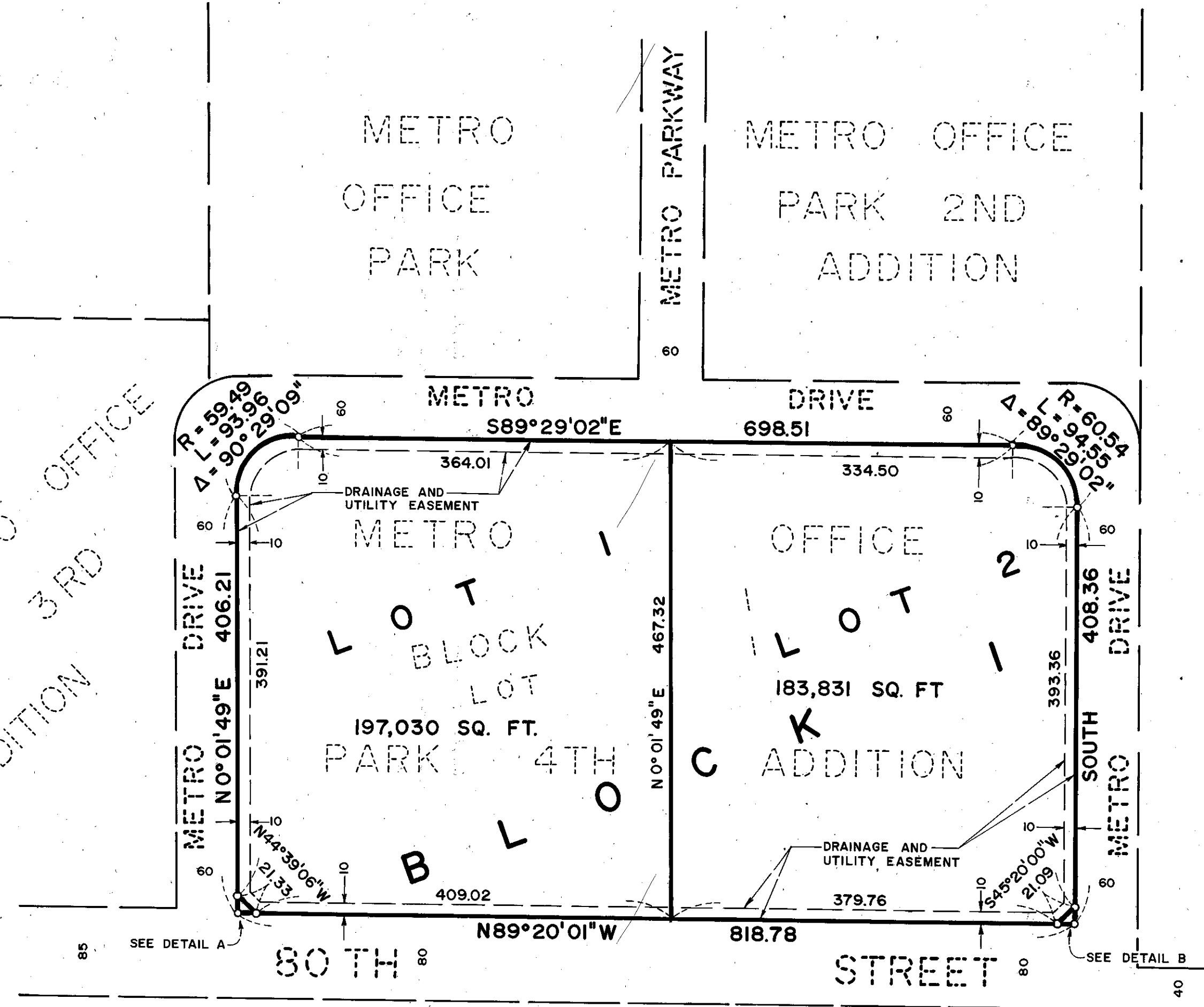


# METRO OFFICE PARK 5TH ADDITION

○ DENOTES IRON MONUMENT  
BEARINGS SHOWN ARE BASED ON ASSUMED DATUM



KNOW ALL MEN BY THESE PRESENTS: That FIRST CONSTRUCTION CO., a Minnesota Corporation, owner and proprietor and FIRST NATIONAL BANK OF SAINT PAUL, a United States Corporation, mortgagee of the following described land situated in the County of Hennepin, State of Minnesota to wit:

Lot 1, Block 1, Metro Office Park 4th Addition, according to the plat thereof on file and of record in the office of the County Recorder in and for Hennepin County, Minnesota.

Have caused the same to be surveyed and platted as METRO OFFICE PARK 5TH ADDITION and do hereby donate and dedicate to the public, for public use forever the street and the drainage and utility easements as shown on said plat.

In witness whereof said FIRST CONSTRUCTION CO., a Minnesota Corporation, has caused these presents to be signed by its proper officers this \_\_\_\_\_ day of \_\_\_\_\_ A.D., 197\_\_\_\_\_.

And in witness whereof said FIRST NATIONAL BANK OF SAINT PAUL, a United States Corporation, has caused these presents to be signed by its proper officers and its corporate seal to be hereunto affixed this \_\_\_\_\_ day of \_\_\_\_\_ A.D., 197\_\_\_\_\_.

FIRST CONSTRUCTION CO.

SIGNED: \_\_\_\_\_ its \_\_\_\_\_ its \_\_\_\_\_

FIRST NATIONAL BANK OF SAINT PAUL

SIGNED: \_\_\_\_\_ its \_\_\_\_\_ its \_\_\_\_\_

STATE OF MINNESOTA  
COUNTY OF \_\_\_\_\_

The foregoing instrument was acknowledged before me this \_\_\_\_\_ day of \_\_\_\_\_ A.D., 197\_\_\_\_\_ by \_\_\_\_\_ and \_\_\_\_\_

of said FIRST CONSTRUCTION CO., a Minnesota Corporation, on behalf of said corporation.

Notary Public \_\_\_\_\_ County, Minnesota  
My Commission expires \_\_\_\_\_

STATE OF MINNESOTA  
COUNTY OF \_\_\_\_\_

The foregoing instrument was acknowledged before me this \_\_\_\_\_ day of \_\_\_\_\_ A.D., 197\_\_\_\_\_ by \_\_\_\_\_ its \_\_\_\_\_ and \_\_\_\_\_

of said FIRST NATIONAL BANK OF ST. PAUL, a United States Corporation, on behalf of said corporation.

Notary Public \_\_\_\_\_ County, Minnesota  
My Commission expires \_\_\_\_\_

I hereby certify that I have surveyed and platted the property described on this plat as METRO OFFICE PARK 5TH ADDITION; that this plat is a correct representation of said survey; that all distances are correctly shown on said plat in feet and hundredths of a foot; that all monuments have been correctly placed in the ground as shown on said plat; that the outside boundary lines are correctly designated; and that there are no wet lands to be designated on said plat.

*Edward H. Sunde*  
Edward H. Sunde, Land Surveyor  
Minnesota Registration No. 8612

STATE OF MINNESOTA  
COUNTY OF Dakota

The foregoing instrument was acknowledged before me this 28<sup>th</sup> day of March A.D., 1977 by Edward H. Sunde, Land Surveyor.



*Sharon L. Flear*  
Notary Public Dakota County, Minnesota  
My Commission expires January 14, 1983

BLOOMINGTON, MINNESOTA

The plat of METRO OFFICE PARK 5TH ADDITION was approved and accepted by the City Council of the City of Bloomington, Minnesota at a regular meeting thereof, held this \_\_\_\_\_ day of \_\_\_\_\_ A.D., 197\_\_\_\_\_.

CITY COUNCIL OF BLOOMINGTON, MINNESOTA

By: \_\_\_\_\_ its Mayor By: \_\_\_\_\_ its Manager

FINANCE DIVISION, Hennepin County, Minnesota

I hereby certify that there are no delinquent taxes for all years prior to 197\_\_\_\_\_ for land described on this plat. Dated this \_\_\_\_\_ day of \_\_\_\_\_, 197\_\_\_\_\_.

Vernon T. Hoppe, Director By: \_\_\_\_\_ Tax Clerk

COUNTY SURVEYOR, Hennepin County, Minnesota

Pursuant to Chapter 810, Minnesota Laws of 1969, this plat has been approved this \_\_\_\_\_ day of \_\_\_\_\_, A.D., 197\_\_\_\_\_.

By: Alver R. Freeman, Hennepin County Surveyor

COUNTY RECORDER, Hennepin County, Minnesota

I hereby certify that the within plat of METRO OFFICE PARK 5TH ADDITION was filed for record in this office this \_\_\_\_\_ day of \_\_\_\_\_, 197\_\_\_\_\_, at \_\_\_\_\_ o'clock \_\_\_\_\_ M. and was recorded in Book \_\_\_\_\_ of Plats, Page \_\_\_\_\_ and that the two copies were compared with the official plat and were found to be true and correct copies thereof.

WAYNE A. JOHNSON, County Recorder By: \_\_\_\_\_ Deputy

THIS SPACE RESERVED FOR BINDING