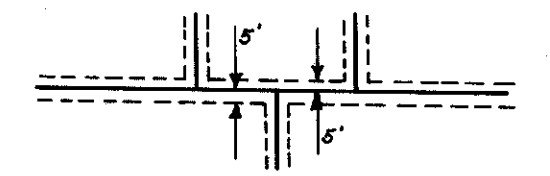


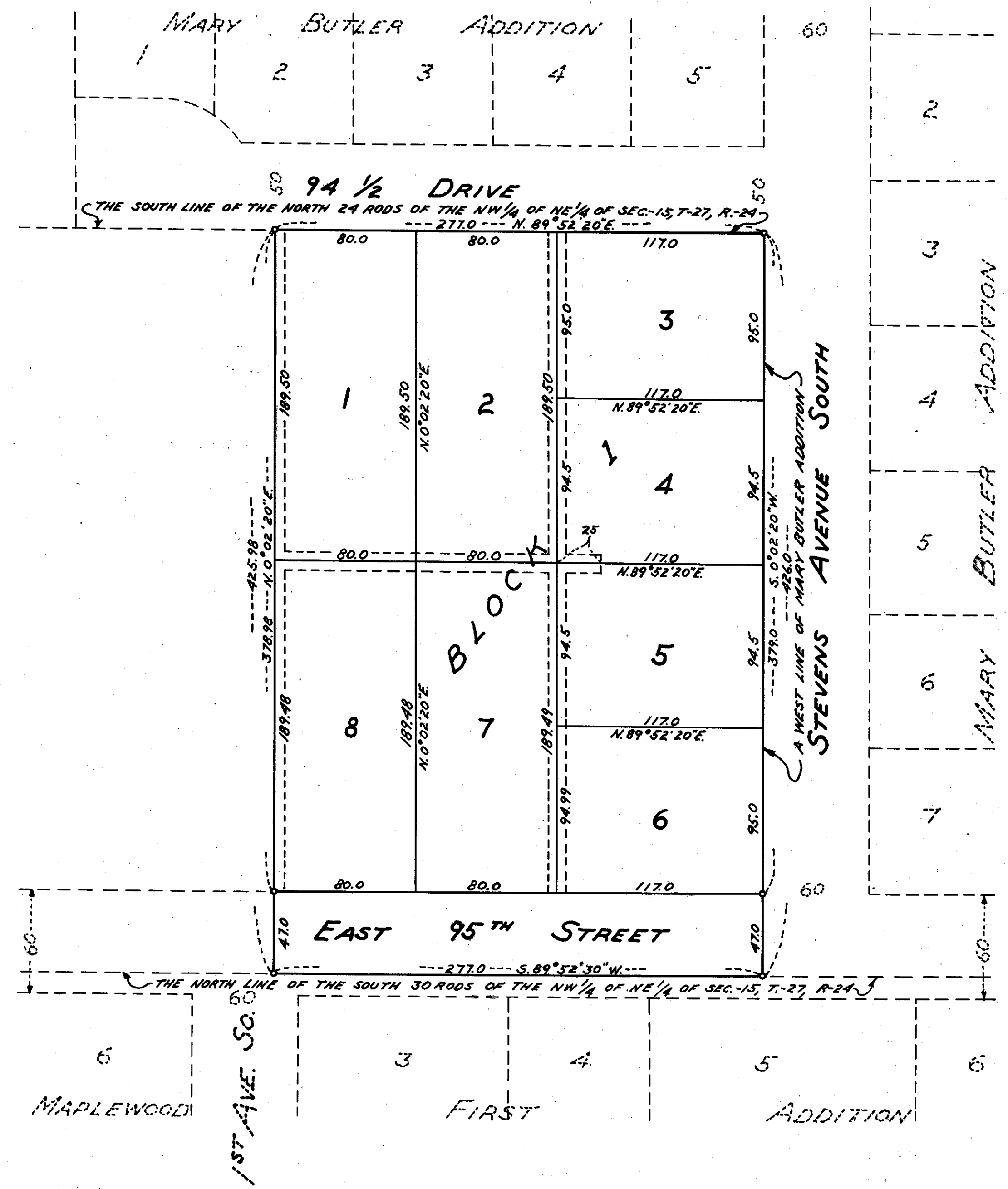
# MARY BUTLER 2<sup>ND</sup> ADDITION

HENNEPIN COUNTY, MINNESOTA

DASHED LINES DENOTE DRAINAGE & UTILITY EASEMENTS AND ARE FIVE FEET IN WIDTH ON EACH SIDE OF LOT LINES AS SHOWN.



5" DENOTES IRON MONUMENT, BEARINGS SHOWN ARE ASSUMED.



Know all men by these presents: That George R. Butler Construction Co., a Minnesota Corporation, as owner and proprietor of the following described property situated in the State of Minnesota and County of Hennepin to wit: The East 277 feet of the following described property: The Northwest 1/4 of the Northeast 1/4 except the South 30 rods thereof and except the North 24 rods thereof, Section 15, Township 27, Range 24 and also except that part thereof platted as MARY BUTLER ADDITION according to the United States Government Survey thereof. Has caused the same to be surveyed and platted as MARY BUTLER 2<sup>ND</sup> ADDITION and do hereby donate and dedicate to the public for the public use forever the street and also the easements for utility and drainage purposes as shown on the annexed plat. In witness whereof George R. Butler Construction Co. has caused these presents to be signed by its proper officers and its corporate seal to be hereunto affixed on this \_\_\_\_\_ day of \_\_\_\_\_ A.D. 1963.

In Presence Of

Signed

GEORGE R. BUTLER CONSTRUCTION CO.

\_\_\_\_\_  
\_\_\_\_\_  
\_\_\_\_\_

\_\_\_\_\_  
George R. Butler its President  
\_\_\_\_\_  
Mildred B. Butler its Secretary

State of Minnesota  
County of Hennepin On this \_\_\_\_\_ day of \_\_\_\_\_ A.D. 1963, before me, a Notary Public, within and for said County and State, personally appeared George R. Butler and Mildred B. Butler, to me personally known, who being by me each duly sworn, did say that they are respectively the President and Secretary of George R. Butler Construction Co., the corporation named in the foregoing instrument, that the seal affixed to said instrument is the corporate seal of said corporation, that said instrument was signed and sealed in behalf of said corporation by authority of its board of directors, and said George R. Butler and Mildred B. Butler acknowledge said instrument to be the free act and deed of said corporation

\_\_\_\_\_  
Notary Public, Hennepin County, Minnesota  
My Commission Expires \_\_\_\_\_

I hereby certify that I have surveyed and platted the property described and shown on this plat as MARY BUTLER 2<sup>ND</sup> ADDITION, that this plat is a correct representation of said survey, that all distances are correctly shown on said plat in feet and decimals of a foot, that the monuments for the guidance of future surveys have been correctly placed in the ground as shown on said plat, that the outside boundary lines are correctly designated on said plat, and there are no wet lands or public highways to be designated on said plat other than as shown thereon.

\_\_\_\_\_  
Calvin H. Hedlund, Surveyor  
Minnesota Reg. No. 5942

State of Minnesota  
County of Hennepin The above certificate was subscribed and sworn to before me, a Notary Public, within and for said County and State, on this \_\_\_\_\_ day of \_\_\_\_\_ A.D. 1963.

\_\_\_\_\_  
Notary Public, Hennepin County, Minnesota  
My Commission Expires \_\_\_\_\_

The plat of MARY BUTLER 2<sup>ND</sup> ADDITION was approved and accepted by the City Council of Bloomington, Minnesota, at a regular meeting thereof held on this \_\_\_\_\_ day of \_\_\_\_\_ A.D. 1963.

City Council, Bloomington, Minnesota

by Charles G. Jensen its Mayor  
by \_\_\_\_\_ its Manager

The boundaries of this plat and the boundaries of the block therein have been mathematically checked and approved. No determination has been made to ascertain that the legal description agrees with said plat.

Dated this \_\_\_\_\_ day of \_\_\_\_\_ A.D. 1963.

by \_\_\_\_\_  
Howard W. Perkins, Hennepin County Surveyor