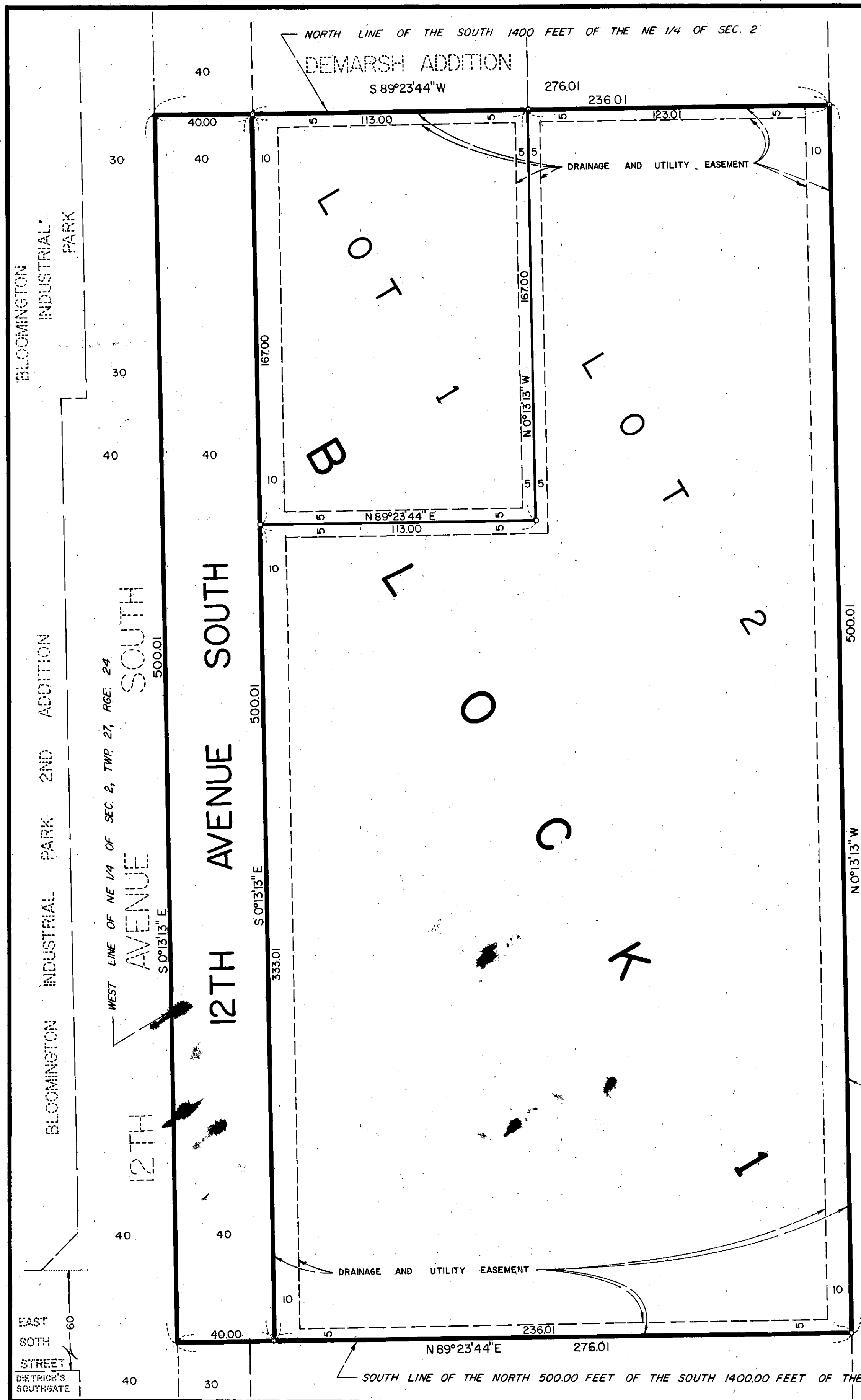


# LARRY STEIN ADDITION



KNOW ALL MEN BY THESE PRESENTS: That Laurel C. Stein and Cathy Lynn Stein, husband and wife, owners and proprietors and Twin City Federal Savings and Loan Association, a United States corporation, mortgagee, of the following described property situate in the County of Hennepin, State of Minnesota, to wit:

The North 500.0 feet of the South 1400.0 feet of the West 276.0 feet of the Northeast Quarter of Section 2, Township 27, Range 24, Hennepin County, Minnesota.

Have caused the same to be surveyed and platted as LARRY STEIN ADDITION, and do hereby donate and dedicate to the public for the public use forever, the drainage and utility easements, and avenue as shown on this plat.

In witness whereof Laurel C. Stein and Cathy Lynn Stein, husband and wife, have hereunto set their hands this 25th day of November, 1985.

And in witness whereof Twin City Federal Savings and Loan Association, a United States corporation, has caused these presents to be signed by its proper officers and its corporate seal to be hereunto affixed this 2nd day of December, 1985.

SIGNED Laurel C. Stein Cathy Lynn Stein  
 SIGNED Twin City Federal Savings and Loan Association  
D.J. McDonaghe its 1st Vice President  
R.A. Christensen its 2nd Vice President

STATE OF MINNESOTA COUNTY OF Hennepin The foregoing instrument was acknowledged before me this 2nd day of December, 1985 by Laurel C. Stein and Cathy Lynn Stein, husband and wife  
R. A. Christensen  
 Notary Public, Ramsey County, Minnesota  
 My Commission Expires 5-14-87

STATE OF MINNESOTA COUNTY OF Hennepin The foregoing instrument was acknowledged before me this 25th day of November, 1985 by D.J. McDonaghe its 1st Vice President and R.A. Christensen its 2nd Vice President of said Twin City Federal Savings and Loan Association, a United States corporation, on behalf of said corporation.  
Sherry L. Duhn  
 Notary Public, Hennepin County, Minnesota  
 My Commission Expires 10-9-86

I hereby certify that I have surveyed and platted the property described on this plat as LARRY STEIN ADDITION; that this plat is a correct representation of said survey; that all distances are correctly shown on the plat in feet and hundredths of a foot; that all monuments have been correctly placed in the ground as shown on the plat; that the outside boundary lines are correctly designated on said plat; and that there are no wetlands to be designated on said plat.

Harry S. Johnson  
 Land Surveyor, Minn. Lic. No. 5065

STATE OF MINNESOTA COUNTY OF Dakota The foregoing instrument was acknowledged before me this 21st day of November, 1985 by Harry S. Johnson, Land Surveyor.  
Arluce A. Nelson  
 Notary Public, Dakota County, Minnesota  
 My Commission Expires July 30, 1989

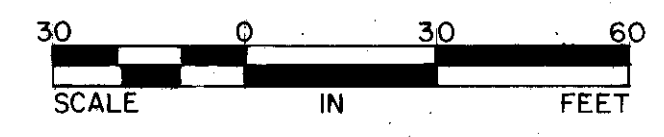
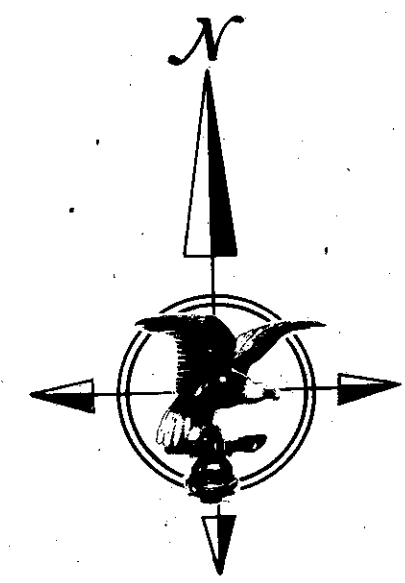
The plat of LARRY STEIN ADDITION was approved and accepted by the City Council of Bloomington, Minnesota at a regular meeting thereof held this \_\_\_\_\_ day of \_\_\_\_\_, 1985. If applicable, the written comments and recommendations of the Commissioner of Transportation and the County Highway Engineer have been received by the City or the prescribed 30 day period has elapsed without receipt of such comments and recommendations as provided by Minn. Statutes, Section 505.03 Subd. 2.

CITY COUNCIL OF BLOOMINGTON, MINNESOTA  
 By \_\_\_\_\_ Mayor By \_\_\_\_\_ Manager

PROPERTY TAX AND PUBLIC RECORDS DEPARTMENT, HENNEPIN COUNTY, MINNESOTA  
 I hereby certify that taxes payable in \_\_\_\_\_ and for all prior years have been paid for land described on this plat. Dated this \_\_\_\_\_ day of \_\_\_\_\_, 1985.

Dale G. Folstad, Hennepin County Auditor By \_\_\_\_\_ deputy  
 SURVEY DIVISION, Hennepin County, Minnesota Pursuant to Chapter 810, Minnesota Laws of 1969, this plat has been approved this \_\_\_\_\_ day of \_\_\_\_\_, 1985.

Robert L. Bakka, Hennepin County Surveyor, by \_\_\_\_\_  
 COUNTY RECORDER, Hennepin County, Minnesota. I hereby certify that the within plat of LARRY STEIN ADDITION was filed for record in this office this \_\_\_\_\_ day of \_\_\_\_\_, 1985 at \_\_\_\_\_ o'clock M.  
 R. Dan Carlson, County Recorder, by \_\_\_\_\_ Deputy.



o DENOTES IRON MONUMENT  
 BEARINGS SHOWN ARE BASED ON AN ASSUMED DATUM

