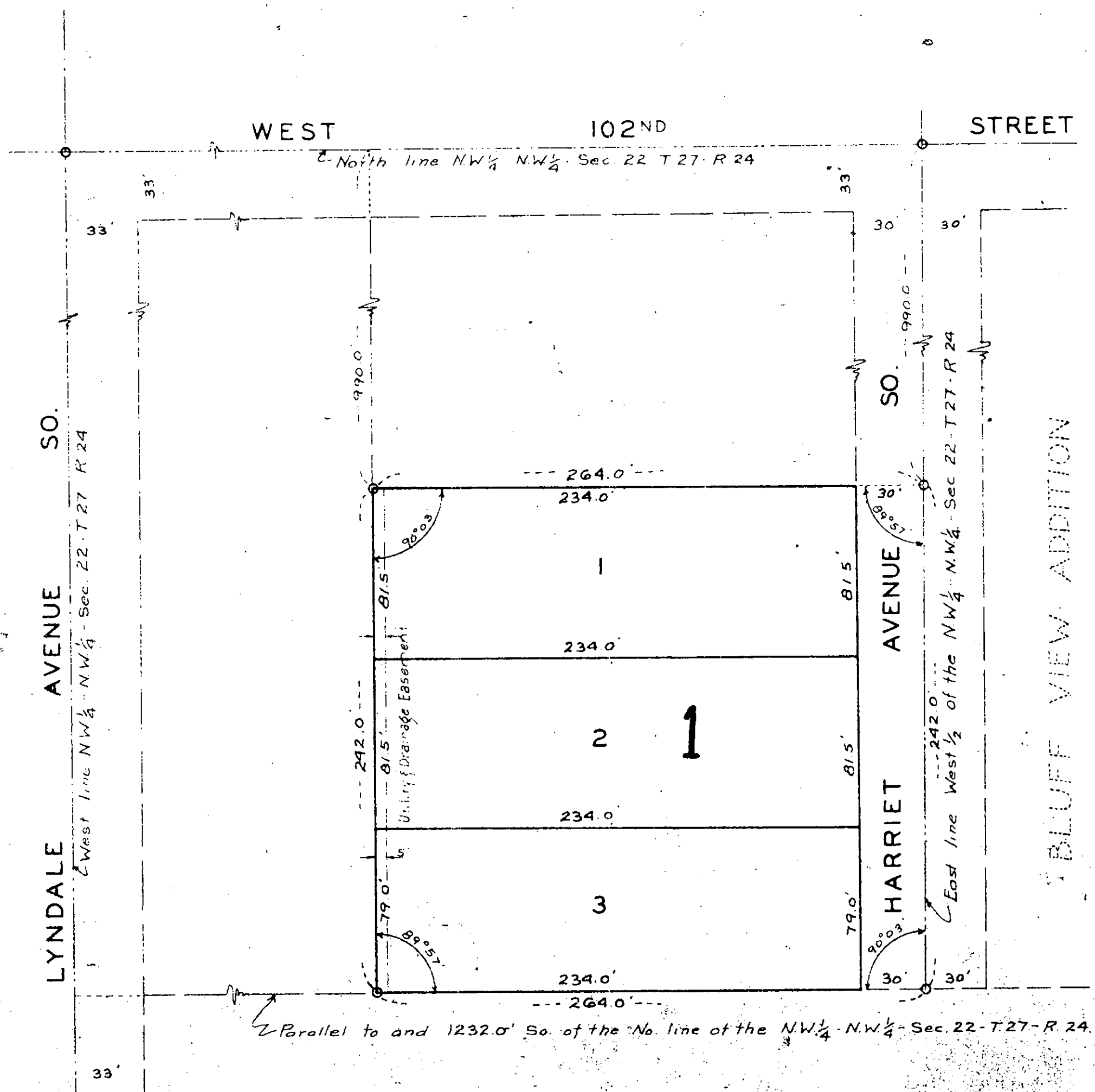
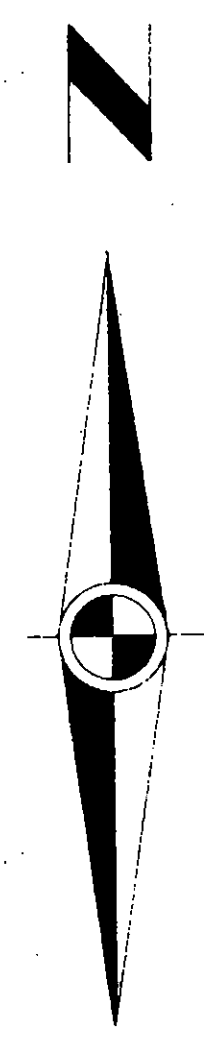


LARRY BUTLER ADDITION

HENNEPIN COUNTY, MINNESOTA

SCALE: 1" = 50 FEET
o INDICATES IRON MONUMENT

JAMES M. HALVERSON
SURVEYOR



KNOW ALL MEN BY THESE PRESENTS: that the Anderson-Butler Construction Co., a Minnesota corporation and owners and proprietors of the following described property situated in the County of Hennepin and State of Minnesota to wit: the South 242.0 feet of the North 1232.0 feet of the East 264.0 feet of the West one-half of the N.W. 1/4 of the N.W. 1/4 of Section 22, Township 27, Range 24. Have caused the same to be surveyed and platted as LARRY BUTLER ADDITION and do hereby donate and dedicate to the public for public use forever the avenue as shown on the annexed plat; and also subject to the utility and drainage easements as shown on the annexed plat. In witness whereof the Anderson-Butler Construction Co. have cause these presents to be signed by their proper officers and its corporate seal to be hereunto affixed this 29th day of MARCH A.D. 1955.

in presence of:
 Anderson-Butler Construction Co.
 by Marvin H. Anderson President
 by George R. Butler Secretary

STATE OF MINNESOTA }
 COUNTY OF HENNEPIN } ss. On this 29th day of MARCH A.D. 1955 before me, a notary public within and for said county and state personally appeared Marvin H. Anderson and George R. Butler, to me personally know who each being duly sworn did say that they are respectively the President and Secretary of the Anderson-Butler Construction Co., a Minnesota corporation, the corporation named in the foregoing instrument and the seal affixed to the same instrument is the corporate seal of said corporation, and that said instrument was signed and sealed in behalf of said corporation by authority of its Board of Directors, and said Marvin H. Anderson and George R. Butler acknowledged said instrument to be the free act and deed of said corporation.

I hereby certify that I have surveyed and platted the property described on this plat as LARRY BUTLER ADDITION; that this plat is a correct representation of said survey; that all distances are correctly shown on the plat in feet and decimals of a foot; that the monuments for guidance of future surveys have been correctly placed in the ground as shown on the annexed plat; and that there are no wet lands or public highways to be designated on said plat other than as shown thereon, that the outside boundary lines are correctly designated on the plat.
 James M. Halverson
 Registered Land Surveyor Minnesota Registration No. 1811

STATE OF MINNESOTA }
 COUNTY OF HENNEPIN } ss. The above certificate was subscribed and sworn to before me, a notary public within and for said county and state on this 29th day of MARCH A.D. 1955.
James M. Halverson
 Notary Public, Hennepin County, Minnesota
 My Commission Expires AUG 28, 1959

This plat was checked and approved on this 29th day of March A.D. 1955.
Howard W. Peck
 County Surveyor - Hennepin County, Minnesota

This plat was approved and accepted by the Village Council of the Village of Bloomington, Minnesota at a regular meeting thereof held this 29th day of March A.D. 1955.

VILLAGE COUNCIL OF THE VILLAGE OF BLOOMINGTON, MINNESOTA
 by _____ its Mayor
 by James M. Halverson its Clerk