

# L.M.J. 4TH ADDITION

R. T. DOC. NO. \_\_\_\_\_

KNOW ALL MEN BY THESE PRESENTS: That BRIDGEWAY SOUTH, a Minnesota Limited Partnership, owner and proprietor, and MIDWEST FEDERAL SAVINGS AND LOAN ASSOCIATION OF MINNEAPOLIS, a corporation organized under the laws of the United States of America, mortgagee of the following described property situated in the County of Hennepin, State of Minnesota to wit:

The North 355.87 feet of Lot 7, Block 4, L.M.J. 2nd Addition according to the plat thereof on file or of record in the office of the Registrar of Titles for Hennepin County, Minnesota.

and that HAMPSHIRE BUILDING NO. 2, a Minnesota General Partnership, owner and proprietor, and BANKER'S LIFE INSURANCE COMPANY OF DES MOINES, IOWA, an Iowa Corporation, mortgagee of the following described property situated in the County of Hennepin, State of Minnesota to wit:

Lot Seven (7), except the North 355.87 feet thereof, Block Four (4), L.M.J. 2nd Addition, according to the plat thereof on file or of record in the office of the Registrar of Titles for Hennepin County, Minnesota.

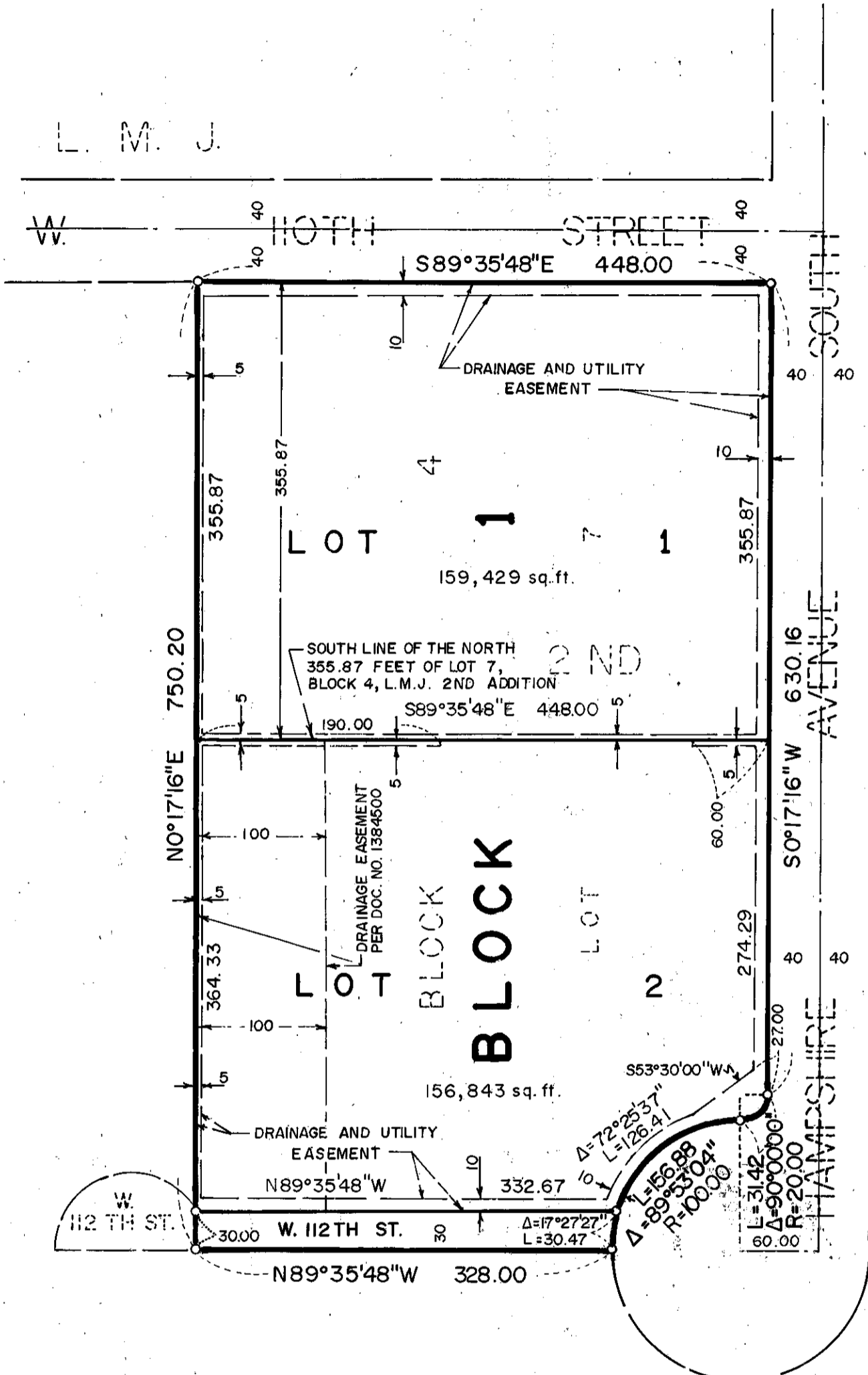
Have caused the same to be surveyed and platted as L.M.J. 4TH ADDITION and do hereby donate and dedicate to the public, for public use forever the street and utility and drainage easements as shown on said plat.

In witness whereof said BRIDGEWAY SOUTH, a Minnesota Limited Partnership, has caused these presents to be signed by its proper officers and its corporate seal to be hereunto affixed this 31<sup>st</sup> day of OCTOBER, 1980.

In witness whereof said MIDWEST FEDERAL SAVINGS AND LOAN ASSOCIATION OF MINNEAPOLIS, a corporation organized under the laws of the United States of America, has caused these presents to be signed by its proper officers and its corporate seal to be affixed this 9<sup>th</sup> day of OCTOBER, 1980.

In witness whereof said HAMPSHIRE BUILDING NO. 2, a Minnesota General Partnership, has caused these presents to be signed by its proper officers and its corporate seal to be hereunto affixed this 29<sup>th</sup> day of OCTOBER, 1980.

In witness whereof said BANKER'S LIFE INSURANCE COMPANY OF DES MOINES, IOWA, an Iowa Corporation, has caused these presents to be signed by its proper officers this \_\_\_\_\_ day of \_\_\_\_\_, 1980.



JIM WIENSCH  
1ST ADDITION

ADDITION

SIGNED: Paul R. Anderson its Vice President BRIDGEWAY SOUTH

SIGNED: Shirley R. Hanson its Assistant Vice Pres. MIDWEST FEDERAL SAVINGS AND LOAN ASSOCIATION OF MINNEAPOLIS  
Nancy Schreiber its Assistant Secretary HAMPSHIRE BUILDING NO. 2

SIGNED: Thomas J. Bell its President HAMPSHIRE BUILDING NO. 2

SIGNED: Thomas J. Bell its Assistant Regional Director - Commercial Mortgages BANKER'S LIFE INSURANCE COMPANY OF DES MOINES, IOWA

The foregoing instrument was acknowledged before me this 31<sup>st</sup> day of OCTOBER, 1980 by PAUL R. ANDERSON its Vice President and \_\_\_\_\_ its \_\_\_\_\_ of said BRIDGEWAY SOUTH, a Minnesota Limited Partnership.

The foregoing instrument was acknowledged before me this 9<sup>th</sup> day of October, 1980 by Shirley R. Hanson its Assistant Vice Pres. and Nancy Schreiber its Assistant Secretary of said MIDWEST FEDERAL SAVINGS AND LOAN ASSOCIATION OF MINNEAPOLIS, a corporation organized under the laws of the United States of America.

The foregoing instrument was acknowledged before me this 29<sup>th</sup> day of OCTOBER, 1980 by DENNIS R. KUHR its PARTNER and \_\_\_\_\_ its \_\_\_\_\_ of said HAMPSHIRE BUILDING NO. 2, a Minnesota General Partnership.

The foregoing instrument was acknowledged before me this 31<sup>st</sup> day of OCTOBER, 1980 by WE KNOWLES its \_\_\_\_\_ and Thomas J. Bell its Asst. Reg. Director - Com. Mgr. of said BANKER'S LIFE INSURANCE COMPANY OF DES MOINES, IOWA, an Iowa Corporation.

I hereby certify that I have surveyed and platted the property described on this plat as L.M.J. 4TH ADDITION; that this plat is a correct representation of said survey; that all distances are correctly shown on said plat in feet and hundredths of a foot; that all monuments have been correctly placed in the ground as shown on said plat; that the outside boundary lines are correctly designated on said plat; and that there are no wetlands to be designated on said plat.

Edward H. Sunde, Land Surveyor  
Minnesota Registration No. 8612

STATE OF MINNESOTA  
COUNTY OF HENNEPIN  
The foregoing instrument as acknowledged before me this 1<sup>st</sup> day of OCTOBER, 1980 by Edward H. Sunde, Land Surveyor.

BLOOMINGTON, MINNESOTA  
The plat of L.M.J. 4TH ADDITION was approved and accepted by the City Council of the City of Bloomington, Minnesota, at a regular meeting thereof, held this \_\_\_\_\_ day of \_\_\_\_\_, 1980.

CITY COUNCIL OF BLOOMINGTON, MINNESOTA  
BY: \_\_\_\_\_ its Mayor  
PROPERTY TAXATION DEPT., Hennepin County, Minnesota

I hereby certify that there are no delinquent taxes for all years prior to 1980 for land described on this plat. Dated this \_\_\_\_\_ day of \_\_\_\_\_, 1980.

Vernon T. Hoppe, Director  
SURVEY DIVISION, Hennepin County, Minnesota  
Pursuant to Chapter 810, Minnesota Laws of 1969, this plat has been approved this \_\_\_\_\_ day of \_\_\_\_\_, 1980.

Robert L. Bakka, Hennepin County Surveyor  
REGISTRAR OF TITLES, Hennepin County, Minnesota  
I hereby certify that the within plat of L.M.J. 4TH ADDITION was filed for record in this office this \_\_\_\_\_ day of \_\_\_\_\_, 1980 at \_\_\_\_\_ o'clock \_\_\_\_\_ M.

R. Dan Carlson, Registrar of Titles  
BY: \_\_\_\_\_ Deputy

