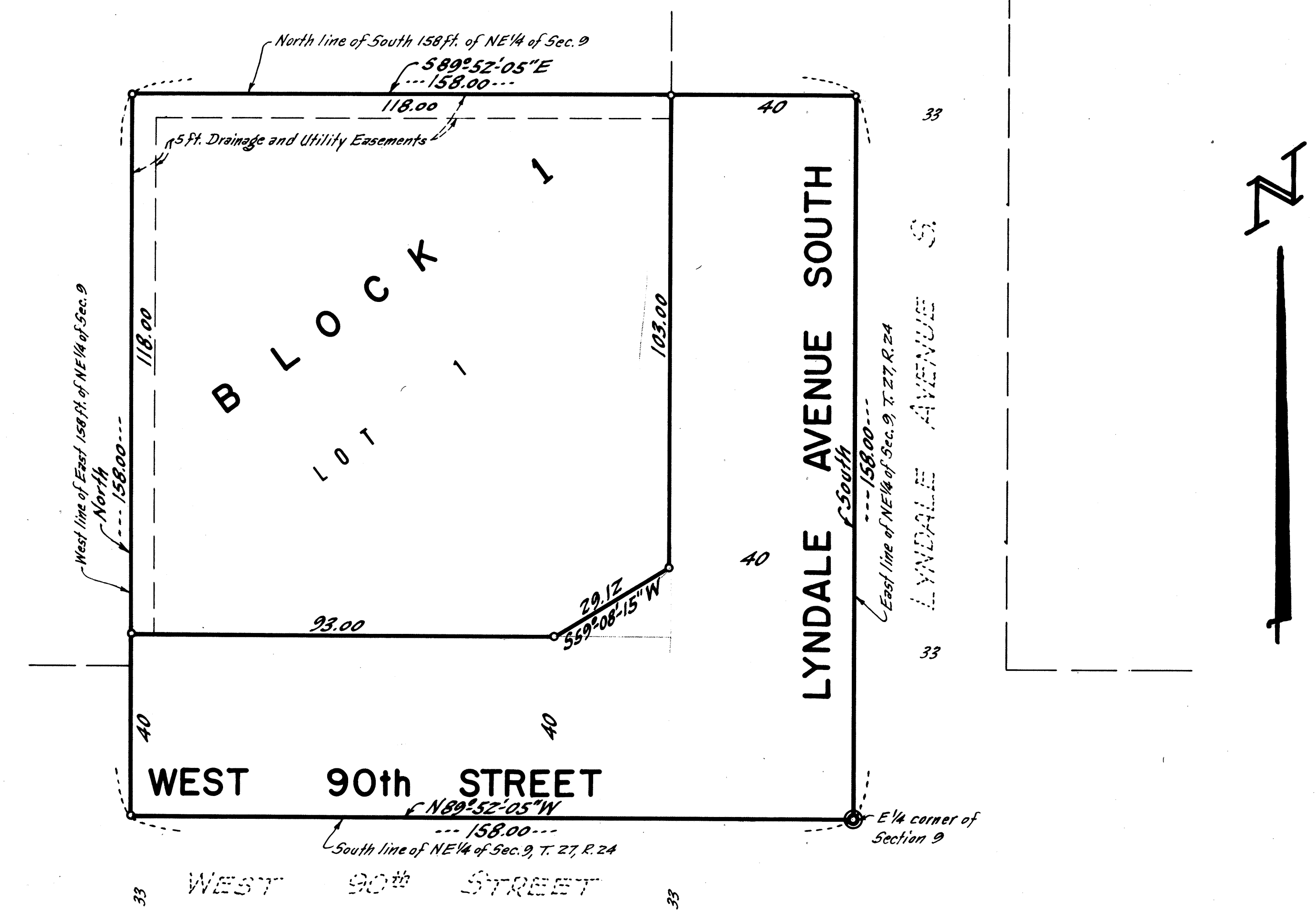


JERSEE - SECURITY TRUST

o Denotes iron monument
 @ Denotes Hennepin County Cast Iron Monument
 Bearings shown are assumed
 Scale: 1 inch equals 20 feet

PARKER ENGINEERING, INC.
 SURVEYORS

MARCH, 1972



Know all men by these presents that Jersee Security Co., a Minnesota Corporation, owner and proprietor of the following described property situate in the State of Minnesota and County of Hennepin to wit: The South 158 feet of the East 158 feet of the Northeast Quarter of Section 9, Township 27, Range 24. Has caused the same to be surveyed and platted as JERSEE - SECURITY TRUST and does hereby donate and dedicate to the public for public use forever the Street, Avenue and Easements for drainage and utility purposes as shown on the plat. In witness whereof said Jersee Security Co. has caused these presents to be signed by its proper officers and its corporate seal to be hereunto affixed, this 24 day of March A.D. 1972.

In presence of:-
 Alan C. Keukel
 Corneilus A. Vandenberg

JERSEE SECURITY CO.
 by Herbert H. Rosenwald President
 Herbert H. Rosenwald
 by Helen L. Rosenwald Vice President
 Helen L. Rosenwald

STATE OF MINNESOTA)
 COUNTY OF HENNEPIN) S.S. On this 24 day of March A.D. 1972, before me a Notary Public, personally appeared Herbert H. Rosenwald and Helen L. Rosenwald, to me personally known who by me each duly sworn did say that they are respectively President and Vice President of Jersee Security Co., the corporation named in the foregoing instrument, that the corporate seal affixed to said instrument is the corporate seal of said corporation and that said instrument was signed and sealed in behalf of said corporation by authority of its Board of Directors and said Herbert H. Rosenwald and Helen L. Rosenwald acknowledged said instrument to be the free act and deed of said corporation.

Gregory J. Wanick
 Notary Public, Hennepin County, Minnesota
 My commission expires August 9, 1977

I hereby certify that I have surveyed and platted the property described on this plat as JERSEE - SECURITY TRUST; that this plat is a correct representation of said survey; that all distances are correctly shown on the plat in feet and decimals of a foot; that all monuments have been correctly placed in the ground as shown; that the outside boundary lines are correctly designated on the plat and that there are no wet lands to be designated on said plat.

Clark H. Parker
 Surveyor-Minnesota Registration No. 2055

STATE OF MINNESOTA)
 COUNTY OF HENNEPIN) S.S. The surveyor's certificate was subscribed and sworn to before me, a Notary Public, this 24 day of March A.D. 1972.

Helen L. Rosenwald
 Notary Public, Hennepin County, Minnesota
 My commission expires July 4, 1973

This plat of JERSEE - SECURITY TRUST was approved and accepted by the City Council of Bloomington, Minnesota at a regular meeting thereof held this ___ day of ___ A.D. 1972.

CITY COUNCIL OF BLOOMINGTON, MINNESOTA
 by _____ Mayor
 by _____ Clerk

Pursuant to Chapter 810, Minnesota Laws of 1969, this plat has been approved this ___ day of ___; 1972.

by Elmer J. Peterson, Hennepin County Surveyor

STANDARD
 OIL 1st
 ADDITION