

HYLAND CREEK TOWNHOMES

R.T. DOC. NO.
C.R. DOC. NO.

KNOW ALL MEN BY THESE PRESENTS: That DAHL PROPERTIES, a general partnership, owner and proprietor and Russell G. Kladis and Irene F. Kladis, husband and wife, contract purchasers and MARVIN H. ANDERSON CONSTRUCTION CO., a Minnesota Corporation, contract purchaser of the following described property situated in the County of Hennepin, State of Minnesota, to wit:

All that part of the following described property: Lots 2, 3 and 4, Block 4, and Lots 1, 2 and 3, Block 12; embraced within Sec. 20, Twsp. 116, R. 21, Hyland Creek 1st Addition.

and

Lots 1, 2, 3 and 4, Block 4, Except that part of said Lots 2, 3, and 4, embraced within Sec. 20, Twsp. 116N, R. 21, West of the 5th Principal Meridian, Lots 1, 2, 3 and 4, Block 7, Lots 1, 2, 3 and 4, Block 12, Except that part of said Lots 1, 2, 3, embraced within Sec. 20, Twsp. 116, R. 21, Lots 1, 2, 3, 4, 5 and 6, Block 13, Lots 1, 2, 3 and 4, Block 14, Lots 1, 2, 3 and 4, Block 15, all in Hyland Creek 1st Addition.

And that HYLAND CREEK ASSOCIATION, a Minnesota non-profit corporation, owner and proprietor and Russell G. Kladis and Irene F. Kladis, husband and wife, contract purchasers and MARVIN H. ANDERSON CONSTRUCTION CO., a Minnesota Corporation, contract purchaser of the following described property situated in the County of Hennepin, State of Minnesota, to wit:

That part of Lot 1, Block 16, embraced within Section 20, Township 116, Range 21, Hyland Creek 1st Addition, according to the plat thereof on file or of record in the office of the Registrar of Titles in and for said County.

And that HYLAND CREEK ASSOCIATION, a Minnesota non-profit corporation, owner and proprietor of the following described property situated in the County of Hennepin, State of Minnesota, to wit:

Lot 1, Block 16, Except that part of said lot embraced within Sec. 20, Twsp. 116, R. 21, all in Hyland Creek 1st Addition.

and

Outlots A and B, HILLS OF CAMELOT, according to the recorded plat thereof.

Have caused the same to be surveyed and platted as HYLAND CREEK TOWNHOMES and do hereby donate and dedicate to the public for public use forever, the road and drainage and utility easements as shown on said plat.

In witness whereof said DAHL PROPERTIES, a general partnership has caused these presents to be signed by Russell G. Kladis, a general partner and Charles M. Slocum, a general partner this 1st day of MARCH 19 79.

In witness whereof said Russell G. Kladis and Irene F. Kladis, husband and wife have set their hands and seals this 1st day of MARCH 19 79.

In witness whereof said MARVIN H. ANDERSON CONSTRUCTION CO., a Minnesota Corporation, has caused these presents to be signed by its proper officers and its corporate seal to be hereunto affixed this 1st day of MARCH 19 79.

In witness whereof said HYLAND CREEK ASSOCIATION, a Minnesota non-profit corporation, has caused these presents to be signed by its proper officers and its corporate seal to be hereunto affixed this 8th day of MARCH 19 79.

DAHL PROPERTIES

SIGNED: Russell G. Kladis, General Partner; Charles M. Slocum, General Partner

SIGNED: Irene F. Kladis

MARVIN H. ANDERSON CONSTRUCTION CO.

SIGNED: Marlin D. Grant, its PRESIDENT; Norman C. Soderman, its VICE-PRESIDENT

HYLAND CREEK ASSOCIATION

SIGNED: E.C. Bunday, its PRESIDENT; Robert E. DuBois, its VICE-PRESIDENT

STATE OF MINNESOTA COUNTY OF HENNEPIN

The foregoing instrument was acknowledged before me this 1st day of MARCH 19 79 by Russell G. Kladis, a general partner and Charles M. Slocum, a general partner of DAHL PROPERTIES, the general partnership named in the foregoing instrument on behalf of said partnership.

Notary Public, Hennepin County, Minnesota; My Commission Expires MAY 27, 1982

STATE OF MINNESOTA COUNTY OF HENNEPIN

The foregoing instrument was acknowledged before me this 1st day of MARCH 19 79 by Russell G. Kladis and Irene F. Kladis, husband and wife.

Notary Public, Hennepin County, Minnesota; My Commission Expires MAY 27, 1982

STATE OF MINNESOTA COUNTY OF HENNEPIN

The foregoing instrument was acknowledged before me this 1st day of MARCH 19 79 by Marlin D. Grant, its PRESIDENT and Norman C. Soderman, its VICE-PRESIDENT of said MARVIN H. ANDERSON CONSTRUCTION CO., a Minnesota Corporation, on behalf of said corporation.

Notary Public, Hennepin County, Minnesota; My Commission Expires MAY 27, 1982

STATE OF MINNESOTA COUNTY OF HENNEPIN

The foregoing instrument was acknowledged before me this 8th day of MARCH 19 79 by E.C. Bunday, its PRESIDENT and Robert E. DuBois, its VICE-PRESIDENT of said HYLAND CREEK ASSOCIATION, a Minnesota non-profit corporation, on behalf of said non-profit corporation.

Notary Public, Hennepin County, Minnesota; My Commission Expires MAY 27, 1982

I hereby certify that I have surveyed and platted the property described on this plat as HYLAND CREEK TOWNHOMES; that this plat is a correct representation of said survey; that all distances are correctly shown on said plat in feet and hundredths of a foot; that all monuments have been correctly placed in the ground as shown on said plat; and that the outside boundary lines are correctly designated on said plat.

Edward H. Sunde, Land Surveyor; Minnesota Registration No. 8612

STATE OF MINNESOTA COUNTY OF HENNEPIN

The foregoing instrument was acknowledged before me this 27th day of February 19 79 by Edward H. Sunde, Land Surveyor.

JOHN K. BARNES, Notary Public - Minnesota, Hennepin County, My Commission Expires Sept. 19, 1985

Notary Public, Hennepin County, Minnesota; My Commission Expires September 19, 1985

BLOOMINGTON, MINNESOTA

The plat of HYLAND CREEK TOWNHOMES was approved and accepted by the City Council of the City of Bloomington, Minnesota at a regular meeting thereof, held this day of 19

CITY COUNCIL OF BLOOMINGTON, MINNESOTA

BY: its Mayor; BY: its Manager

FINANCE DIVISION, Hennepin County, Minnesota

I hereby certify that there are no delinquent taxes for all years prior to 19 for land described on this plat. Dated this day of 19

Vernon T. Hoppe, Director; BY: Tax Clerk

SURVEY DIVISION, Hennepin County, Minnesota

Pursuant to Chapter 810, Minnesota Laws of 1969, this plat has been approved this day of 19

Alver R. Freeman, Hennepin County Surveyor

REGISTRAR OF TITLES, Hennepin County, Minnesota

I hereby certify that the within plat of HYLAND CREEK TOWNHOMES was filed in this office this day of 19, at o'clock M.

WAYNE A. JOHNSON, Registrar of Titles; BY: Deputy

COUNTY RECORDER, Hennepin County, Minnesota

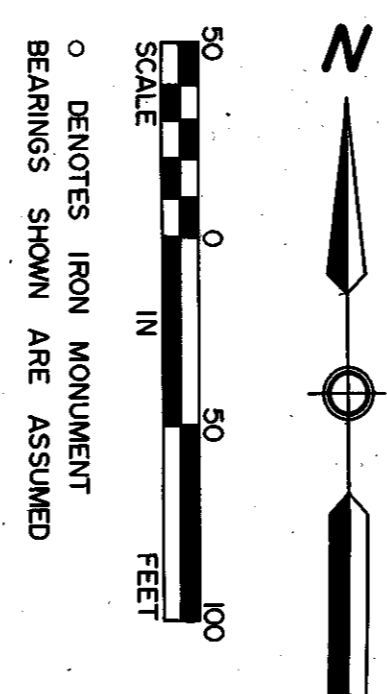
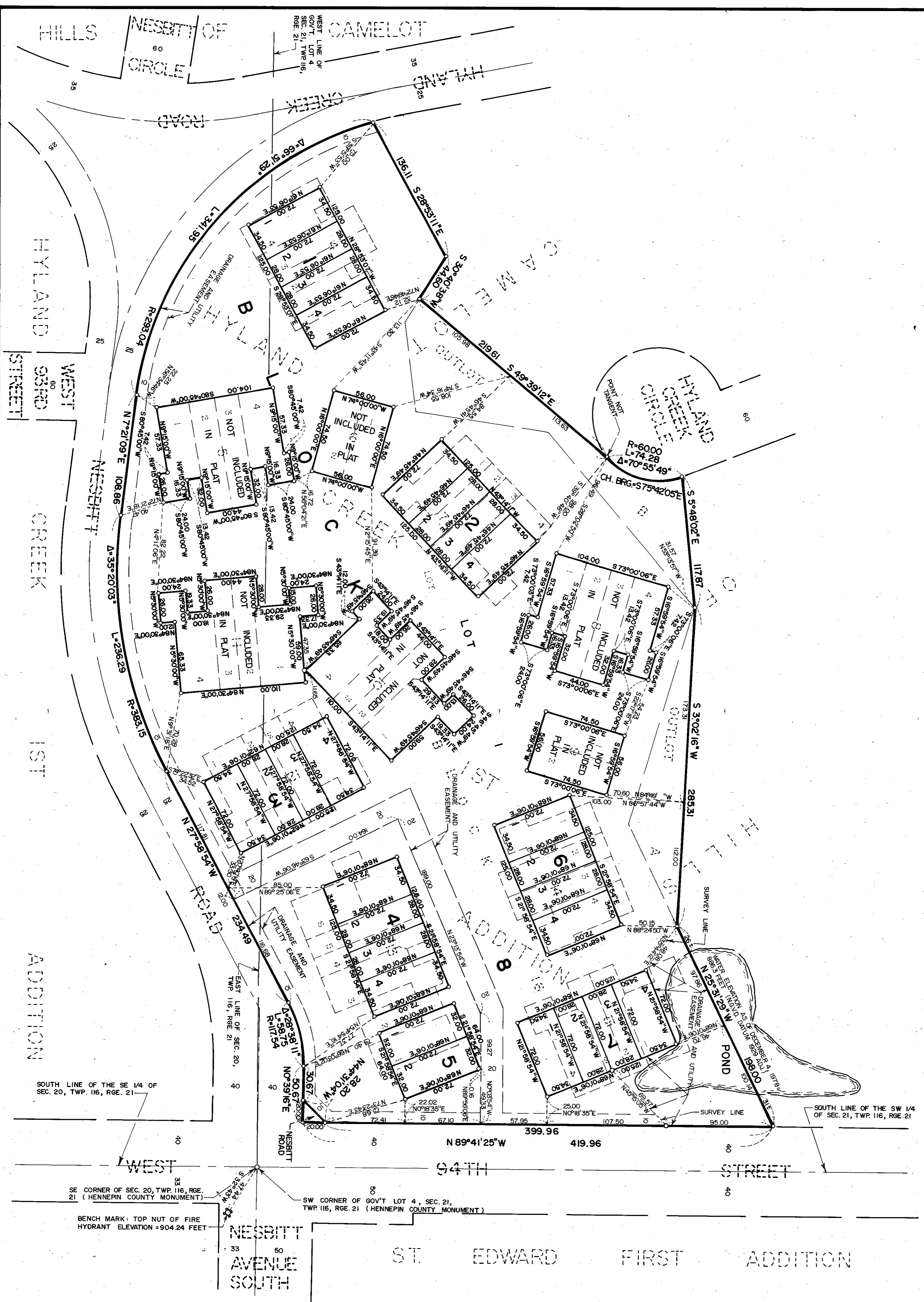
I hereby certify that the within plat of HYLAND CREEK TOWNHOMES was filed for record in this office this day of 19, at o'clock M.

WAYNE A. JOHNSON, County Recorder; BY: Deputy

HYLAND CREEK TOWNHOMES

H-73

R.T. DOC. NO. \_\_\_\_\_  
C.R. DOC. NO. \_\_\_\_\_



○ DENOTES IRON MONUMENT  
BEARINGS SHOWN ARE ASSUMED

AREAS OF LOTS

Block	Lot	Area (sq. ft.)
BLOCK 1	Lot 1 =	2,484.00 sq. ft.
	Lot 2 =	2,016.00 sq. ft.
	Lot 3 =	2,016.00 sq. ft.
	Lot 4 =	2,484.00 sq. ft.
BLOCK 2	Lot 1 =	2,484.00 sq. ft.
	Lot 2 =	2,016.00 sq. ft.
	Lot 3 =	2,016.00 sq. ft.
	Lot 4 =	2,484.00 sq. ft.
BLOCK 3	Lot 1 =	2,484.00 sq. ft.
	Lot 2 =	2,016.00 sq. ft.
	Lot 3 =	2,016.00 sq. ft.
	Lot 4 =	2,484.00 sq. ft.
BLOCK 4	Lot 1 =	2,484.00 sq. ft.
	Lot 2 =	2,016.00 sq. ft.
	Lot 3 =	2,016.00 sq. ft.
	Lot 4 =	2,484.00 sq. ft.
BLOCK 5	Lot 1 =	2,304.00 sq. ft.
	Lot 2 =	2,304.00 sq. ft.
	Lot 3 =	2,304.00 sq. ft.
	Lot 4 =	2,304.00 sq. ft.
BLOCK 6	Lot 1 =	2,484.00 sq. ft.
	Lot 2 =	2,016.00 sq. ft.
	Lot 3 =	2,016.00 sq. ft.
	Lot 4 =	2,484.00 sq. ft.
BLOCK 7	Lot 1 =	2,484.00 sq. ft.
	Lot 2 =	2,016.00 sq. ft.
	Lot 3 =	2,016.00 sq. ft.
	Lot 4 =	2,484.00 sq. ft.
BLOCK 8	Lot 1 =	234,362. sq. ft.
	Lot 2 =	234,362. sq. ft.
	Lot 3 =	234,362. sq. ft.
	Lot 4 =	234,362. sq. ft.