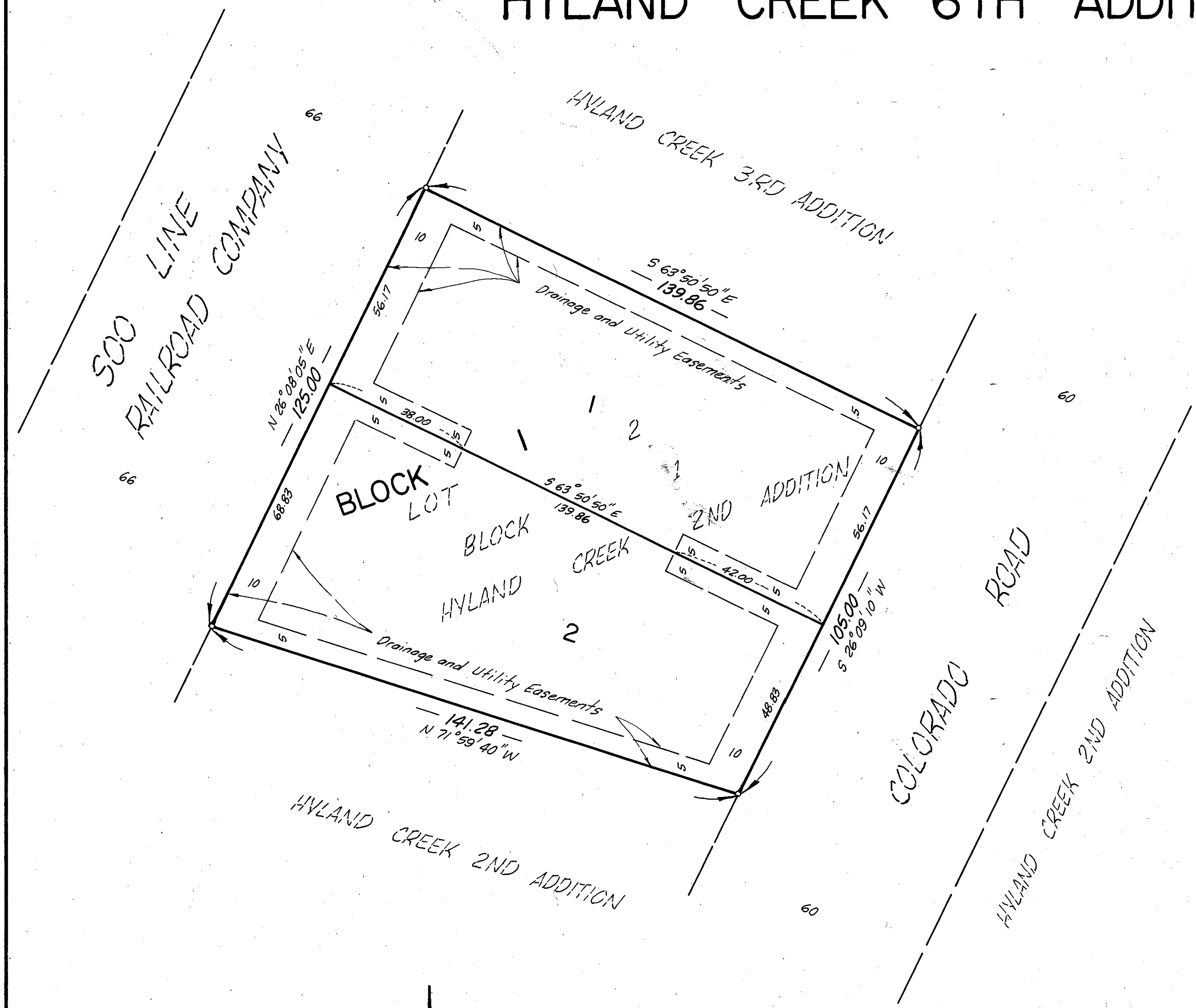


HYLAND CREEK 6TH ADDITION

R.T. DOC. NO. _____



KNOW ALL MEN BY THESE PRESENTS: *now known as Midwest Savings Association, F.A.*
 That Adele M. Biernat, single, owner and proprietor and Midwest Federal Savings and Loan Association of Minneapolis, V a United States Corporation, mortgagee and The Bank Excelsior National Association, a United States Corporation, mortgagee of the following described property situated in the County of Hennepin and State of Minnesota to wit:

Lot 2, Block 1, Hyland Creek 2nd Addition, according to the plat thereof on file or of record in the office of the Registrar of Titles in and for said County.

Have caused the same to be surveyed and platted as HYLAND CREEK 6TH ADDITION and do hereby donate and dedicate to the public for public use forever the and Easements for drainage and utility purposes as shown on the plat. In witness whereof said Adele M. Biernat, single, has hereunto set her hand and seal this 12th day of June, 1989. In witness whereof said Midwest Federal Savings and Loan Association of Minneapolis, A has caused these presents to be signed by its proper officers this _____ day of _____, 1989. In witness whereof said The Bank Excelsior National Association has caused these presents to be signed by its proper officers this _____ day of _____, 1989. *now known as Midwest Savings Association, F.A.*

SIGNED: Adele M. Biernat
 Adele M. Biernat
 MIDWEST FEDERAL SAVINGS AND LOAN ASSOCIATION OF MINNEAPOLIS *now known as Midwest Savings Association, F.A.*
 by Kenneth B. Booth
 its Assistant Vice President
 by Ruth M. Shields
 its Assistant Secretary
 THE BANK EXCELSIOR NATIONAL ASSOCIATION
 by Robert M. Wein
 its President
 by Jerry L. Julius
 its Vice-President

STATE OF MINNESOTA
 COUNTY OF HENNEPIN The foregoing instrument was acknowledged before me this 12th day of June, 1989, by Adele M. Biernat, single.

Joyce W. M. Couture
 Notary Public, Hennepin County, Minnesota
 My commission expires Feb 2, 1990

STATE OF MINNESOTA
 COUNTY OF HENNEPIN The foregoing instrument was acknowledged before me this 16th day of JUNE, 1989, by Kenneth B. Booth Assistant Vice President and by Ruth M. Shields Assistant Secretary of Midwest Federal Savings and Loan Association of Minneapolis, a United States Corporation, on behalf of said corporation. *now known as Midwest Savings Association, F.A.*

KATHLEEN Z. WENKER
 NOTARY PUBLIC - MINNESOTA
 ANOKA COUNTY
 My Commission Expires Jan 16, 1990

JOYCE W. M. COUTURE
 NOTARY PUBLIC - MINNESOTA
 HENNEPIN COUNTY
 My commission expires Feb. 2, 1990

Jerry L. Julius
 Notary Public, Hennepin County, Minnesota
 My commission expires Jan 16, 1990

STATE OF MINNESOTA
 COUNTY OF HENNEPIN The foregoing instrument was acknowledged before me this 19th day of JUNE, 1989, by Robert M. Weiss President and by Jerry L. Julius Vice-President of The Bank Excelsior National Association, a United States Corporation, on behalf of said corporation.

NANCY M. ROYGRAFF
 NOTARY PUBLIC - MINNESOTA
 HENNEPIN COUNTY
 My Commission Expires Oct. 28, 1993

Nancy M. Roycraft
 Notary Public, Hennepin County, Minnesota
 My commission expires Oct. 28, 1993

I hereby certify that I have surveyed and platted the property described on this plat as HYLAND CREEK 6TH ADDITION; that this plat is a true and correct representation of said survey; that all distances are correctly shown on the plat in feet and hundredths of a foot; that all monuments have been correctly placed in the ground as shown; that the outside boundary lines are correctly designated on this plat; and that there are no wet lands or public highways to be designated on said plat.

Larry R. Couture
 Larry R. Couture, Land Surveyor
 Minnesota License No. 9018

STATE OF MINNESOTA
 COUNTY OF HENNEPIN The foregoing instrument was acknowledged before me this 12th day of June, 1989, by Larry R. Couture, Land Surveyor.

JOYCE W. M. COUTURE
 NOTARY PUBLIC - MINNESOTA
 HENNEPIN COUNTY
 My commission expires Feb. 2, 1990

Joyce W. M. Couture
 Notary Public, Hennepin County, Minnesota
 My Commission expires Feb 2, 1990

CITY OF BLOOMINGTON, Minnesota
 This plat of HYLAND CREEK 6TH ADDITION was approved and accepted by the City Council of the City of Bloomington, Minnesota, at a regular meeting thereof held this _____ day of _____, 1989. If applicable the written comments and recommendations of the Commissioner of Transportation and the County Highway Engineer have been received by the City or the prescribed 30 day period has elapsed without receipt of such comments or recommendations, as provided by Minnesota Statutes, Section 505.03, Subdivision 2.

CITY COUNCIL OF THE CITY OF BLOOMINGTON, MINNESOTA

by _____ Mayor by _____ Clerk

PROPERTY TAX AND PUBLIC RECORDS DEPARTMENT, Hennepin County, Minnesota
 I hereby certify that taxes payable in _____ and prior years have been paid for lands described on this plat. Dated this _____ day of _____, 1989.

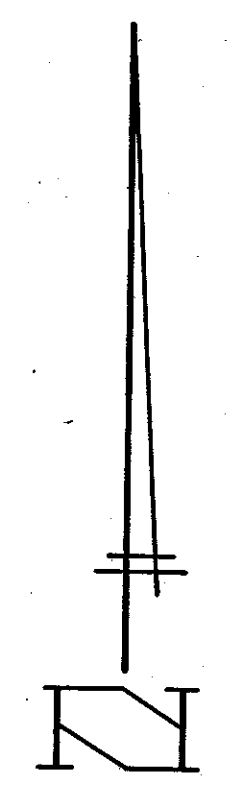
Dale G. Folstad, Hennepin County Auditor by _____ Deputy

SURVEY DIVISION, Hennepin County, Minnesota
 Pursuant to Chapter 810, Minnesota Laws of 1969, this plat has been approved this _____ day of _____, 1989.

Bernard H. Larson, Hennepin County Surveyor by _____

REGISTRAR OF TITLES, Hennepin County, Minnesota
 I hereby certify that the within plat of HYLAND CREEK 6TH ADDITION was filed in this office this _____ day of _____, 1989, at _____ o'clock _____ M.

R. Dan Carlson, Registrar of Titles by _____ Deputy



○ DENOTES IRON MONUMENT MARKED BY REGISTRATION NO. 9018.
 BEARINGS SHOWN ARE BASED ON AN ASSUMED BASIS.

